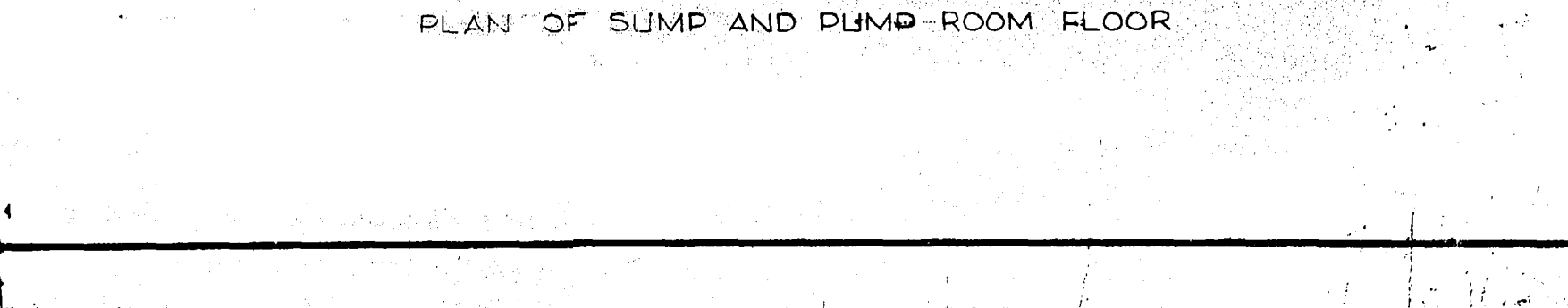
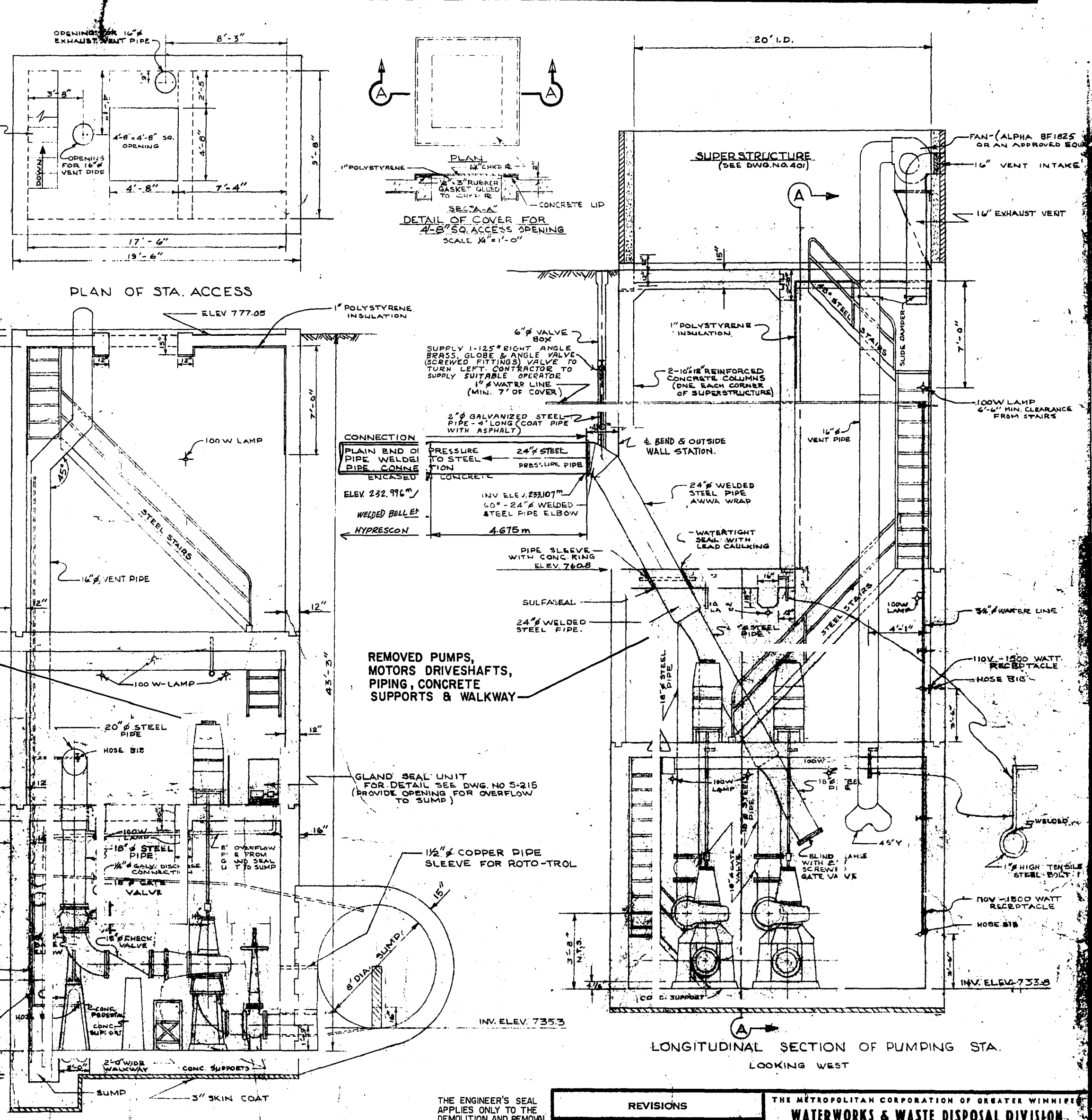
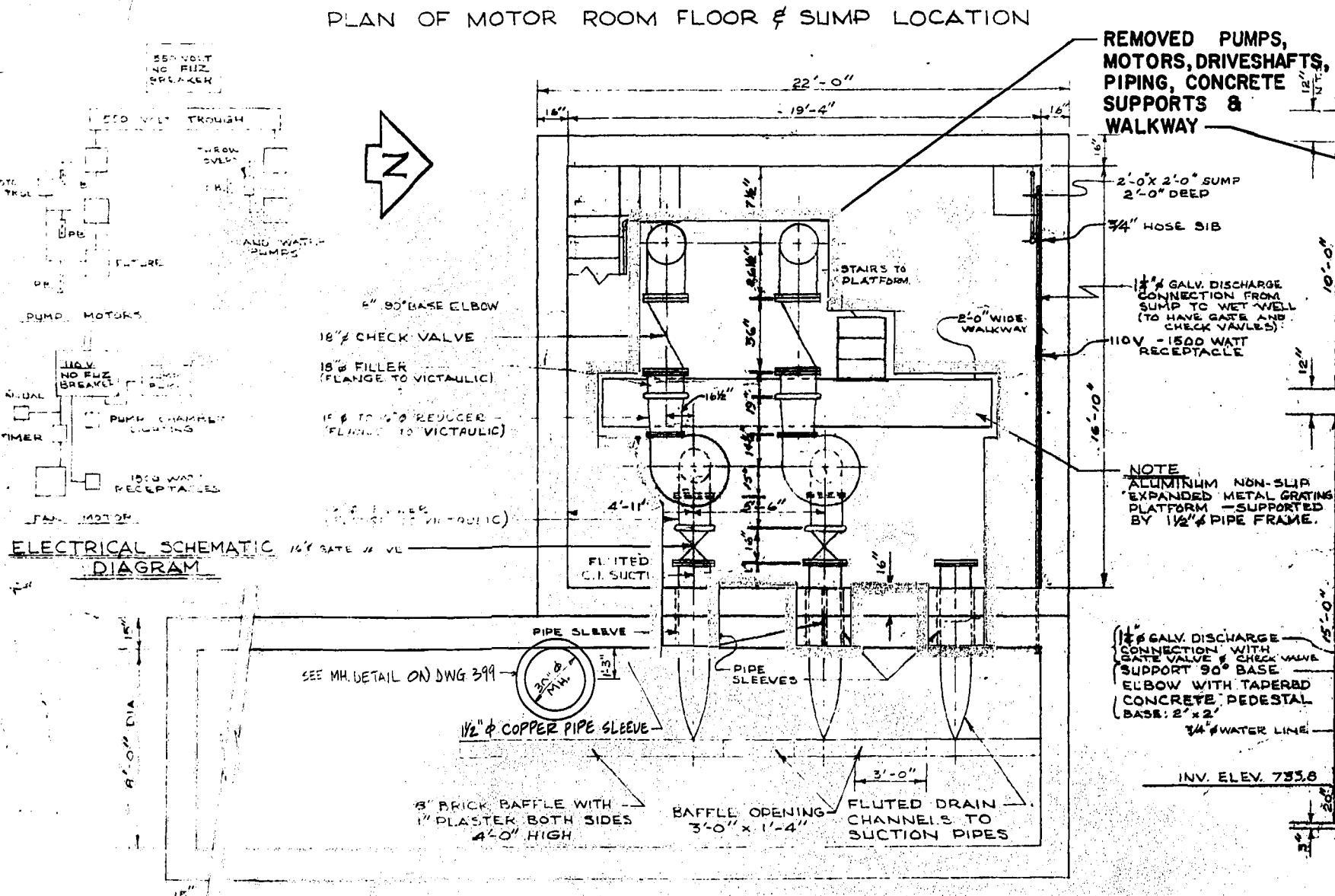
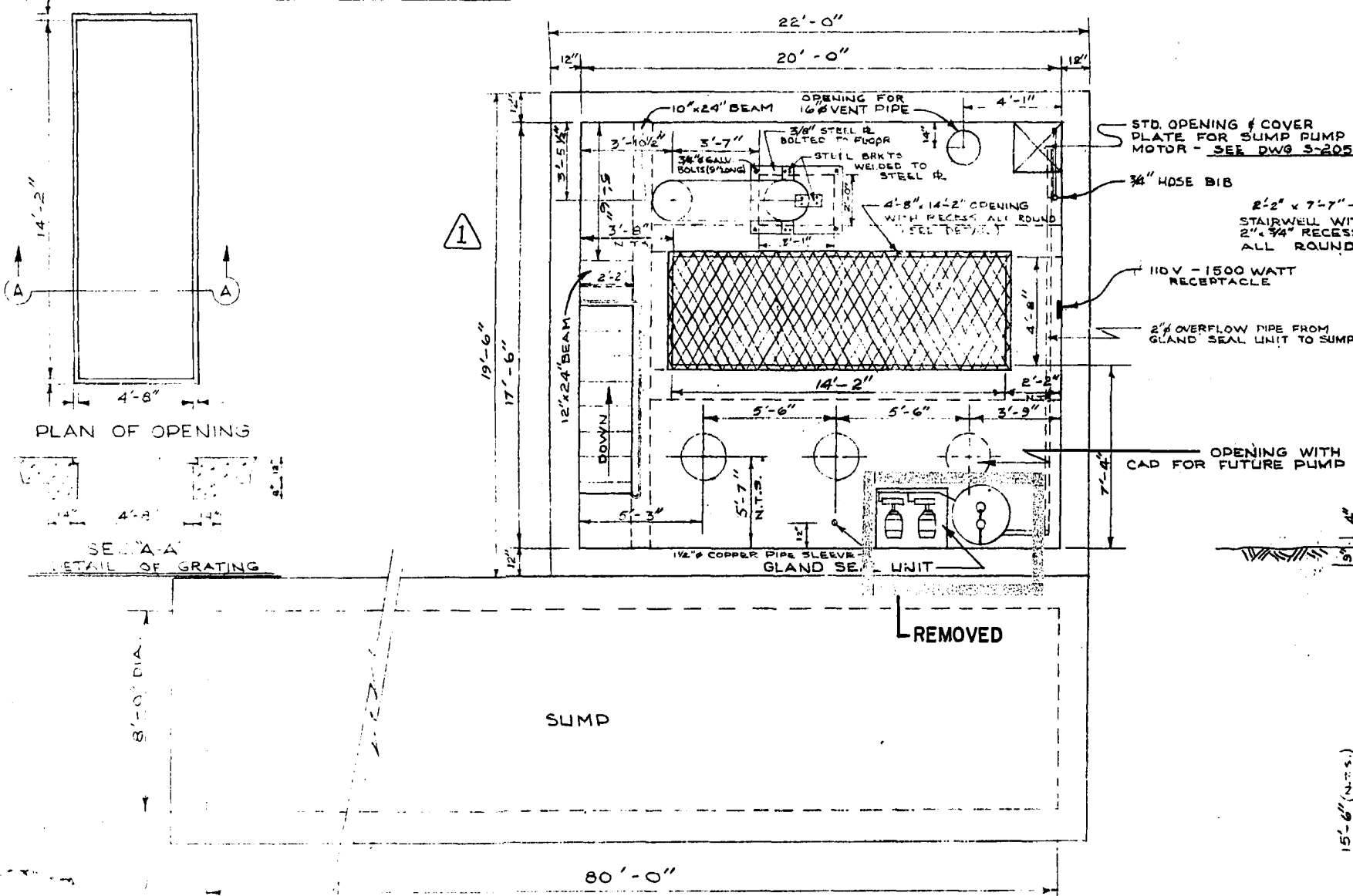


file # SP 10157

REF. OF DRAWING NO. 400 B DETAILS



SEC'A-A' THRU PUMPING STA. & SUMP - LOOKING NORTH -

FOR INSTALLATION OF NEW EQUIPMENT SEE DWG. 1106

THE ENGINEER'S SEAL APPLIES ONLY TO THE DEMOLITION AND REMOVAL WORK REQUIRED ON THIS DRAWING.

PROVINCE OF MANITOBA REGISTERED PROFESSIONAL ENGINEER

REVISIONS			
NO.	DESCRIPTION	DATE	BY
1	BEAM DETAILS ADDED	AUG 24/88	KHS
2	REMOVAL INSTRUCTIONS ADDED	APR 11/88	KHS
3			
4			
5			
6			
7			
8			

THE METROPOLITAN CORPORATION OF GREATER WINNIPEG
WATERWORKS & WASTE DISPOSAL DIVISION
 SEWAGE DISPOSAL BRANCH

CHARLESWOOD INTERCEPTOR PUMPING STATION AT COMMUNITY ROW & ROBLIN BLVD.

APPROVED BY: [Signature] DESIGNED BY: [Signature] CHECKED BY: [Signature]
 DRAWN BY: [Signature] DATE: FEB 26/88
 SCALE: 1/4" = 1'-0"

DRAWING NO. **400B**