

FINISH SPECIFICATION NOTES:

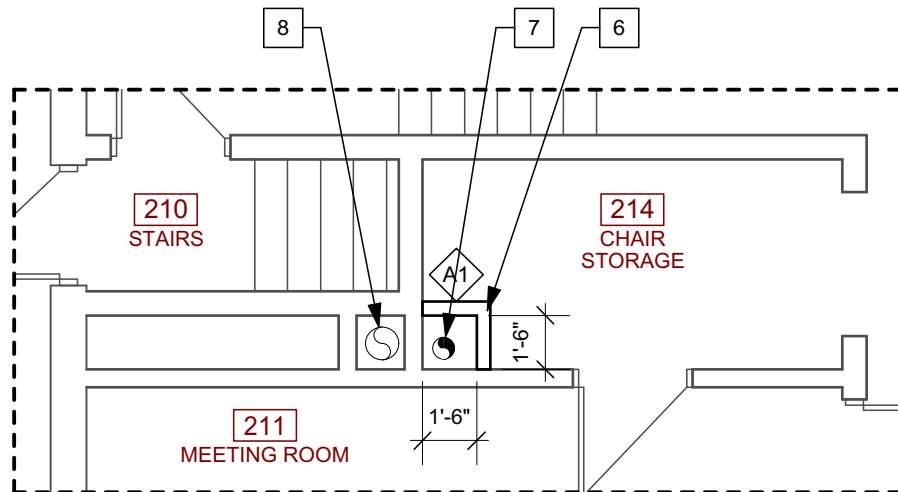
07 00 00 FINISHES

1. FIRESTOPPING:

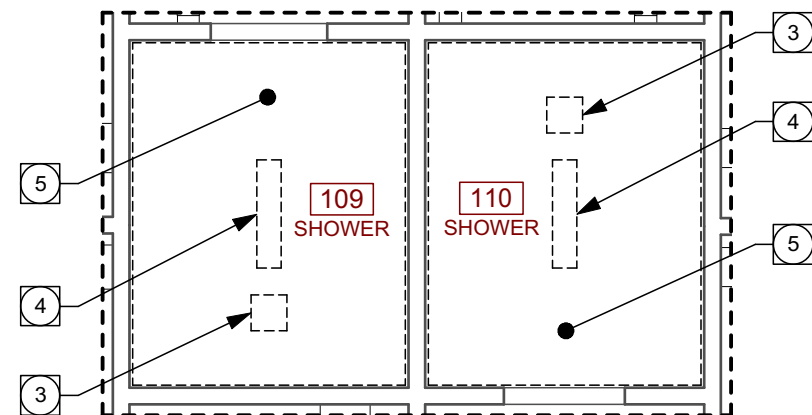
1. SYSTEM DESCRIPTION:
- 1 FIRESTOPPING MATERIALS: ULC TO ACHIEVE A FIRE RATING AS NOTED ON DRAWINGS
 - 2 FIRESTOP ALL INTERRUPTIONS TO FIRE RATED ASSEMBLIES, MATERIALS AND COMPONENTS AS REQUIRED TO SUIT WALL, FLOOR, CEILING OR ROOF.
 - 3 FIRE STOPPING AND SMOKE SEAL SYSTEMS IN ACCORDANCE WITH CAN4-S115.
 - 4 ALL FIRE STOPPING SYSTEMS USED TO BE BY SAME MANUFACTURERS.
2. SUBMITTALS:
- 1 PRODUCT DATA: SUBMIT MANUFACTURER'S PRINTED PRODUCT LITERATURE, SPECIFICATIONS AND DATASHEET AND INCLUDE PRODUCT CHARACTERISTICS, PERFORMANCE CRITERIA, PHYSICAL SIZE, FINISH AND LIMITATIONS.
 - 2 SUBMIT TWO COPIES OF WHMIS MSDS - MATERIAL SAFETY DATA.
3. SHOP DRAWINGS:
- 1 SUBMIT DOCUMENTATION TO SHOW LOCATION, PROPOSED MATERIAL, FIRE STOP SYSTEM NUMBER REINFORCEMENT, ANCHORAGE, FASTENINGS AND METHOD OF INSTALLATION.
 - 2 CONSTRUCTION DETAILS SHOULD ACCURATELY REFLECT ACTUAL JOB CONDITIONS.
 - 3 ACCEPTABLE MANUFACTURER'S:
 - 1 TREMCO INC.
 - 2 JOHNS MANVILLE
 - 3 HILTI
 - 4 A/D FIRE PROTECTION SYSTEMS INC.
 - 4 CONTRACTOR QUALIFICATIONS: COMPANY SPECIALIZING IN FIRE STOPPING INSTALLATIONS WITH 5 YEARS DOCUMENTED EXPERIENCE APPROVED BY MANUFACTURER AND LICENSED BY THE PROVINCE OR LOCAL AUTHORITY WHERE APPLICABLE.

09 00 00 FINISHES

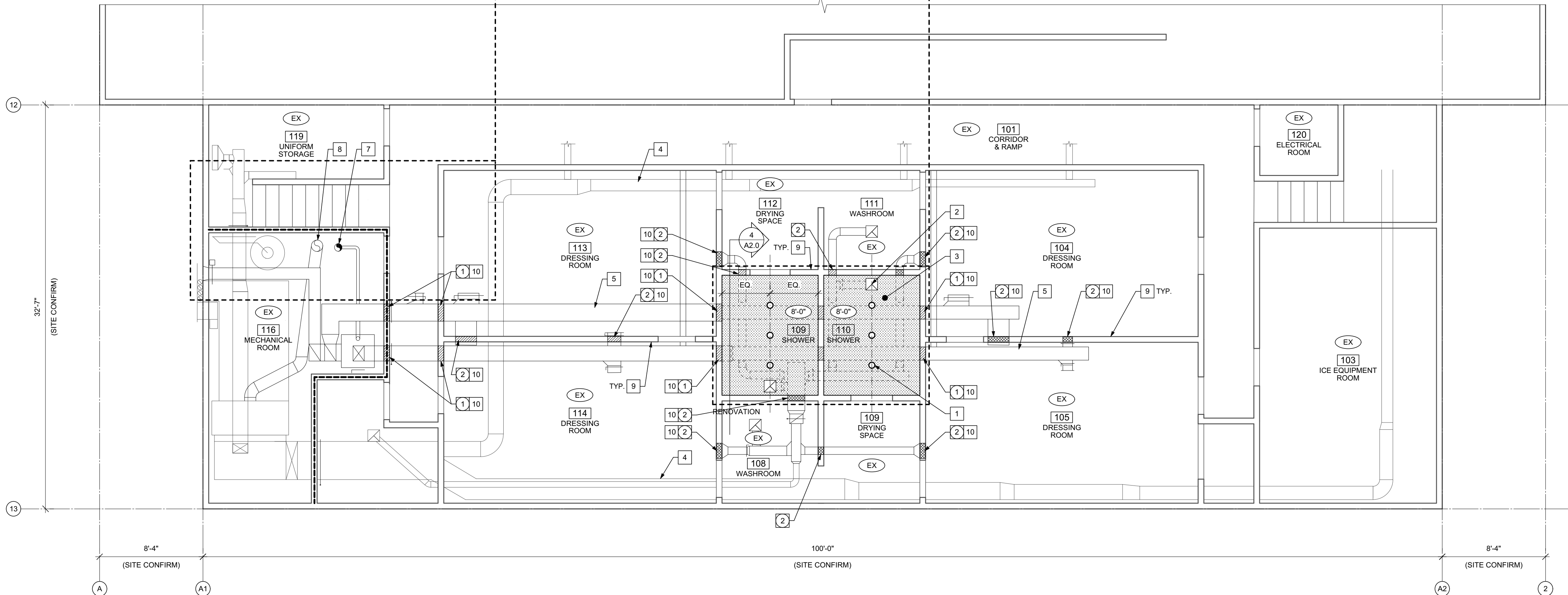
1. WALL AND BULKHEAD FRAMING: FURRED-OUT WALLS AND BULKHEADS TO BE CONSTRUCTED WITH NON-LOAD BEARING CHANNEL STUD FRAMING AND TRACKS TO ASTM C645, STUD DEPTH AS INDICATED ON THE DRAWINGS. ROLL FORMED FROM MIN. 24 GAUGE HOT DIPPED GALVANIZED STEEL SHEET, FOR SCREW ATTACHMENT OF GYPSUM BOARD. KNOCK-OUT SERVICE HOLES AT 16" CENTERS. METAL CHANNEL STIFFENERS 3/4" X 16 GAUGE COLD ROLLED STEEL COATED WITH RUST INHIBITIVE COATING.
2. SUSPENDED G.W.B. CEILING TO CONSIST OF SUSPENDED U-CHANNELS @ 4'-0" O.C. AND 7/8" DEEP HAT CHANNELS RUNNING PERPENDICULAR AT 16" O.C. HAT CHANNELS TO BE ATTACHED TO U-CHANNELS WITH METAL FURRING CHANNEL CLIPS OR WIRE-TIED. ASSEMBLY TO BE TO ASTM C754. STANDARD OF ACCEPTANCE:
CLARK DIETRICH BUILDING SYSTEMS U-CHANNEL, FURRING CHANNEL AND METAL FURRING CHANNEL CLIPS.
3. SHOWER CEILING FINISH: MOULD RESISTANT GYPSUM TO ASTM C473/D3273, 1/2" THICK X 4'-0" WIDTHS, ENDS SQUARE CUT, EDGES TAPERED. APPLICATION AND FINISHING OF GYPSUM BOARD TO BE IN ACCORDANCE WITH ASTM C840. APPLY A SKIM COAT OF ALL PURPOSE JOINT COMPOUND AT A TROWEL-APPLIED CONSISTENCY TO ENTIRE SURFACE AND LET DRY. THE SKIM COATED SURFACE MUST BE SMOOTH AND FREE OF TOOL MARKS AND RIDGES (A LIGHT SANDING OF THE SKIM COATING MAY BE NECESSARY TO REMOVE TOOL MARKS). REMOVE SANDING DUST FROM SURFACE, THEN APPLY ONE FULL COAT (6 MILS WFT) OF FIRST COAT PRIMER TO COVER SURFACE. ALLOW SURFACE TO DRY PRIOR TO DECORATING. JOINTS SHOULD BE TREATED WITH PAPER JOINT TAPE AND SETTING-TYPE JOINT COMPOUND. JOINT SURFACES MUST BE TREATED WITH A SEPARATE COAT OF SETTING-TYPE JOINT COMPOUND TO FULLY CONCEAL THE PAPER TAPE. WHEN THE JOINT IS COMPLETELY DRY, TREAT ENTIRE SURFACE WITH PLASTER BONDER ACCORDING TO APPLICATION DIRECTIONS. THEN APPLY BASECOAT PLASTER FROM 1/8 TO 2.4 MM (1/16" TO 3/32") USING A SCRATCH AND DOUBLE-BACK TECHNIQUE. THIS IS ACCOMPLISHED BY APPLYING A TIGHT, THIN COAT OVER THE ENTIRE AREA, AND IMMEDIATELY DOUBLING BACK WITH PLASTER FROM THE SAME BATCH TO ACHIEVE FULL THICKNESS. WHEN BASECOAT PLASTER IS FIRM, BROOM THE SURFACE TO LEAVE IT ROUGH AND OPEN FOR FINISH. WITH BASECOAT SET AND PARTIALLY DRY, APPLY FINISH PLASTER USING A SCRATCH AND DOUBLE-BACK TECHNIQUE. COMPLETE FINISHING WHEN MATERIAL IS FIRM. LEAVE FINISHED SURFACE SMOOTH AND DENSE FOR DECORATING.
- STANDARDS OF ACCEPTANCE:
MOULD RESISTANT GYPSUM: CGC FIBEROCK BRAND AQUA-TOUGH™ INTERIOR PANEL AR
FIRST COAT PRIMER: CGC SHEETROCK
JOINT TAPE: CGC/SYNKO PAPER JOINT TAPE
SETTING TYPE JOINT COMPOUND: CGC DURABRAND
PLASTER BONDER: CGC PLASTER BONDER
BASECOAT BLASTER: CGC DIAMOND VENEER
FINISH PLASTER: CGC IMPERIAL
4. WALL FINISH: STANDARD GYPSUM BOARD TO ASTM C1396/C1396M, REGULAR, 1/2" THICK X 4'-0" WIDTHS, ENDS SQUARE CUT, EDGES TAPERED. FIRE-RATED IF SPECIFIED. APPLICATION AND FINISHING OF GYPSUM BOARD TO BE IN ACCORDANCE WITH ASTM C840. FINISH FACE PANEL JOINTS, INTERNAL ANGLES, SCREW HEAD DEPRESSIONS WITH JOINT SYSTEM CONSISTING OF JOINT COMPOUND, JOINT TAPE AND TAPING COMPOUND INSTALLED ACCORDING TO MANUFACTURER'S DIRECTIONS AND FEATHERED ONTO PANEL FACES. FINISH CORNER BEADS AND TRIM AS REQUIRED WITH TWO COATS OF JOINT COMPOUND AND ONE COAT OF TAPING COMPOUND FEATHERED OUT ONTO PANEL FACES. COMPLETED INSTALLATION TO BE SMOOTH, LEVEL OR PLUMB, FREE FROM WAVES AND OTHER DEFECTS, READY FOR SURFACE FINISH.
5. PAINTING: ENSURE ALL SURFACES TO BE PAINTED ARE CLEANED AND DE-GREASED PRIOR TO ANY PAINTING WORK. ENSURE VENTILATION, LIGHT LEVELS, TEMPERATURE, HUMIDITY AND SUBSTRATE MOISTURE CONTENT LEVELS ARE WITHIN THE MANUFACTURER'S PUBLISHED INSTALLATION GUIDE LIMITS.
- WALLS:
FINISH EXISTING OR NEW GYPSUM WALLBOARD SURFACES WITH TWO COATS OF A HIGH-QUALITY LATEX, SATIN GLOSS FINISH PAINT OVER A SINGLE COAT LATEX SEALER.
STANDARD OF ACCEPTANCE:
SEALER: CLOVERDALE WEATHERONE INT/EXT. LATEX STAIN BLOCKING PRIMER:
TOP COAT: CLOVERDALE ECOLOGIC COLOUR COAT, MATCH SHEEN OF ADJACENT WALL SURFACES.
- SHOWER CEILING:
FINISH NEW GYPSUM SURFACES WITH TWO COATS OF A HIGH-QUALITY WATER-BORNE ACRYLIC EPOXY, SEMI-GLOSS FINISH PAINT OVER SINGLE COAT OF LATEX SEALER/PRIMER.
STANDARD OF ACCEPTANCE:
SEALER/PRIMER: GLIDDEN ULTRA INTERIOR LATEX PRIMER/SEALER 36600
EPOXY: PPG PITT-GLAZE® WB1 INTERIOR PRE-CATALYZED WATER-BORNE ACRYLIC EPOXY 16-510C
APPLY IN ACCORDANCE WITH MANUFACTURER'S SPECIFICATIONS



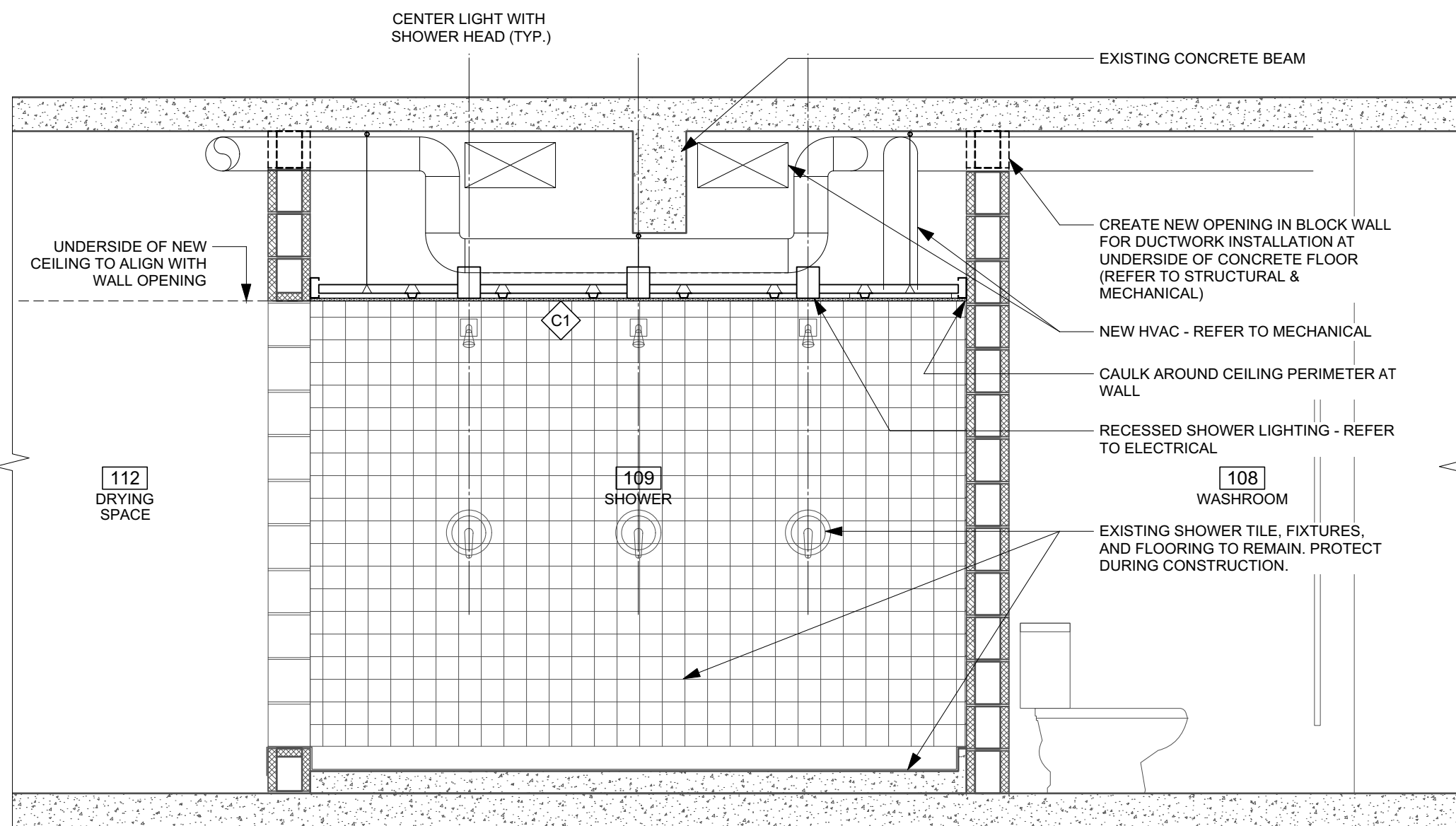
1 MAIN FLOOR PLAN - CHIMNEY CHASE
Scale 3/16" = 1'-0"



2 SHOWER RCP DEMOLITION PLAN
Scale 3/16" = 1'-0"



3 BASEMENT REFLECTED CEILING PLAN
Scale 3/16" = 1'-0"



4 SHOWER SECTION
Scale 1/2" = 1'-0"

RCP DEMOLITION KEYNOTES:

- 1 INCREASE SIZE OF EXISTING WALL PENETRATION TO SUIT NEW MECHANICAL DUCTWORK- SITE VERIFY & REFER TO MECH.
- 2 CREATE NEW PENETRATION IN EXISTING WALL TO SUIT PROPOSED MECHANICAL DUCTWORK- SITE VERIFY & REFER TO MECH.
- 3 DEMOLISH EXISTING SHOWER FAN - REFER TO MECH.
- 4 REMOVE EXISTING SHOWER LIGHT AND TURN OVER TO CITY OF WINNIPEG - REFER TO ELEC.
- 5 DEMOLISH EXISTING SHOWER CEILING AND SUPPORTING STRUCTURE

ASSEMBLY TYPES:

WALL TYPES:

- 1 1 HR FIRE-RATED SHAFTWALL ULC W452:
- 2 5/8" TYPE 'X' GYPSUM BOARD (PAINTED)
- 3 2 1/2" STEEL C-H STUDS @ 24" O.C. (MAX.)
- 4 1" GYPSUM BOARD SHAFTWALL LINER PANELS

CEILING ASSEMBLY

- 1 PITT GLAZE EPOXY PAINT FINISH
- 2 1/2" CGC FIBEROCK AQUA-TOUGH GYPSUM BOARD
- 3 7/8" FURRING CHANNEL @ 16" O.C.
- 4 1 1/2" COLD ROLLED GALVANIZED CHANNEL @ 4'-0" O.C. MAX.

RCP KEYNOTES:

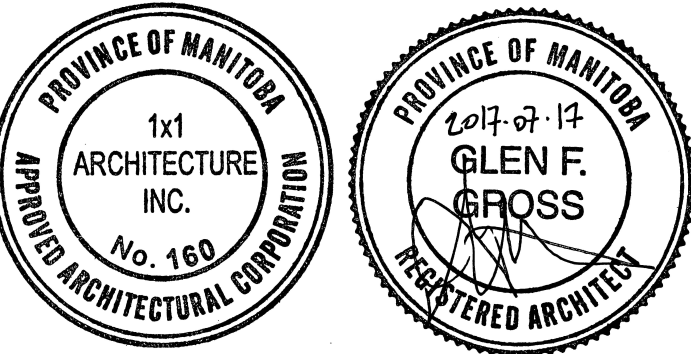
- 1 NEW SHOWER LIGHT - REFER TO ELEC.
- 2 NEW MECHANICAL DIFFUSER - REFER TO MECH.
- 3 NEW SHOWER CEILING
- 4 EXISTING HVAC DUCTING TO REMAIN - REFER TO MECH.
- 5 NEW HVAC SYSTEM DUCTING - REFER TO MECH.
- 6 NEW MECHANICAL CHASE TO HOUSE NEW CHIMNEY - REFER TO MECHANICAL
- 7 NEW CHIMNEY - REFER TO MECHANICAL
- 8 EXISTING CHIMNEY - REFER TO MECHANICAL
- 9 PATCH, REPAIR AND MAKE GOOD ALL HOLES IN WALLS LEFT BY REMOVAL OF EXISTING HVAC SERVICES WITH SAME MATERIALS AS EXISTING WALL CONSTRUCTION.
- 10 PATCH, REPAIR AND MAKE GOOD ALL HOLES IN EXISTING WALL OPENING OR NEW OPENINGS WHICH ARE CREATED LARGER THAN PROPOSED DUCT SIZE. PAINT PATCHED AREAS TO MATCH EXISTING COLOUR.

RCP LEGEND

- 1 CEILING MOUNTED LIGHT FIXTURE
- 2 HVAC DIFFUSER
- 3 NEW WALL PENETRATION
- 4 ENLARGED WALL PENETRATION
- 5 XXXXX CEILING
- 6 8'-0" NEW CEILING HEIGHT
- 7 EX EXISTING CEILING HEIGHT
- 8 EXISTING DOOR HEADER
- 9 EXISTING WALL
- 10 EXISTING 1 HR. FIRE SEPARATION

4	YY.MM.DD	-
3	YY.MM.DD	-
2	YY.MM.DD	-
1	YY.MM.DD	-
0	17.07.18	ISSUED FOR CONSTRUCTION
No.	DATE	REVISION / ISSUANCE

Seal



Architect

Engineer

Project

ST. VITAL ARENA
CHANGE ROOM UPGRADES
580 ST. ANNE'S ROAD, WINNIPEG, MB

Sheet Title

REFLECTED CEILING PLAN
GENERAL NOTES

Project No.

1723

Date

JULY 17, 2017

Sheet

A2.0