

1 BOILER ROOM ELECTRICAL LAYOUT - DEMOLITION
 SCALE: NTS
 E1-R0



2 BOILER ROOM ELECTRICAL LAYOUT - DEMOLITION
 SCALE: NTS
 E1-R0

| SYMBOL LEGEND | |
|---------------|--|
| | BATTERY BANK COMPLETE WITH DOUBLE HEADS |
| | CARBON MONOXIDE DETECTOR/ALARM |
| | COMBINATION MAGNETIC STARTER |
| | DUPLEX RECEPTACLE |
| | DISCONNECT SWITCH (SINGLE LINE DIAGRAM) |
| | DISCONNECT SWITCH (FLOOR PLAN) |
| | EXIT LIGHT C/W DOUBLE HEADS |
| | FUSED DISCONNECT SWITCH |
| | HEAT DETECTOR |
| | JUNCTION BOX |
| | FLUORESCENT LIGHT FIXTURE |
| | MANUAL STARTER (OR TOGGLE SWITCH FOR MOTORS 1/6 HP OR SMALLER C/W BUILT IN OVER-LOAD PROTECTION) |
| | MAGNETIC STARTER |
| | MOTOR |
| | MOLDED CASE CIRCUIT BREAKER |
| | MOTORIZED VALVE |
| | 30A/240V RECEPTACLE |
| | SURFACE MOUNTED PANEL |
| | FIRE ALARM CONTROL PANEL |
| | SWITCH |
| | SWITCH C/W TIMER |
| | THERMOSTAT |
| | TRANSIENT VOLTAGE SURGE SUPPRESSION |

* PLEASE NOTE *
 ALL EQUIPMENT SHOWN "SOLID" IS NEW CONSTRUCTION.
 ALL EQUIPMENT SHOWN "FADED BACK" IS EXISTING TO REMAIN UNLESS OTHERWISE NOTED.
 ALL EQUIPMENT SHOWN "DASHED" IS EXISTING TO BE DEMOLISHED.

GENERAL NOTES

- ALL EQUIPMENT REMOVED UNDER DEMOLITION SCOPE WILL BE FIRST OFFERED TO "THE CITY" FOR REFUSAL FOLLOWED BY CONTRACTOR AND FINALLY TO BE LEGALLY DISPOSED OF.
- CO-ORDINATE WITH "THE CITY" PRIOR TO SHUT-DOWN OF EQUIPMENT.
- CONTRACTOR TO VISIT SITE DURING BID AND VERIFY ALL EXISTING SERVICES. REPORT ANY DISCREPANCIES TO CONTRACT ADMINISTRATOR DURING BID PERIOD.
- CONTRACTOR SHALL BE RESPONSIBLE FOR COORDINATING EXACT LAYOUT, ROUTING, ETC. VERIFY EXISTING SERVICES ON SITE.
- CONTRACTOR SHALL ENSURE COORDINATION BETWEEN ALL TRADES AND CONTRACT ADMINISTRATOR, ON AND OFF SITE, AS REQUIRED FOR INSTALLATION OF ELECTRICAL EQUIPMENT.
- ALL WORK MUST BE VERIFIED BY SITE MEASUREMENTS AND WITH THE FINAL EQUIPMENT SELECTION.
- FIRESTOP EXISTING AND NEW OPENINGS.
- PATCH AND REPAIR SURFACES AS REQUIRED.
- ALL PENETRATIONS THROUGH FULL HEIGHT WALL PARTITIONS, PROVIDE OPENINGS TO SUIT CONDUIT AND CABLE PENETRATIONS. SEAL ALL PENETRATIONS THROUGH FIRE RATED WALLS WITH FIRE STOP MATERIAL AS REQUIRED. SEAL ALL PENETRATIONS THROUGH SOUND WALLS ACoustically.
- ALL ABANDONED WIRING AND EQUIPMENT TO BE REMOVED FROM BOILER ROOM.
- ALL ABANDONED PNEUMATIC TUBES TO BE REMOVED FROM BOILER ROOM.
- PROVIDE LAMACOID LABELS ON EQUIPMENT.

DEMOLITION KEY NOTES

- DEMOLISH ALL EXISTING ELECTRICAL EQUIPMENT, CABLES, WIRING IN CONDUIT, BACKBOARD, WIREWAY, RECEPTACLE, SWITCH, ETC. LOCATED ALONG THIS WALL, UNLESS OTHERWISE NOTED.
- CONTROLS NOT SHOWN ON THIS WALL TO REMAIN. CONFIRM WITH "THE CITY" PRIOR TO REMOVAL.
- CUT EXISTING CONDUIT AT FLOOR LEVEL AND MAKE FLUSH TO SURFACE. UNDERGROUND PORTION TO BE ABANDONED IN PLACE. SEAL/CAP CONDUIT.
- TO BE REPLACED WITH NEW.
- TO REMAIN FOR RE-USE.
- EXISTING PANEL C TO BE REPLACED WITH NEW.
- OPEN NUMBER.
- EXISTING EQUIPMENT ASSOCIATED WITH NEW WATER SYSTEM, JOHNSON CONTROLS, ETS CONTROL, FILTERING, ETC., NOT SHOWN IN THIS ROOM TO REMAIN. REPLACE ALL ASSOCIATED 'BX' WIRING WITH NEW.
- REPLACE WIRING BACK TO PANEL.
- IF CABLES OR WIRING IN CONDUIT EXIT FROM THIS ROOM TO BE CUT AT WALL/CEILING PENETRATION IN THIS ROOM AND REPLACED WITH NEW WITHIN THIS ROOM. EXISTING SECTION OF CABLES OR WIRING IN CONDUIT IN OTHER AREAS TO REMAIN, UNLESS OTHERWISE NOTED.
- REMOVE MANUAL STARTER AND WIRING BACK TO PANEL. PUMP TO REMAIN.
- FIRE ALARM PANEL, HEAT DETECTOR AND ASSOCIATED WIRING TO REMAIN. WILL BE REPLACED AS PART OF FUTURE PROJECT. REPLACE ONLY FEEDER TO FIRE ALARM PANEL.
- REMOVE PLYWOOD BOARDS BEHIND DISTRIBUTION EQUIPMENT ON THIS WALL.
- LOAD NAME IS PENCIL-IN ON WALL NEAR STARTER. BLANK-OFF NAME.
- ATTACH PROBE TO DUCT AS REQUIRED.
- TO BE REMOVED.

| 6 | | |
|-----|---------------------------|---------------|
| 5 | | |
| 4 | | |
| 3 | | |
| 2 | | |
| 1 | | |
| 0 | ISSUED FOR BID SUBMISSION | SB 03/08/2017 |
| NO. | Description | BY |
| | | DDMMYY |

ENGINEERS GEOSCIENTISTS MANITOBA
Certificate of Authorization
SMS Engineering Ltd.
 No. 166

PROVINCE OF MANITOBA
S. BLAZEWSKI
 AUG. 3, 2017
 Member # 24015
 REGISTERED PROFESSIONAL ENGINEER

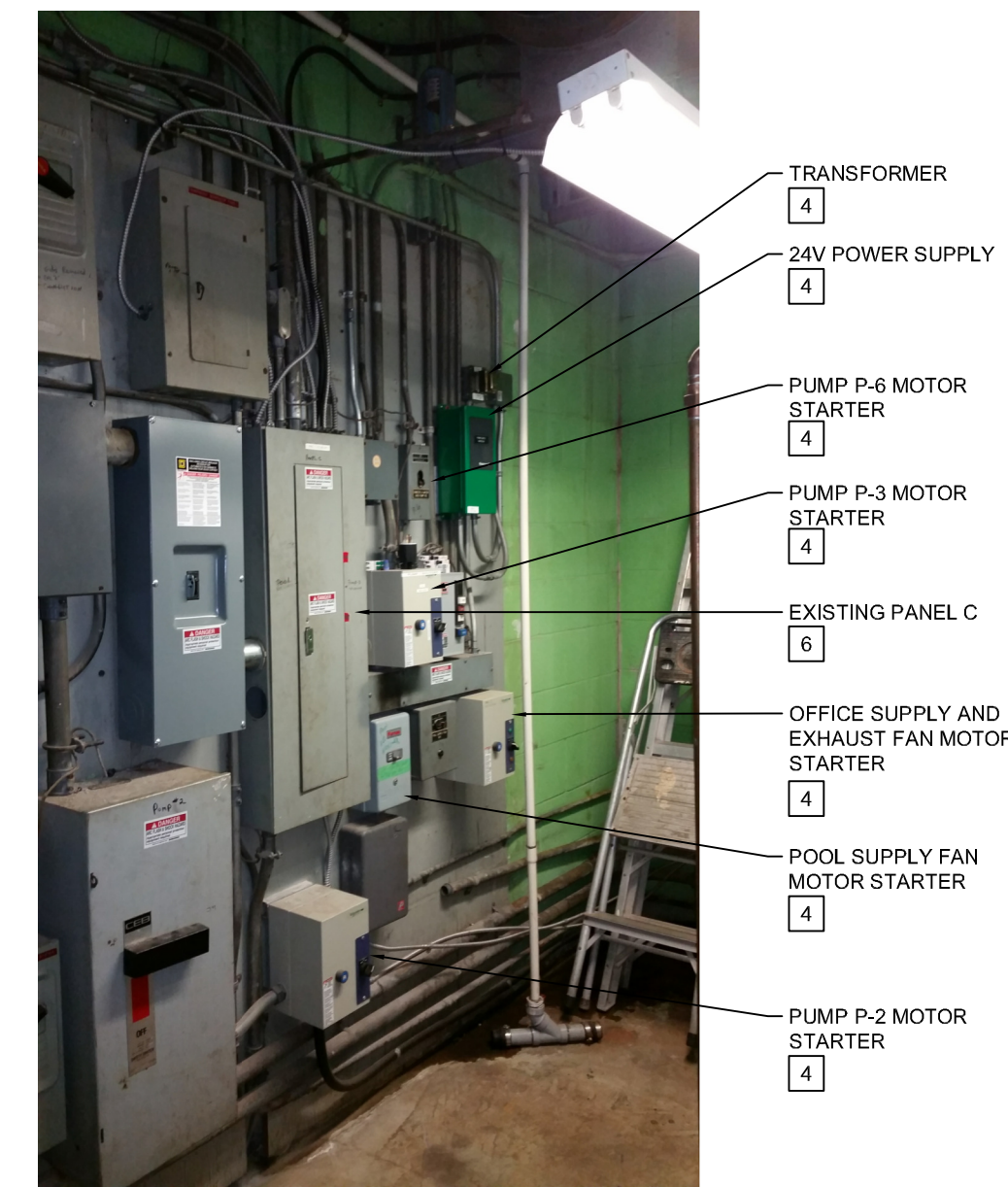
770 Bradford Street
 Winnipeg, Canada
 T 204 775 0291
 SMSeng.com

SMS ENGINEERING

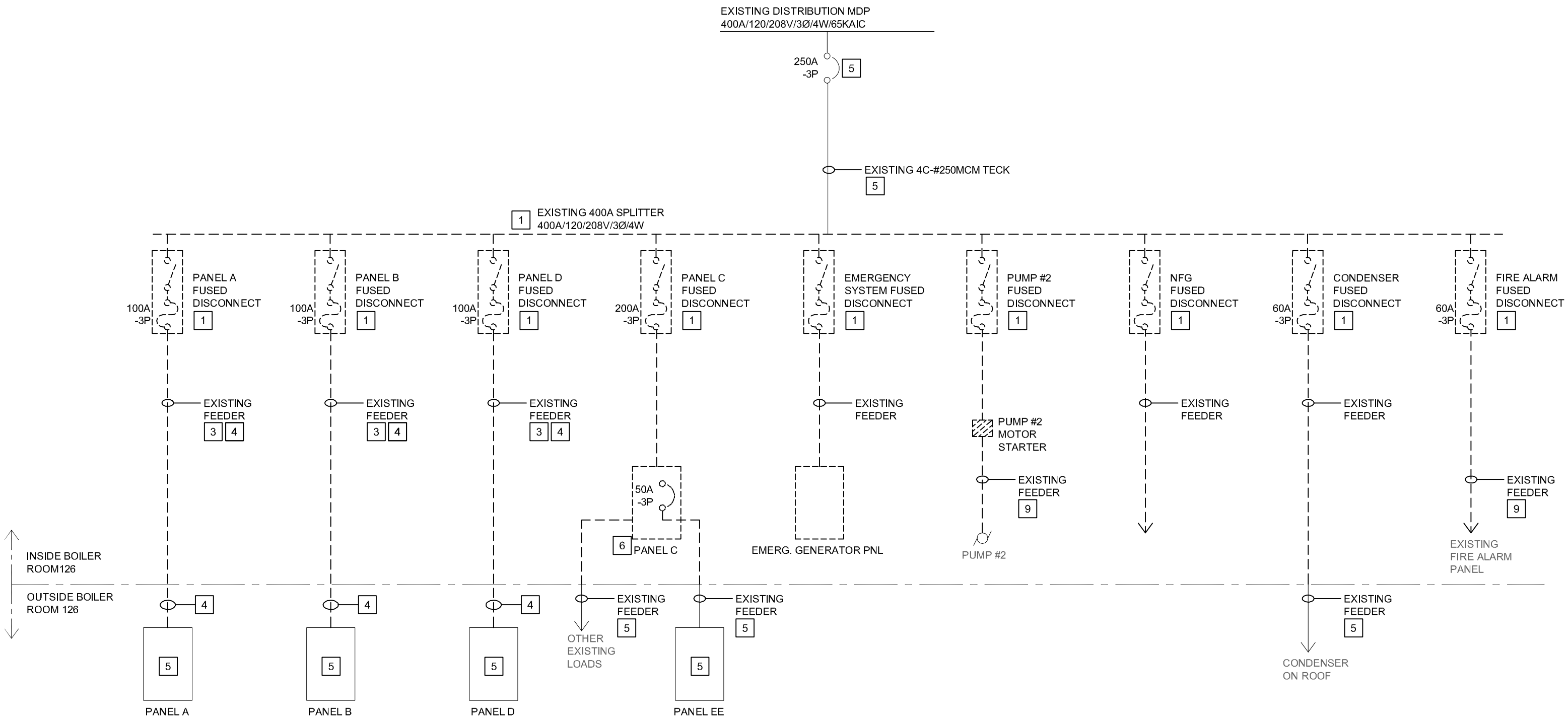
Project Title
ELECTRICAL DISTRIBUTION UPGRADE MARGARET GRANT POOL
 685 DALHOUSIE DR, WPG MANITOBA

Drawing Title
GENERAL NOTES, SYMBOL LEGEND AND ELECTRICAL - DEMOLITION

| | | |
|----------------------|-------------------------|--------------------------|
| Drawn By EBB | Checked By EBB | Approved By SB |
| Scale AS SHOWN | Date MAY 2017 | Project No. 17-187-01 |
| Revision Number 0 | Drawing Number E1-R0 | Sheet Order 1 OF 2 |



3 BOILER ROOM ELECTRICAL LAYOUT - DEMOLITION
 SCALE: NTS
 E1-R0



4 PARTIAL SINGLE LINE DIAGRAM - DEMOLITION
 SCALE: NTS
 E1-R0