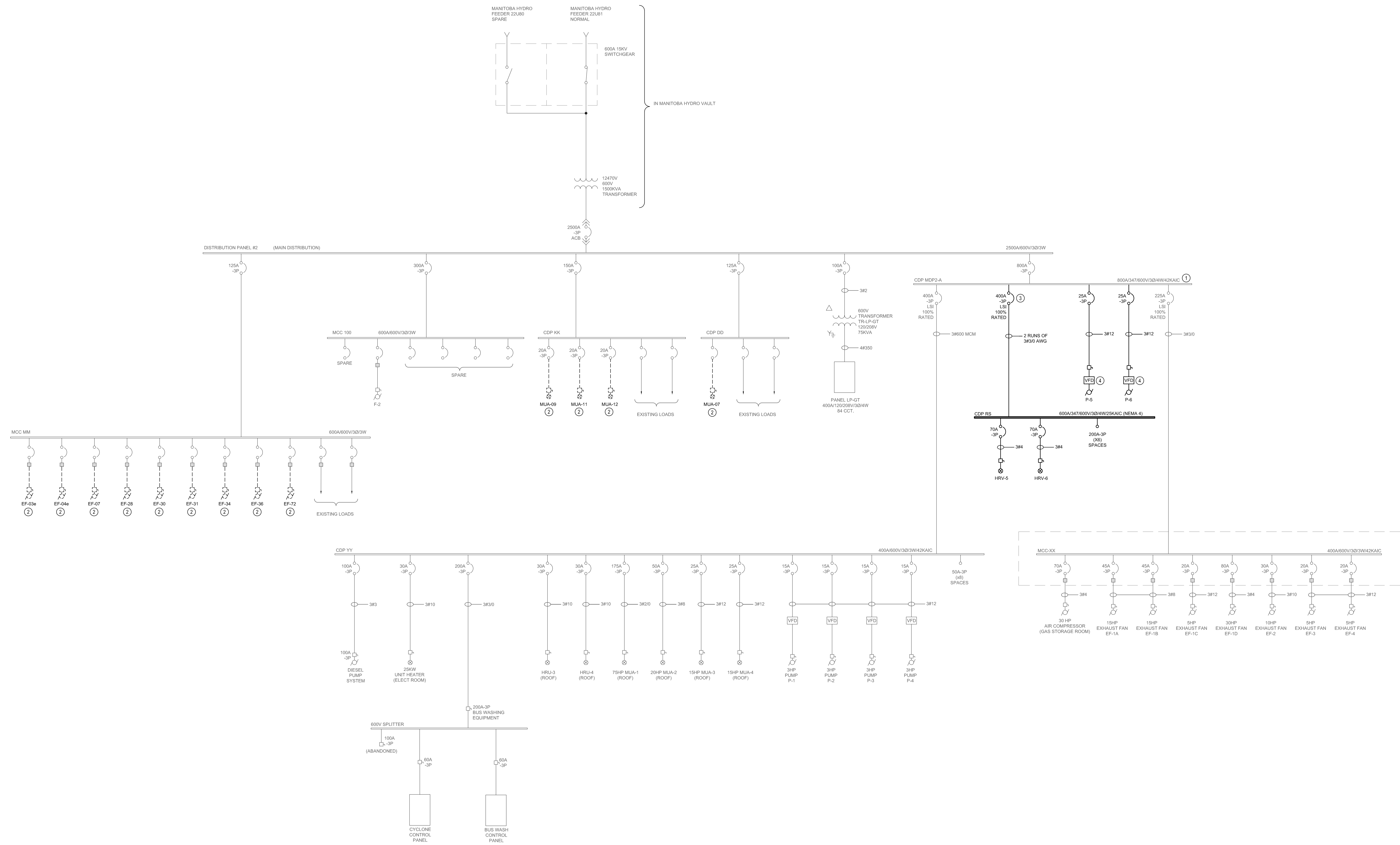


**GENERAL NOTES**

- A. ALL WIRING INDOORS TO BE RW90 COPPER IN EMT CONDUIT UNLESS OTHERWISE NOTED.
- B. PROVIDE BOND CONDUCTOR IN ALL CONDUIT RUNS.
- C. REMOVE ALL ABANDONED EQUIPMENT AND SERVICES WITHIN AREA OF WORK.
- D. THIS BUILDING MAY CONTAIN ASBESTOS. REFER TO FRONT END SPECIFICATIONS FOR FURTHER INFORMATION.

**KEY NOTES**

- 1. CDP MOUNTED ON END OF MAIN DISTRIBUTION, PANEL #2.
- 2. EXISTING EQUIPMENT TO BE REMOVED, REMOVE WIRING/CONDUIT BACK TO SOURCE, REFER TO DRAWING E1.1.
- 3. BREAKER TRIP SETTINGS TO BE PROVIDED BY CONTRACT ADMINISTRATOR. OBTAIN SETTINGS PRIOR TO INSTALLATION OF BREAKER. ALLOW MINIMUM 10 WORKING DAYS FOR PROVISION OF SETTINGS UPON REQUEST. PROGRAM AND TEST BREAKERS. PROVIDE TEST REPORT TO CONTRACT ADMINISTRATOR FOR REVIEW.
- 4. VFD IS INTEGRAL TO PUMP (NOT SEPARATE EQUIPMENT).



5			
4			
3			
2			
1			
0	ISSUED FOR CONSTRUCTION	VEK	21/08/17
NO.	Description	BY	DD/MM/YY



Project Title  
**CITY OF WINNIPEG FORT ROUGE TRANSIT BASE - STORAGE TRACK 1-12 VENTILATION UPGRADE**  
 WINNIPEG MANITOBA

Drawing Title  
**DISTRIBUTION SINGLE LINE**

Drawn By IN	Checked By VEK	Approved By VEK
Scale AS SHOWN	Date AUGUST 2017	Project No. 16-149-02
Revision Number 0	Drawing Number E3.1	Sheet Order 3 OF 3