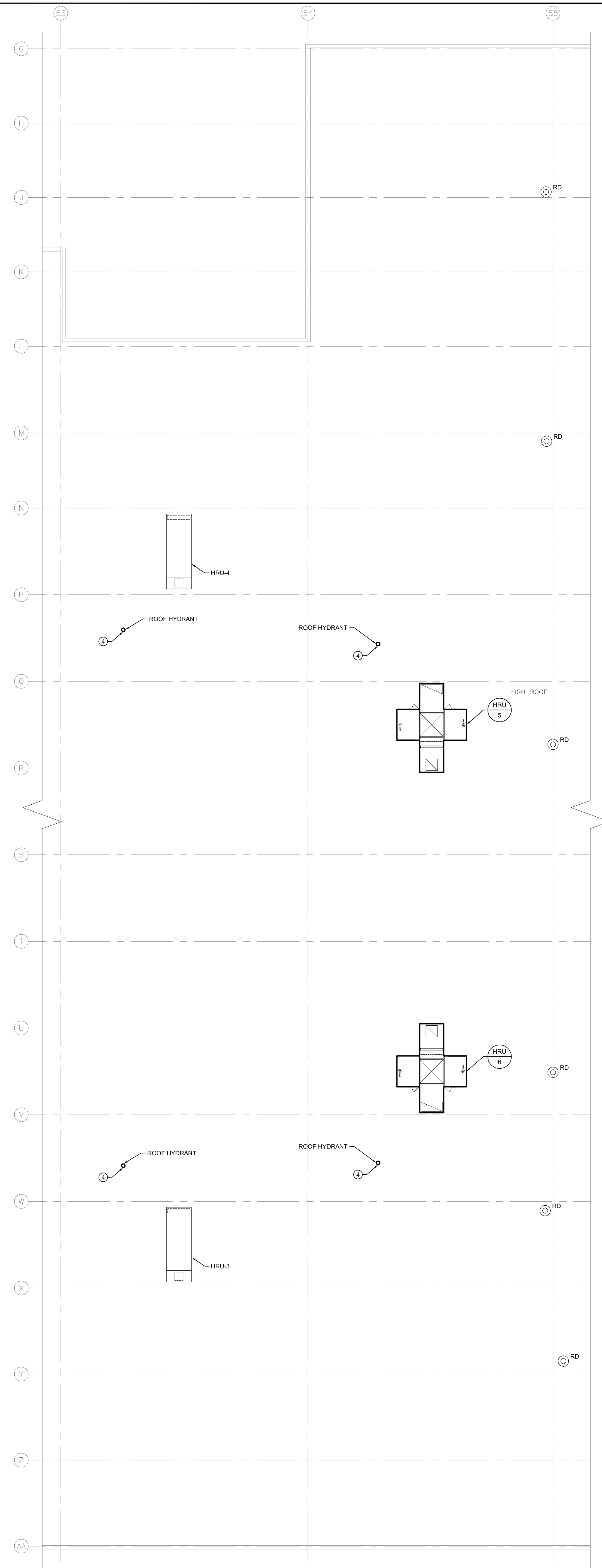
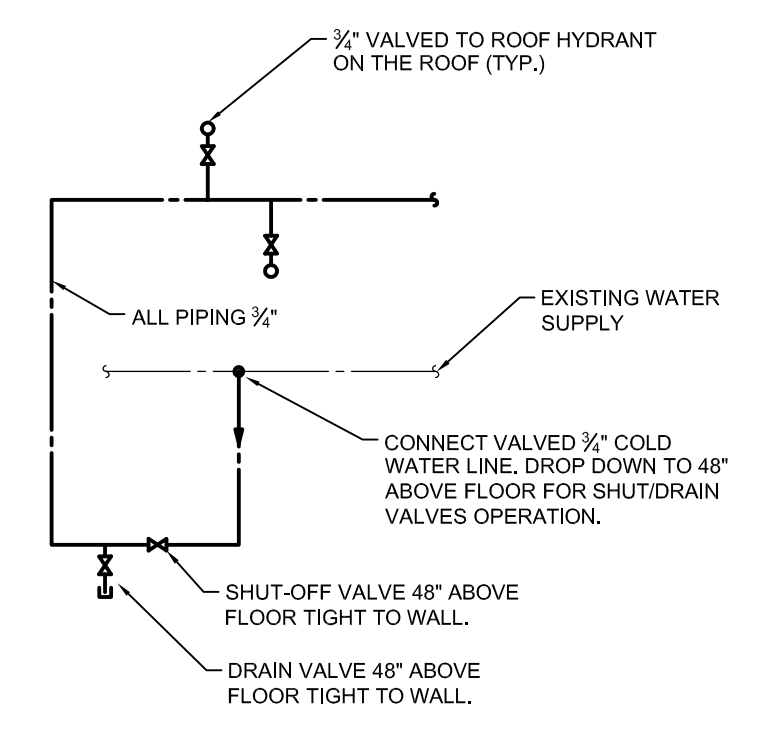


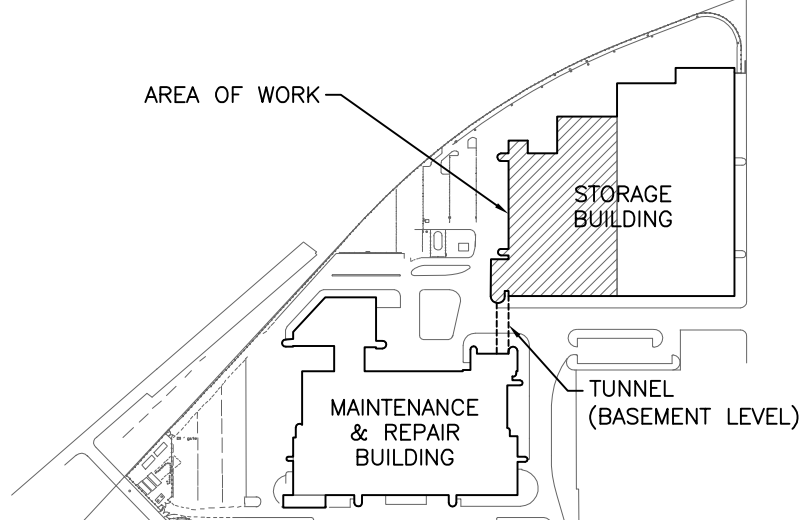
1 MAIN FLOOR PLAN - NEW CONSTRUCTION - PLUMBING
SCALE: 1/16" = 1'-0"



2 ROOF PLAN - NEW CONSTRUCTION - PLUMBING
SCALE: 1/16" = 1'-0"



3 SCHEMATIC DETAILS
SCALE: NTS



KEY PLAN
NTS

GENERAL NOTES

- A. ALL ABANDONED EQUIPMENT AND SERVICES WITHIN AREA OF WORK SHALL BE REMOVED.
- B. THIS BUILDING MAY CONTAIN ASBESTOS. REFER TO FRONT END SPECIFICATIONS FOR FURTHER INFORMATION.

KEY NOTES

- 1. CONNECT TO ROOF HYDRANT ABOVE ON ROOF.
- 2. CONNECT TO EXISTING WATER SUPPLY PIPING LINE. CONTRACTOR TO VERIFY EXACT LOCATION ON SITE.
- 3. REFER TO SCHEMATIC 3M2.1 FOR DETAILS OF NEW ROOF HYDRANT SYSTEM.
- 4. NEW ROOF HYDRANT LOCATED BESIDE BOTTOM OF STAIR. COORDINATE FINAL LOCATION ON SITE.

5			
4			
3			
2			
1			
0	ISSUED FOR CONSTRUCTION	JH	21/08/17
NO.	Description	BY	DD/MM/YY



Project Title
CITY OF WINNIPEG FORT ROUGE
TRANSIT BASE - STORAGE TRACK
1-12 VENTILATION UPGRADE

Drawing Title
WINNIPEG MANITOBA
MAIN FLOOR AND ROOF PLAN -
NEW CONSTRUCTION -
PLUMBING

Drawn By	GB	Checked By	XZ	Approved By	JH
Scale	AS SHOWN	Date	AUGUST 2017	Project No.	16-149-02
Revision Number		Drawing Number		Sheet Order	
	0		M2.1		4 OF 9

H:\R2_M2\F1_L1\WG - AUGUST 18, 2017 - 10:PM CST - GB\AL