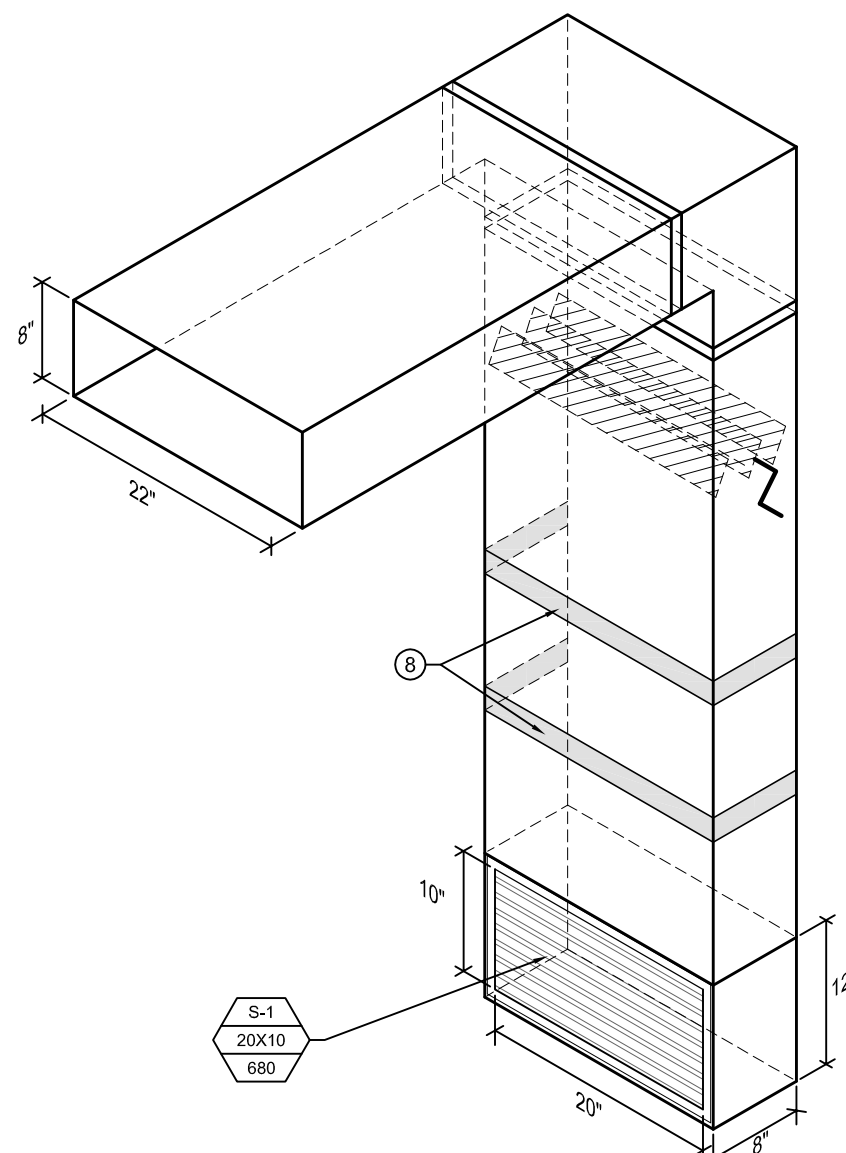
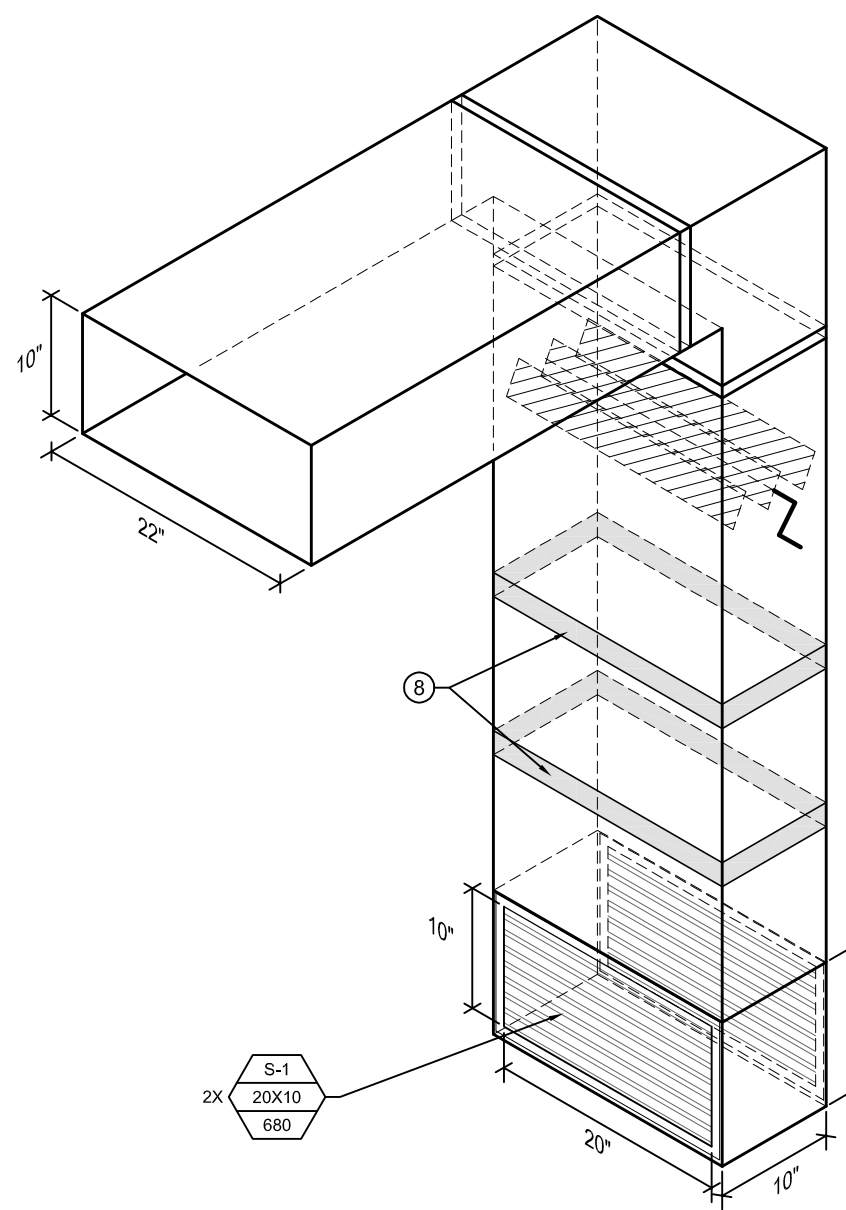


1 MAIN FLOOR PLAN - NEW CONSTRUCTION - VENTILATION
SCALE: 1/16" = 1'-0"

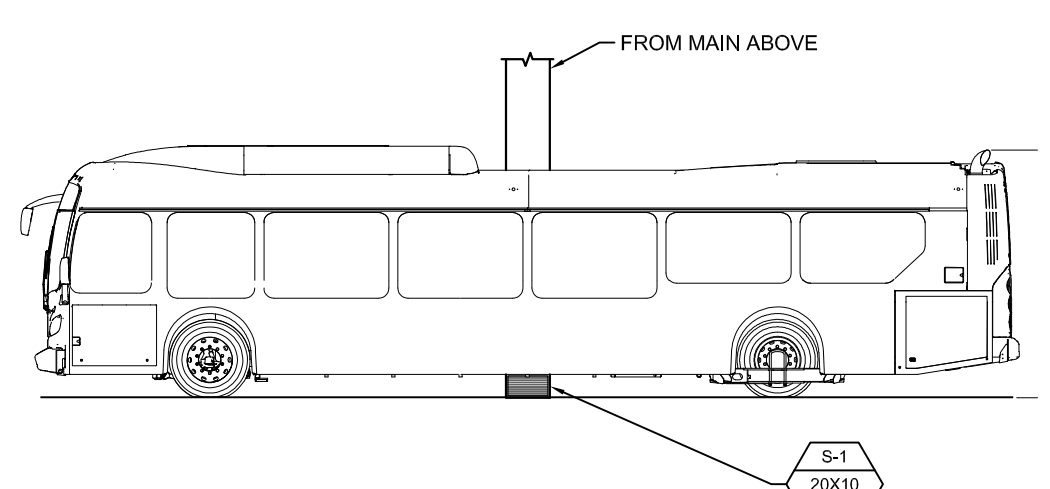
AS INDICATED ON STRUCTURAL DRAWING THE EXIST ROOF HAS BEEN DESIGNED FOR 36 psf LIVE LOAD. THE CONTRACTOR IS TO DETERMINE AN APPROPRIATE METHOD OF TRANSPORTING MATERIALS & MECHANICAL UNITS TO THE FINAL LOCATION WITHOUT EXCEEDING THIS DESIGN LOAD. ANY TRANSPORTATION METHOD SHOULD ENSURE PROTECTION OF THE EXIST ROOF SURFACE & UNDERLYING INSULATION.



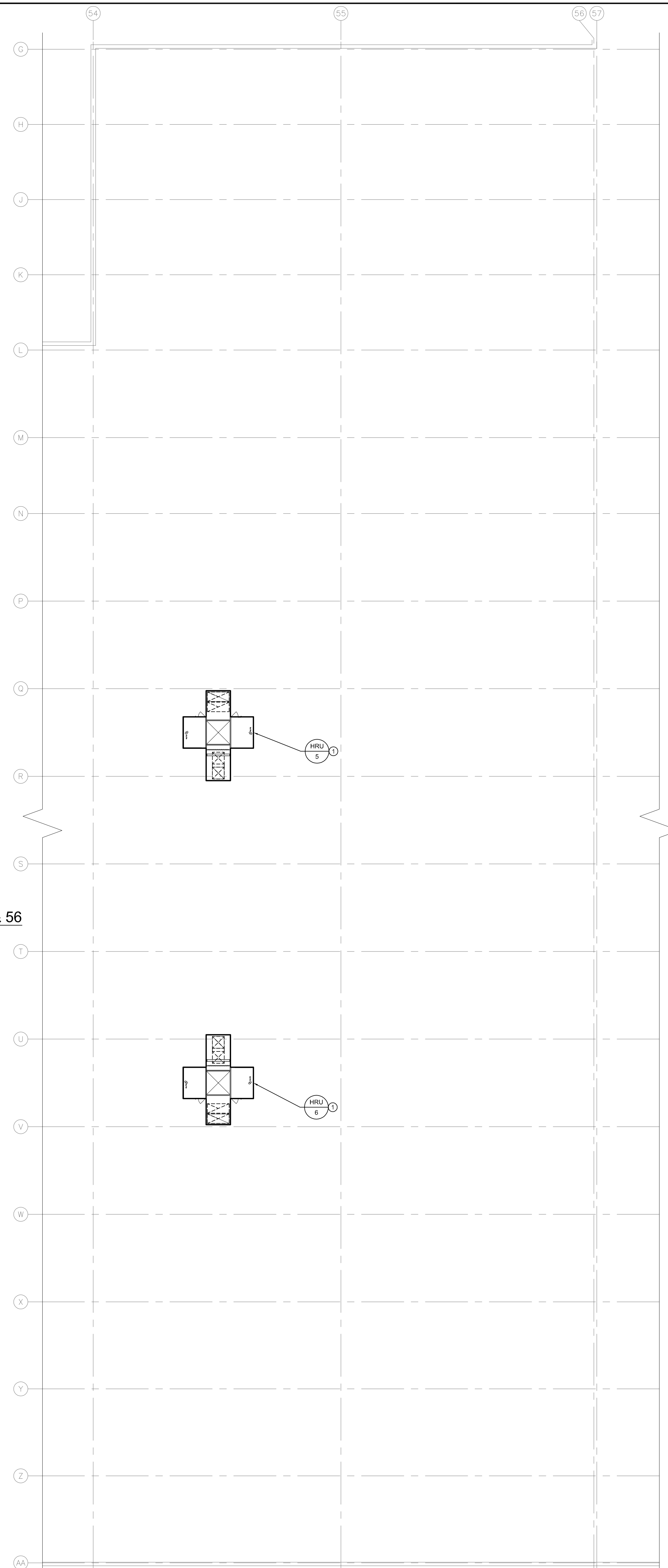
3 SUPPLY AIR PLENUM DETAIL ALONG GRIDLINE 54 & 56
SCALE: N.T.S.



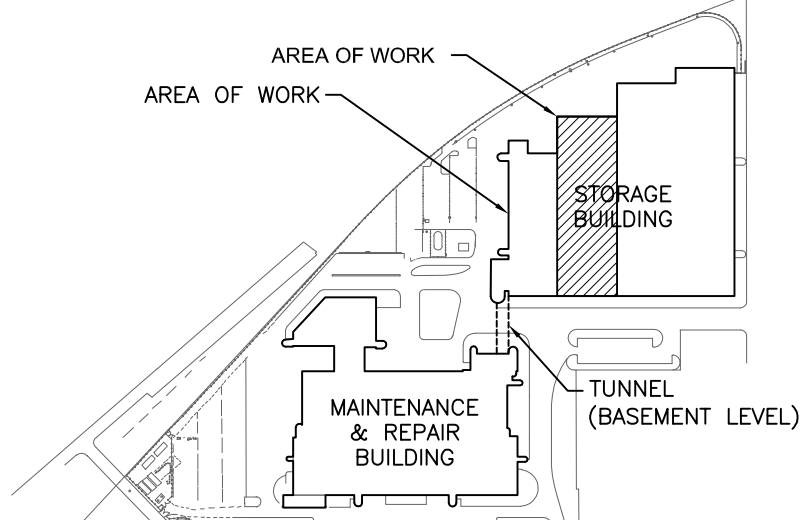
4 SUPPLY AIR PLENUM DETAIL ALONG GRIDLINE 55
SCALE: N.T.S.



5 BUS - SECTION
SCALE: N.T.S.



2 ROOF PLAN - NEW CONSTRUCTION - VENTILATION
SCALE: 1/16" = 1'-0"



KEY PLAN
NTS

GENERAL NOTES

A. THIS BUILDING MAY CONTAIN ASBESTOS. REFER TO FRONT END SPECIFICATIONS FOR FURTHER INFORMATION.

KEY NOTES

- HRU TO BE MOUNTED ON STRUCTURAL STAND, REFER TO STRUCTURAL AND NOTE ON THIS DRAWING FOR TRANSPORTING OF HRU ON ROOF.
- INSTALL DUCTWORK TO UNDERSIDE OF JOIST TO MAINTAIN MINIMUM 144" CLEAR.
- RUN DUCT DOWN WALL TO SUPPLY GRILLE AT FLOOR LEVEL C/W BALANCING DAMPER ON BRANCH, SUPPORT DUCT FROM WALL.
- SUPPLY AIR GRILLE AT LOW LEVEL, 42" ABOVE FLOOR, REFER TO 3M4.1 AND 4M4.1 FOR DUCTWORK DETAILS.
- RUN DUCT DOWN COLUMN TO SUPPLY GRILLES AT FLOOR LEVEL C/W BALANCING DAMPER ON BRANCH, SUPPORT DUCT FROM COLUMN.
- OPEN ENDED EXHAUST OPENING C/W WIREMESH, AT HIGH LEVEL.
- DUCT MAINS RUNNING NORTHSOUTH SHALL BE INSTALLED ABOVE A SINGLE BUS LANE TO ALLOW OTHER LANES TO REMAIN ACTIVE DURING CONSTRUCTION.
- PROVIDE YELLOW BANDING ON DUCT DROPS FOR VISUAL INDICATION.
- PROVIDE MOTORIZED DAMPER AT ROOF LINE.
- THEORETICAL AIR FLOW PATTERN FROM SUPPLY GRILLES WITH A 0" VERTICAL DEFLECTION AND 22.5" HORIZONTAL DEFLECTION, REFER TO SPECIFICATION FOR SMOKE TEST REQUIREMENT AND ADJUSTMENT OF GRILLES DURING COMMISSIONING.
- DUCTS RUNNING EASTWEST TO BE RECESSED UP INTO JOIST SPACE.
- OFFSET NEW DUCT TO AVOID EXISTING PIPE INTERFERENCE WHILE MAINTAINING 144" CLEAR HEIGHT REQUIREMENT.
- NEW DUCT TO RISE ABOVE EXISTING DUCT.

5			
4			
3			
2			
1			
0	ISSUED FOR CONSTRUCTION	JH	21/08/17
NO.	Description	BY	DD/MM/YY

ENGINEERS
GEOLOGISTS
MANITOBA
Certificate of Authorization
SMS Engineering Ltd.
No. 166



770 Bradford Street
Winnipeg, Canada
T 204 775 0291
SMS
ENGINEERING



Project Title
CITY OF WINNIPEG FORT ROUGE
TRANSIT BASE - STORAGE TRACK
1-12 VENTILATION UPGRADE
WINNIPEG MANITOBA

Drawing Title
MAIN FLOOR AND ROOF PLAN -
NEW CONSTRUCTION -
VENTILATION

Drawn By	GB / IE	Checked By	XZ	Approved By	JH
Scale	AS SHOWN	Date	AUGUST 2017	Project No.	16-149-02
Revision Number		Drawing Number		Sheet Order	
0		M4.1		6 OF 9	