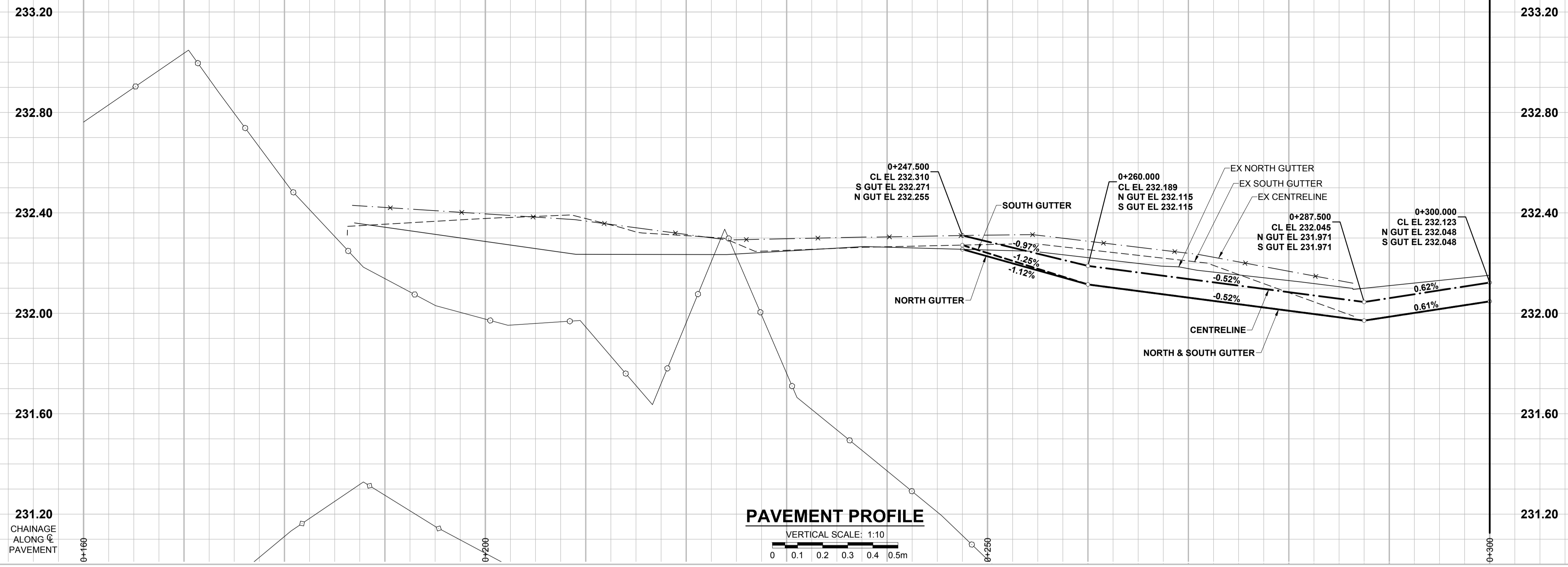


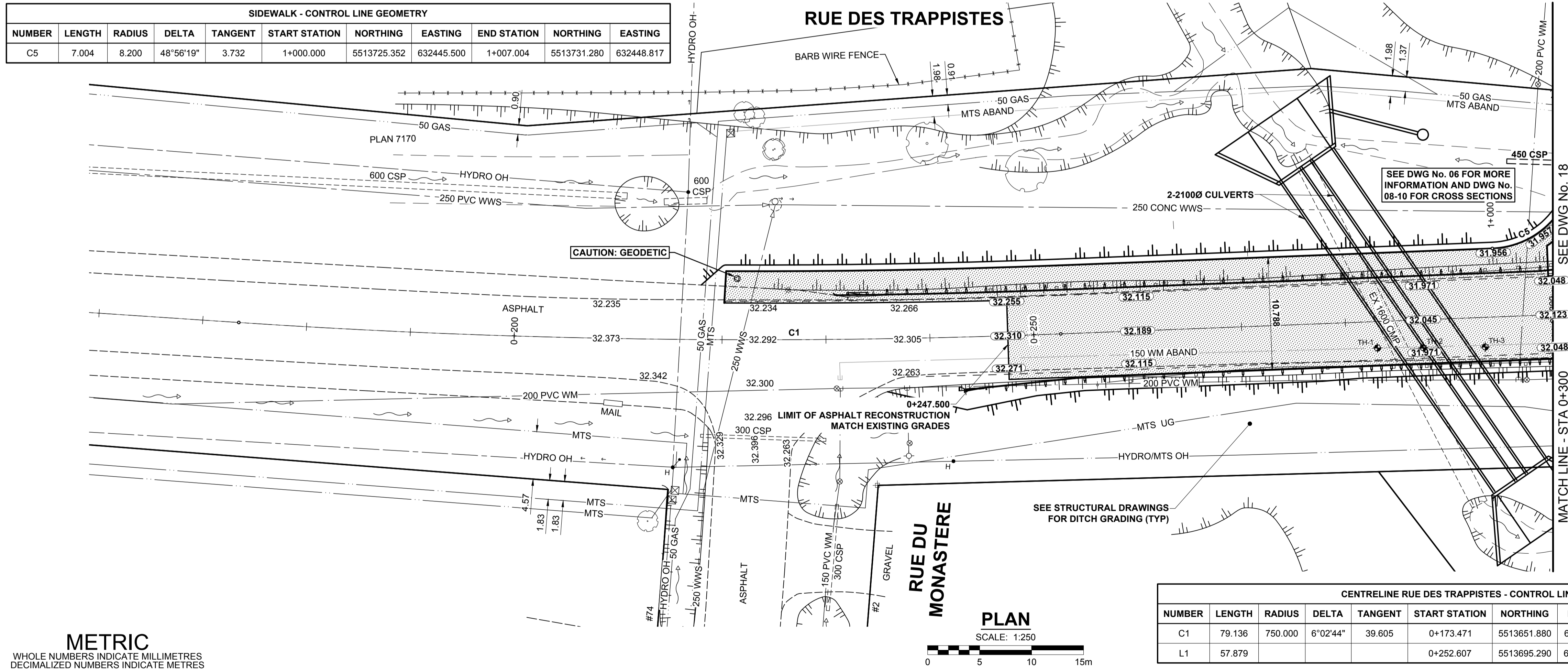
ISC A1 - 594mm x 841mm



- NOTES**
- ADJUST MH AND CB RIMS TO NEW GRADES.
 - CONTRACTOR TO REGRADE/RENEW EXISTING PRIVATE SIDEWALKS TO LIMITS AS SHOWN. SIDEWALKS TO BE RENEWED WITH CONCRETE UNLESS NOTED OTHERWISE.
 - CONTRACTOR TO TAKE PRECAUTIONARY STEPS TO PROTECT EXISTING TREES WITHIN THE LIMITS OF CONSTRUCTION FROM DAMAGE FROM CONSTRUCTION ACTIVITIES AS OUTLINED IN THE SPECIFICATIONS.
 - MODIFIED BARRIER CURB TO BE CONSTRUCTED AT ALL INTERSECTION RADII, BACK LANE RADII AND BULLNOSES.
 - CONTRACTOR TO CONFIRM THE LOCATION OF ALL UTILITIES/SERVICES IN THE FIELD PRIOR TO CONSTRUCTION.
 - ADD 200.000m TO ABBREVIATED ELEVATIONS TO OBTAIN GEODETIC ELEVATIONS.
 - ALL DIMENSIONS TO BACK OF CURB/EDGE OF ASPHALT.

SIDEWALK - CONTROL LINE GEOMETRY

NUMBER	LENGTH	RADIUS	DELTA	TANGENT	START STATION	NORTHING	EASTING	END STATION	NORTHING	EASTING
C5	7.004	8.200	48°56'19"	3.732	1+000.000	5513725.352	632445.500	1+007.004	5513731.280	632448.817



CENTRELINE RUE DES TRAPPISTES - CONTROL LINE GEOMETRY

NUMBER	LENGTH	RADIUS	DELTA	TANGENT	START STATION	NORTHING	EASTING	END STATION	NORTHING	EASTING
C1	79.136	750.000	6°02'44"	39.605	0+173.471	5513651.880	632349.591	0+252.607	5513695.290	632415.714
L1	57.879				0+252.607	5513695.290	632415.714	0+310.487	5513729.561	632462.356

METRIC
WHOLE NUMBERS INDICATE MILLIMETRES
DECIMALIZED NUMBERS INDICATE METRES

EXISTING	LEGEND - PLAN	NEW	EXISTING	LEGEND - PLAN	NEW	EXISTING	LEGEND - PLAN	NEW
---	GAS	○	MANHOLE	●	CONCRETE PAVEMENT	[Pattern]	LOCATION APPROVED UNDERGROUND STRUCTURES	[Pattern]
---	MTS HANDWELL/PEDESTAL	□	CATCH BASIN/CATCH PIT	■	CONC SIDEWALK/MEDIAN	[Pattern]		
---	HYDRO HANDWELL/CABINET	△	CURB INLET WITH BOX	▲	ASPHALT PAVEMENT	[Pattern]		
---	CATV/FIBRE OPTIC	○	TREE	○	PAVING STONE	[Pattern]		
---	TRAFFIC SIGNALS/PIT	⊕	TEST HOLE	⊕	GRAVEL	[Pattern]		
---	LAND DRAINAGE SEWER	TH-12	PROPERTY LINE	---	RAMP CURB	[Pattern]		
---	SANITARY/COMBINED SEWER	⊕	SURVEY BAR	---	PLANING/REMOVAL	[Pattern]		
---	CB LEAD/SSP/DCP	---	FENCE	---				
---	WATERMAIN	---	BOC/EDGE OF PAVEMENT	---				
---	SUBDRAIN	33.000	ELEVATION	(33.333)				
---	DITCH	---	TRAFFIC SIGN	---				

LOCATION APPROVED UNDERGROUND STRUCTURES

DATE: _____

NOTE: LOCATION OF UNDERGROUND STRUCTURES AS SHOWN ARE BASED ON THE BEST INFORMATION AVAILABLE BUT NO GUARANTEE IS GIVEN THAT ALL EXISTING UTILITIES ARE SHOWN OR THAT THE GIVEN LOCATIONS ARE EXACT. CONFIRMATION OF EXISTENCE AND EXACT LOCATION OF ALL SERVICES MUST BE OBTAINED FROM THE INDIVIDUAL UTILITIES BEFORE PROCEEDING WITH CONSTRUCTION.

BM 88-029 N. side Rue des Trappistes, @ Rue Du Monastere; ELEV 231.421 m
Tall. on top of 0.05 m dia. x 2.4 m iron pipe, 23.5 m W. of W. wall & 22.0 m N. of N. wall of attached garage on N. side of No. 2 Rue Du Monastere.

NO.	ISSUED FOR TENDER	DATE	BY
0	17/09/15	GFC	
	YY/MM/DD		

MORRISON HERSHFIELD

DESIGNED BY: GFC
DRAWN BY: DML
CHECKED BY: RPB
APPROVED BY: BWB
RELEASED FOR CONSTRUCTION

HOR SCALE: 1:250
VERT SCALE: 1:10

DATE: 17/08/04

PROFESSIONAL'S SEAL
PROVINCE OF MANITOBA
G.F. COOLIDGE
REGISTERED PROFESSIONAL ENGINEER
CONSULTANT FILE NAME: 5160966-PP-01.dwg

THE CITY OF WINNIPEG
PUBLIC WORKS DEPARTMENT
ENGINEERING DIVISION

RUE DES TRAPPISTES AT WESTENDORF COULEE CULVERT REPLACEMENT AND ROAD RECONSTRUCTION
RUE DES TRAPPISTES
HORIZONTAL AND VERTICAL ALIGNMENT
RUE DU MONASTERE TO STA 0+300

CITY DRAWING NUMBER: N/A
SHEET 17 OF 22
DRAWING No. REV 17 0

ENGINEERS GEOSCIENTISTS MANITOBA
Certificate of Authorization
MORRISON HERSHFIELD
No. 1736

BID OPPORTUNITY No. 698-2017

K:\Projects\698966\09_Design\05_Design\05_Sheets\Roadworks\5160966-PP-01.dwg Last Saved: 9/13/2017 1:52 PM by dlane Pldt: 9/13/2017 1:52 PM by Dave Lane