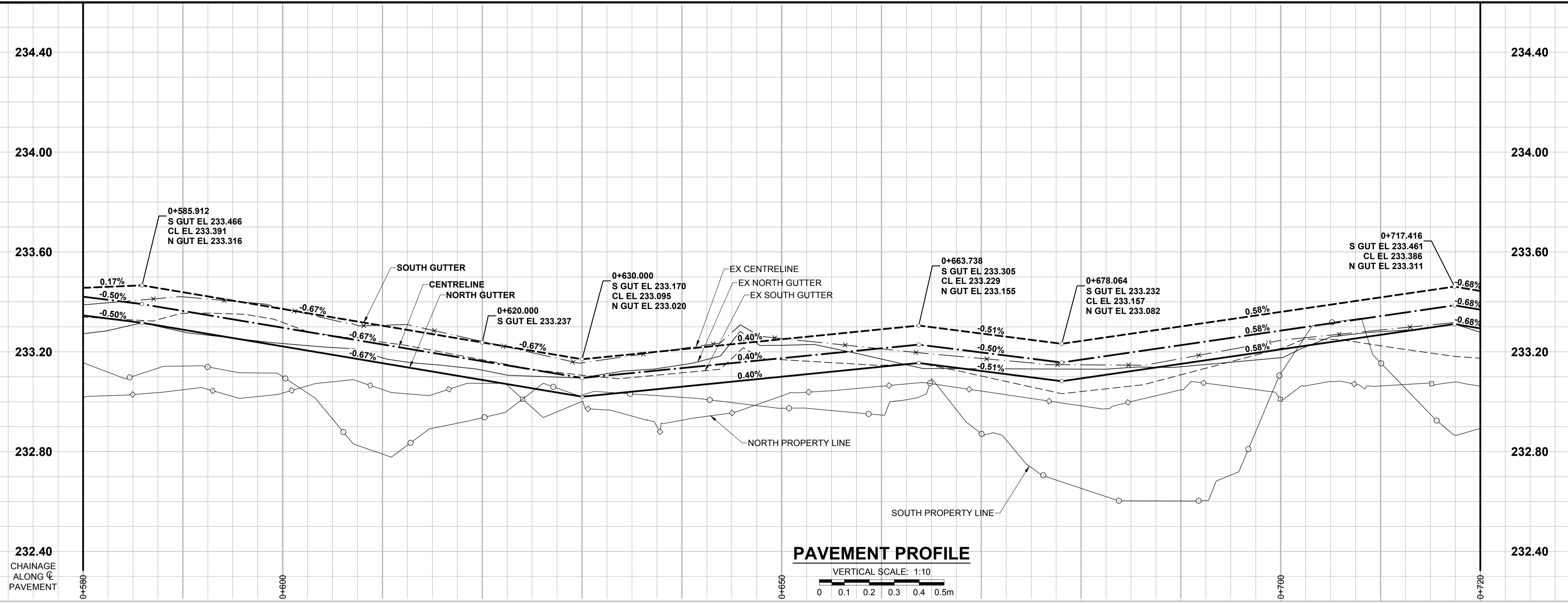
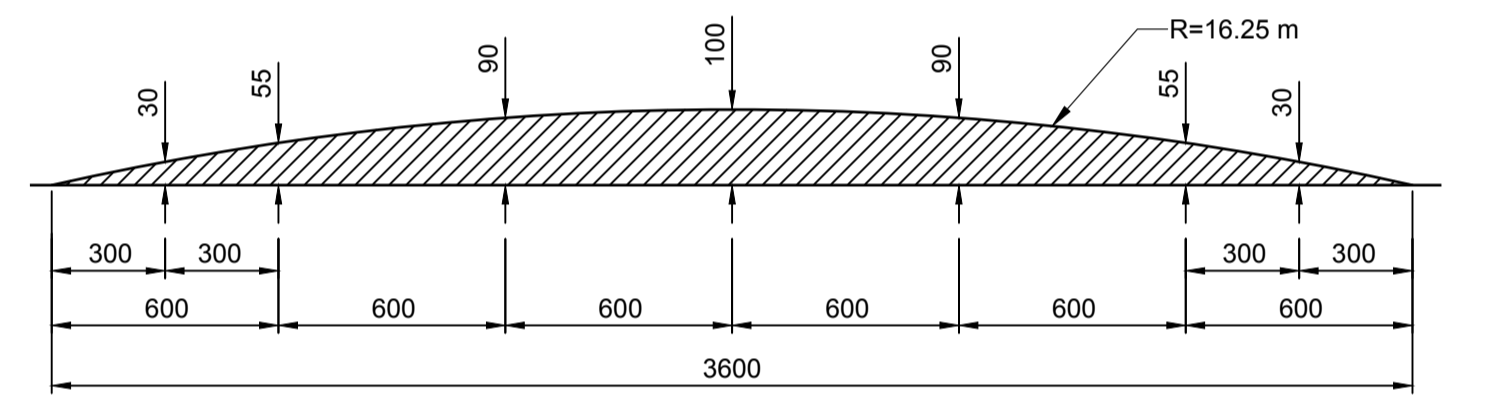
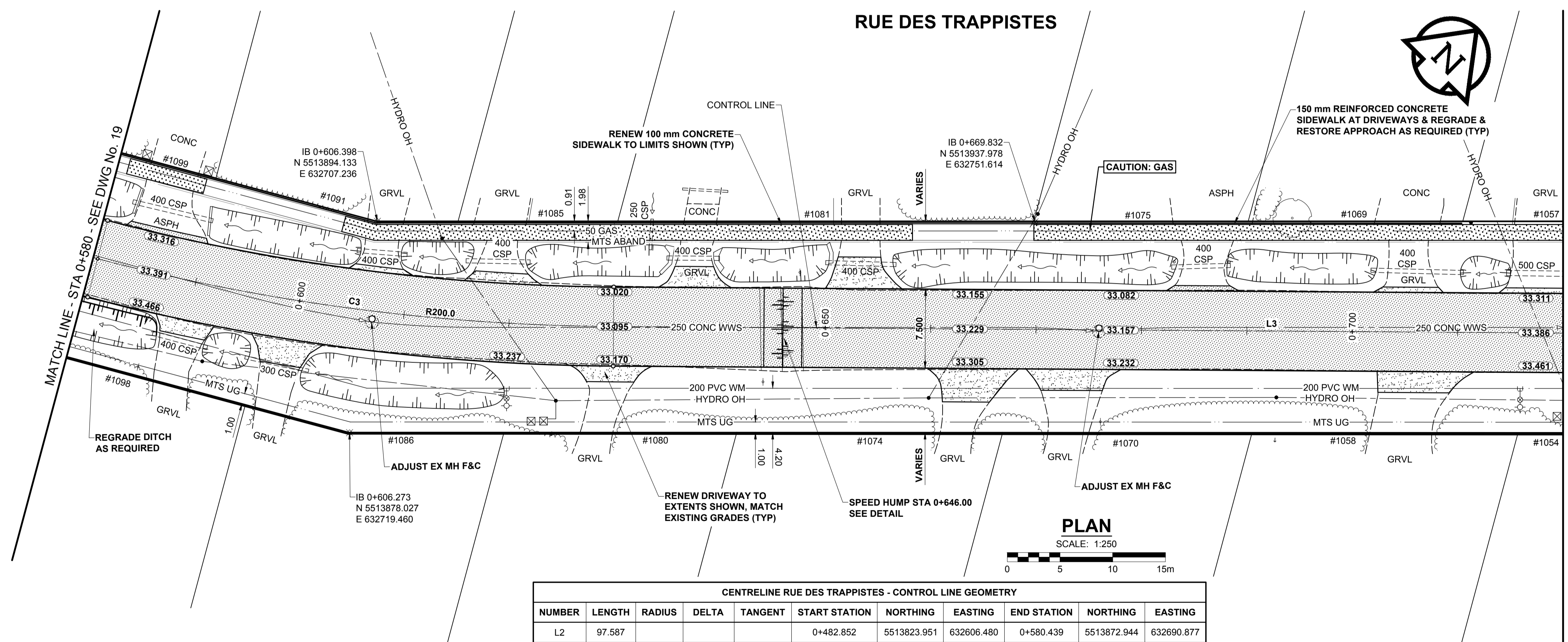


ISC A1 - 594mm x 841mm



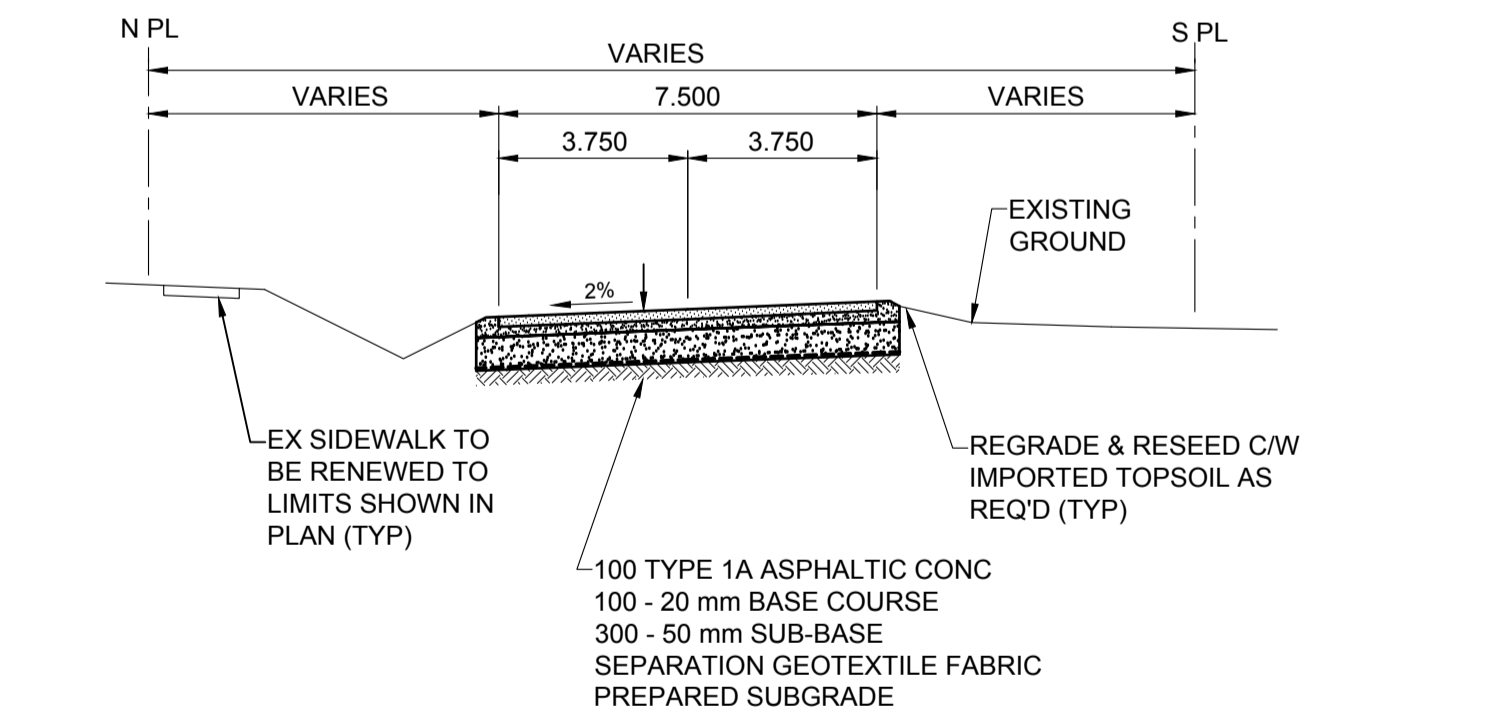
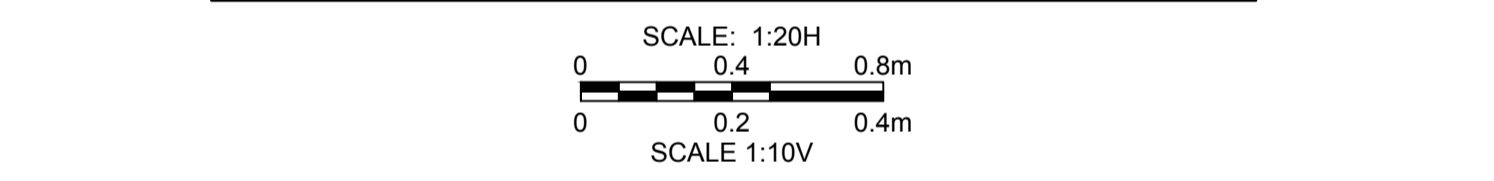
234.40
234.00
233.60
233.20
232.80
232.40

- NOTES**
- ADJUST MH AND CB RIMS TO NEW GRADES.
 - CONTRACTOR TO REGRADE/RENEW EXISTING PRIVATE SIDEWALKS TO LIMITS AS SHOWN. SIDEWALKS TO BE RENEWED WITH CONCRETE UNLESS NOTED OTHERWISE.
 - CONTRACTOR TO TAKE PRECAUTIONARY STEPS TO PROTECT EXISTING TREES WITHIN THE LIMITS OF CONSTRUCTION FROM DAMAGE FROM CONSTRUCTION ACTIVITIES AS OUTLINED IN THE SPECIFICATIONS.
 - MODIFIED BARRIER CURB TO BE CONSTRUCTED AT ALL INTERSECTION RADII, BACK LANE RADII AND BULLNOSES.
 - CONTRACTOR TO CONFIRM THE LOCATION OF ALL UTILITIES/SERVICES IN THE FIELD PRIOR TO CONSTRUCTION.
 - ADD 200.000m TO ABBREVIATED ELEVATIONS TO OBTAIN GEODETIC ELEVATIONS.
 - ALL DIMENSIONS TO BACK OF CURB/EDGE OF ASPHALT.



NOTE:
1. THE SPEED HUMP SHALL HAVE A SEMI-CIRCULAR CROSS-SECTION AS SHOWN.

TYPICAL SPEED HUMP CROSS-SECTION



TYPICAL PAVEMENT SECTION

ASPHALT PAVEMENT STRUCTURE (7.5 m)
SCALE: NTS

CENTRELINE RUE DES TRAPPISTES - CONTROL LINE GEOMETRY

NUMBER	LENGTH	RADIUS	DELTA	TANGENT	START STATION	NORTHING	EASTING	END STATION	NORTHING	EASTING
L2	97.587				0+482.852	5513823.951	632606.480	0+580.439	5513872.944	632690.877
C3	49.477	200.000	14°10'26"	24.865	0+580.439	5513872.944	632690.877	0+629.915	5513902.797	632730.175
L3	124.878				0+629.915	5513902.797	632730.175	0+754.793	5513990.028	632819.535

METRIC
WHOLE NUMBERS INDICATE MILLIMETRES
DECIMALIZED NUMBERS INDICATE METRES

EXISTING	LEGEND - PLAN	NEW	EXISTING	LEGEND - PLAN	NEW	EXISTING	LEGEND - PLAN	NEW
---	GAS	○	MANHOLE	●	CONCRETE PAVEMENT	▨	CONC SIDEWALK/MEDIAN	▨
---	MTS HANDWELL/PEDESTAL	□	CATCH BASIN/CATCH PIT	■	ASPHALT PAVEMENT	▨	PAVING STONE	▨
---	HYDRO HANDWELL/CABINET	△	CURB INLET WITH BOX	▲	GRAVEL	▨	RAMP CURB	▨
---	CATV/FIBRE OPTIC	○	TREE	●	PLANING/REMOVAL	▨		
---	TRAFFIC SIGNALS/PIT	⊕	TEST HOLE	⊕				
---	LAND DRAINAGE SEWER	⊕	PROPERTY LINE	---				
---	SANITARY/COMBINED SEWER	⊕	SURVEY BAR	---				
---	CB LEAD/SSP/DCP	⊕	FENCE	---				
---	WATERMAIN	---	BOC/EDGE OF PAVEMENT	---				
---	SUBDRAIN	---	ELEVATION	(33.333)				
---	DITCH	---	TRAFFIC SIGN	(33.333)				

LOCATION APPROVED UNDERGROUND STRUCTURES

SUPR. U/G STRUCTURES COMMITTEE DATE _____

NOTE:
LOCATION OF UNDERGROUND STRUCTURES AS SHOWN ARE BASED ON THE BEST INFORMATION AVAILABLE BUT NO GUARANTEE IS GIVEN THAT ALL EXISTING UTILITIES ARE SHOWN OR THAT THE GIVEN LOCATIONS ARE EXACT. CONFIRMATION OF EXISTENCE AND EXACT LOCATION OF ALL SERVICES MUST BE OBTAINED FROM THE INDIVIDUAL UTILITIES BEFORE PROCEEDING WITH CONSTRUCTION.

BM 88-029 N. side Rue des Trappistes, @ Rue Du Monastere;
ELEV 231.421 m
Tall. on top of 0.05 m dia. x 2.4 m iron pipe, 23.5 m
W. of W. wall & 22.0 m N. of N. wall of attached garage on N. side of No. 2 Rue Du Monastere.

No.	ISSUED FOR TENDER	17/09/15	GFC
0	REVISIONS	YY/MM/DD	BY

MORRISON HERSHFIELD

DESIGNED BY GFC
DRAWN BY DML
CHECKED BY RPB
APPROVED BY BWB
RELEASED FOR CONSTRUCTION

HOR SCALE 1:250
VERT SCALE 1:10

DATE 17/08/04

PROFESSIONAL'S SEAL
PROVINCE OF MANITOBA
G.F. COOLIDGE
ORIGINAL SIGNED
170915
24465
REGISTERED PROFESSIONAL ENGINEER

CONSULTANT FILE NAME
5160966-PP-04.dwg

THE CITY OF WINNIPEG
PUBLIC WORKS DEPARTMENT
ENGINEERING DIVISION

RUE DES TRAPPISTES AT WESTENDORF COULEE CULVERT REPLACEMENT AND ROAD RECONSTRUCTION
RUE DES TRAPPISTES
HORIZONTAL AND VERTICAL ALIGNMENT
STA 0+580 TO STA 0+720

CITY DRAWING NUMBER N/A
SHEET 20 OF 22
DRAWING No. REV 20 0

BID OPPORTUNITY No. 698-2017