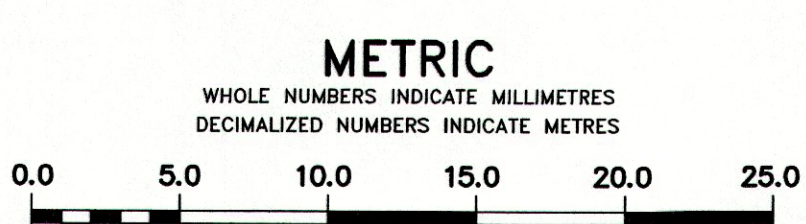
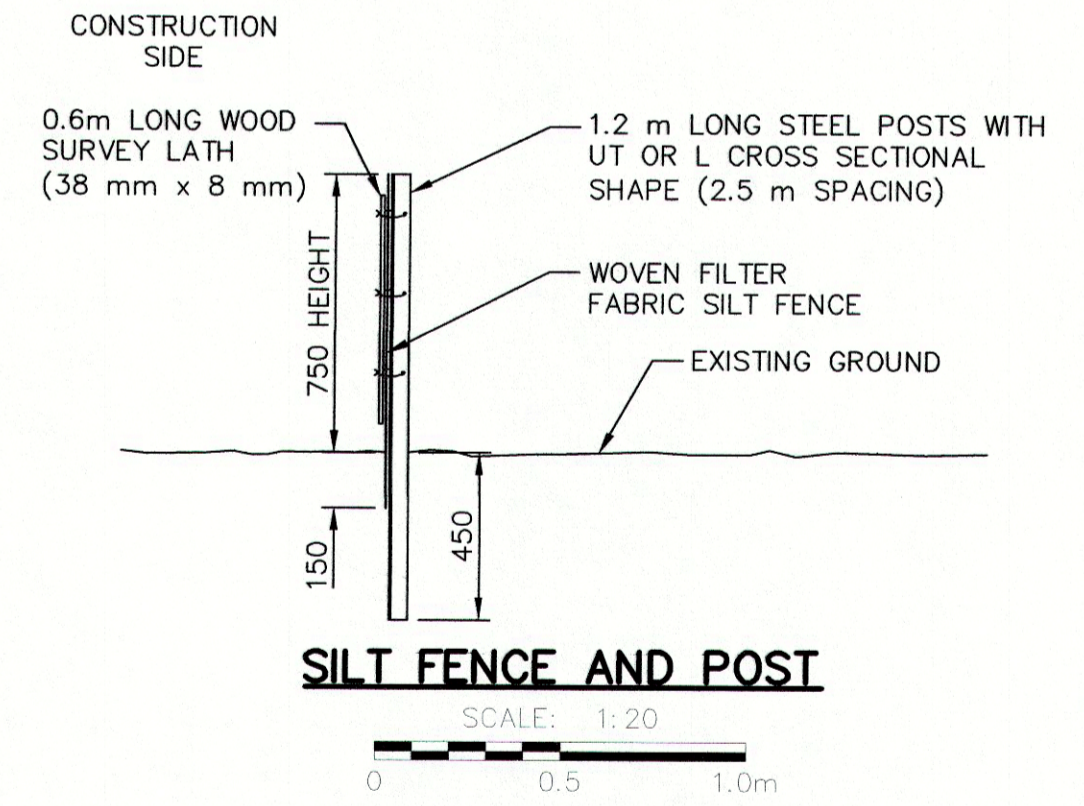
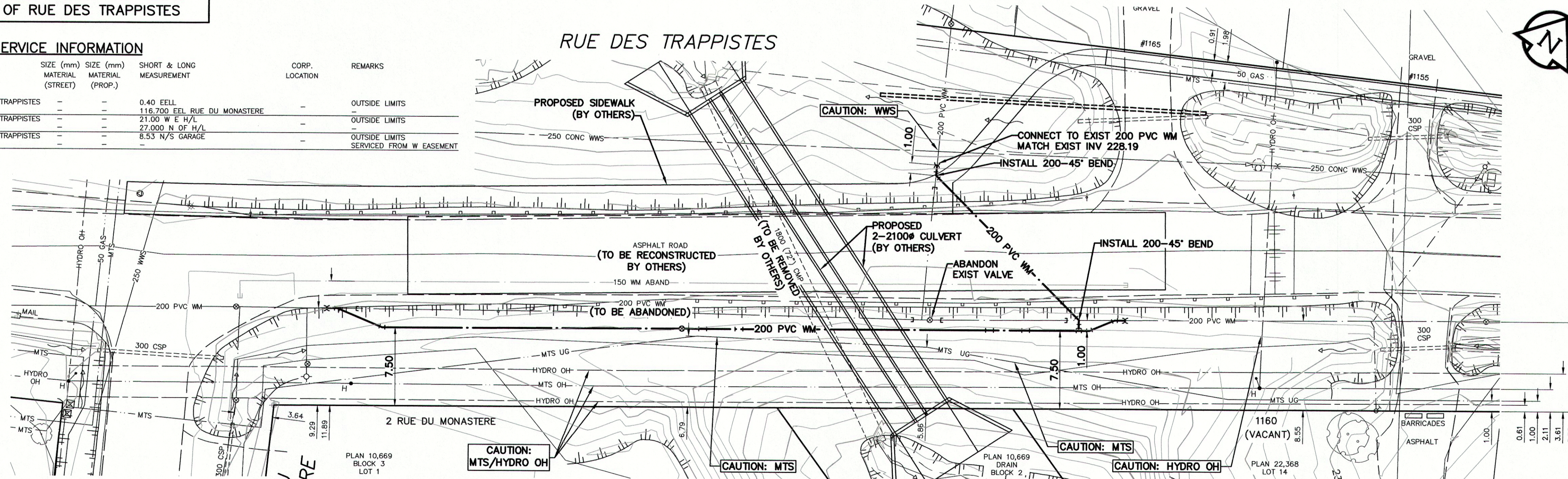


NOTE: CHAINAGES SHOWN ARE ALONG S. P. OF RUE DES TRAPPISTES

**WATER SERVICE INFORMATION**

ADDRESS	SIZE (mm) MATERIAL (STREET)	SIZE (mm) MATERIAL (PROP.)	SHORT & LONG MEASUREMENT	CORP. LOCATION	REMARKS
1155 RUE DES TRAPPISTES RESIDENTIAL	-	-	0.40 EELL	-	OUTSIDE LIMITS
1160 RUE DES TRAPPISTES RESIDENTIAL	-	-	116.700 EEL RUE DU MONASTERE	-	OUTSIDE LIMITS
1165 RUE DES TRAPPISTES RESIDENTIAL	-	-	21.00 W E H/L	-	OUTSIDE LIMITS
1185 RUE DES TRAPPISTES RESIDENTIAL	-	-	27.000 N OF H/L	-	OUTSIDE LIMITS
	-	-	8.53 N/S GARAGE	-	SERVICED FROM W. EASEMENT



**LOCATION APPROVED UNDERGROUND STRUCTURES**

SUPV. U/G STRUCTURES COMMITTEE	DATE

NOTE: LOCATION OF UNDERGROUND STRUCTURES AS SHOWN ARE BASED ON THE BEST INFORMATION AVAILABLE BUT NO GUARANTEE IS GIVEN THAT ALL EXISTING UTILITIES ARE SHOWN OR THAT THE GIVEN LOCATIONS ARE EXACT. CONFIRMATION OF EXISTENCE AND EXACT LOCATION OF ALL SERVICES MUST BE OBTAINED FROM THE INDIVIDUAL UTILITIES BEFORE PROCEEDING WITH CONSTRUCTION.

B.M.	ELEV.	DESCRIPTION
88-029	231.421	N. side Rue des Trappistes, @ Rue Du Monastere; Tilt on top of 0.05 m dia. x 2.4 m iron pipe, 23.5 m W. of W. wall & 22.0 m N. of N. wall of attached garage on N. side of No. 2 Rue Du Monastere.



DESIGNED BY	HAK	CHECKED BY	RPB
DRAWN BY	DML	APPROVED BY	BWB
SCALE: HORIZONTAL	1:250	RELEASED FOR CONSTRUCTION	KAS ZUREK
SCALE: VERTICAL	1:50	DATE	2017 05 17

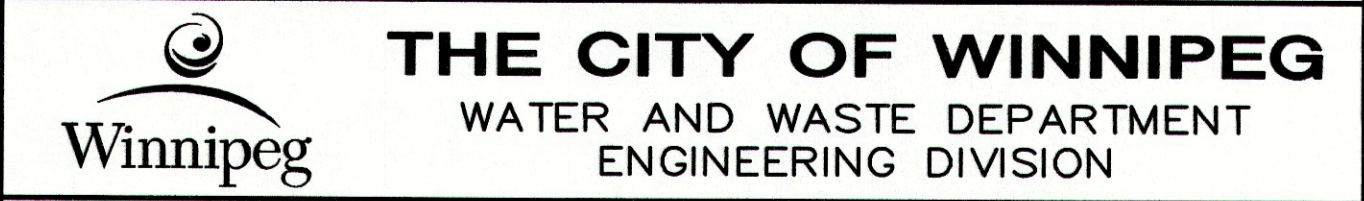


ORIGINAL SIGNED BY H.A. KATZ 2017 05 17

CONSULTANT DRAWING NUMBER

FOR INDEX SEE D-14739

NOTE: ALL VALVES TO BE INSTALLED CLOCKWISE TO CLOSE



RUE DES TRAPPISTES AT WESTENDORF COULEE CULVERT RELOCATION WATER MAIN RELOCATION RUE DU MONASTERE TO 450 m W OF VILLENEUVE BOULEVARD

SHEET 21 of 21 CITY DRAWING NUMBER D-14643