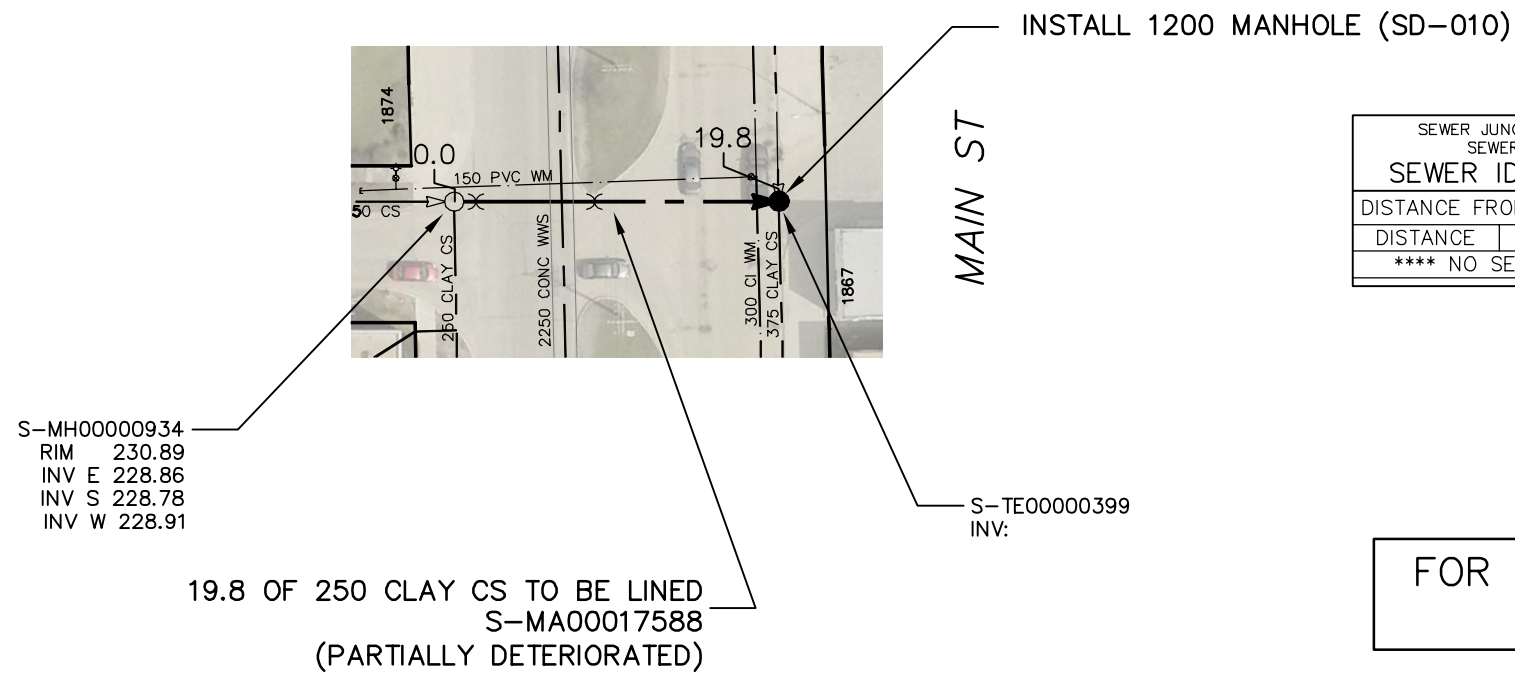
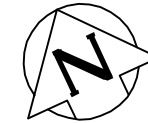
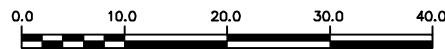


KINGSBURY AVENUE



SEWER JUNCTION INFORMATION FROM SEWER VIDEO INSPECTION		
SEWER ID S-MA00017588		
DISTANCE FROM MH ID S-MH00000934		
DISTANCE	DIAMETER	CLOCK
**** NO SERVICE JUNCTIONS ****		

FOR INDEX SEE
11465



METRIC
WHOLE NUMBERS INDICATE MILLIMETRES
DECIMALIZED NUMBERS INDICATE METRES

LOCATION APPROVED UNDERGROUND STRUCTURES SUPV. U/G STRUCTURES COMMITTEE _____ DATE _____ NOTE: LOCATION OF UNDERGROUND STRUCTURES AS SHOWN ARE BASED ON THE BEST INFORMATION AVAILABLE BUT NO GUARANTEE IS GIVEN THAT ALL EXISTING UTILITIES ARE SHOWN OR THAT THE GIVEN LOCATIONS ARE EXACT. CONFIRMATION OF EXISTENCE AND EXACT LOCATION OF ALL SERVICES MUST BE OBTAINED FROM THE INDIVIDUAL UTILITIES BEFORE PROCEEDING WITH CONSTRUCTION.	B.M. ELEV.				ENGINEER'S SEAL		 THE CITY OF WINNIPEG WATER AND WASTE DEPARTMENT ENGINEERING DIVISION 2016 SEWER MAIN RENEWALS BY CIPP LINING & MANHOLE INSTALLATION KINGSBURY AVENUE MH AT MAIN STREET (W R) TO NODE AT MAIN STREET (E OF Q)	SHEET 39 OF 80 CITY DRAWING NUMBER 11504
	DESIGNED BY	SC	CHECKED BY	SC	ORIGINAL SIGNED BY S.R.J. COURNOYER 17/02/10 CONSULTANT DRAWING NUMBER -			
		DRAWN BY	AD	APPROVED BY	KZ			
		SCALE:	1:750	RELEASED FOR CONSTRUCTION	K. ZURIK			
		HORIZONTAL		DATE	2017 02 15			
		VERTICAL		DATE	2017 02 16			
NO.	REVISIONS	DATE	BY	DATE	2017 02 16			
				PLOT DATE:	2017 02 16			