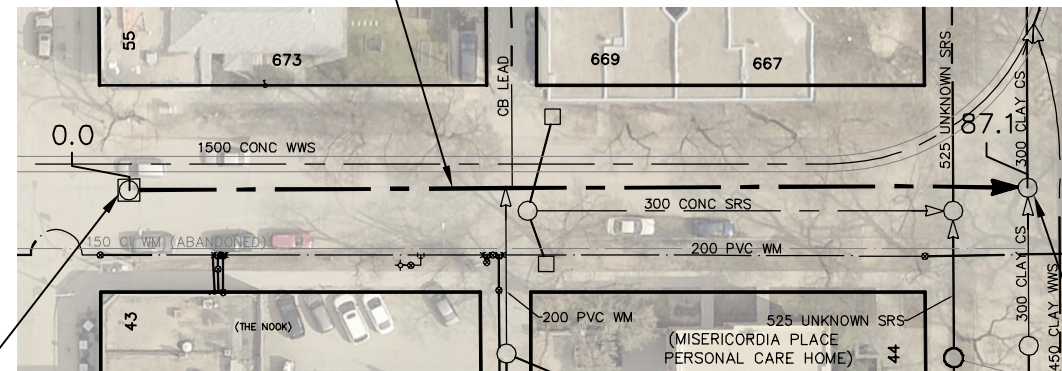


WOLSELEY AVENUE



87.1 OF 300 CLAY CS TO BE LINED
S-MA70013358
(FULLY DETERIORATED)



SEWER JUNCTION INFORMATION FROM SEWER VIDEO INSPECTION		
SEWER ID S-MA70013358		
DISTANCE FROM MH ID S-MH20012383		
DISTANCE	DIAMETER	CLOCK
13.2	150	2
33.2	150	2
35.2	150	3
36.0	150	9
41.5	300	3

S-MH20012383
RIM 232.46
INV E 229.53

SHERBROOK ST

FURBY ST

S-MH70011694
RIM 232.08
INV N 228.86
INV S 228.87
INV W 228.96

FOR INDEX SEE
11466

WARNING

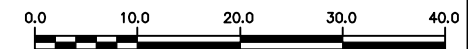
IF POWER EQUIPMENT OR EXPLOSIVES ARE TO BE USED FOR EXCAVATION ON THIS PROJECT THE CONTRACTOR MUST:

- 1) NOTIFY THE GAS COMPANY OF THE PROPOSED LOCATION OF EXCAVATION.
- 2) TAKE PRECAUTION TO AVOID DAMAGE TO GAS COMPANY INSTALLATIONS.

SEE PROVINCIAL REGULATION 210/72 FOR DETAILS

METRIC

WHOLE NUMBERS INDICATE MILLIMETRES
DECIMALIZED NUMBERS INDICATE METRES



LOCATION APPROVED
UNDERGROUND STRUCTURES

B.M.
ELEV.

SUPV. U/G STRUCTURES COMMITTEE DATE

NOTE:

LOCATION OF UNDERGROUND STRUCTURES AS SHOWN ARE BASED ON THE BEST INFORMATION AVAILABLE BUT NO GUARANTEE IS GIVEN THAT ALL EXISTING UTILITIES ARE SHOWN OR THAT THE GIVEN LOCATIONS ARE EXACT. CONFIRMATION OF EXISTENCE AND EXACT LOCATION OF ALL SERVICES MUST BE OBTAINED FROM THE INDIVIDUAL UTILITIES BEFORE PROCEEDING WITH CONSTRUCTION.

NO.	REVISIONS	DATE	BY

DESIGNED BY	SC	CHECKED BY	SC
DRAWN BY	RJ	APPROVED BY	KZ
SCALE:	1:750	RELEASED FOR CONSTRUCTION	K. ZURIK
HORIZONTAL		DATE	2017 02 15
VERTICAL		DATE	2017 02 16

PLOT DATE: 2017 02 16

ENGINEER'S SEAL

ORIGINAL
SIGNED BY
S.R.J.
COURNOYER
17/02/10

CONSULTANT DRAWING NUMBER

BID OPPORTUNITY: 71-2017
CONTRACT NUMBER: 4



THE CITY OF WINNIPEG

WATER AND WASTE DEPARTMENT
ENGINEERING DIVISION

2016 SEWER MAIN RENEWALS
BY CIPP LINING

WOLSELEY AVENUE

MH AT SHERBROOK STREET (WR) TO
MH AT FURBY STREET (ER)

SHEET 79 OF 80

CITY DRAWING NUMBER

11544

FILE PATH: R:\DRAWINGS\SEWER\2016 RENEWALS\Contract 4\Construction Dwg\New folder\corrections\
FILE NAME: 11544.dwg