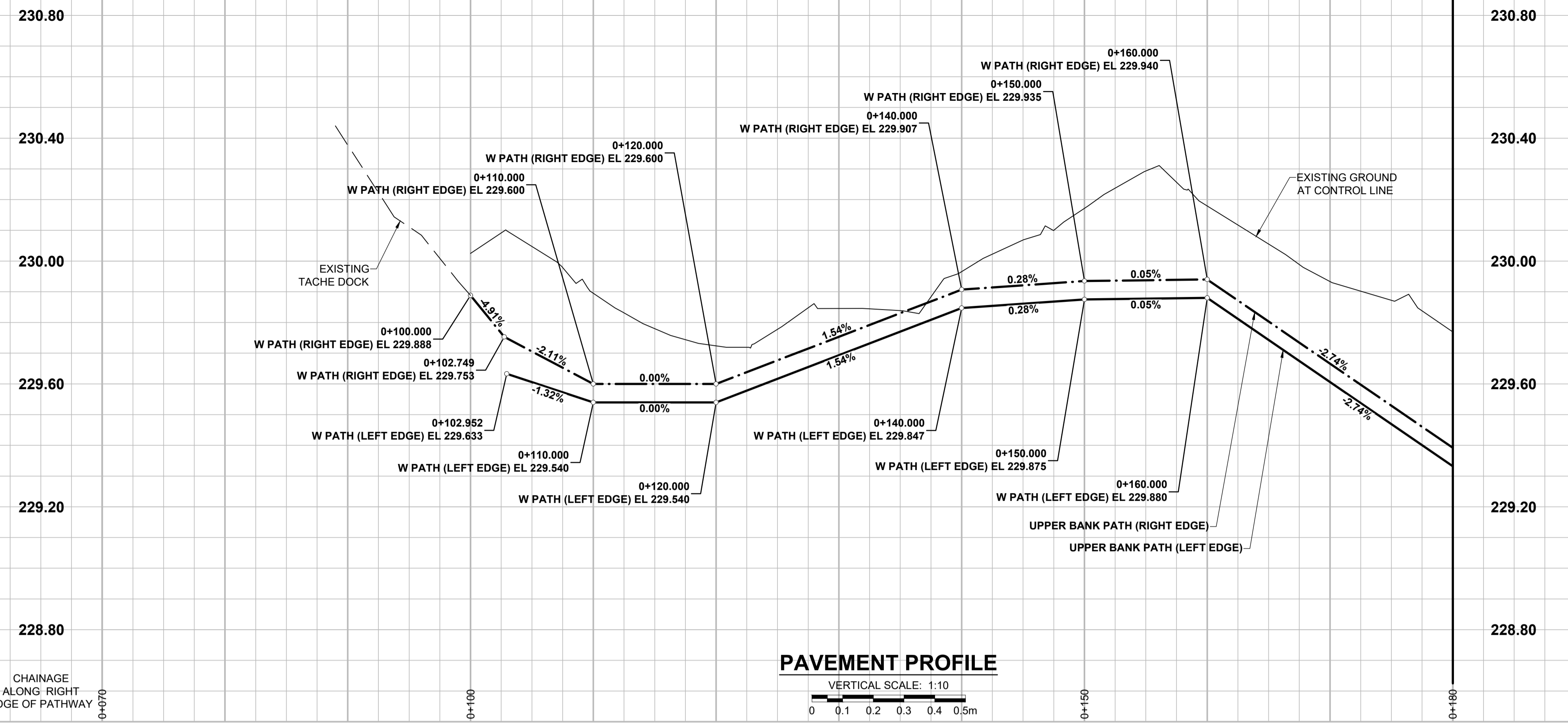


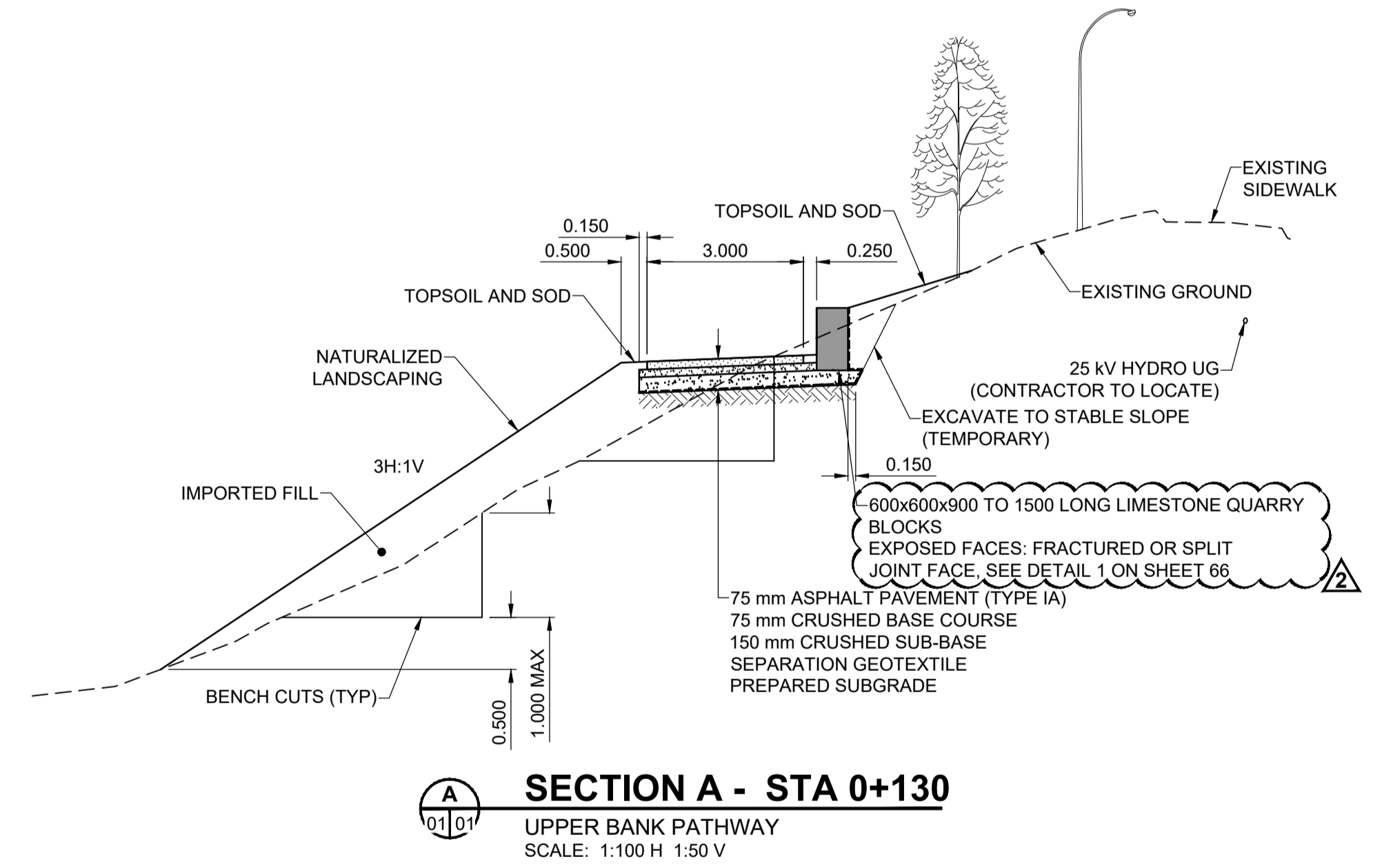
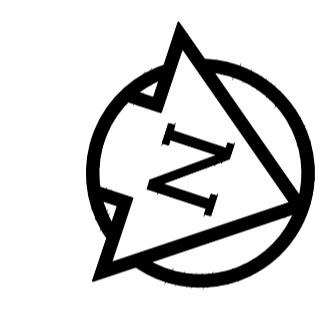
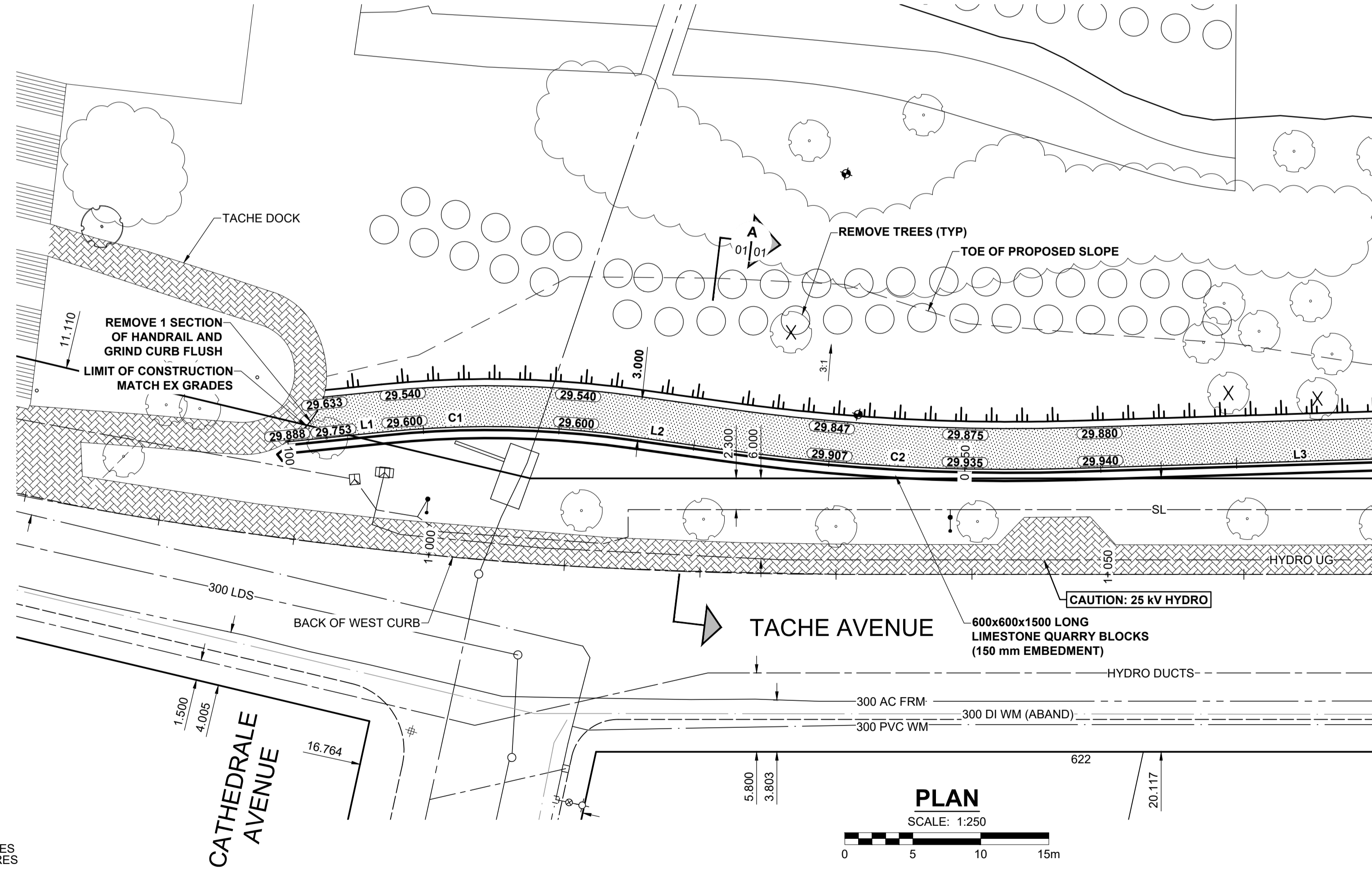
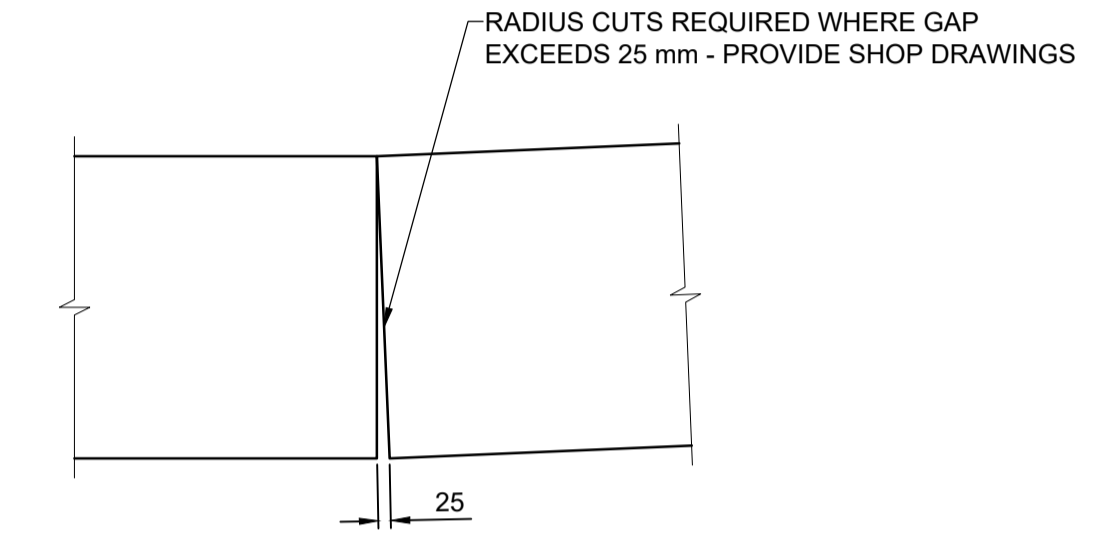
ISC A1 - 584mm x 841mm

CHAINAGE
ALONG RIGHT
EDGE OF PATHWAY

C:\Winnipeg\Projects\517056309_Drawing\05_Design\05_Sheets\Detailed Design\Roadworks\5170563_Tache-PP-01.dwg Last Saved: 11/10/2017 2:54 PM by A.Hayppner Plotted: 11/10/2017 2:59 PM by Alex Hayppner



- NOTES**
- CONTRACTOR TO CONFIRM THE LOCATION OF ALL UTILITIES/SERVICES IN THE FIELD PRIOR TO CONSTRUCTION.
 - MODIFIED BARRIER CURB TO BE CONSTRUCTED AT ALL INTERSECTION RADII, BACK LANE RADII AND BULLNOSES.
 - ADD 200.000 m TO ABBREVIATED ELEVATIONS TO OBTAIN GEODETIC ELEVATIONS.



| NUMBER | LENGTH | RADIUS | DELTA | TANGENT | START STATION | NORTHING | EASTING | END STATION | NORTHING | EASTING |
|--------|--------|---------|-----------|---------|---------------|-----------|----------|-------------|-----------|----------|
| L1 | 7.250 | | | | 0+100.000 | 9984.713 | 9982.642 | 0+107.250 | 9991.331 | 9979.681 |
| C1 | 18.100 | 75.000 | 13°49'40" | 9.094 | 0+107.250 | 9991.331 | 9979.681 | 0+125.350 | 10008.581 | 9974.345 |
| L2 | 6.572 | | | | 0+125.350 | 10008.581 | 9974.345 | 0+131.922 | 10015.047 | 9973.172 |
| C2 | 26.224 | 153.000 | 9°49'13" | 13.144 | 0+131.922 | 10015.047 | 9973.172 | 0+158.146 | 10040.324 | 9966.312 |
| L3 | 53.014 | | | | 0+158.146 | 10040.324 | 9966.312 | 0+211.160 | 10090.111 | 9948.097 |

METRIC
WHOLE NUMBERS INDICATE MILLIMETRES
DECIMALIZED NUMBERS INDICATE METRES

| EXISTING | LEGEND - PLAN | NEW | EXISTING | LEGEND - PLAN | NEW | EXISTING | LEGEND - PLAN | NEW | |
|----------|-------------------------|-----|----------------------|---------------|-------------------|----------|-----------------------|-----|--------------------|
| | GAS | | MANHOLE | | CONCRETE PAVEMENT | | CATCH BASIN/CATCH PIT | | ASPHALT PAVEMENT |
| | HYDRO HANDWELL/PEDESTAL | | TREE | | PAVING STONE | | CURB INLET WITH BOX | | GRAVEL |
| | CATV/FIBRE OPTIC | | TEST HOLE | | RAMP CURB | | SURVEY BAR | | PLANING/REMOVAL |
| | TRAFFIC SIGNALS/PIT | | PROPERTY LINE | | FENCE | | BOC/EDGE OF PAVEMENT | | ELEVATION (33.333) |
| | LAND DRAINAGE SEWER | | FENCE | | TRAFFIC SIGN | | | | |
| | SANITARY/COMBINED SEWER | | BOC/EDGE OF PAVEMENT | | | | | | |
| | CB LEAD/SSP/DCP | | ELEVATION (33.333) | | | | | | |
| | WATERMAIN | | TRAFFIC SIGN | | | | | | |
| | SUBDRAIN | | | | | | | | |
| | DITCH | | | | | | | | |

LOCATION APPROVED
UNDERGROUND STRUCTURES

DATE: _____

NOTE:
LOCATION OF UNDERGROUND STRUCTURES AS SHOWN ARE BASED ON THE BEST INFORMATION AVAILABLE BUT NO GUARANTEE IS GIVEN THAT ALL EXISTING UTILITIES ARE SHOWN OR THAT THE GIVEN LOCATIONS ARE EXACT. CONFIRMATION OF EXISTENCE AND EXACT LOCATION OF ALL SERVICES MUST BE OBTAINED FROM THE INDIVIDUAL UTILITIES BEFORE PROCEEDING WITH CONSTRUCTION.

| NO. | REVISIONS | DATE | BY |
|-----|-----------------------|----------|-----|
| 2 | ISSUED FOR ADDENDUM 2 | 17/11/08 | JGK |
| 1 | ISSUED FOR ADDENDUM 1 | 17/10/27 | JGK |
| 0 | ISSUED FOR TENDER | 17/10/13 | JGK |

MORRISON HERSHFIELD

DESIGNED BY: JGK
CHECKED BY: DAN

DRAWN BY: KMB
APPROVED BY: BWB

RELEASED FOR CONSTRUCTION

DATE: 17/10/13

PROFESSIONAL'S SEAL

PROVINCE OF MANITOBA

J.G. KENNEDY
Member
22326

CONSULTANT FILE NAME
5170563-Tache-PP-01.dwg

THE CITY OF WINNIPEG
PUBLIC WORKS DEPARTMENT
ENGINEERING DIVISION

TACHE PROMENADE

TACHE AVENUE
UPPER BANK PATHWAY
PLAN PROFILE & SECTIONS
STA 0+070 TO STA 0+180

CITY DRAWING NUMBER: B250-17-15
SHEET 15 OF 70
DRAWING No. REV 01 2

ENGINEERS GOSCIENTISTS MANITOBA
Certificate of Authorization
MORRISON HERSHFIELD
No. 1736

BID OPPORTUNITY No. 754-2017