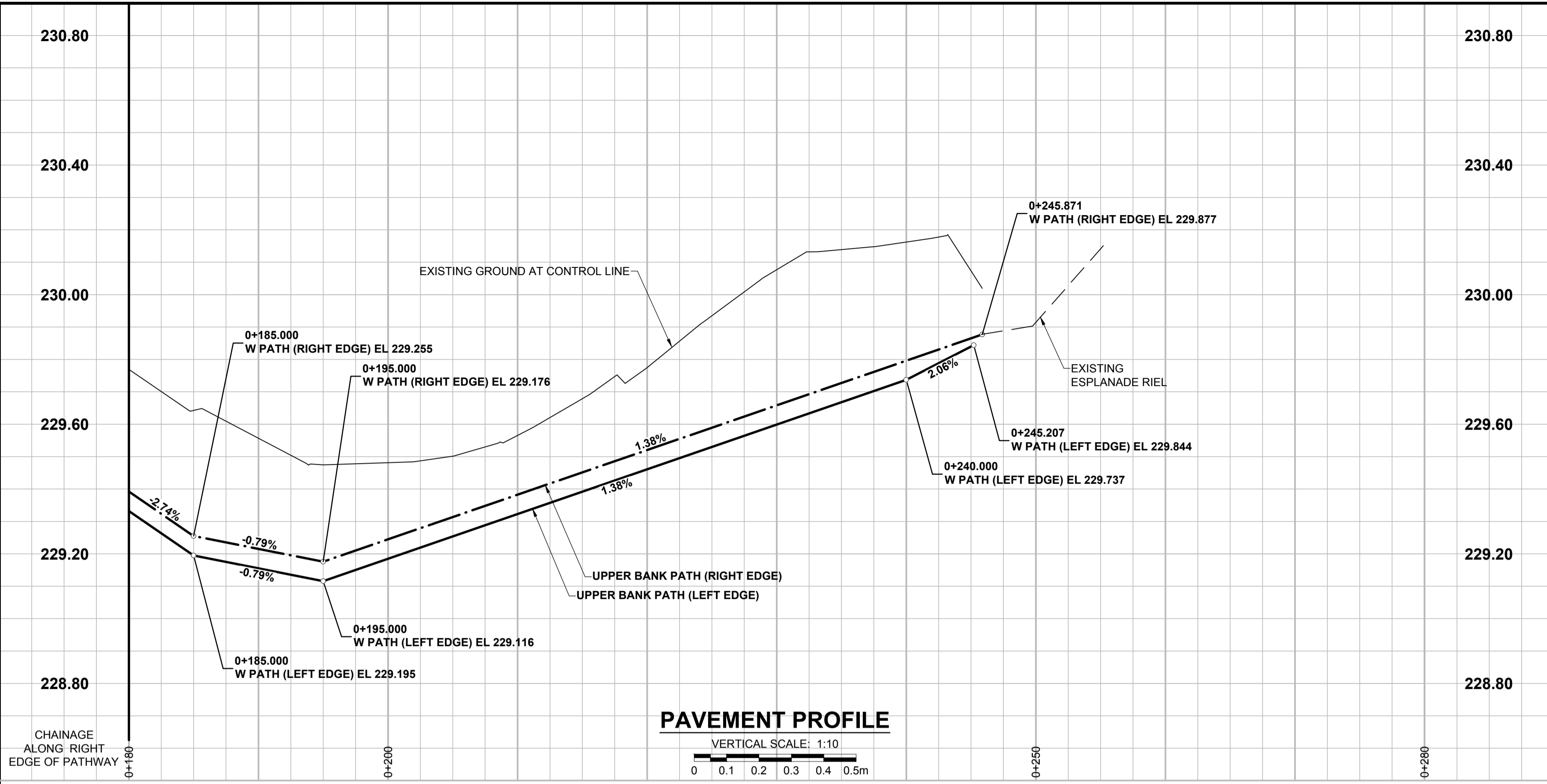
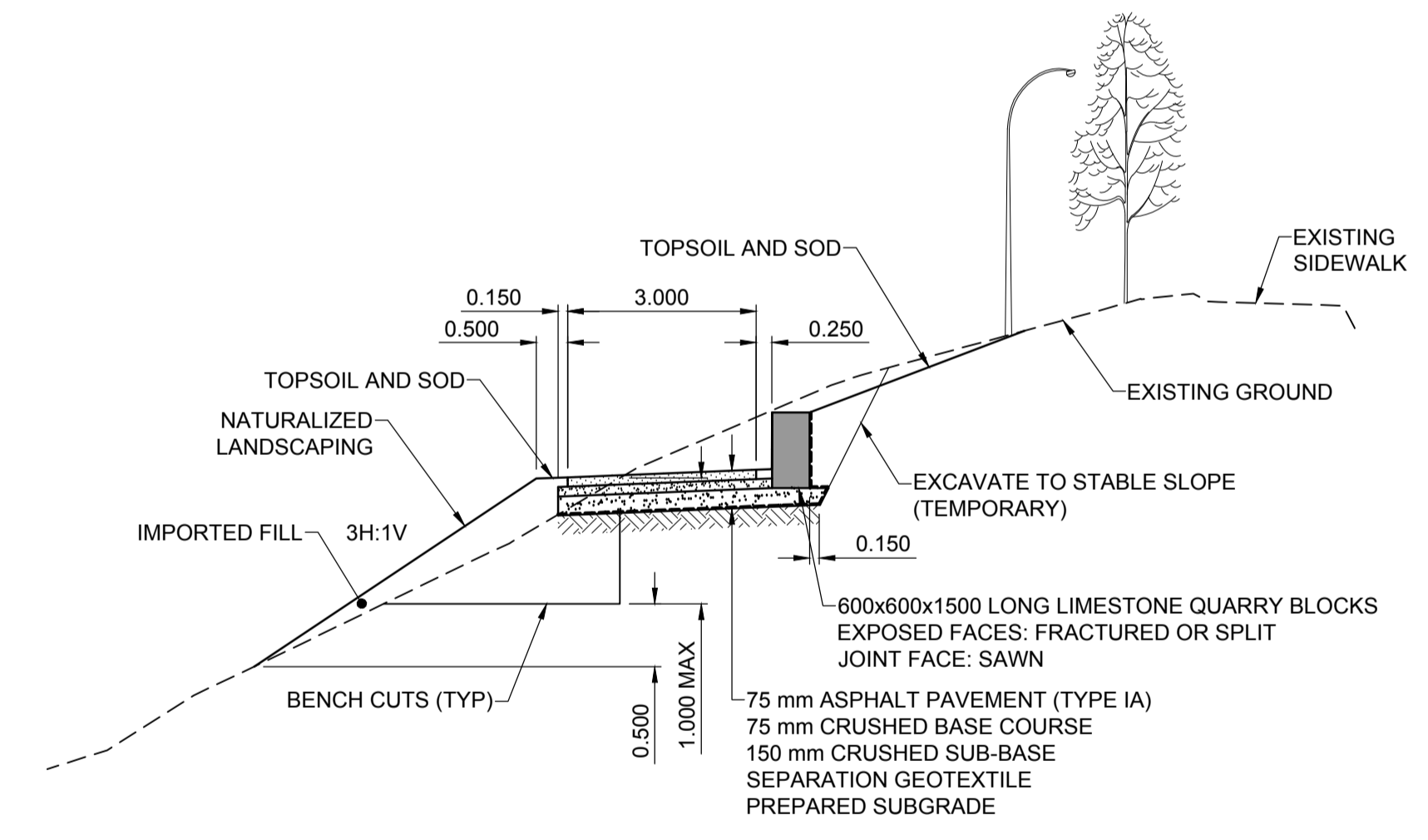
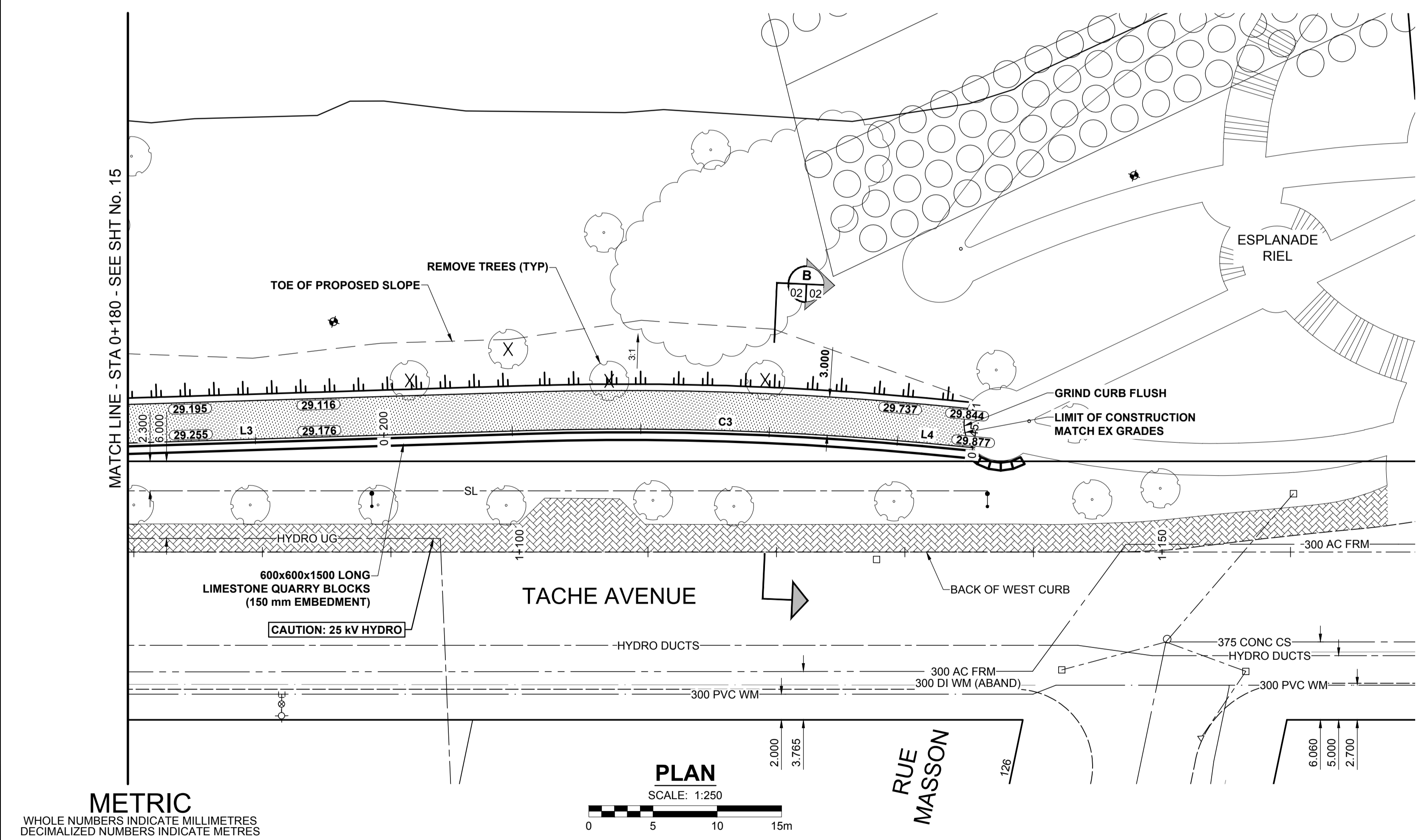
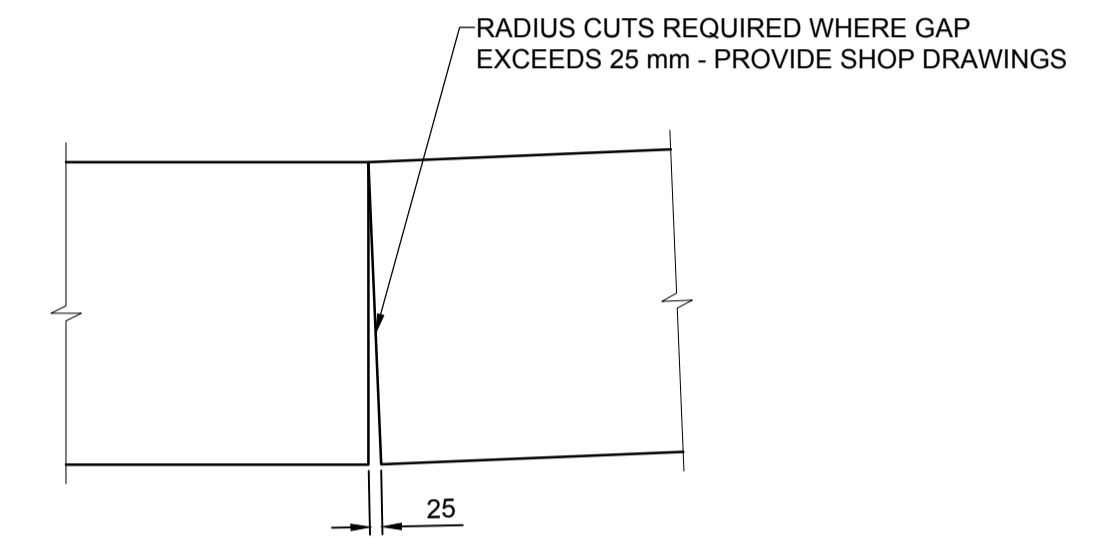


ISC A1 - 594mm x 841mm

C:\Winnipeg\Projects\51765509_09_Drawing\05_Design\05_Sheets\Detailed Design\Roadworks\51765509_Tache_PP-02.dwg
 Last Saved: 10/12/2017 8:43 PM by: lbevard
 Plotted: 10/13/2017 9:44 AM by: Kevin Bernard



- NOTES**
- CONTRACTOR TO CONFIRM THE LOCATION OF ALL UTILITIES/SERVICES IN THE FIELD PRIOR TO CONSTRUCTION.
 - MODIFIED BARRIER CURB TO BE CONSTRUCTED AT ALL INTERSECTION RADII, BACK LANE RADII AND BULLNOSES.
 - ADD 200.000 m TO ABBREVIATED ELEVATIONS TO OBTAIN GEODETIC ELEVATIONS.



UPPER BANK PATHWAY ALIGNMENT

NUMBER	LENGTH	RADIUS	DELTA	TANGENT	START STATION	NORTHING	EASTING	END STATION	NORTHING	EASTING
L3	53.014				0+158.146	10040.324	9966.312	0+211.160	10090.111	9948.097
C3	30.813	247.000	7°08'51"	15.427	0+211.160	10090.111	9948.097	0+241.973	10119.633	9939.340
L4	3.899				0+241.973	10119.633	9939.340	0+245.871	10123.432	9938.466

METRIC
 WHOLE NUMBERS INDICATE MILLIMETRES
 DECIMALIZED NUMBERS INDICATE METRES

EXISTING	LEGEND - PLAN	NEW	EXISTING	LEGEND - PLAN	NEW	EXISTING	LEGEND - PLAN	NEW
---	GAS	---	○	MANHOLE	●	---	CONCRETE PAVEMENT	---
---	MTS HANDWELL/PEDESTAL	---	□	CATCH BASIN/CATCH PIT	■	---	CONC SIDEWALK/MEDIAN	---
---	HYDRO HANDWELL/CABINET	---	△	CURB INLET WITH BOX	▲	---	ASPHALT PAVEMENT	---
---	CATV/FIBRE OPTIC	---	○	TREE	○	---	PAVING STONE	---
---	TRAFFIC SIGNALS/PIT	---	⊕	TEST HOLE	⊕	---	GRAVEL	---
---	LAND DRAINAGE SEWER	---	TH-12	PROPERTY LINE	---	---	RAMP CURB	---
---	SANITARY/COMBINED SEWER	---	⊕	SURVEY BAR	---	---	PLANING/REMOVAL	---
---	CB LEAD/SSP/DCP	---	---	FENCE	---	---		---
---	WATERMAIN	---	---	BOC/EDGE OF PAVEMENT	---	---		---
---	SUBDRAIN	---	33.000	ELEVATION	(33.333)	---		---
---	DITCH	---	---	TRAFFIC SIGN	---	---		---

LOCATION APPROVED
 UNDERGROUND STRUCTURES
 SUPR. U/G STRUCTURES COMMITTEE DATE
NOTE:
 LOCATION OF UNDERGROUND STRUCTURES AS SHOWN ARE BASED ON THE BEST INFORMATION AVAILABLE BUT NO GUARANTEE IS GIVEN THAT ALL EXISTING UTILITIES ARE SHOWN OR THAT THE GIVEN LOCATIONS ARE EXACT. CONFIRMATION OF EXISTENCE AND EXACT LOCATION OF ALL SERVICES MUST BE OBTAINED FROM THE INDIVIDUAL UTILITIES BEFORE PROCEEDING WITH CONSTRUCTION.

NO.	ISSUED FOR TENDER	DATE	BY
0	ISSUED FOR TENDER	17/10/13	JGK
	REVISIONS	YY/MM/DD	BY

MORRISON HERSHFIELD

DESIGNED BY: JGK
 CHECKED BY: DAN
 DRAWN BY: KMB
 APPROVED BY: BWB
 RELEASED FOR CONSTRUCTION
 DATE: 17/10/13

PROFESSIONAL'S SEAL
 PROVINCE OF MANITOBA
J.G. KENNEDY
 Member
 22326
 REGISTERED PROFESSIONAL ENGINEER

THE CITY OF WINNIPEG
 PUBLIC WORKS DEPARTMENT
 ENGINEERING DIVISION

TACHE PROMENADE

TACHE AVENUE
 UPPER BANK PATHWAY
 PLAN PROFILE & SECTIONS
 STA 0+180 TO STA 0+280

CITY DRAWING NUMBER: B250-17-16
 SHEET 16 OF 70
 DRAWING No. REV 02 0

ENGINEERS GEOSCIENTISTS MANITOBA
 Certificate of Authorization
 MORRISON HERSHFIELD
 No. 1736
 BID OPPORTUNITY No. 754-2017