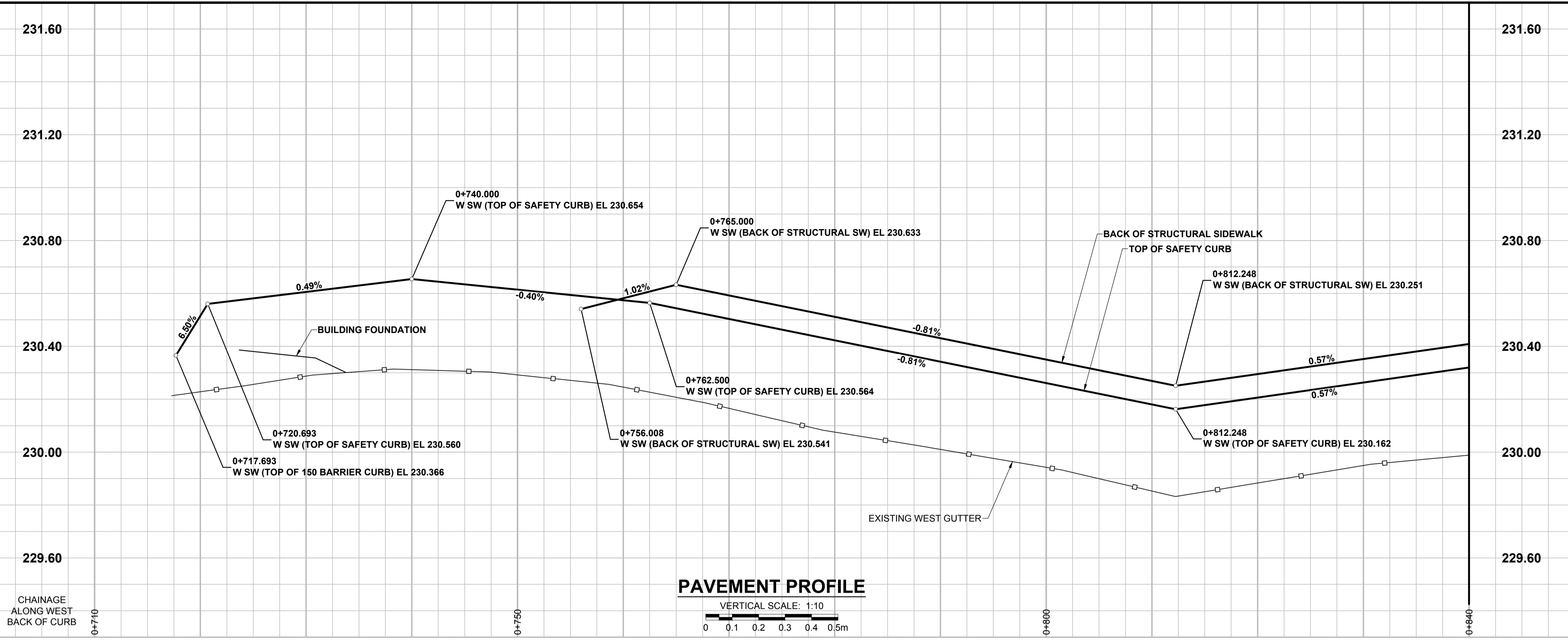
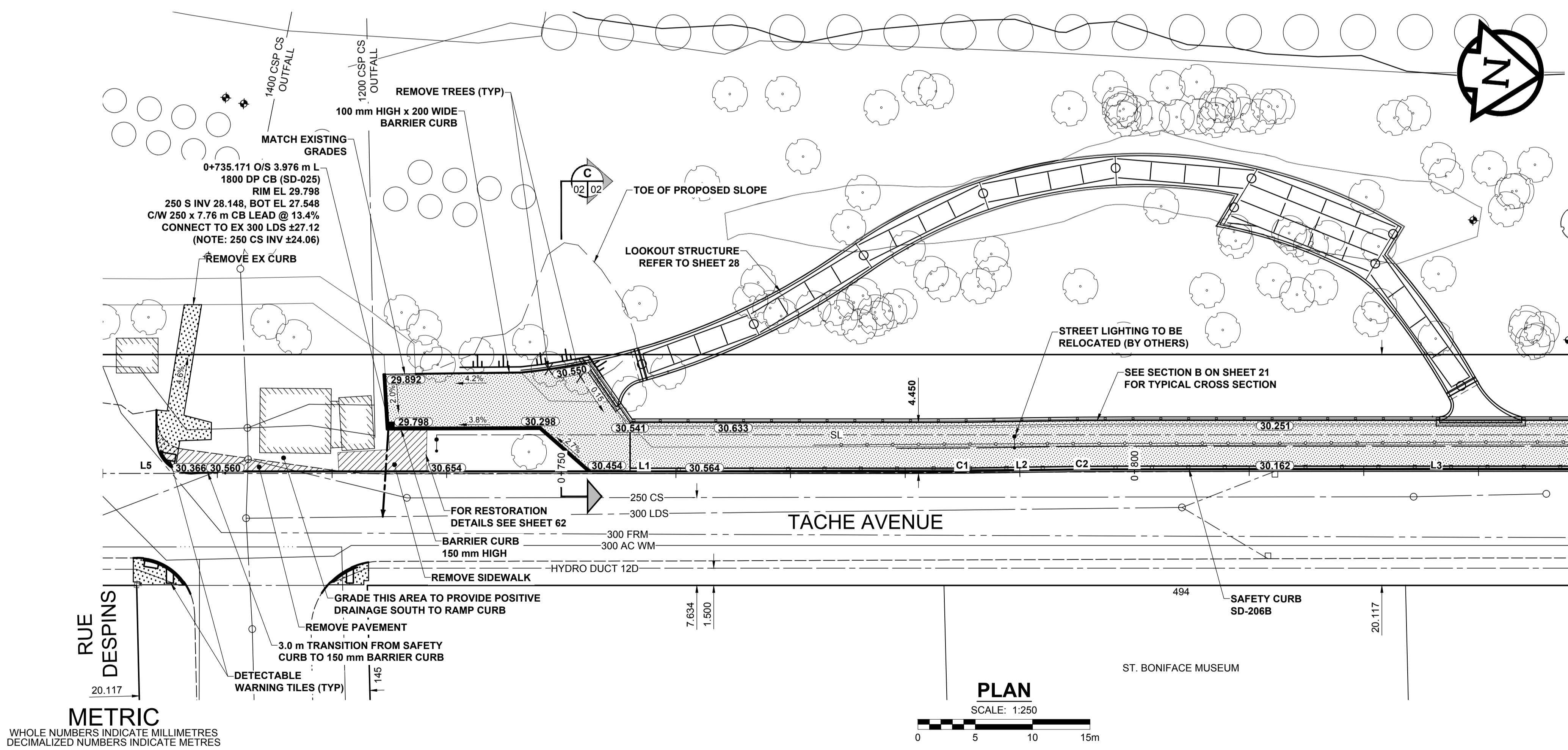


ISC A1 - 584mm x 841mm

C:\Winnipeg\Projects\Design\Roadworks\1705653_Tache_PP-03.dwg
 Last Saved: 10/12/2017 9:00 PM by kbeard
 Plotter: 10/12/2017 10:03 AM by Kevin Beard

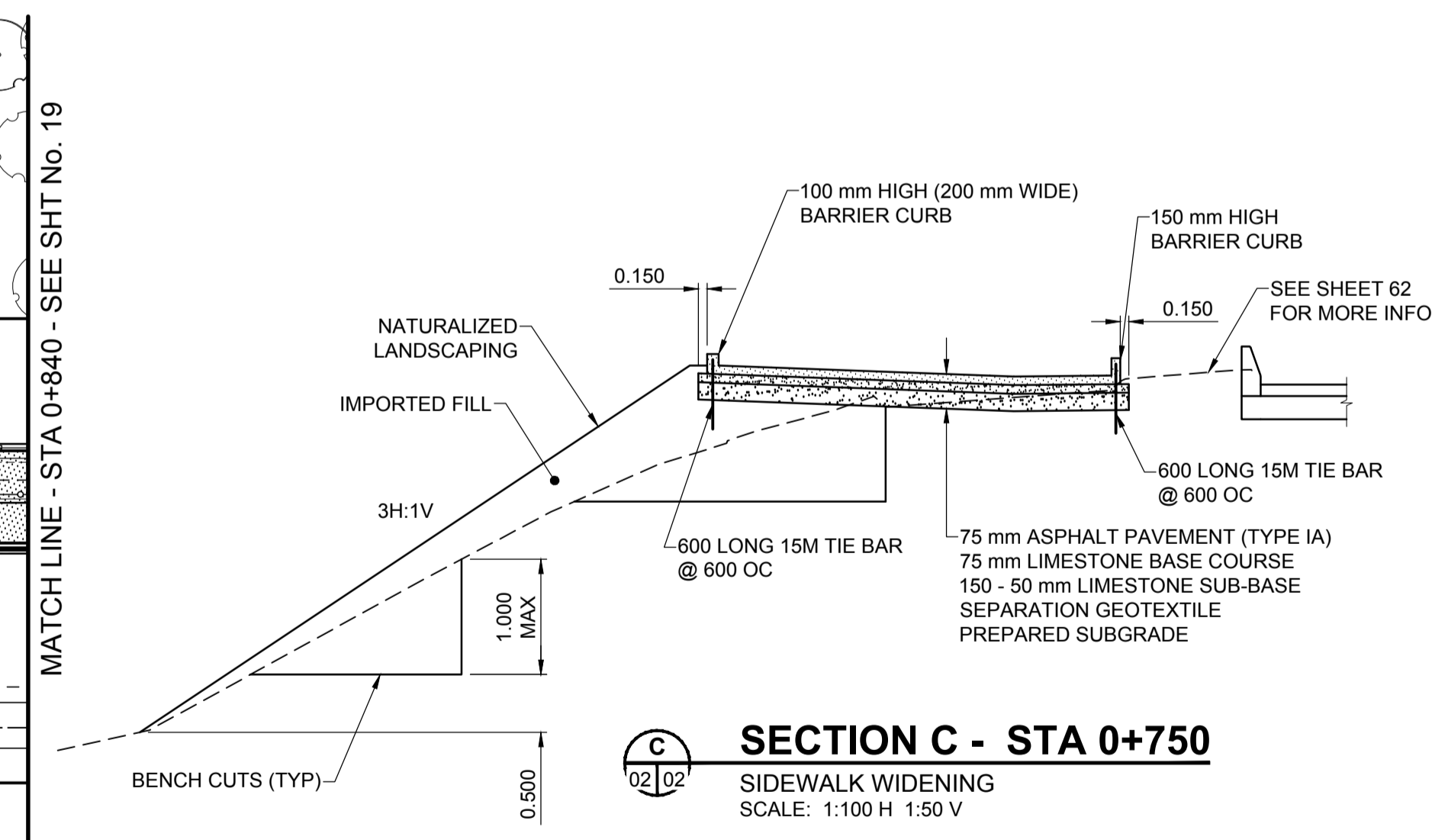


- NOTES**
- CONTRACTOR TO CONFIRM THE LOCATION OF ALL UTILITIES/SERVICES IN THE FIELD PRIOR TO CONSTRUCTION.
 - MODIFIED BARRIER CURB TO BE CONSTRUCTED AT ALL INTERSECTION RADII, BACK LANE RADII AND BULLNOSES.
 - ADD 200.000 m TO ABBREVIATED ELEVATIONS TO OBTAIN GEODETIC ELEVATIONS.



WEST BACK OF CURB ALIGNMENT

NUMBER	LENGTH	RADIUS	DELTA	TANGENT	START STATION	NORTHING	EASTING	END STATION	NORTHING	EASTING
L5	31.447				0+702.402	9701.065	10015.977	0+733.848	9732.395	10013.276
L1	46.731				0+733.848	9732.395	10013.276	0+780.579	9778.953	10009.263
C1	8.727	500.000	1°00'00"	4.363	0+780.579	9778.953	10009.263	0+789.306	9787.641	10008.438
L2	1.747				0+789.306	9787.641	10008.438	0+791.053	9789.379	10008.257
C2	8.727	500.000	1°00'00"	4.363	0+791.053	9789.379	10008.257	0+799.780	9798.066	10007.432
L3	156.838				0+799.780	9798.066	10007.432	0+956.617	9954.324	9993.963



METRIC
 WHOLE NUMBERS INDICATE MILLIMETRES
 DECIMALIZED NUMBERS INDICATE METRES

EXISTING	LEGEND - PLAN	NEW	EXISTING	LEGEND - PLAN	NEW	EXISTING	LEGEND - PLAN	NEW
---	GAS	---	○	MANHOLE	●	---	CONCRETE PAVEMENT	---
---	MTS HANDWELL/PEDESTAL	---	□	CATCH BASIN/CATCH PIT	■	---	CONC SIDEWALK/MEDIAN	---
---	HYDRO HANDWELL/CABINET	---	△	CURB INLET WITH BOX	▲	---	ASPHALT PAVEMENT	---
---	CATV/FIBRE OPTIC	---	○	TREE	○	---	PAVING STONE	---
---	TRAFFIC SIGNALS/PIT	---	⊕	TEST HOLE	⊕	---	GRAVEL	---
---	LAND DRAINAGE SEWER	---	TH-12	PROPERTY LINE	---	---	RAMP CURB	---
---	SANITARY/COMBINED SEWER	---	+	SURVEY BAR	---	---	PLANING/REMOVAL	---
---	CB LEAD/SSP/DCP	---	---	FENCE	---	---		---
---	WATERMAIN	---	---	BOC/EDGE OF PAVEMENT	---	---		---
---	SUBDRAIN	---	33.000	ELEVATION	(33.333)	---		---
---	DITCH	---	---	TRAFFIC SIGN	---	---		---

LOCATION APPROVED
 UNDERGROUND STRUCTURES

SUPR. UG STRUCTURES COMMITTEE DATE

NOTE:
 LOCATION OF UNDERGROUND STRUCTURES AS SHOWN ARE BASED ON THE BEST INFORMATION AVAILABLE BUT NO GUARANTEE IS GIVEN THAT ALL EXISTING UTILITIES ARE SHOWN OR THAT THE GIVEN LOCATIONS ARE EXACT. CONFIRMATION OF EXISTENCE AND EXACT LOCATION OF ALL SERVICES MUST BE OBTAINED FROM THE INDIVIDUAL UTILITIES BEFORE PROCEEDING WITH CONSTRUCTION.

NO.	ISSUED FOR TENDER	DATE	BY
0	ISSUED FOR TENDER	17/10/13	JGK
	REVISIONS	YY/MM/DD	BY

MORRISON HERSHFIELD

DESIGNED BY: JGK
 CHECKED BY: DAN
 DRAWN BY: KMB
 APPROVED BY: BWB

DATE: 17/10/13

PROFESSIONAL'S SEAL
 PROVINCE OF MANITOBA
J.G. KENNEDY
 Member
 22326
 REGISTERED PROFESSIONAL ENGINEER

CONSULTANT FILE NAME
 5170563-Tache-PP-03.dwg

THE CITY OF WINNIPEG
 PUBLIC WORKS DEPARTMENT
 ENGINEERING DIVISION

TACHE PROMENADE

TACHE AVENUE
 SIDEWALK WIDENING
 PLAN PROFILE & SECTIONS
 RUE DESPINS TO STA 0+840

CITY DRAWING NUMBER: B250-17-18
 SHEET 18 OF 70
 DRAWING No. REV 02 0

BID OPPORTUNITY No. 754-2017