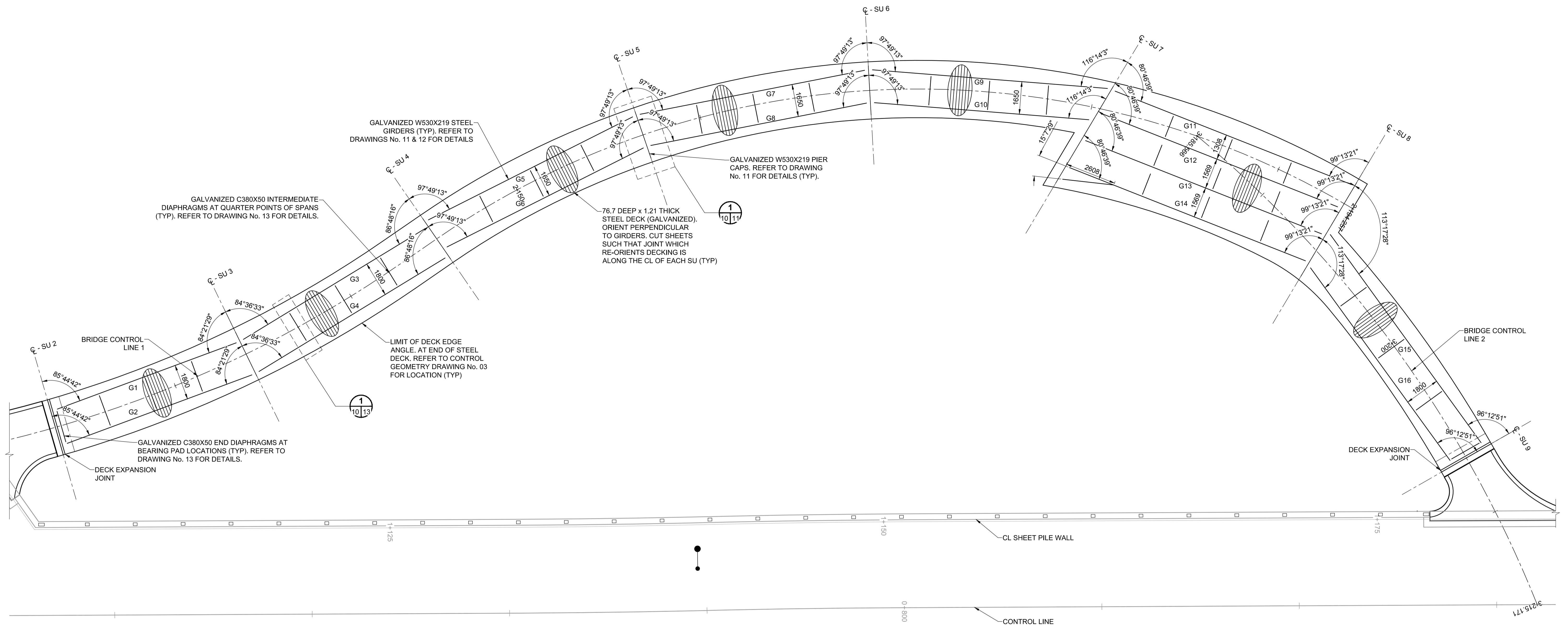


ISO A1 - 594mm x 841mm  
 O:\Winnipeg\Proj\517065309 - Drawing\05 - Design\05 - Sheets\Detailed Design\Treetop Lookout Structure\170953 - DD10 - Framg - PL.dwg  
 Last Saved: 10/13/2017 2:05 PM by A.Hegpner  
 Plotted: 10/13/2017 2:05 PM by Alex Hegpner



PIER BEAM LAYOUT										
LOCATION										
SU3	CONNECTING MEMBER	G1	G2	G3	G4	PILE				
	LENGTH X (MM)	-710	+1100	-710	+1100	+195				
SU4	CONNECTING MEMBER	G3	G4	G5	G6	PILE				
	LENGTH X (MM)	-751	+606	-1060	+1052	-38				
SU5	CONNECTING MEMBER	G5	G6	G7	G8	PILE				
	LENGTH X (MM)	-1060	+606	-1060	+606	-227				
SU6	CONNECTING MEMBER	G7	G8	G9	G10	PILE				
	LENGTH X (MM)	-1060	+606	-1060	+606	-227				
SU7	CONNECTING MEMBER	G9	G10	G11	G12	G13	G14	COPED	PILE W	PILE E
	LENGTH X (MM)	-1171	+669	-1121	+204	+1794	+3383	+4141	-355	+2588
SU8	CONNECTING MEMBER	G11	G12	G13	G14	G15	G16	PILE W	PILE E	
	LENGTH X (MM)	-1047	+279	+1868	+3458	+1621	+3580	-384	+2632	

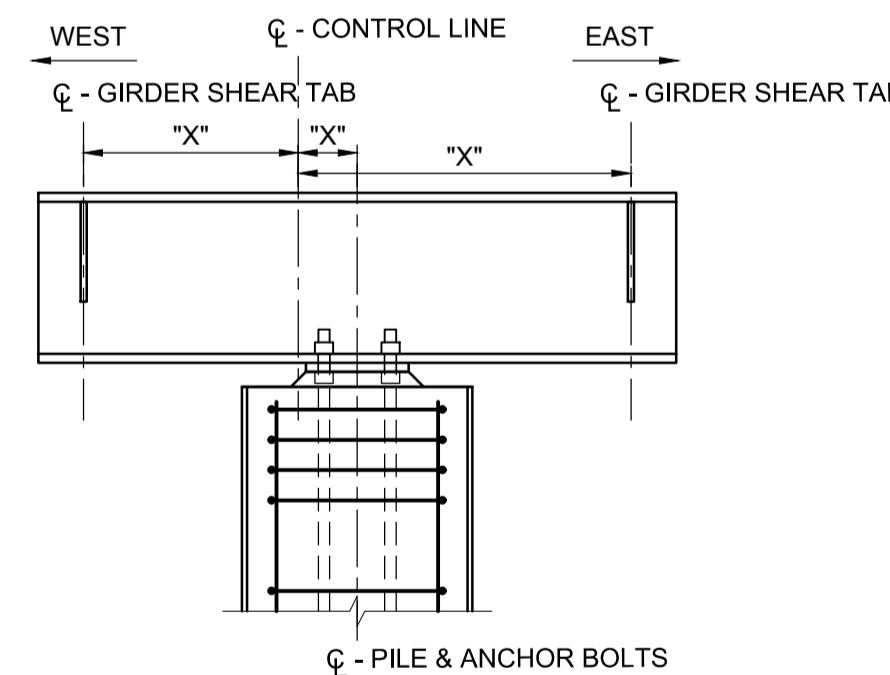
**STAGING NOTES:**  
 BRIDGE SUPERSTRUCTURE SU2 - SU9

1. INSTALL PIER BEAMS AND SECURE WITH ANCHOR BOLTS
2. INSTALL GIRDERS AS SHOWN (SHOP FABRICATE GIRDERS COMPLETE WITH SHEAR CONNECTOR STUDS AND HOT DIP GALVANIZE AS A UNIT)
3. INSTALL INTERMEDIATE DIAPHRAGMS
4. INSTALL GALVANIZED STEEL DECKING AND GALVANIZED EDGE ANGLES (STEEL DECKING IS PREPARED WITH HOLES TO FIT SHEAR CONNECTORS AS SHOWN ON DRAWING No. 12. CONNECT STEEL DECKING TO GIRDERS AND EDGE ANGLE TO DECKING USING HILTI SCREWS AS SHOWN ON DRAWING No. 12)
5. PLACE DECK DRAINS
6. PLACE DECK AND CURB REINFORCEMENT
7. POUR DECK CONCRETE CONTINUOUSLY FROM ONE END OF THE STRUCTURE TO THE OTHER. CURE.
8. POUR CURBS. CURE.
9. INSTALL DECK EXPANSION JOINTS AND ASSOCIATED HARDWARE
10. INSTALL WATERPROOFING MEMBRANE
11. INSTALL SAND LEVELING COURSE
12. INSTALL PRECAST CONCRETE PAVERS
13. INSTALL RAIL POSTS AND BENCHES
14. INSTALL TOP RAIL
15. INSTALL EXPANDED STEEL MESH AND CABLES



**METRIC**  
 WHOLE NUMBERS INDICATE MILLIMETRES  
 DECIMALIZED NUMBERS INDICATE METRES

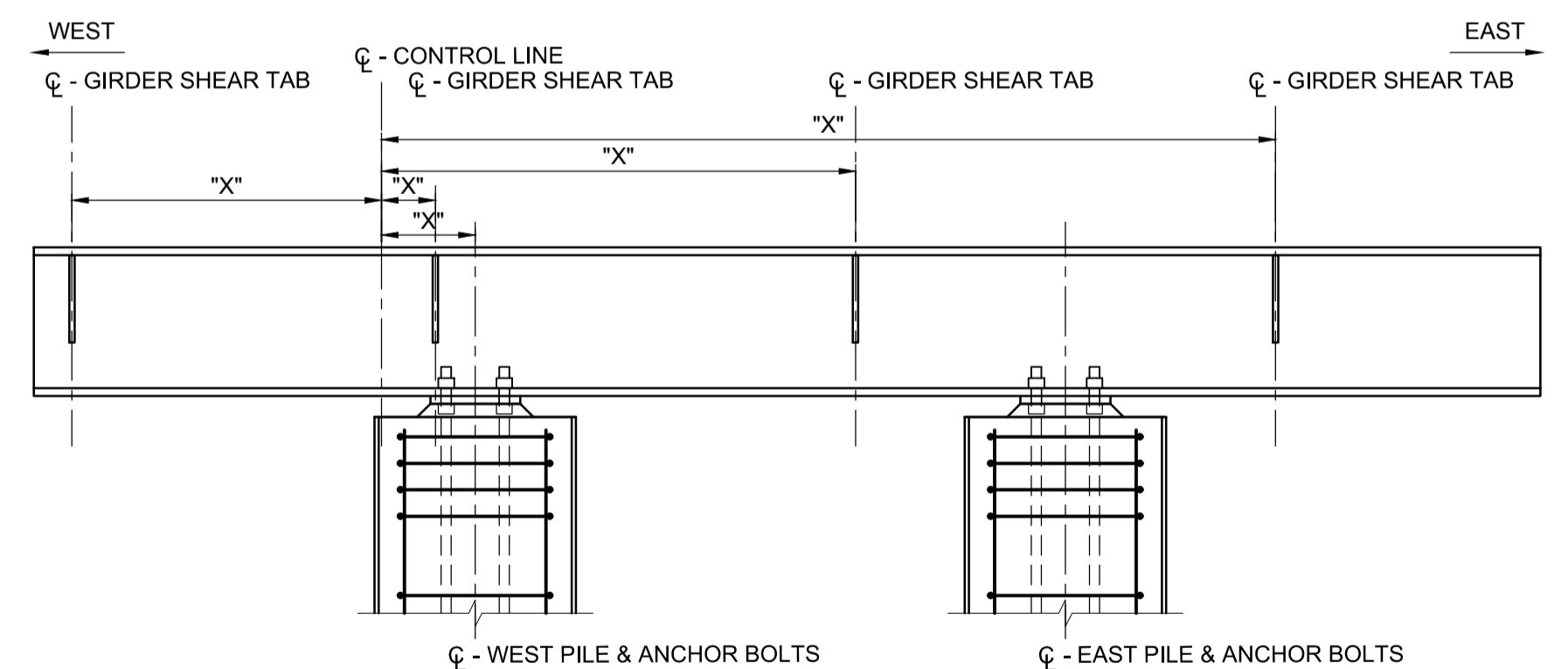
**FRAMING PLAN**  
 SCALE: 1:100



NOTE: REFER TO TABLE FOR LENGTHS.  
 "+-" DENOTES OFFSET TO THE EAST.  
 "-" DENOTES OFFSET TO THE WEST.

**TYPICAL PIER BEAM CONNECTIONS SU3 THROUGH SU6**

SCALE: 1:25



NOTE: REFER TO TABLE FOR LENGTHS.  
 "+-" DENOTES OFFSET TO THE EAST.  
 "-" DENOTES OFFSET TO THE WEST.

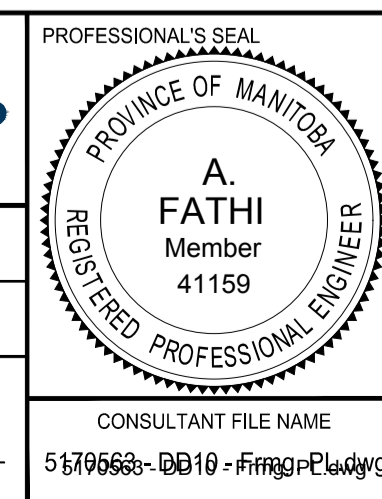
**TYPICAL PIER BEAM CONNECTIONS SU7 & SU8**

SCALE: 1:25

**LOCATION APPROVED**  
 UNDERGROUND STRUCTURES  
 SUPR. U/G STRUCTURES COMMITTEE DATE  
**NOTE:**  
 LOCATION OF UNDERGROUND STRUCTURES AS SHOWN ARE BASED ON THE BEST INFORMATION AVAILABLE BUT NO GUARANTEE IS GIVEN THAT ALL EXISTING UTILITIES ARE SHOWN OR THAT THE GIVEN LOCATIONS ARE EXACT. CONFIRMATION OF EXISTENCE AND EXACT LOCATION OF ALL SERVICES MUST BE OBTAINED FROM THE INDIVIDUAL UTILITIES BEFORE PROCEEDING WITH CONSTRUCTION.

No.	ISSUED FOR TENDER	17/10/13	DAN
0	ISSUED FOR TENDER	17/10/13	DAN
	REVISIONS	YYMMDD	BY

DESIGNED BY		CHECKED BY	
AG		AF	
DRAWN BY		APPROVED BY	
AH		BE	
HOR SCALE		VERT SCALE	
AS SHOWN		AS SHOWN	
DATE		DATE	
17/10/13		17/10/13	



BID OPPORTUNITY No. 754-2017

**THE CITY OF WINNIPEG**  
 PUBLIC WORKS DEPARTMENT  
 ENGINEERING DIVISION

**TACHE PROMENADE TREETOP LOOKOUT**

FRAMING PLAN

CITY DRAWING NUMBER B250-17-36	SHEET OF 36 OF 70
DRAWING No.	REV
10	0