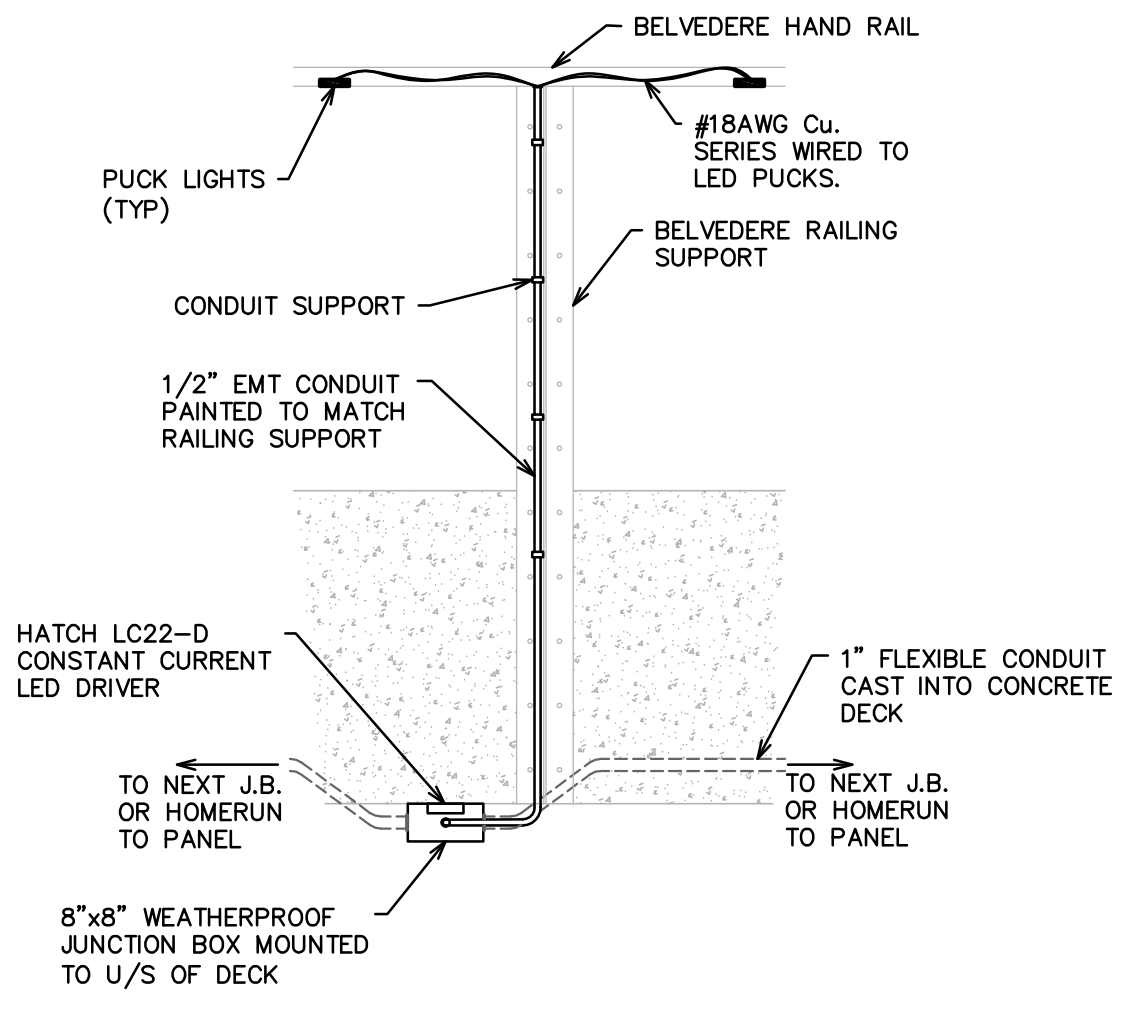
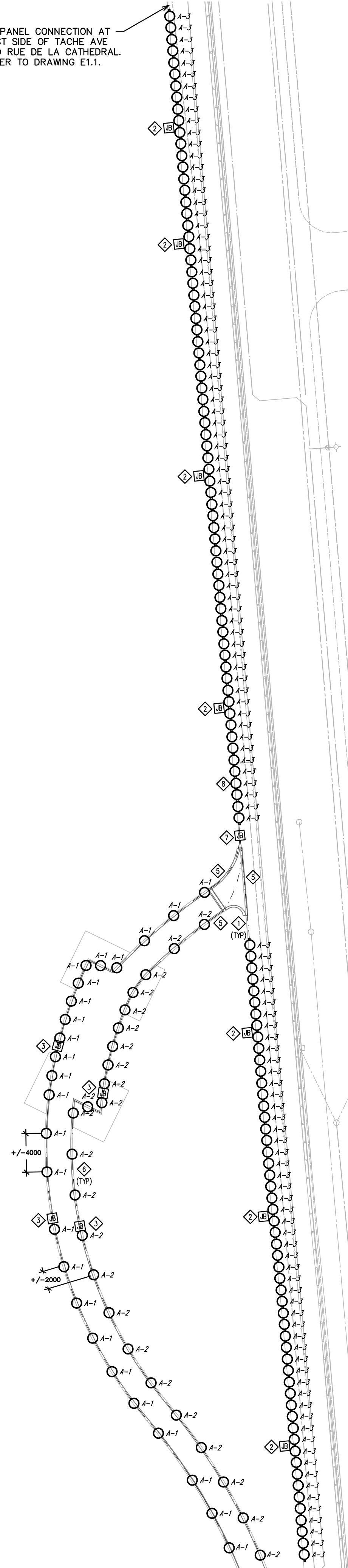
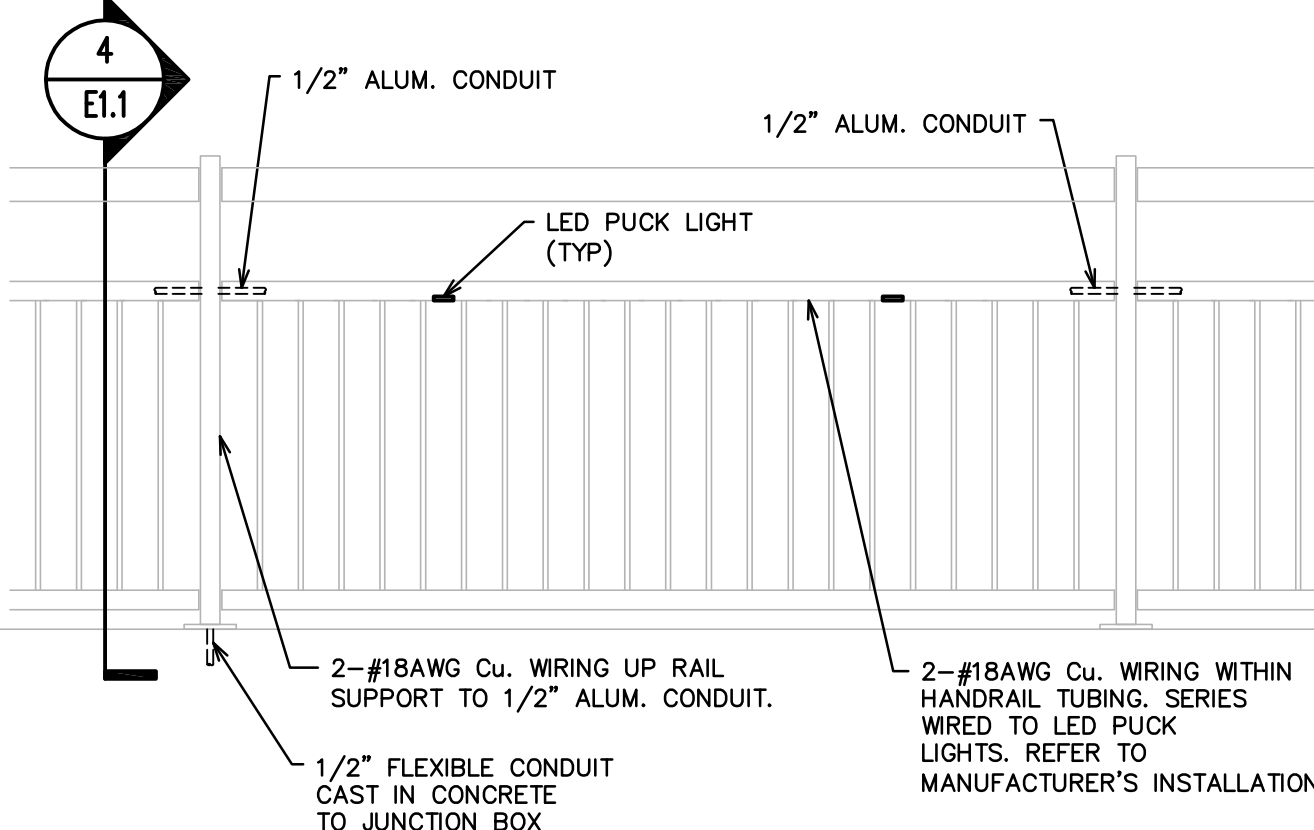


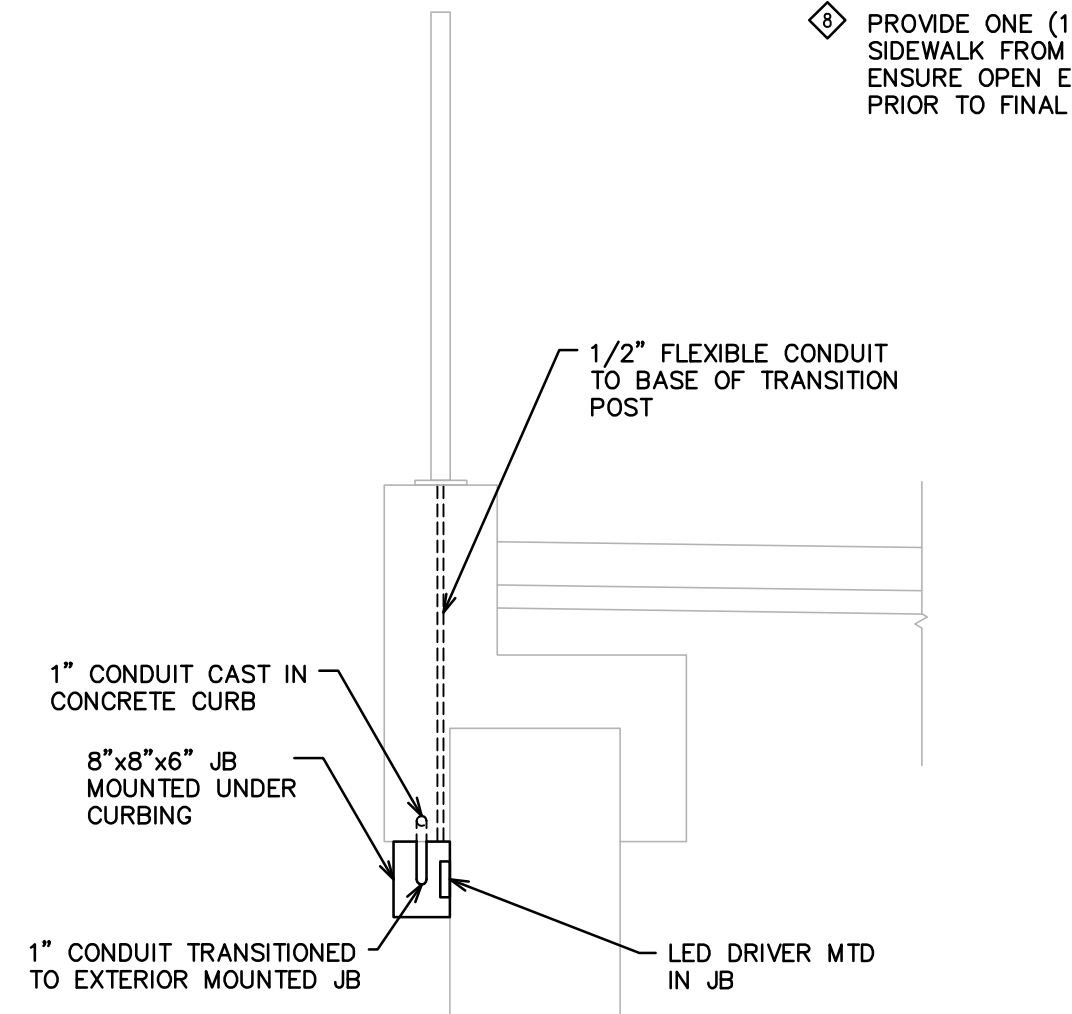
TO PANEL CONNECTION AT WEST SIDE OF TACHE AVE AND RUE DE LA CATHEDRAL. REFER TO DRAWING E1.1.



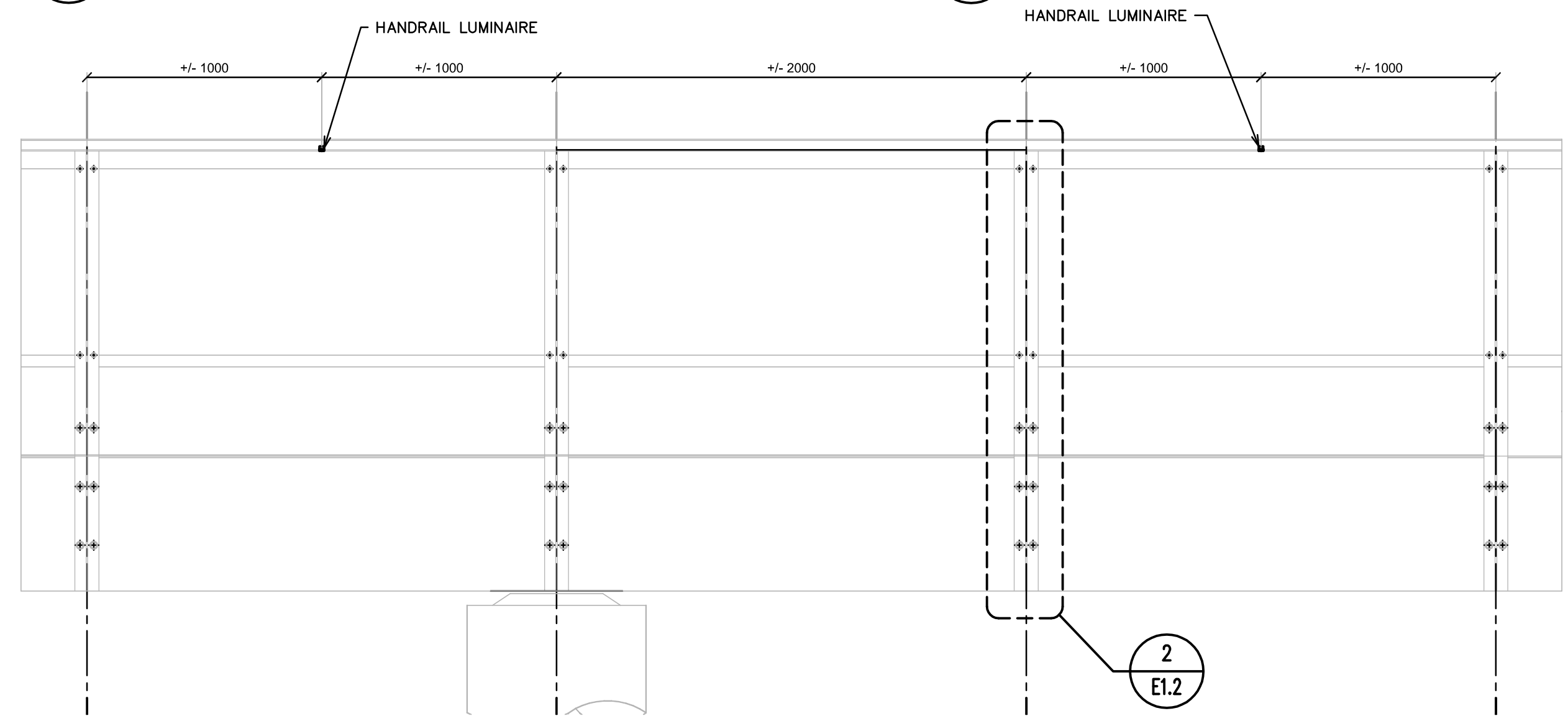
**2 BELVEDERE ELECTRICAL WIRING DETAIL**  
E1.2 SCALE: N.T.S.



**3 HANDRAIL LIGHTING DETAIL**  
E1.2 SCALE: N.T.S.



**4 HANDRAIL JUNCTION BOX MOUNTING DETAIL**  
E1.2 SCALE: N.T.S.



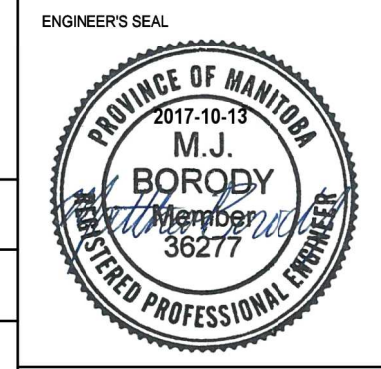
**5 BELVEDERE HANDRAIL LIGHTING DETAIL**  
E1.2 SCALE: N.T.S.

- GENERAL NOTES:**
1. ENSURE ALL CONDUITS, JUNCTION BOXES, FITTINGS ETC ARE WEATHER SEALED.
  2. BRANCH CIRCUIT WIRING FROM JUNCTION BOX TO DRIVERS SHALL BE RUN WITH #12 AWG RW90.
  3. WIRING FROM LED DRIVERS THROUGHOUT HANDRAIL SHALL BE WEATHER RATED FOR USE IN NON-APPROVED RACEWAY.
  4. PROVIDE 10' OF SLACK WIRING LOOSELY COILED WITHIN JUNCTION BOXES FOR BELVEDERE CIRCUITS TO ALLOW FOR POSSIBLE MOVEMENT WITHIN BRIDGE STRUCTURE.
- NOTES:**
- ◇ PROVIDE HLS VERTICAL DOWN ASYMMETRIC BEAM MINIPUCK, PLANET LIGHTING HLS-VA-HW-FF-WW WALLWASH MOUNTED IN HANDRAIL. REFER TO CIVIL AND LANDSCAPE DRAWINGS FOR INSTALLATION REQUIREMENTS.
  - ◇ PROVIDE 27mm (1") FLEXIBLE CONDUIT CAST INTO CONCRETE CURBING FOR SUPPLY TO BELVEDERE LIGHTING. CONDUIT SHALL TRANSITION TO EXTERIOR MOUNTED JUNCTION BOX(ES) AT BASE OF HANDRAIL TRANSITION POINT. REFER TO DETAIL 3/E1.1 AND 4/E1.1.
  - ◇ PROVIDE 27mm (1") FLEXIBLE CONDUIT CAST INTO CONCRETE DECK FOR SUPPLY TO BELVEDERE LIGHTING. CONDUIT SHALL TRANSITION TO EXTERIOR MOUNTED JUNCTION BOX(ES) AT BASE OF RAILING TRANSITION POINT. REFER TO DETAIL 2/E1.1.
  - ◇ PROVIDE METERED, PEDESTAL MOUNTED, 60A, 120/240V, 1-PHASE, 3W, 240CT COMBINATION PANELBOARD MOUNTED ON 4" CURB. COORDINATE LOCATION ON SITE WITH CONTRACT ADMINISTRATOR.
  - ◇ PROVIDE ONE (1) 1" CONDUIT TO EACH RAIL FOR LIGHTING CIRCUIT.
  - ◇ PUCK LIGHTS IN BELVEDERE RAILING SHALL BE MOUNTED APPROX 4m O/C. COORDINATE LOCATION ON SITE.
  - ◇ PROVIDE ONE (1) 8"x8" JUNCTION BOX MOUNTED TO EXTERIOR VERTICAL FACE OF SIDEWALK STRUCTURE.
  - ◇ PROVIDE ONE (1) 53mm (2") FLEXIBLE CONDUIT CAST INTO SIDEWALK FROM NEW JUNCTION BOX TO NEW PANELBOARD. ENSURE OPEN ENDS ARE ADEQUATELY CAPPED AND SEALED PRIOR TO FINAL TERMINATION.

**1 PROMENADE & BELVEDERE - ELECTRICAL LAYOUT**  
E1.2 SCALE: 1:200

11953  
**MCW / AGE**  
Consulting Professional Engineers  
210-1821 Wellington Avenue  
Winnipeg, Manitoba, R2W 1G4  
Phone: (204) 778-7900 Fax: (204) 778-1119  
E-Mail: mcw\_age@mcw.com

LOCATIONS APPROVED UNDERGROUND STRUCTURES		G.M. ELEV.	
SIGNED BY:	DATE:	DESIGNED BY:	CHECKED BY:
SUPV U/G STRUCTURES		MJB	EG
		DRAWN BY:	APPROVED BY:
		MJB	MJB
LOCATION OF UNDERGROUND STRUCTURES AS SHOWN ARE BASED ON THE BEST INFORMATION AVAILABLE BUT NO GUARANTEE IS GIVEN THAT ALL EXISTING UTILITIES ARE SHOWN OR THAT THE GIVEN LOCATIONS ARE EXACT CONFIRMATION OF EXISTANCE AND EXACT LOCATION OF ALL SERVICES MUST BE OBTAINED FROM THE INDIVIDUAL UTILITIES BEFORE PROCEEDING		HOR. SCALE:	AS NOTED
		VERTICAL:	AS NOTED
0	ISSUED FOR TENDER	17/10/13	MJB
NO.	REVISIONS	DATE	BY
		17/10/13	DATE



**THE CITY OF WINNIPEG**  
PUBLIC WORKS DEPARTMENT  
ENGINEERING DIVISION

**TACHE PROMENADE  
PROMENADE AND BELVEDERE  
ELECTRICAL**

CITY DRAWING NUMBER	B250-17-70
SHEET	70 OF 70
DRAWING No.	03
REV	0



BID OPPORTUNITY No. 754-2017

Oct. 13, 2017 - 11:53am  
 P:\11953\11953\000 Drawings\01 Elec\11953 - E1.2.dwg - Job E1.2