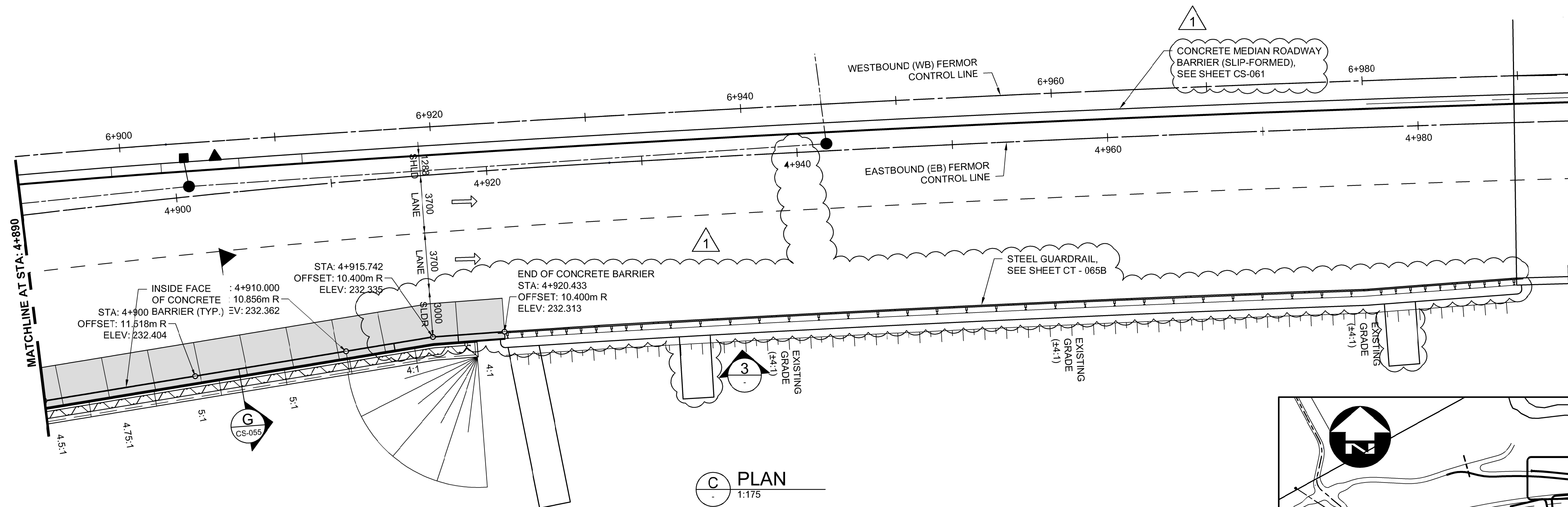
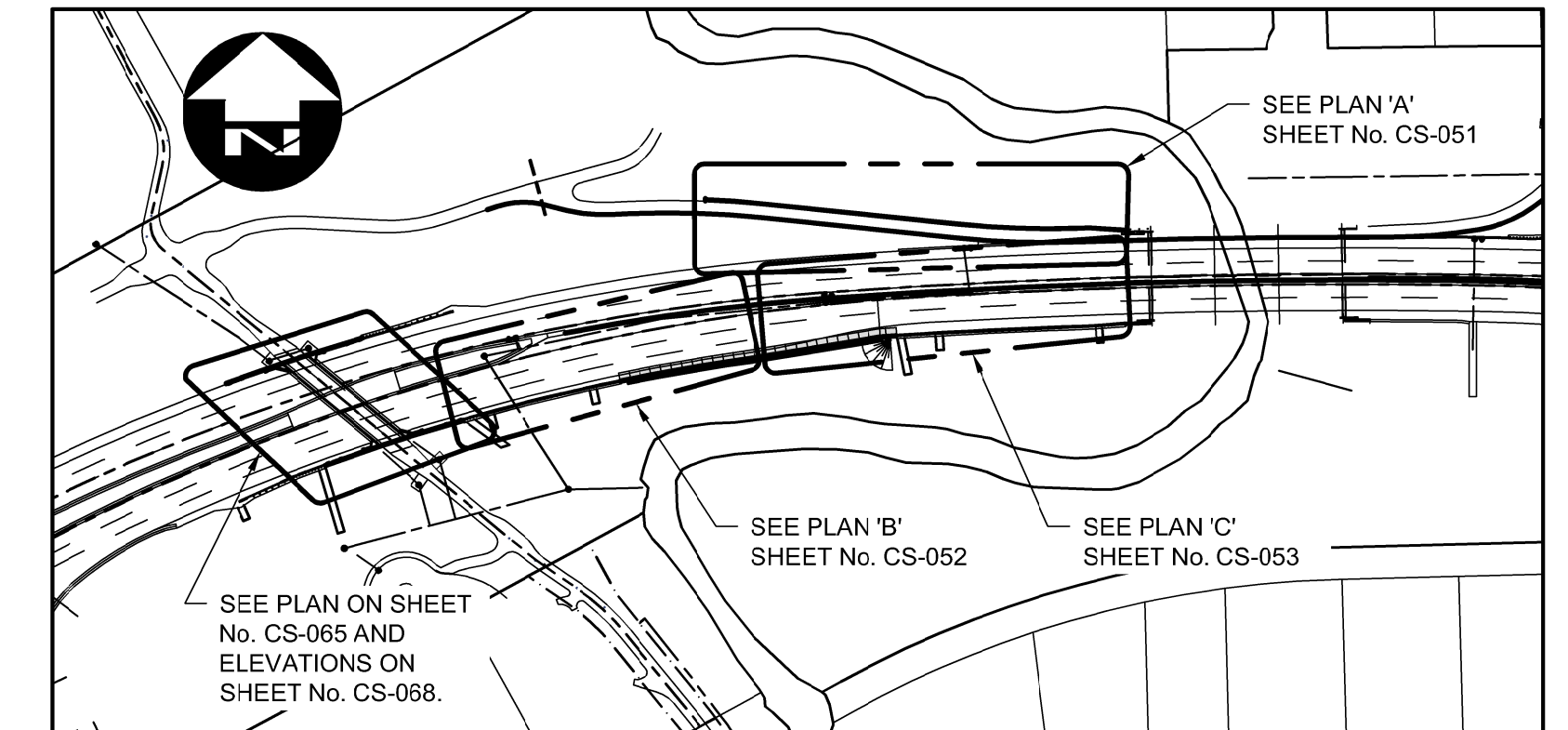


NOTES:

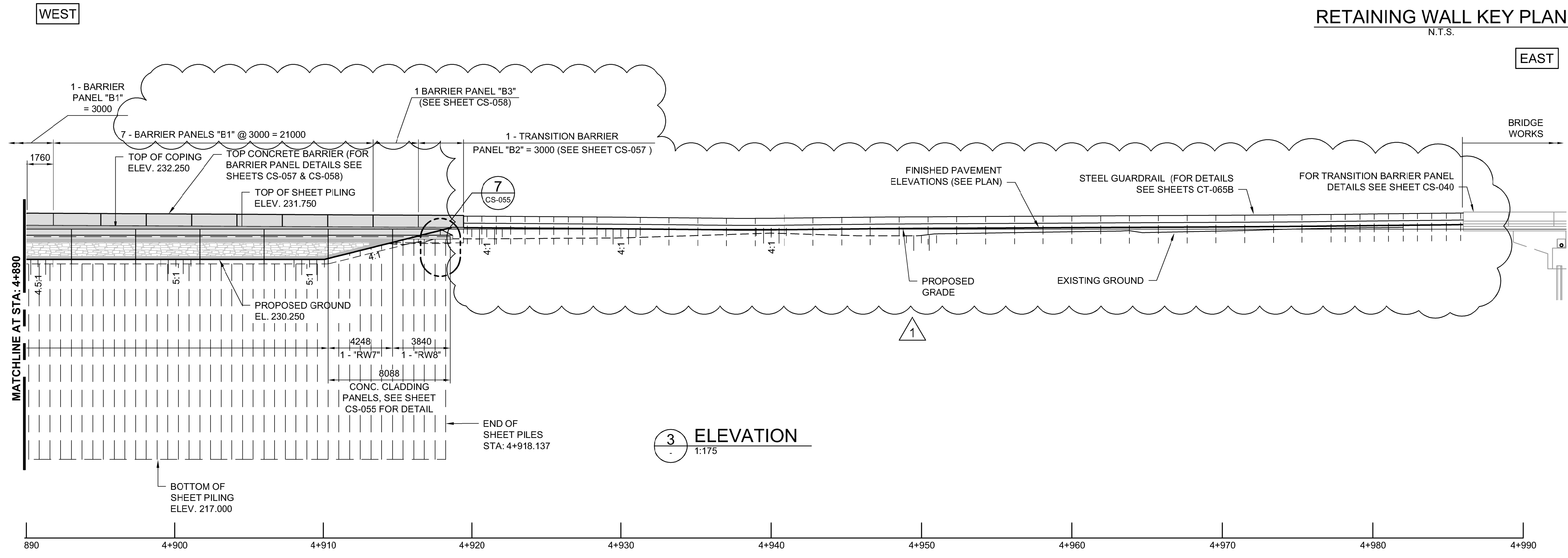
1. REFER TO SHEET No. CT-002 FOR CONTROL LINE GEOMETRY.
2. REFER TO SHEET Nos. CT-053 AND CT-054 FOR TYPICAL ROAD CROSS SECTIONS.



C PLAN
1:175



RETAINING WALL KEY PLAN
N.T.S.



3 ELEVATION
1:175

MATCHLINE AT STA: 4+890

890 4+900 4+910 4+920 4+930 4+940 4+950 4+960 4+970 4+980 4+990

G:\CAD\175932\Drawings\Structural\Contract\BRIDGE-CON-CS-RETAINING WALL_LAYOUT_3.dwg



NO.	REVISIONS	DATE	BY	DATE
1	ADDENDUM #5	18/03/16	DRA	
0	ISSUED FOR TENDER	18/02/09	DRA	

DESIGNED BY	DRA	CHECKED BY	SSR
DRAWN BY	CGC/DN	APPROVED BY	MBL
HOR. SCALE	AS SHOWN	RELEASED FOR CONSTRUCTION	
VERTICAL	AS SHOWN		
DATE	2018/02/09	DATE	

ENGINEER'S SEAL
 PROVINCE OF MANITOBA
D.R.C. AMORIM
 Member
 33215
 REGISTERED PROFESSIONAL ENGINEER
 CONSULTANT PROJECT NUMBER
 17-5932

THE CITY OF WINNIPEG
 PUBLIC WORKS DEPARTMENT
Winnipeg
FERMOR AVENUE BRIDGE OVER SEINE RIVER
 BRIDGE RE-HABILITATION, PEDESTRIAN-CYCLIST UNDERPASS STRUCTURE
 AND ROADWORKS FROM ST. ANNE'S ROAD TO ARCHIBALD STREET
 CITY DRAWING NUMBER
 U-243-2017-CS-053
 SHEET
 053 OF 100
 CONSULTANT DRAWING NUMBER
 CS-053
RETAINING WALL LAYOUT
 EASTBOUND 2 OF 2