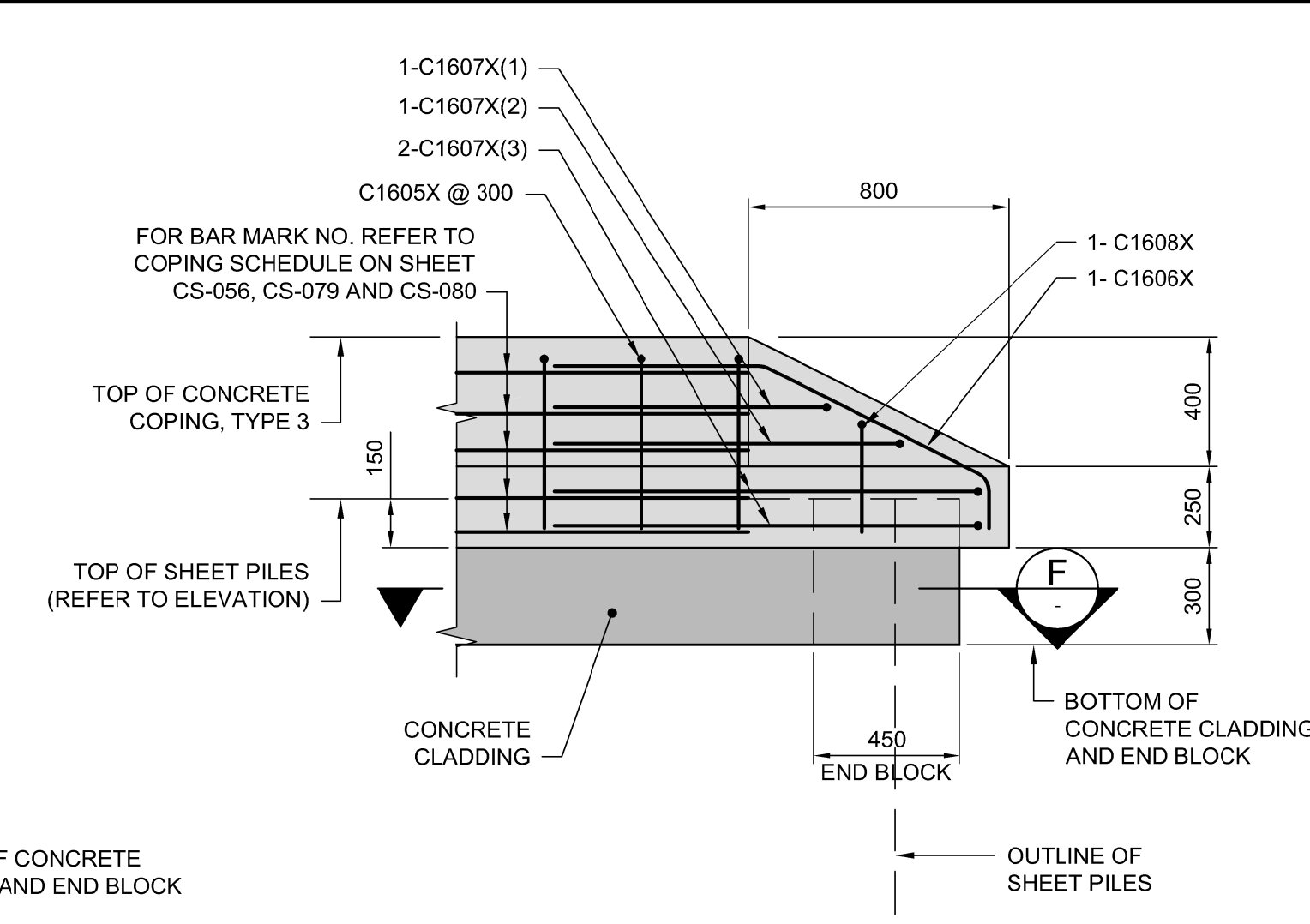
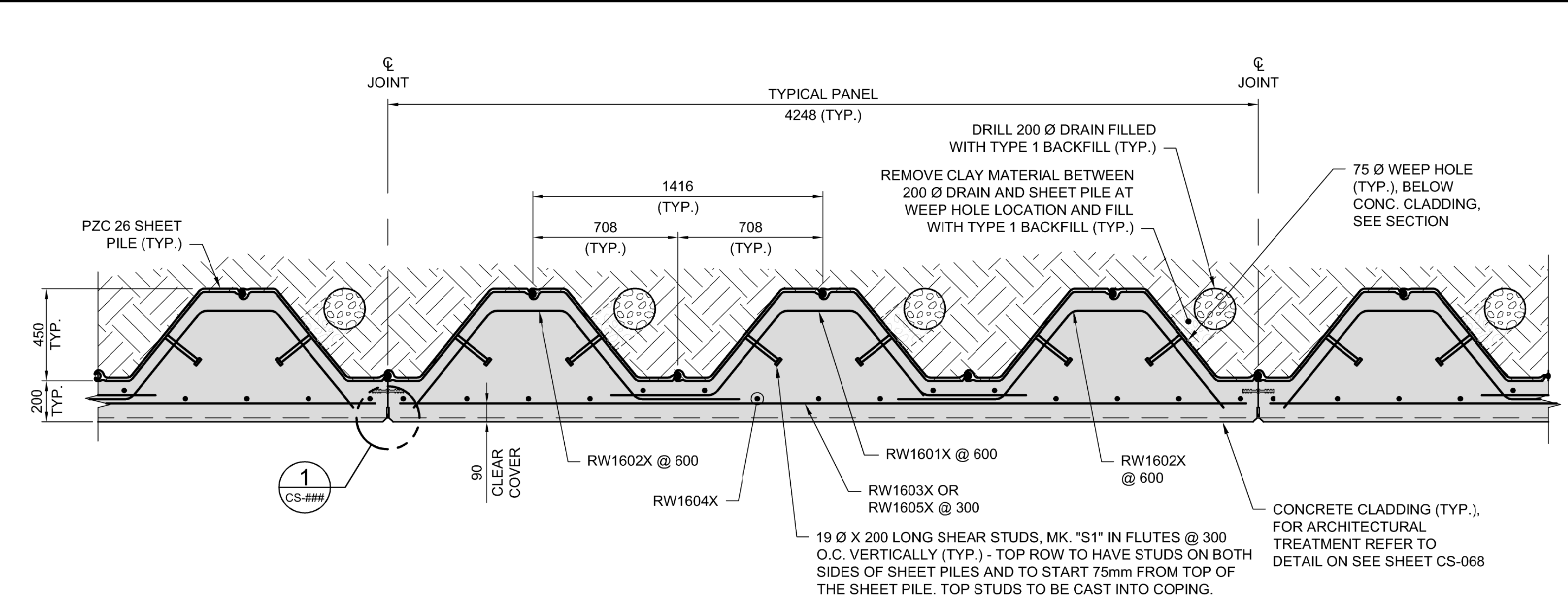


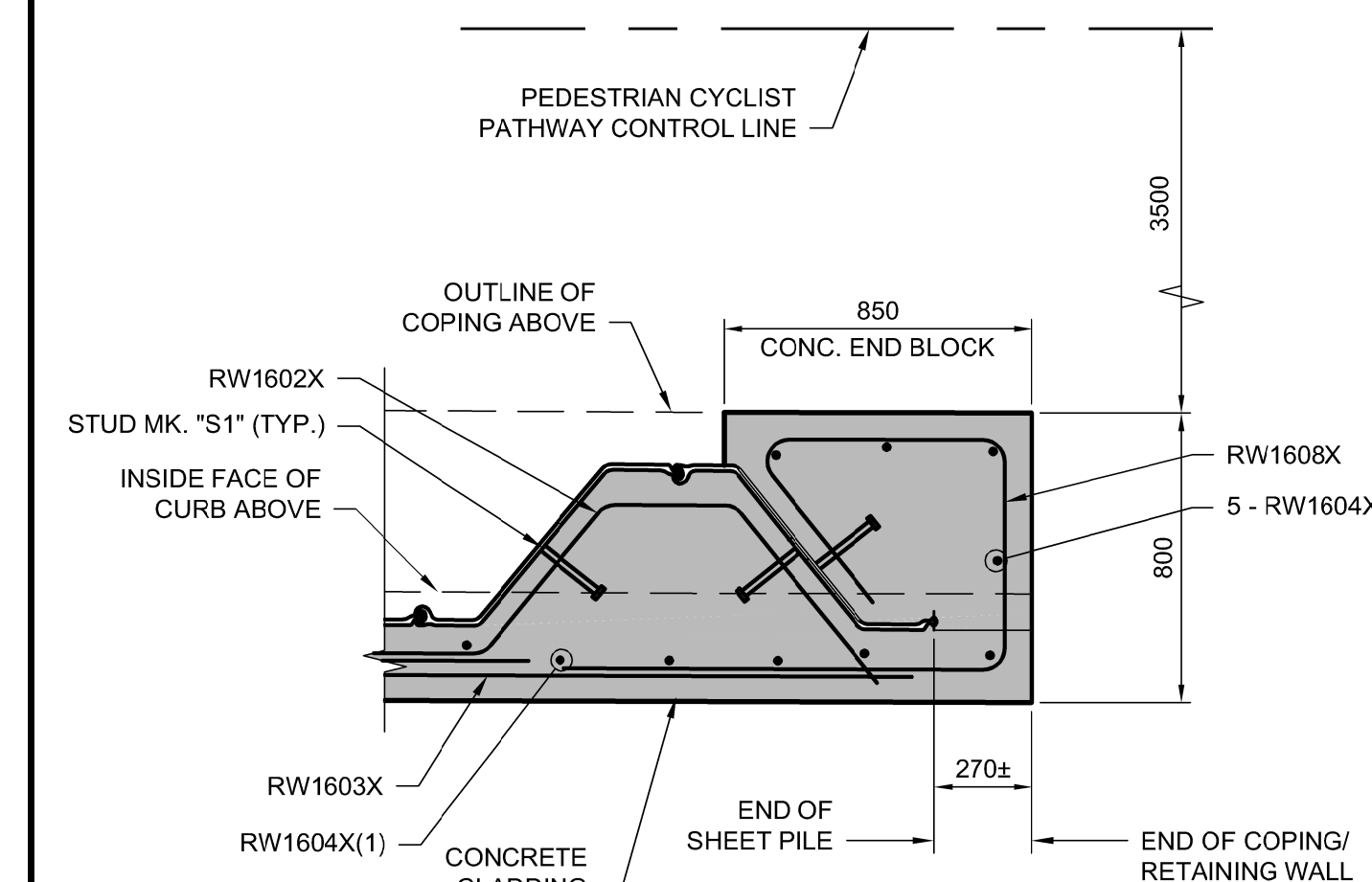
6 DETAIL
CS-051 1:20



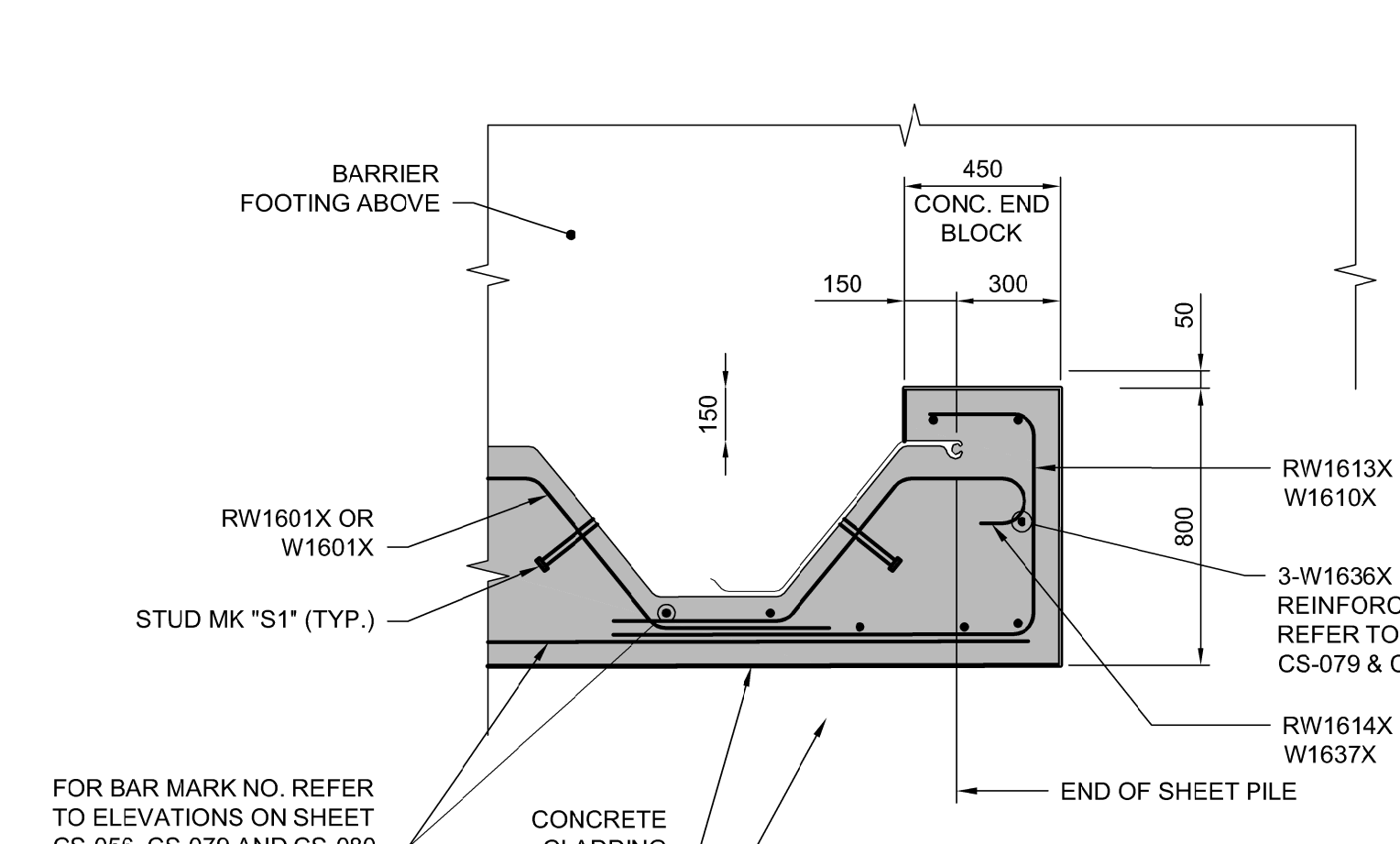
7 DETAIL
CS-052, 053 CS-068 1:20



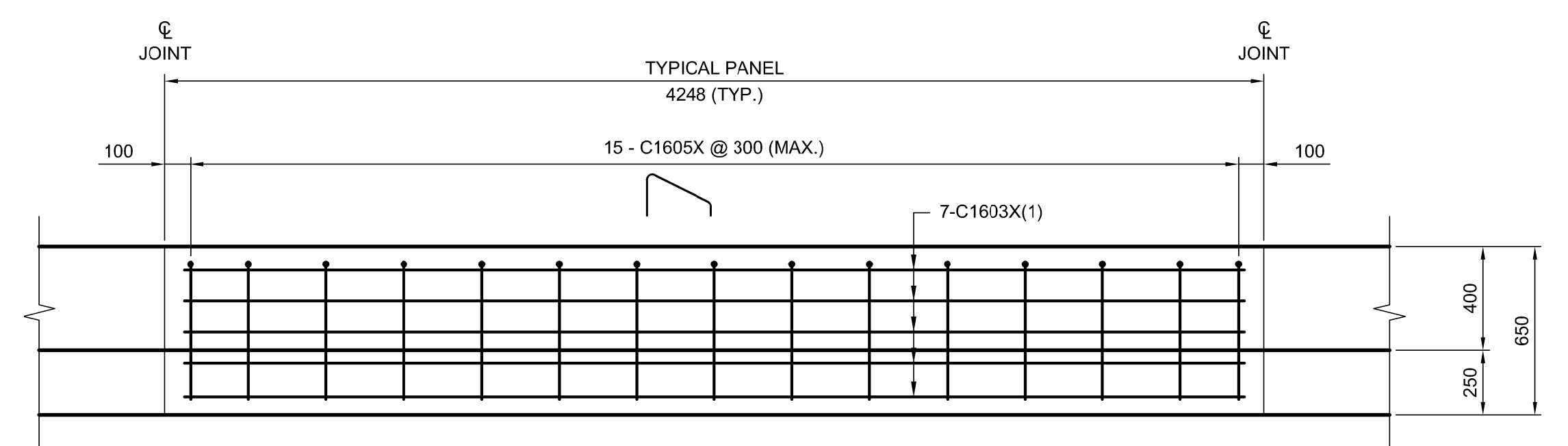
TYPICAL SECTION OF RETAINING WALL CLADDING AND DRAINAGE
1:20



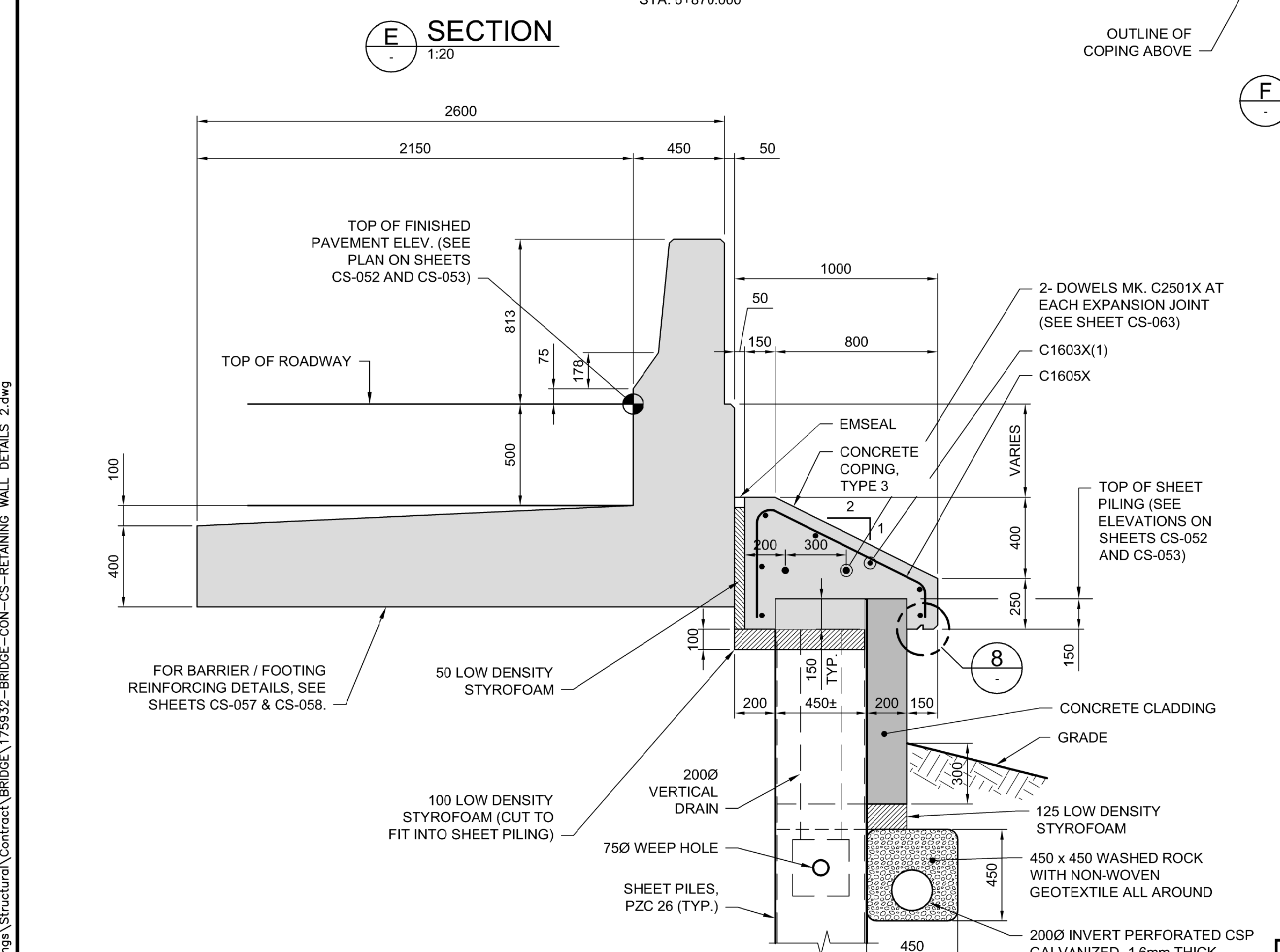
E SECTION
1:20



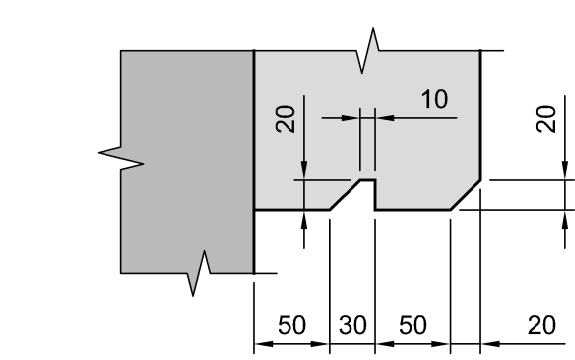
F SECTION
1:20



TYPICAL ELEVATION OF COPING REINFORCEMENT
1:20
COPING TYPE 3 SHOWN
COPING TYPE 1 LAYOUT SIMILAR



G SECTION
CS-052 CS-053 1:20
RETAINING WALL WITH TYPE 3 CONCRETE COPING



8 COPING DRIP DETAIL
1:5



- NOTES:**
- REFER TO SHEET CS-063 FOR STANDARD JOINT DETAILS.
 - ALL EXPOSED EDGES TO BE CHAMFERED 20 mm UNLESS NOTED OTHERWISE.

G:\CAD\175932\Drawings\Structural\Bridges\CON-CO-CO-RETAINING WALL DETAILS 2.dwg



NO.	REVISIONS	DATE	BY	DATE
1	ADDENDUM #5	18/03/16	DRA	
0	ISSUED FOR TENDER	18/02/09	DRA	

DESIGNED BY	CHECKED BY
DRA	SSR
DRAWN BY	APPROVED BY
CGC	MBL
HOR. SCALE	RELEASED FOR CONSTRUCTION
AS SHOWN	
VERTICAL SCALE	DATE
AS SHOWN	2018/02/09

ENGINEER'S SEAL
PROVINCE OF MANITOBA
D.R.C. AMORIM
Member 33215
REGISTERED PROFESSIONAL ENGINEER
CONSULTANT PROJECT NUMBER
17-5932

THE CITY OF WINNIPEG
PUBLIC WORKS DEPARTMENT
Winnipeg
FERMOR AVENUE BRIDGE OVER SEINE RIVER
BRIDGE RE-ABILITATION, PEDESTRIAN-CYCLIST UNDERPASS STRUCTURE AND ROADWORKS FROM ST. ANNE'S ROAD TO ARCHIBALD STREET
CITY DRAWING NUMBER U-243-2017-CS-055
SHEET 055 OF 100
CONSULTANT DRAWING NUMBER CS-055
RETAINING WALL DETAILS 2 OF 3