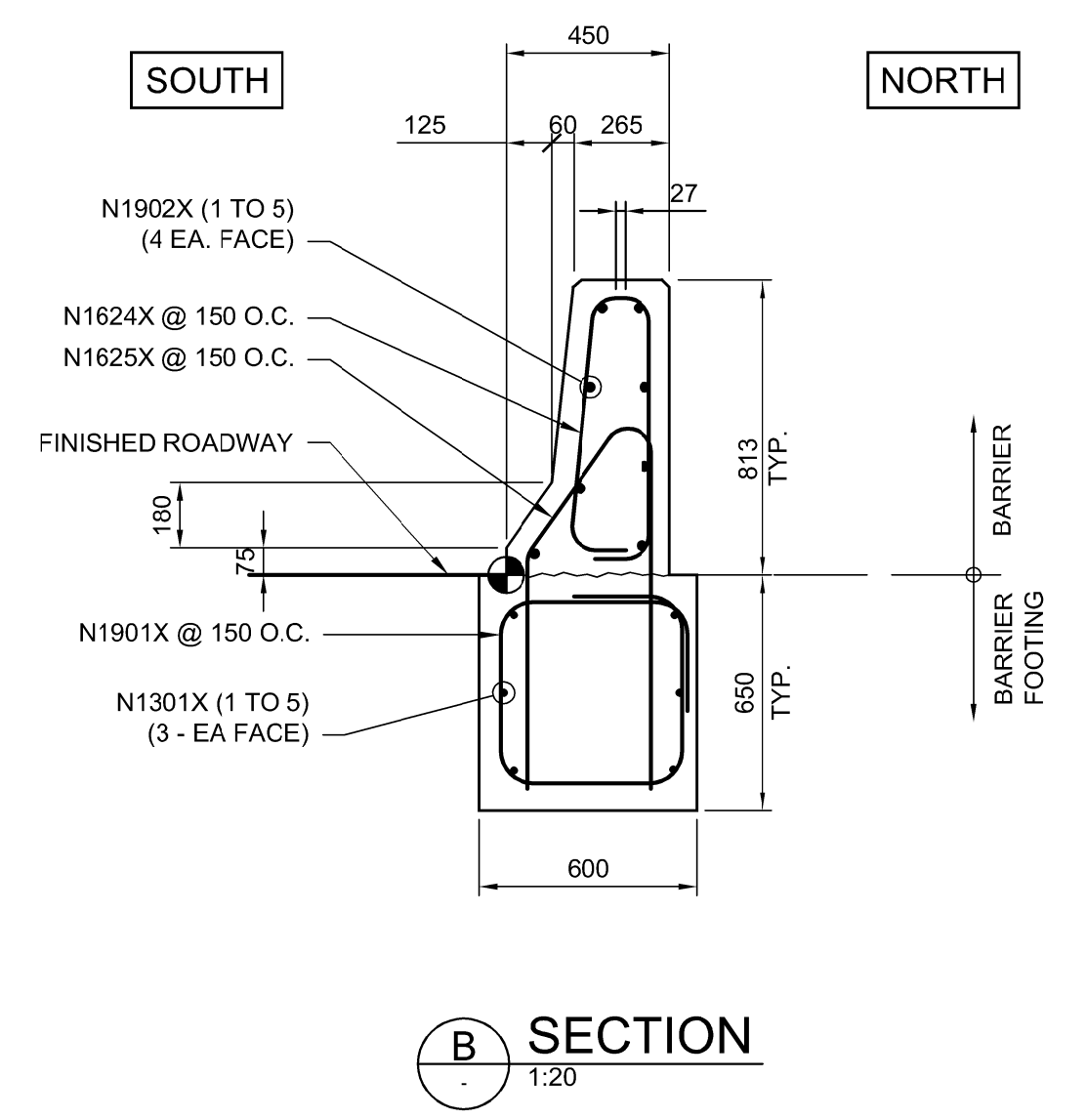
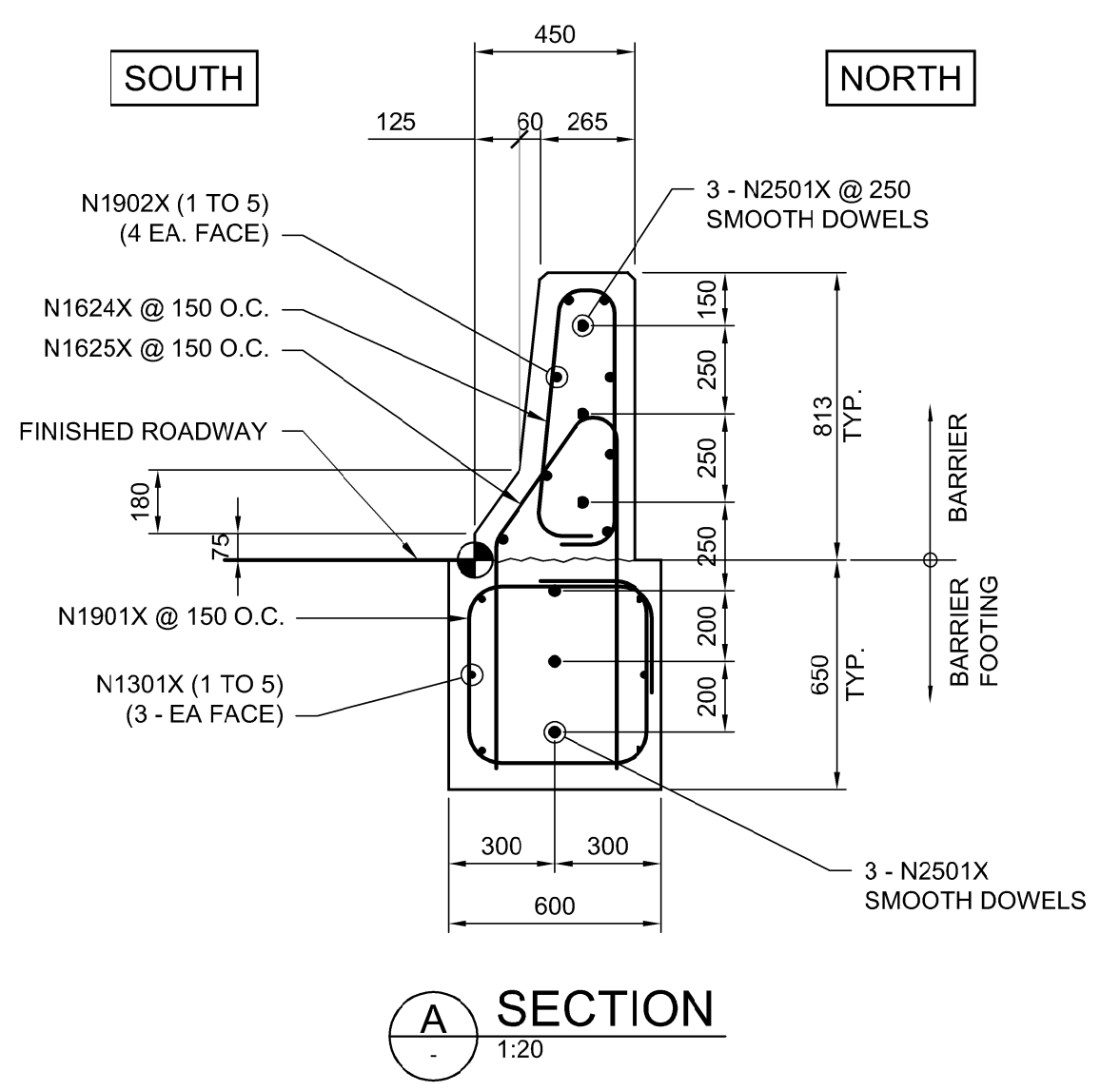


ROADWAY NORTH SHOULDER BARRIER ELEVATION
1:100



ROADWAY NORTH SHOULDER BARRIERS						
PANEL	TYPE	QTY	STIRRUPS AND TIES			LONGITUDINAL BARS
			N1624X	N1625X	N1901X	N1301X (1 TO 5) AND N1902X (2 TO 6)
'B1N'	1	120	120	120	120	SEE LONGITUDINAL REINFORCING LAYOUT 'B1N'
'B2N'	1	282	282	282	282	SEE LONGITUDINAL REINFORCING LAYOUT 'B2N'
'B3N'	1	192	192	192	192	SEE LONGITUDINAL REINFORCING LAYOUT 'B3N'
'B4N'	1	43	43	43	43	SEE LONGITUDINAL REINFORCING LAYOUT 'B4N'
'B5N'	1	SEE SHEET CS-060 FOR DETAILS				
'B6N'	2	SEE SHEET CS-060 FOR DETAILS				
CONSTRUCTION JOINT DOWELS						
NO. OF JOINTS	REBAR DOWELS EACH JOINT					
5	3 - N2501X SMOOTH DOWELS X 600 LG. IN BARRIER					
5	3 - N2501X SMOOTH DOWELS X 600 LG. IN BARRIER FOOTING					

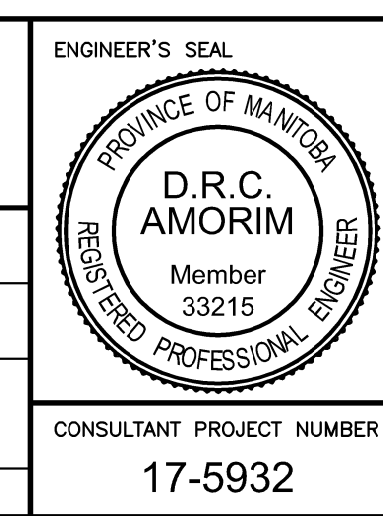
BILL OF MISCELLANEOUS METAL FOR ROADWAY NORTH SHOULDER BARRIERS				
MARK	QTY	DESCRIPTION	UNIT MASS	TOTAL MASS
Y1	5	19 DIA. F-57 DAYTON SUPERIOR STAINLESS STEEL EXPANDED COIL FERRULE INSERT C/W 1 PLATE WASHER	0.38	1.90
TOTAL MASS (kg) = 1.90				

- NOTES:**
- ALL EXPOSED EDGES TO BE CHAMFERED 20 mm UNLESS NOTED OTHERWISE.
 - FOR STANDARD JOINT DETAILS, REFER TO SHEET CS-063.
 - REFER SHEET No. CT-002 FOR CONTROL LINE GEOMETRY
 - REFER TO SHEET CT-053 AND CT-054 FOR TYPICAL ROAD CROSS SECTIONS.
 - FORMED OR CUT CONTRACTION JOINTS ARE NOT REQUIRED, UNLESS OTHERWISE INDICATED
 - ALL LONGITUDINAL REINFORCING SHALL BE CONTINUOUS UNLESS OTHERWISE INDICATED.

G:\CAD\175932\Drawings\Structural\BRIDGE-CON-CS-ROADWAY NORTH SHOULDER BARRIER DETAILS 1.dwg



DESIGNED BY	DRA	CHECKED BY	SSR
DRAWN BY	CGC/DN	APPROVED BY	MBL
HOR. SCALE	AS SHOWN	RELEASED FOR CONSTRUCTION	
VERTICAL	AS SHOWN		
NO. REVISIONS	DATE	BY	DATE
1	ADDENDUM #5	18/03/16	DRA
0	ISSUED FOR TENDER	18/02/09	DRA
		2018/02/09	



THE CITY OF WINNIPEG PUBLIC WORKS DEPARTMENT

Winnipeg

FERMOR AVENUE BRIDGE OVER SEINE RIVER
BRIDGE RE-HABILITATION, PEDESTRIAN-CYCLIST UNDERPASS STRUCTURE AND ROADWORKS FROM ST. ANNE'S ROAD TO ARCHIBALD STREET

CITY DRAWING NUMBER: U-243-2017-CS-059
SHEET 059 OF 100
CONSULTANT DRAWING NUMBER: CS-059

ROADWAY NORTH SHOULDER BARRIER DETAILS 1 OF 2