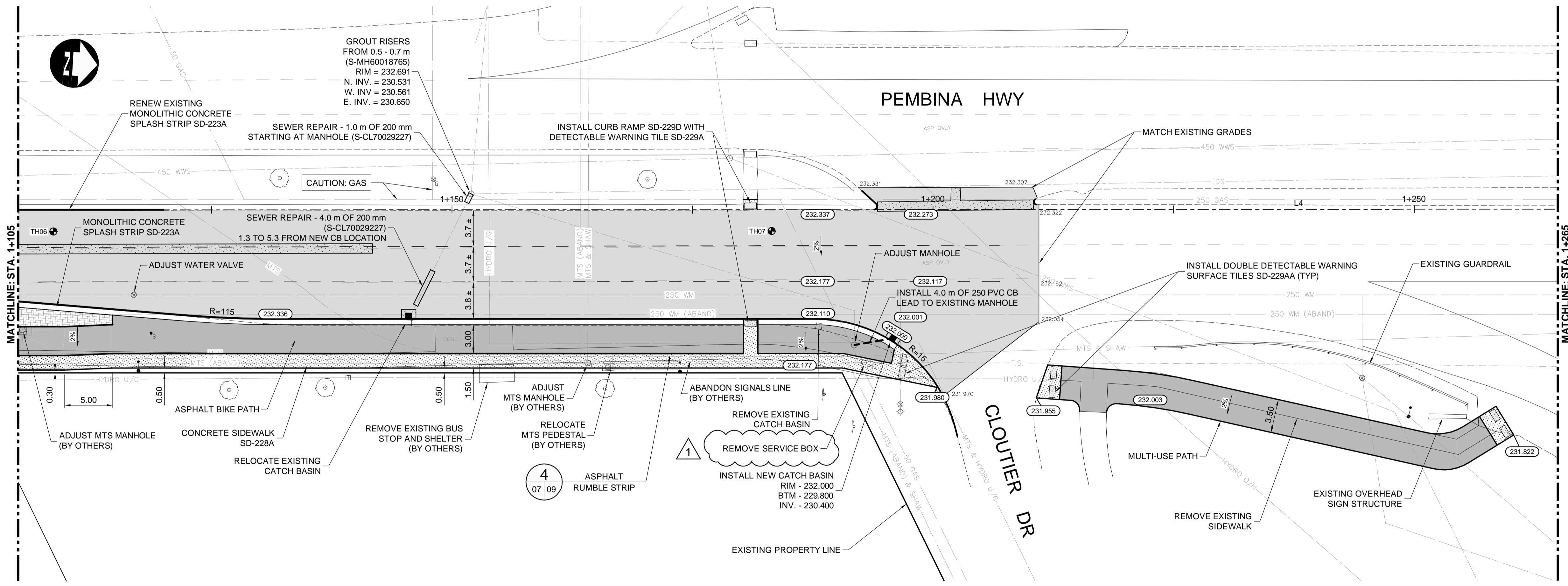
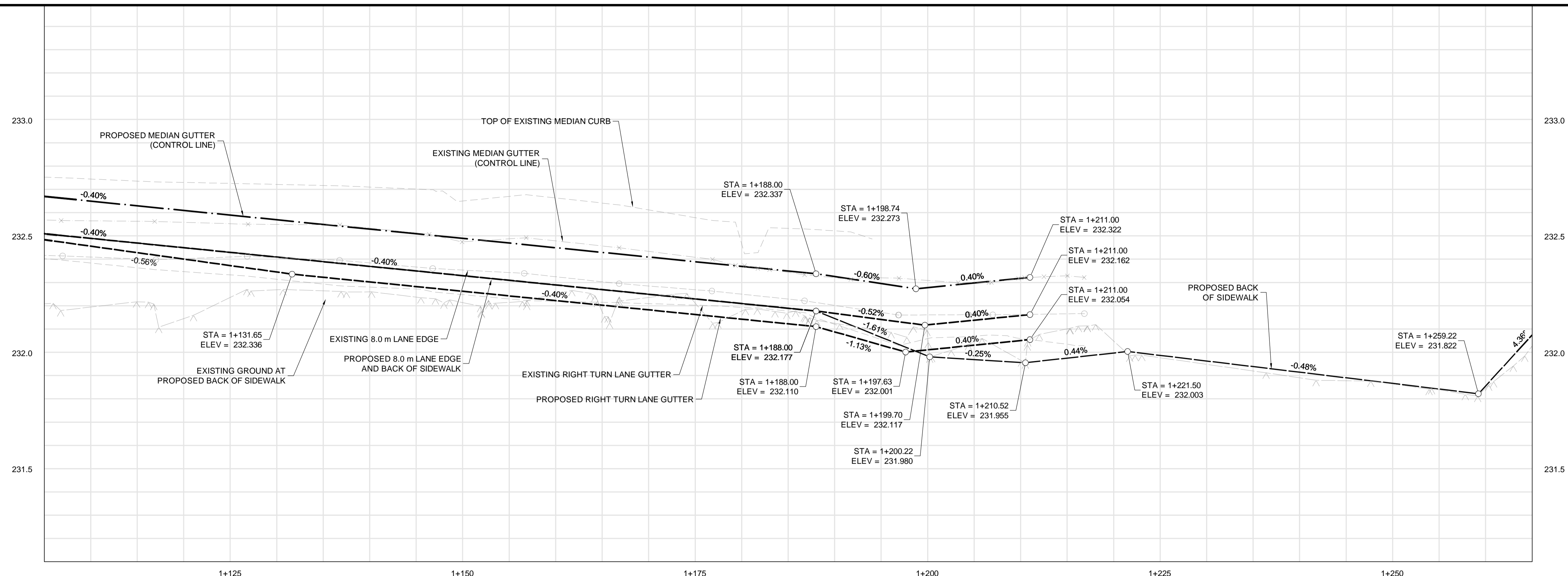


CONSTRUCTION NOTES:

1. ALL DIMENSIONS ARE TO BACK OF CURB.
2. ISOLATE MISCELLANEOUS ITEMS IN NEW CONCRETE WORKS AS PER SD-228C.
3. LEGAL PLAN AND UNDERGROUND INFORMATION FROM CITY OF WINNIPEG LBIS. CONTRACTOR TO VERIFY ALL UNDERGROUNDS IN THE FIELD.
4. CONTRACTOR TO TAKE PRECAUTIONARY STEPS TO AVOID DAMAGE FROM CONSTRUCTION ACTIVITIES TO TREES WITHIN THE LIMITS OF CONSTRUCTION.
5. LOCATION OF EXISTING SERVICES TO BE CONFIRMED IN THE FIELD BY THE CONTRACTOR.
6. CB LEADS TO BE INSTALLED AT MIN. 1.0% SLOPE OR AS DIRECTED BY CONTRACT ADMINISTRATOR.
7. LIMITS OF SIDEWALK RENEWAL TO BE FINALIZED IN THE FIELD BY THE CONTRACT ADMINISTRATOR.
8. LIMITS OF BOULEVARD GRADING TO BE FINALIZED IN THE FIELD BY THE CONTRACT ADMINISTRATOR.



METRIC

WHOLE NUMBERS INDICATE MILLIMETRES
DECIMAL NUMBERS INDICATE METRES

WARNING

IF POWER EQUIPMENT OR EXPLOSIVES ARE TO BE USED FOR EXCAVATION ON THIS PROJECT THE CONTRACTOR MUST:

1. NOTIFY THE GAS COMPANY OF THE PROPOSED LOCATION OF EXCAVATION.
2. TAKE PRECAUTION TO AVOID DAMAGE TO GAS COMPANY INSTALLATIONS SEE PROVINCIAL REGULATION 210/72 FOR DETAILS.
3. OBTAIN EXCAVATION PERMITS PRIOR TO CONSTRUCTION.



G:\CAD\176149\Drawings\Roadworks\Contract\176149-CON-CT-PLAN-PROFILE.dwg

EXISTING	LEGEND-PLAN	PROPOSED	EXISTING	LEGEND-PLAN	PROPOSED	EXISTING	LEGEND-PROFILE	PROPOSED
150 WM	WATERMAIN	150 WM	CONCRETE	CONCRETE	150 WM	WATERMAIN	150 WM	WATERMAIN
300 LDS	HYDRANT	300 LDS	ASPHALT	ASPHALT	300 LDS	LAND DRAINAGE SEWER	300 LDS	LAND DRAINAGE SEWER
250 WWS	VALVE	250 WWS	PLANING	PLANING	250 WWS	WASTE WATER SEWER	250 WWS	WASTE WATER SEWER
100 GAS	MANHOLE	100 GAS	SIDEWALK	SIDEWALK	100 GAS	HYDRANT	100 GAS	HYDRANT
300 LDS	CATCH BASIN	300 LDS	PAVING STONES	PAVING STONES	300 LDS	VALVE	300 LDS	VALVE
250 WWS	CURB INLET	250 WWS	PARTIAL DEPTH REPAIR	PARTIAL DEPTH REPAIR	250 WWS	PROPERTY LINE	250 WWS	PROPERTY LINE
150 WM	LAND DRAINAGE SEWER	150 WM	DRAINAGE ARROW	DRAINAGE ARROW	150 WM	NORTH/WEST GUTTER	150 WM	NORTH/WEST GUTTER
300 LDS	WASTE WATER SEWER	300 LDS			300 LDS	SOUTH/EAST GUTTER	300 LDS	SOUTH/EAST GUTTER
250 WWS	HYDRO	250 WWS			250 WWS	NORTH/WEST DITCH	250 WWS	NORTH/WEST DITCH
100 GAS	M.T.S.	100 GAS			100 GAS	SOUTH/EAST DITCH	100 GAS	SOUTH/EAST DITCH
100 GAS	GAS	100 GAS			100 GAS		100 GAS	

UNDERGROUND STRUCTURES	
SUPPLY	DATE

B.M. ELEV.			

DESIGNED BY	TJH
DRAWN BY	TJH
CHECKED BY	TS
APPROVED BY	TJP



ENGINEER'S SEAL
CONSULTANT PROJECT NUMBER
17-6149

THE CITY OF WINNIPEG
PUBLIC WORKS DEPARTMENT

PEMBINA HIGHWAY REHABILITATION AND ACTIVE TRANSPORTATION PATH

NORTHBOUND PEMBINA - STA. 1+105 TO STA. 1+625 (PLAN-PROFILE)

CITY DRAWING NUMBER: P-3493-2018-07
SHEET 07 OF 10
CONSULTANT DRAWING NUMBER