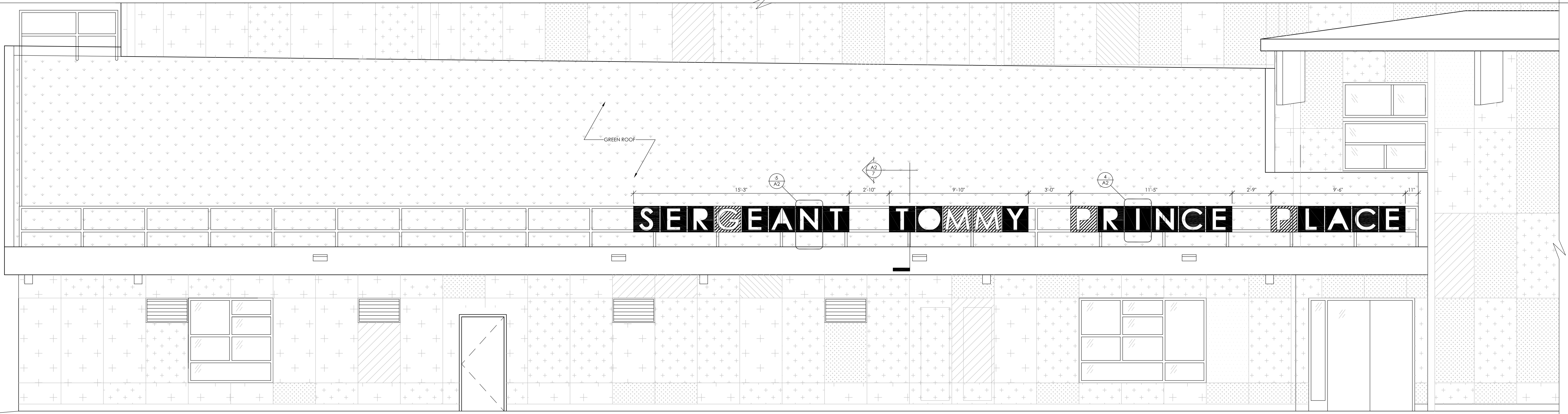


SEPARATE PRICE:

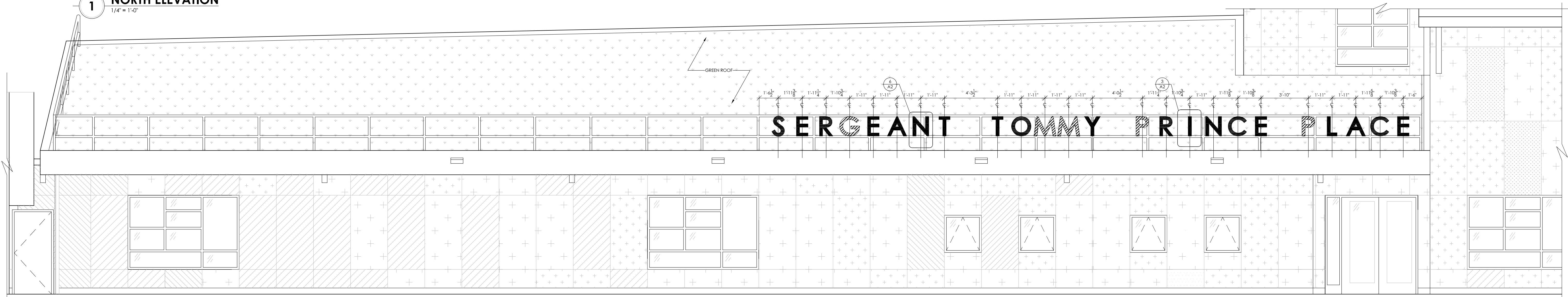
1. BASE PRICE TO INCLUDE ALL NEW ALUMINIUM LETTERING TO SUIT NEW BUILDING SIGNAGE.
2. CONTRACTOR TO PROVIDE A SEPARATE PRICE FOR THE RE-USE & RE-FINISHING OF EXISTING LETTERING IN LIEU OF NEW LETTERING WHERE APPLICABLE. REFER TO ELEVATIONS ON THIS PAGE FOR LOCATIONS & QUANTITIES OF EXISTING LETTERING TO BE RE-USED. REFER TO FORM B: PRICES - SEPARATE PRICES FOR DETAILS.

LEGEND:

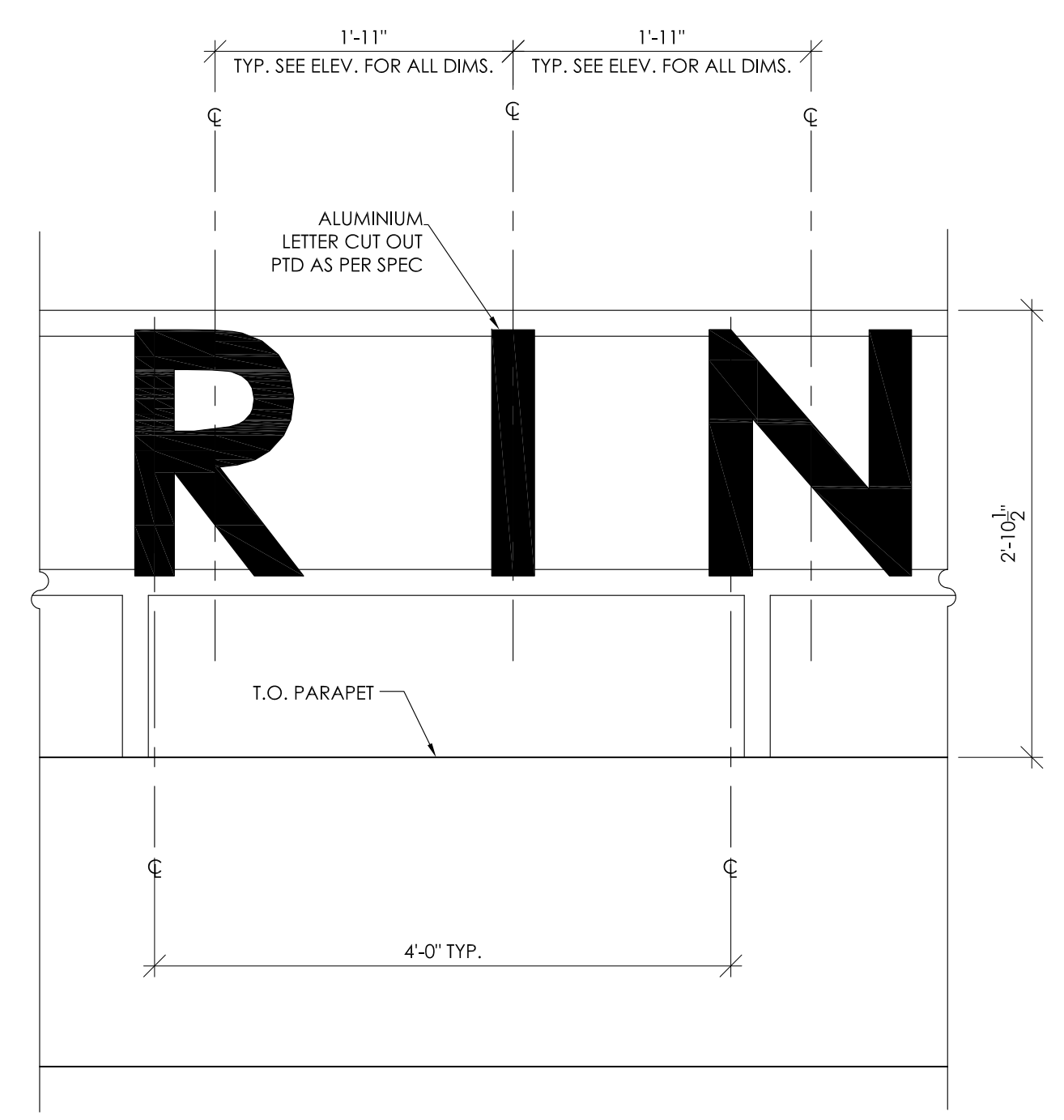
- EXISTING LETTERING TO BE REMOVED, RE-FINISHED TO MATCH NEW LETTERING & RE-INSTALLED IN NEW LOCATIONS AS INDICATED ON THIS PAGE. SEE SEPARATE PRICE #1 FORM B: PRICES - SEPARATE PRICES FOR DETAILS. REFER TO DRAWING D1 FOR ORIGINAL LETTER LOCATIONS.
- NEW LETTERING REQ. AS PER SEPARATE PRICE #1. BASE PRICE TO INCLUDE ALL NEW LETTERING. REFER TO A3 SIGNAGE LETTERING DETAILS FOR FABRICATION DETAILS, MATERIALS & FINISHES.



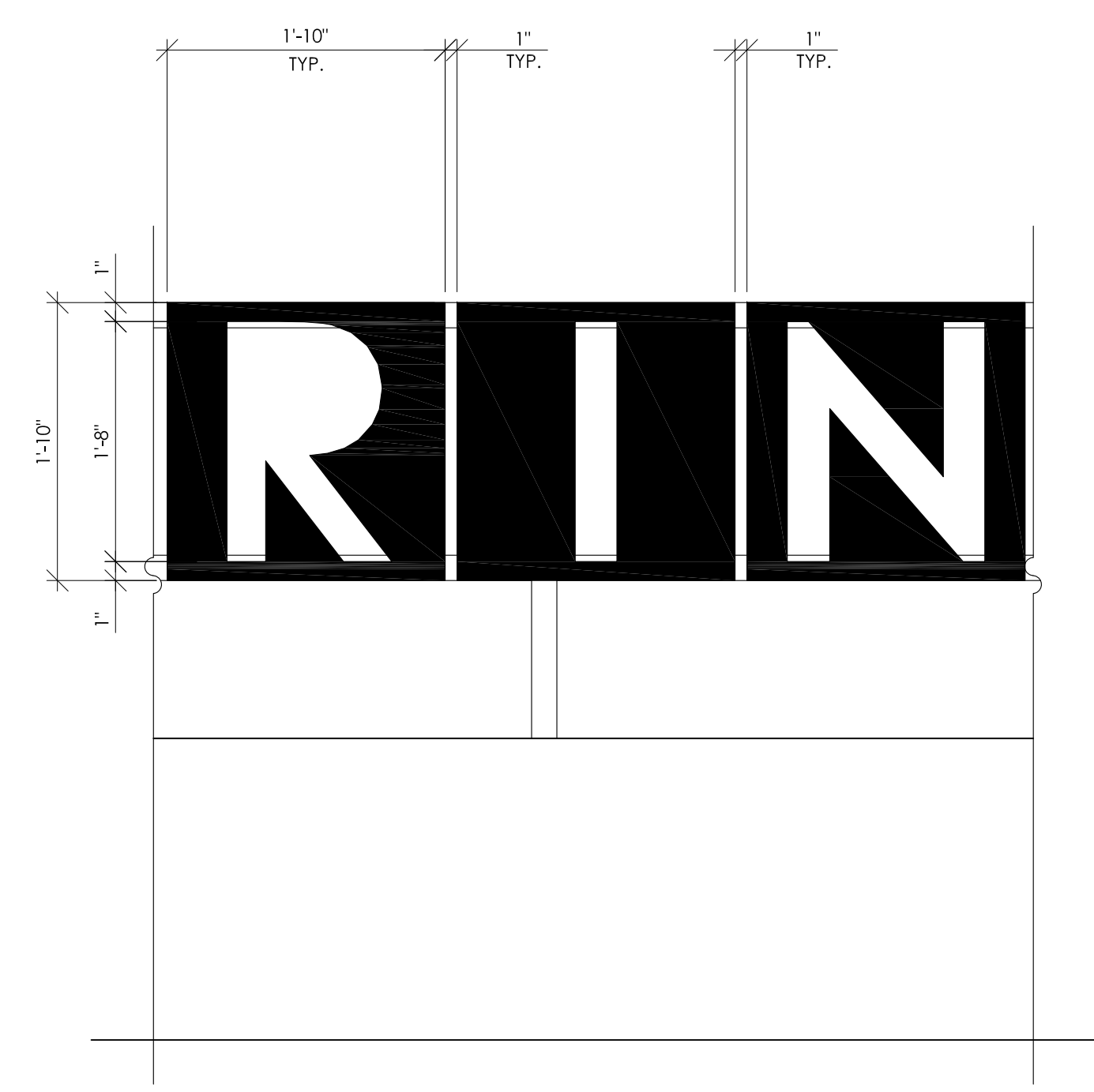
1 NORTH ELEVATION
1/4" = 1'-0"



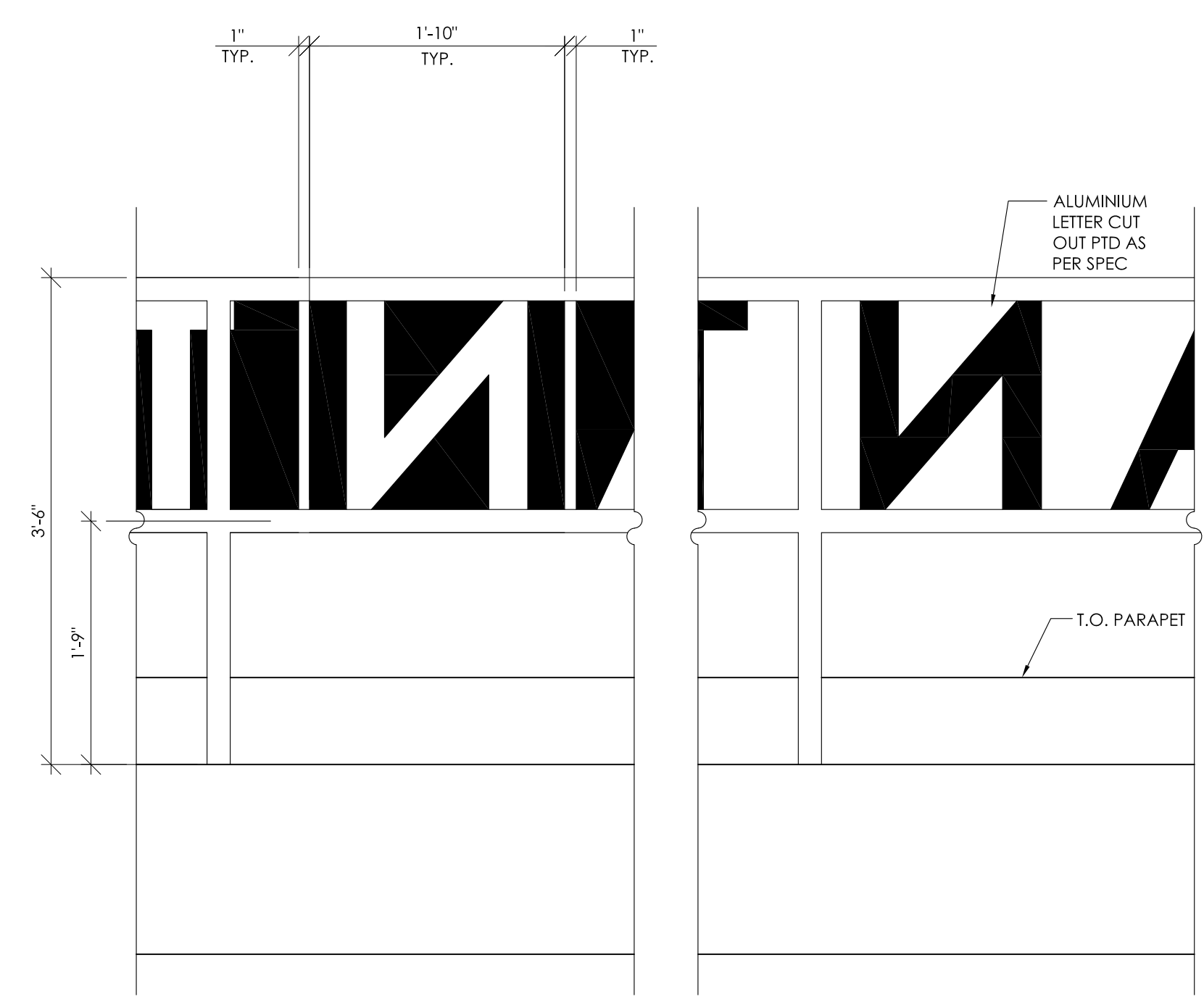
2 SOUTH ELEVATION
1/4" = 1'-0"



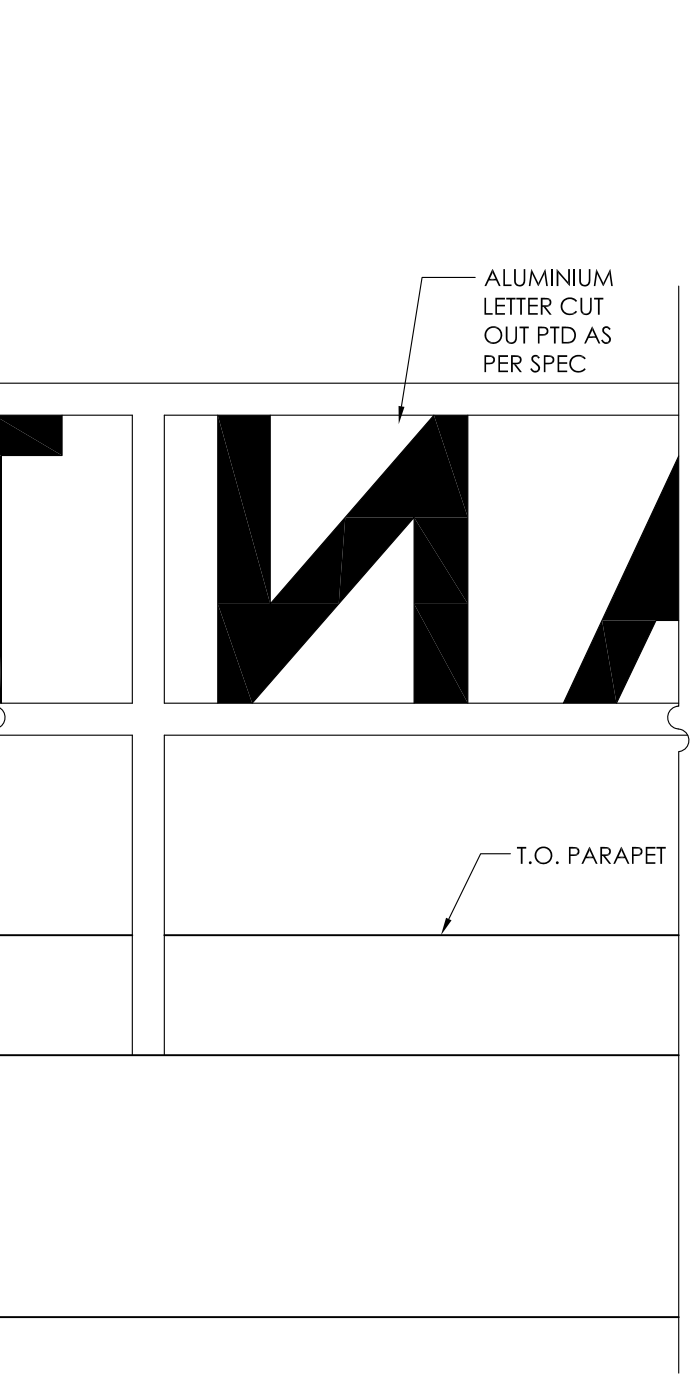
3 TYP LETTER FROM FRONT
1" = 1'-0"



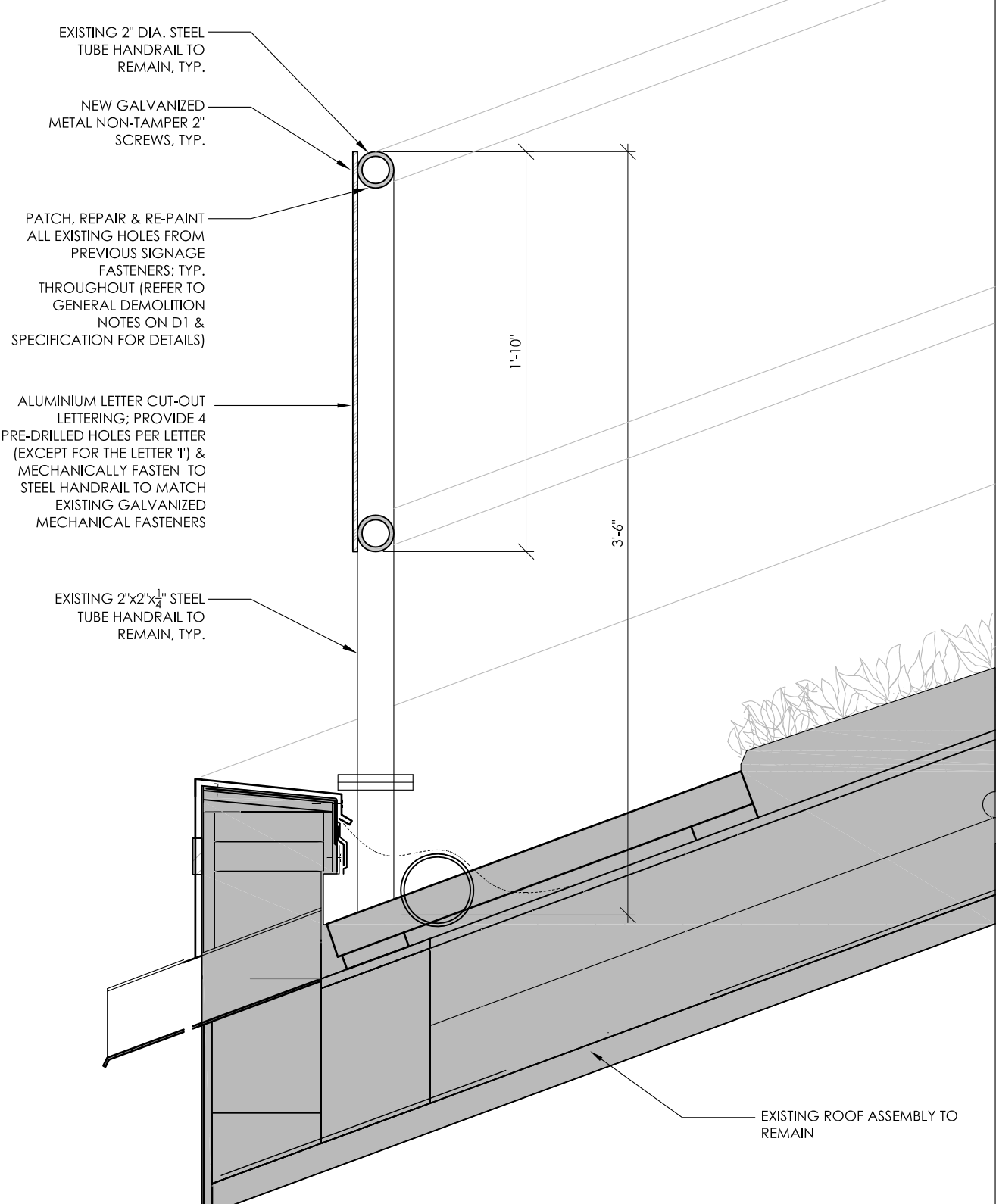
4 TYP LETTER CUT OUT FRONT
1" = 1'-0"



5 TYP LETTER CUT OUT FROM BACK
1" = 1'-0"



6 TYPICAL LETTER FROM BACK
1" = 1'-0"



7 TYP CONNECTION
1-1/2" = 1'-0"