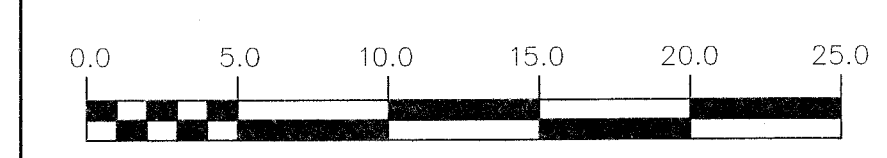
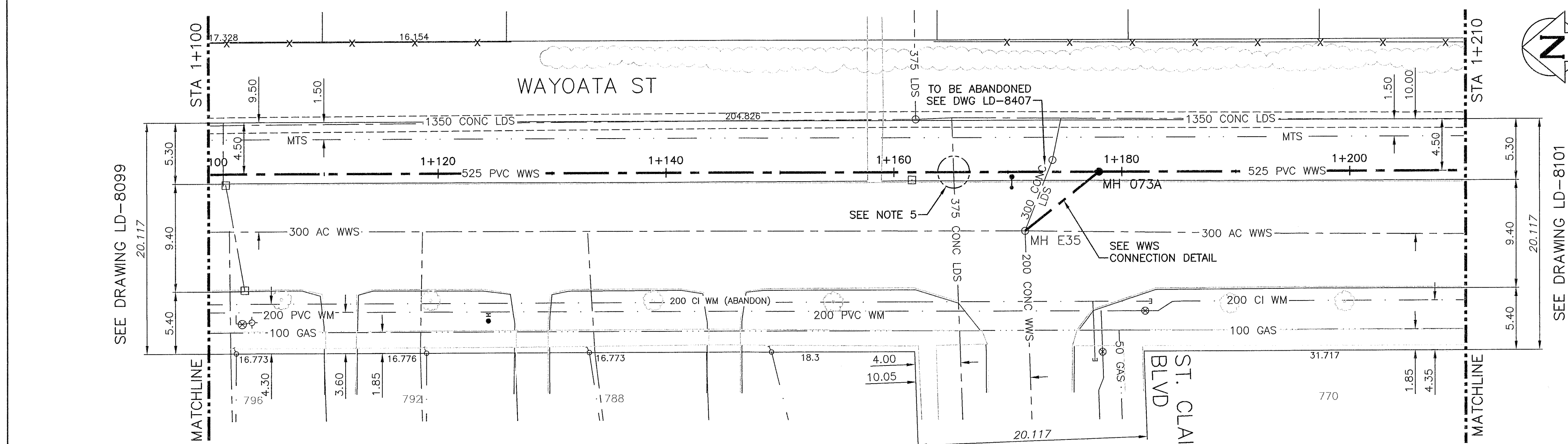


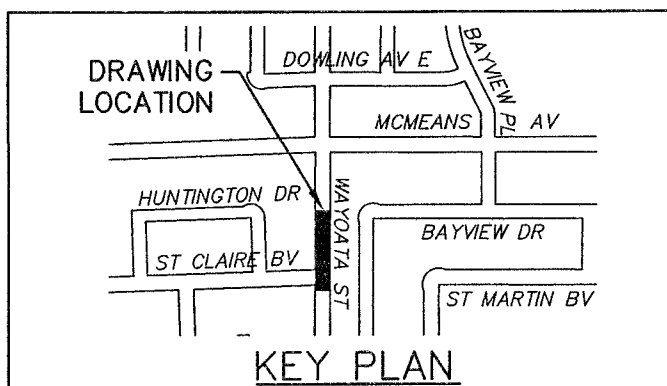
NOTE: CHAINAGES SHOWN ARE ALONG CL OF PROPOSED PIPE

WARNING
 IF POWER EQUIPMENT OR EXPLOSIVES ARE TO BE USED FOR EXCAVATION ON THIS PROJECT THE CONTRACTOR MUST:
 1) NOTIFY THE GAS COMPANY OF THE PROPOSED LOCATION OF EXCAVATION.
 2) TAKE PRECAUTION TO AVOID DAMAGE TO GAS COMPANY INSTALLATIONS.
 SEE PROVINCIAL REGULATION 210/72 FOR DETAILS

- CONSTRUCTION NOTES:**
- SEWER AND WATER SERVICES SHOWN ON DRAWING ARE APPROXIMATE ONLY.
 - LOCATION OF ALL SEWER AND WATER LINES TO BE CONFIRMED IN FIELD.
 - INSTALL NEW SEWER BY TRENCHLESS METHODS, UNLESS OTHERWISE NOTED.
 - FRONT ACCESS TO ALL WAYOATA STREET PROPERTIES TO BE MAINTAIN AT ALL TIMES DURING CONSTRUCTION PERIOD.
 - CONFIRMATION OF DEPTH OF EXISTING 375 LDS AT POINT OF CROSSING WITH NEW 525 WWS TO BE DETERMINED PRIOR TO ANY INSTALLATION WORKS COMMENCEMENT.



APEGM
 Certificate of Authorization
 CH2M HILL Canada Ltd.
 No. 1441



200 WM	WATERMAIN	200 WM	SL, HYDRO	150 WM	WATERMAIN	150 WM
⊕	HYDRANT	⊕	MTS	⊕	HYDRANT	⊕
⊕	VALVE	⊕	TRAFFIC SIGNALS	⊕	VALVE	⊕
---	525 LDS LAND DRAINAGE SEWER	---	GAS	---	50 GAS	---
---	375 WWS WASTEWATER SEWER	---	SURVEY BAR	---	250 WWS	---
○	MANHOLE	○	FENCE	○	200 CI WM (ABANDON)	○
□	CATCH BASIN	□	POLE - HYDRO, MTS	□	200 PVC WM	□
▽	CURB INLET	▽	CURB STOP	▽	200 CI WM	▽
+	JUNCTIONS	+	GUY ANCHOR	+	100 GAS	+
⊔	CULVERT	⊔	LIGHT STANDARD	⊔	200 CI WM	⊔
⊔	ANODE	⊔	TREE	⊔	200 CI WM	⊔
---	EXISTING	---	LEGEND-PLAN	---	EXISTING	---
---	LEGEND-PLAN	---	PROPOSED	---	LEGEND-PROFILE	---

LOCATION APPROVED UNDERGROUND STRUCTURES

SUPV. U/G STRUCTURES COMMITTEE DATE

NOTE:
 LOCATION OF UNDERGROUND STRUCTURES AS SHOWN ARE BASED ON THE BEST INFORMATION AVAILABLE BUT NO GUARANTEE IS GIVEN THAT ALL EXISTING UTILITIES ARE SHOWN OR THAT THE GIVEN LOCATIONS ARE EXACT. CONFIRMATION OF EXISTENCE AND EXACT LOCATION OF ALL SERVICES MUST BE OBTAINED FROM THE INDIVIDUAL UTILITIES BEFORE PROCEEDING WITH CONSTRUCTION.

R.M. ELEV.	CONSTRUCTION COMPLETION DATE: YYYY MM DD
DESIGNED BY: MAF	CHECKED BY: MD
DRAWN BY: JBC	APPROVED BY: <i>E. Sharp</i>
SCALE: HORIZONTAL 1:250	RELEASED FOR CONSTRUCTION: <i>R. J.</i>
VERTICAL 1:50	DATE: 2017 3/17
0 ISSUED FOR TENDER 11/17 JBC	DATE
NO. REVISIONS	DATE BY

ENGINEER'S SEAL
 PROVINCE OF MANITOBA
S. D. GODON
 Member 25524
 REGISTERED PROFESSIONAL ENGINEER

THE CITY OF WINNIPEG
 WATER AND WASTE DEPARTMENT
 ENGINEERING DIVISION

TRANSCONA SEWER RELIEF WORKS
 CONTRACT NO. 4
 WAYOATA STREET
 FROM STA 1+100 TO 1+210

SHEET 5 OF 19
 CITY DRAWING NUMBER
 LD-8100