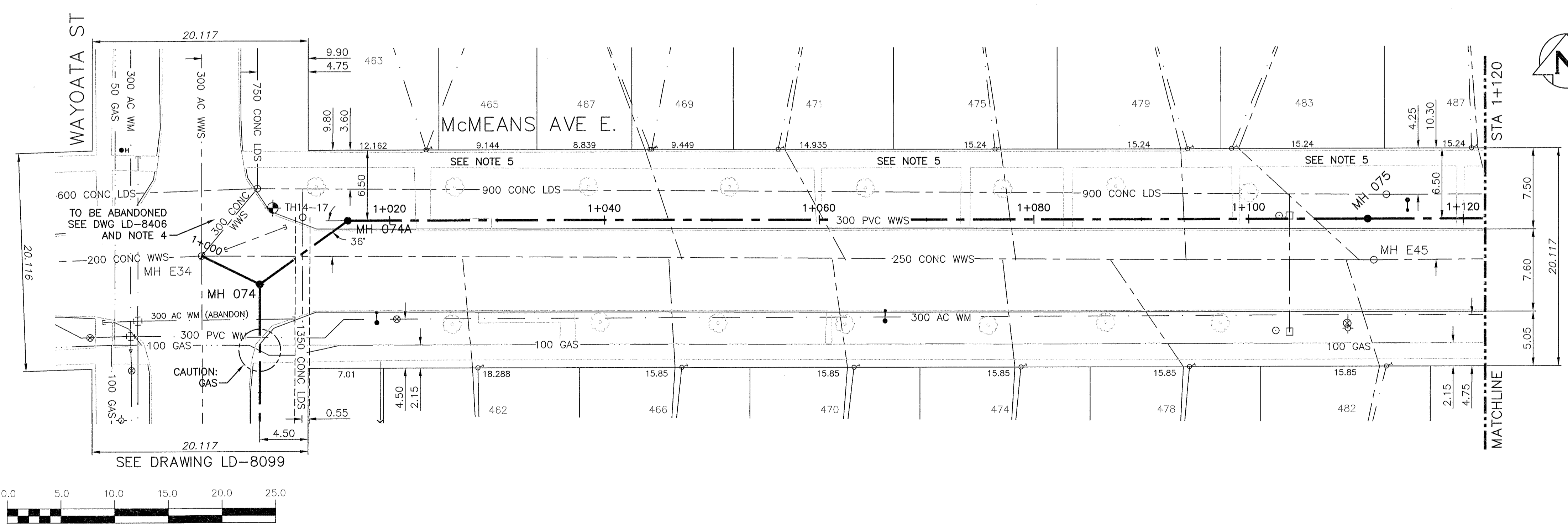


NOTE: CHAINAGES SHOWN ARE ALONG CL OF PROPOSED PIPE



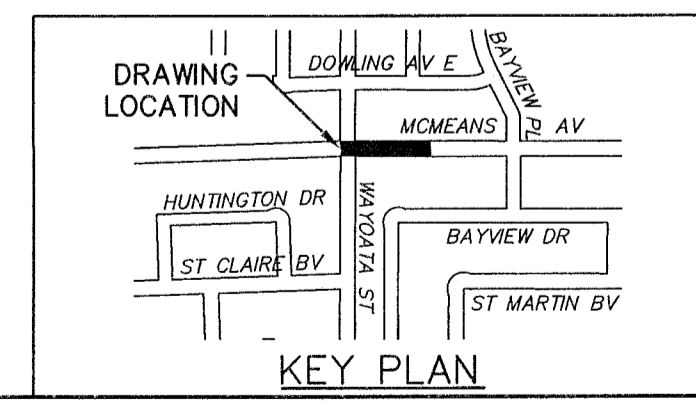
WARNING
 IF POWER EQUIPMENT OR EXPLOSIVES ARE TO BE USED FOR EXCAVATION ON THIS PROJECT THE CONTRACTOR MUST:
 1) NOTIFY THE GAS COMPANY OF THE PROPOSED LOCATION OF EXCAVATION.
 2) TAKE PRECAUTION TO AVOID DAMAGE TO GAS COMPANY INSTALLATIONS.
 SEE PROVINCIAL REGULATION 210/72 FOR DETAILS

- CONSTRUCTION NOTES:**
- SEWER AND WATER SERVICES SHOWN ON DRAWING ARE APPROXIMATE ONLY.
 - LOCATION OF ALL SEWER AND WATER LINES TO BE CONFIRMED IN FIELD.
 - INSTALL NEW SEWER BY TRENCHLESS METHODS, UNLESS OTHERWISE NOTED.
 - EXISTING CROSS CONNECTION COMPRISING OF FLAP AND SLUICE GATES BETWEEN WWS AND LDS SYSTEMS TO BE INVESTIGATED. THE SALVAGE POTENTIAL TO BE PROVIDED TO THE CONTRACT ADMINISTRATOR PRIOR TO REMOVAL AS PER SPECIFICATIONS.
 - EXISTING SERVICE CONNECTIONS (FROM NORTH ONLY) THAT ARE FOUND TO BE IN DIRECT CONFLICT WITH THE NEW RELIEF SEWER ARE TO BE RECONNECTED TO NEW 300 WWS PIPE. THE EXISTING SERVICES ARE TO BE PLUGGED/ABANDONED AS PER CITY OF WINNIPEG STANDARD SPECIFICATIONS. THE CONTRACTOR IS RESPONSIBLE TO CONFIRM ALIGNMENT AND DEPTH OF EXISTING SERVICES PRIOR TO INSTALLATION OF NEW 300 WWS RELIEF PIPE.

SEWER JUNCTION INFORMATION FROM SEWER VIDEO INSPECTION

DISTANCE FROM MH ID E45	DIAMETER	CLOCK
1.3	150	1
17.3	150	1
33.4	150	2
55.7	150	2
64.0	150	1
69.6	150	2
89.2	150	2

ALL EXISTING LIVE SEWER SERVICES FOUND TO BE IN CONFLICT, TO BE RENEWED ONLY OVER 1m FROM NEW 300 WWS. REFER TO SPECIFICATION CLAUSE E27 FOR FULL RENEWAL/ABANDONMENT DETAILS



EXISTING	LEGEND-PLAN	PROPOSED	EXISTING	LEGEND-PLAN	PROPOSED	EXISTING	LEGEND-PROFILE	PROPOSED
200 WM	WATERMAIN	200 WM	SL, HYDRO	150 WM	WATERMAIN	150 WM	WATERMAIN	150 WM
525 LDS	LAND DRAINAGE SEWER	525 LDS	MTS	50 GAS	300 LDS	LAND DRAINAGE SEWER	300 LDS	300 LDS
375 WWS	WASTEWATER SEWER	375 WWS	TRAFFIC SIGNALS	50 GAS	250 WWS	WASTEWATER SEWER	250 WWS	250 WWS
○	MANHOLE	●	SURVEY BAR	○	○	○	○	○
□	CATCH BASIN	■	FENCE	○	○	○	○	○
▽	CURB INLET	▼	POLE - HYDRO, MTS	○	○	○	○	○
┌─┐	JUNCTIONS	┌─┐	CURB STOP	○	○	○	○	○
└─┘	CULVERT	└─┘	GUY ANCHOR	○	○	○	○	○
○	ANODE	○	LIGHT STANDARD	○	○	○	○	○
○	ANODE	○	TREE	○	○	○	○	○

LOCATION APPROVED UNDERGROUND STRUCTURES	B.M. ELEV.	CONSTRUCTION COMPLETION DATE: YYYY MM DD
SUPV. U/G STRUCTURES COMMITTEE	DATE	
NOTE: LOCATION OF UNDERGROUND STRUCTURES AS SHOWN ARE BASED ON THE BEST INFORMATION AVAILABLE BUT NO GUARANTEE IS GIVEN THAT ALL EXISTING UTILITIES ARE SHOWN OR THAT THE GIVEN LOCATIONS ARE EXACT. CONFIRMATION OF EXISTENCE AND EXACT LOCATION OF ALL SERVICES MUST BE OBTAINED FROM THE INDIVIDUAL UTILITIES BEFORE PROCEEDING WITH CONSTRUCTION.		

DESIGNED BY: MAF	CHECKED BY: MD
DRAWN BY: JBC	APPROVED BY: [Signature]
SCALE: HORIZONTAL 1:250 VERTICAL 1:50	RELEASED FOR CONSTRUCTION: [Signature]
ISSUED FOR TENDER: 11/17 JBC	DATE: 2017 11 02



THE CITY OF WINNIPEG
 WATER AND WASTE DEPARTMENT
 ENGINEERING DIVISION

TRANSCONA SEWER RELIEF WORKS
 CONTRACT NO. 4
 McMEANS AVENUE E.
 FROM STA 1+000 TO 1+120

SHEET 9 OF 19
 CITY DRAWING NUMBER
 LD-8104