

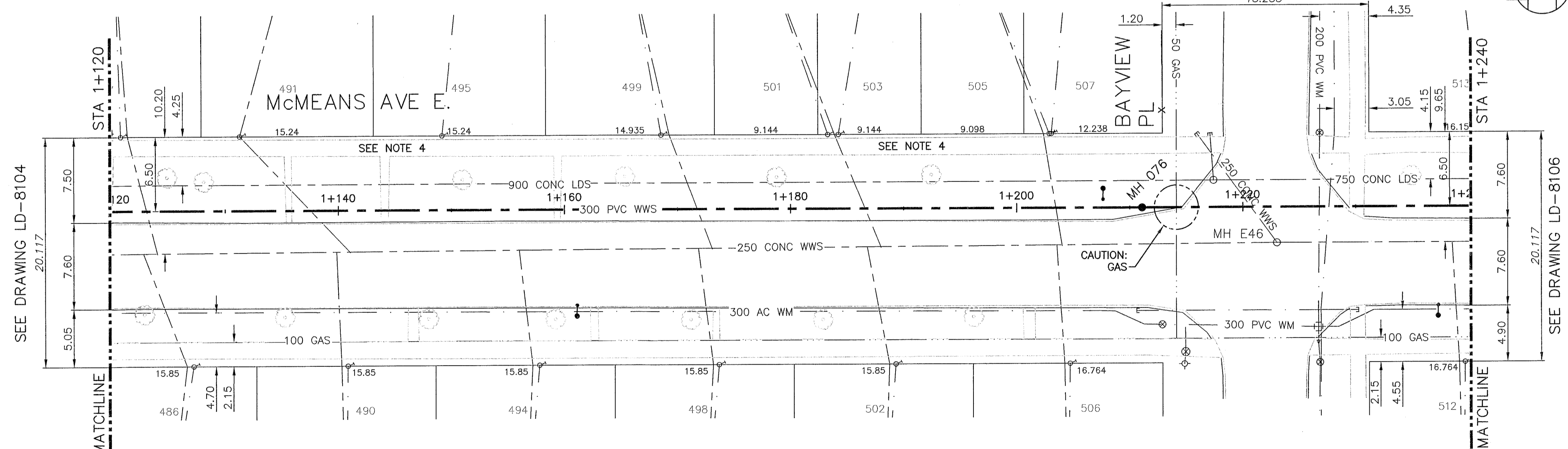
NOTE: CHAINAGES SHOWN ARE ALONG CL OF PROPOSED PIPE

WARNING
 IF POWER EQUIPMENT OR EXPLOSIVES ARE TO BE USED FOR EXCAVATION ON THIS PROJECT THE CONTRACTOR MUST:
 1) NOTIFY THE GAS COMPANY OF THE PROPOSED LOCATION OF EXCAVATION.
 2) TAKE PRECAUTION TO AVOID DAMAGE TO GAS COMPANY INSTALLATIONS.
 SEE PROVINCIAL REGULATION 210/72 FOR DETAILS.

- CONSTRUCTION NOTES:**
- SEWER AND WATER SERVICES SHOWN ON DRAWING ARE APPROXIMATE ONLY.
 - LOCATION OF ALL SEWER AND WATER LINES TO BE CONFIRMED IN FIELD.
 - INSTALL NEW SEWER BY TRENCHLESS METHODS, UNLESS OTHERWISE NOTED.
 - EXISTING SERVICE CONNECTIONS (FROM NORTH ONLY) THAT ARE FOUND TO BE IN DIRECT CONFLICT WITH THE NEW RELIEF SEWER ARE TO BE RECONNECTED TO NEW 300 WWS PIPE. THE EXISTING SERVICES ARE TO BE PLUGGED/ABANDONED AS PER CITY OF WINNIPEG STANDARD SPECIFICATIONS. THE CONTRACTOR IS RESPONSIBLE TO CONFIRM ALIGNMENT AND DEPTH OF EXISTING SERVICES PRIOR TO INSTALLATION OF NEW 300 WWS RELIEF PIPE.

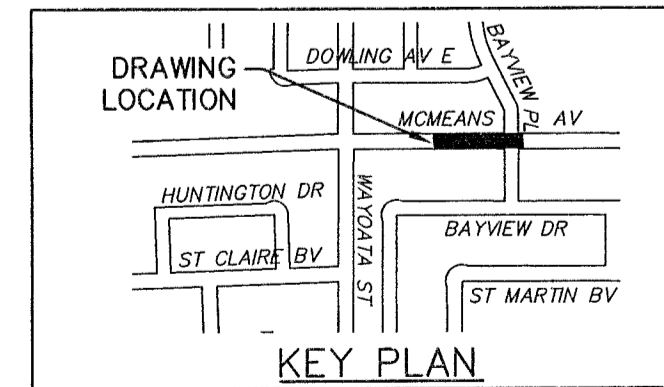
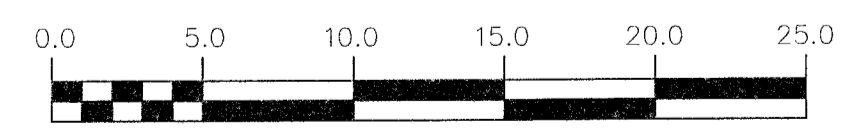
SEWER JUNCTION INFORMATION FROM SEWER VIDEO INSPECTION		
DISTANCE FROM MH ID E46	DIAMETER	CLOCK
19.9	150	2
34.0	150	2
40.2	150	2
43.7	150	1
48.7	150	1
55.1	150	1
73.7	150	1
80.6	150	1
92.1	150	1
102.8	150	2

ALL EXISTING LIVE SEWER SERVICES FOUND TO BE IN CONFLICT, TO BE RENEWED ONLY OVER 1m FROM NEW 300 WWS. REFER TO SPECIFICATION CLAUSE E27 FOR FULL RENEWAL/ABANDONMENT DETAILS



SEE DRAWING LD-8104

SEE DRAWING LD-8106



200 WM	WATERMAIN	200 WM	SL, HYDRO	150 WM	WATERMAIN	150 WM
⊕	HYDRANT	⊕	MTS	⊕	HYDRANT	⊕
⊕	VALVE	⊕	TRAFFIC SIGNALS	⊕	VALVE	⊕
525 LDS	LAND DRAINAGE SEWER	525 LDS	GAS	50 GAS	300 LDS	LAND DRAINAGE SEWER
375 WWS	WASTEWATER SEWER	375 WWS	SURVEY BAR	250 WWS	250 WWS	WASTEWATER SEWER
○	MANHOLE	●	FENCE	⊕	⊕	PROFILE
□	CATCH BASIN	□	POLE - HYDRO, MTS	⊕	⊕	GROUND ABOVE PIPE
▽	CURB INLET	▽	CURB STOP	⊕	⊕	
⊕	JUNCTIONS	⊕	GUY ANCHOR	⊕	⊕	
⊕	CULVERT	⊕	LIGHT STANDARD	⊕	⊕	
⊕	ANODE	⊕	TREE	⊕	⊕	
EXISTING	LEGEND-PLAN	PROPOSED	EXISTING	LEGEND-PLAN	PROPOSED	EXISTING

LOCATION APPROVED UNDERGROUND STRUCTURES		B.M. ELEV.
CONSTRUCTION COMPLETION DATE: YYYY MM DD		
DESIGNED BY: MAF	CHECKED BY: MD	
DRAWN BY: JBC	APPROVED BY: [Signature]	
SCALE: HORIZONTAL 1:250	RELEASED FOR CONSTRUCTION: [Signature]	
VERTICAL 1:50	DATE: 11/17/17	
0 ISSUED FOR TENDER	11/17	JBC
NO.	REVISIONS	DATE

ch2m

ENGINEER'S SEAL 11-02-17

PROVINCE OF MANITOBA REGISTERED PROFESSIONAL ENGINEER

U.S.B. GORDON Member 25524

CONSULTANT DRAWING NUMBER C-251

DESIGNED BY: MAF
 CHECKED BY: MD
 DRAWN BY: JBC
 APPROVED BY: [Signature]
 SCALE: HORIZONTAL 1:250
 VERTICAL 1:50
 RELEASED FOR CONSTRUCTION: [Signature]
 DATE: 11/17/17

THE CITY OF WINNIPEG
 WATER AND WASTE DEPARTMENT
 ENGINEERING DIVISION

TRANSCONA SEWER RELIEF WORKS
 CONTRACT NO. 4
 McMEANS AVENUE E.
 FROM STA 1+120 TO 1+240

SHEET 10 OF 19
 CITY DRAWING NUMBER LD-8105

FILE PATH: C:\pwworkdir\den001\fortez\11184428\ FILE NAME: C-251.dwg