

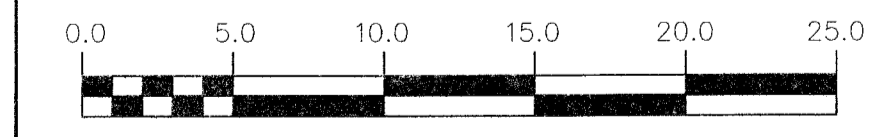
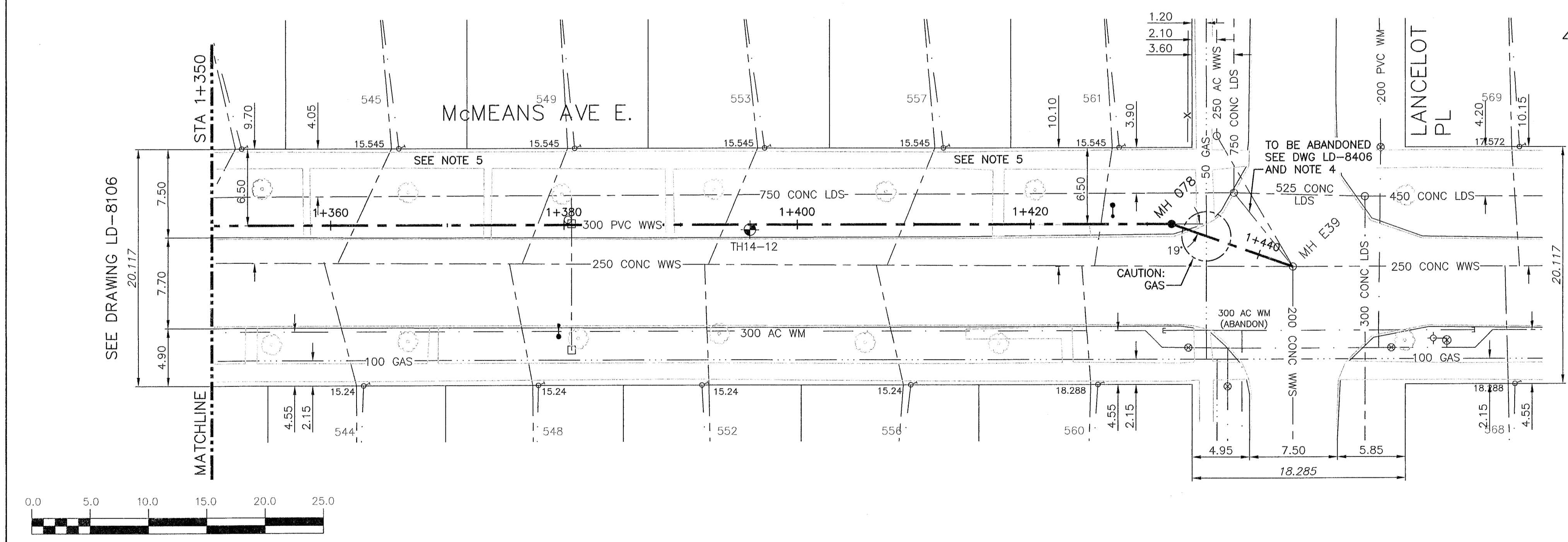
NOTE: CHAINAGES SHOWN ARE ALONG CL OF PROPOSED PIPE

WARNING
 IF POWER EQUIPMENT OR EXPLOSIVES ARE TO BE USED FOR EXCAVATION ON THIS PROJECT THE CONTRACTOR MUST:
 1) NOTIFY THE GAS COMPANY OF THE PROPOSED LOCATION OF EXCAVATION.
 2) TAKE PRECAUTION TO AVOID DAMAGE TO GAS COMPANY INSTALLATIONS.
 SEE PROVINCIAL REGULATION 210/72 FOR DETAILS

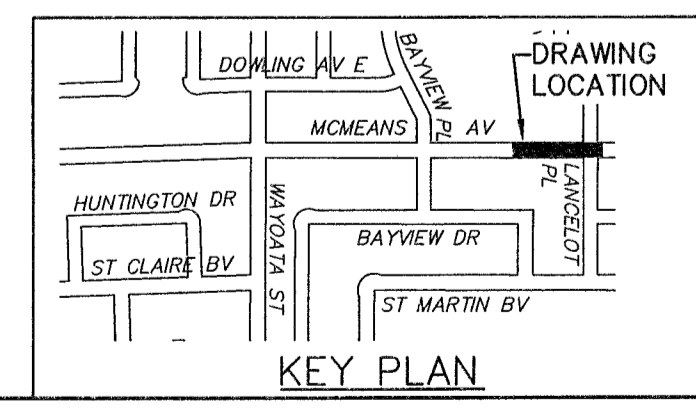
- CONSTRUCTION NOTES:**
- SEWER AND WATER SERVICES SHOWN ON DRAWING ARE APPROXIMATE ONLY.
 - LOCATION OF ALL SEWER AND WATER LINES TO BE CONFIRMED IN FIELD.
 - INSTALL NEW SEWER BY TRENCHLESS METHODS, UNLESS OTHERWISE NOTED.
 - EXISTING CROSS CONNECTION COMPRISING OF FLAP AND SLUICE GATES BETWEEN WWS AND LDS SYSTEMS TO BE INVESTIGATED. THE SALVAGE POTENTIAL TO BE PROVIDED TO THE CONTRACT ADMINISTRATOR PRIOR TO REMOVAL AS PER SPECIFICATIONS.
 - EXISTING SERVICE CONNECTIONS (FROM NORTH ONLY) THAT ARE FOUND TO BE IN DIRECT CONFLICT WITH THE NEW RELIEF SEWER ARE TO BE RECONNECTED TO NEW 300 WWS PIPE. THE EXISTING SERVICES ARE TO BE PLUGGED/ABANDONED AS PER CITY OF WINNIPEG STANDARD SPECIFICATIONS. THE CONTRACTOR IS RESPONSIBLE TO CONFIRM ALIGNMENT AND DEPTH OF EXISTING SERVICES PRIOR TO INSTALLATION OF NEW 300 WWS RELIEF PIPE.

SEWER JUNCTION INFORMATION FROM SEWER VIDEO INSPECTION		
DISTANCE FROM MH ID E39	DIAMETER	CLOCK
17.1	100	1
34.3	100	2
50.1	100	2
65.3	100	2
80.5	100	1
95.2	100	2

ALL EXISTING LIVE SEWER SERVICES FOUND TO BE IN CONFLICT, TO BE RENEWED ONLY OVER 1m FROM NEW 300 WWS. REFER TO SPECIFICATION CLAUSE E27 FOR FULL RENEWAL/ABANDONMENT DETAILS



APEGM
 Certificate of Authorization
 CH2M HILL Canada Ltd.
 No. 1441



200 WM	WATERMAIN	200 WM	SL, HYDRO	150 WM	WATERMAIN	150 WM
⊕	HYDRANT	⊕	MTS	⊕	HYDRANT	⊕
⊕	VALVE	⊕	TRAFFIC SIGNALS	⊕	VALVE	⊕
525 LDS	LAND DRAINAGE SEWER	525 LDS	GAS	50 GAS	300 LDS	LAND DRAINAGE SEWER
375 WWS	WASTEWATER SEWER	375 WWS	SURVEY BAR	250 WWS	250 WWS	WASTEWATER SEWER
○	MANHOLE	●	FENCE	⊕	⊕	PROFILE
□	CATCH BASIN	⊕	POLE - HYDRO, MTS	⊕	⊕	GROUND ABOVE PIPE
▽	CURB INLET	⊕	CURB STOP	⊕	⊕	
⊕	JUNCTIONS	⊕	GUY ANCHOR	⊕	⊕	
⊕	CULVERT	⊕	LIGHT STANDARD	⊕	⊕	
⊕	ANODE	⊕	TREE	⊕	⊕	
EXISTING	LEGEND-PLAN	PROPOSED	EXISTING	LEGEND-PLAN	PROPOSED	EXISTING
EXISTING	LEGEND-PROFILE	PROPOSED	EXISTING	LEGEND-PROFILE	PROPOSED	EXISTING

LOCATION APPROVED UNDERGROUND STRUCTURES

SUPV. U/G STRUCTURES COMMITTEE DATE

NOTE:
 LOCATION OF UNDERGROUND STRUCTURES AS SHOWN ARE BASED ON THE BEST INFORMATION AVAILABLE BUT NO GUARANTEE IS GIVEN THAT ALL EXISTING UTILITIES ARE SHOWN OR THAT THE GIVEN LOCATIONS ARE EXACT. CONFIRMATION OF EXISTENCE AND EXACT LOCATION OF ALL SERVICES MUST BE OBTAINED FROM THE INDIVIDUAL UTILITIES BEFORE PROCEEDING WITH CONSTRUCTION.

B.M. ELEV. _____

CONSTRUCTION COMPLETION DATE: YYYY MM DD

ch2m

DESIGNED BY: MAF
 CHECKED BY: MD
 DRAWN BY: JBC
 APPROVED BY: [Signature]
 SCALE: HORIZONTAL 1:250
 VERTICAL 1:50
 RELEASED FOR CONSTRUCTION: [Signature]
 DATE: NOV 21 2017



THE CITY OF WINNIPEG
 WATER AND WASTE DEPARTMENT
 ENGINEERING DIVISION

TRANSCONA SEWER RELIEF WORKS
 CONTRACT NO. 4
 McMEANS AVENUE E.
 FROM STA 1+350 TO
 LANCELOT PL

SHEET 12 OF 19
 CITY DRAWING NUMBER
 LD-8107

CONSULTANT DRAWING NUMBER
 C-253

FILE PATH: C:\pwworkdir\den001\cortez\1\1184428\ FILE NAME: C-253.dwg