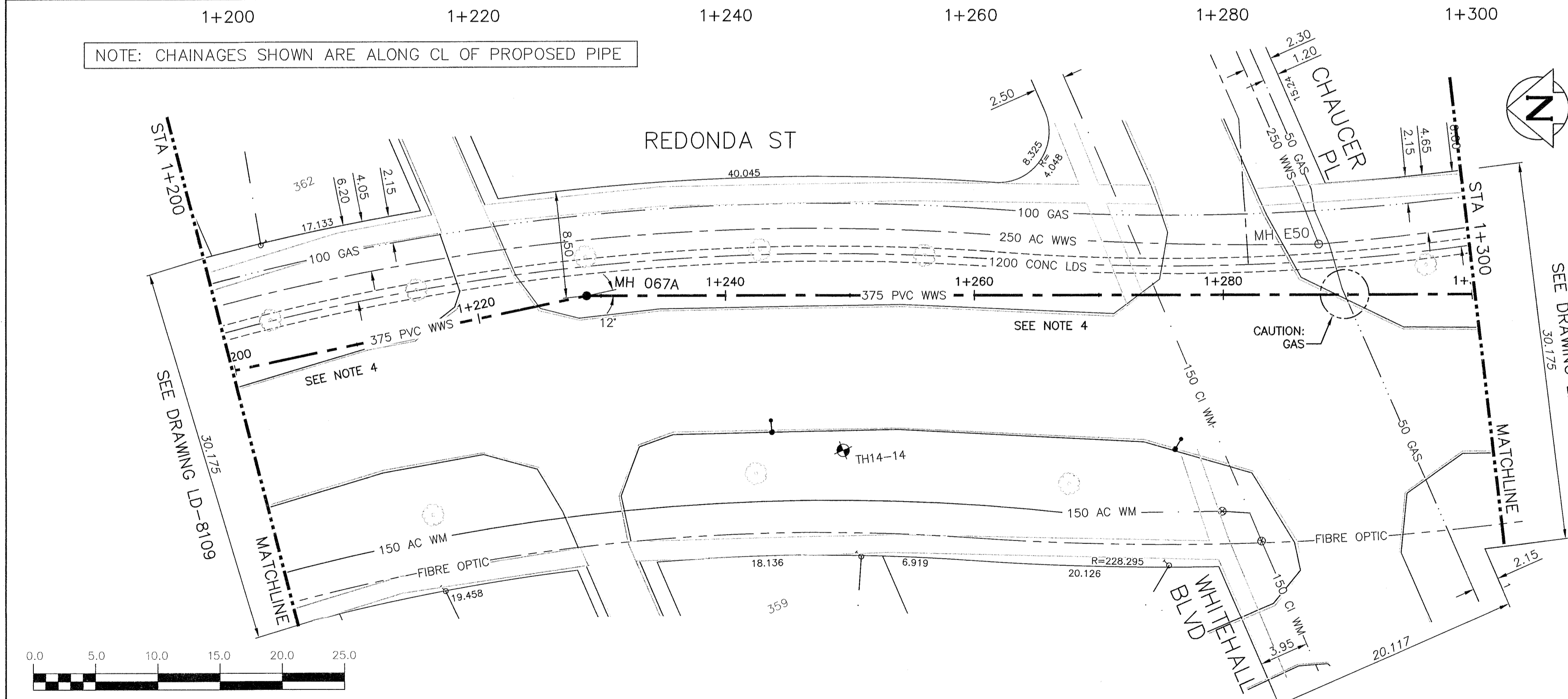


NOTE: CHAINAGES SHOWN ARE ALONG CL OF PROPOSED PIPE



SEWER JUNCTION INFORMATION FROM SEWER VIDEO INSPECTION		
DISTANCE FROM MH ID E49*		
DISTANCE	DIAMETER	CLOCK
18.1	150	1
58.4	150	1
76.3	150	1

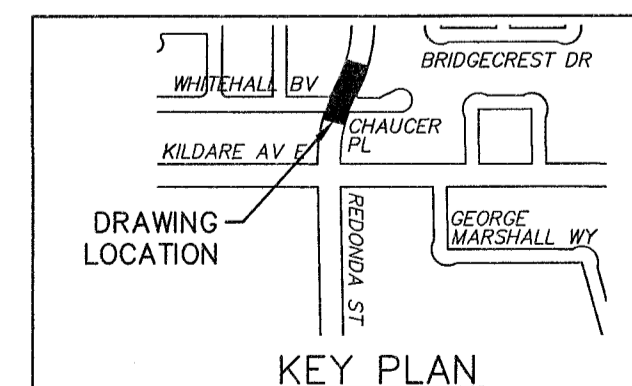
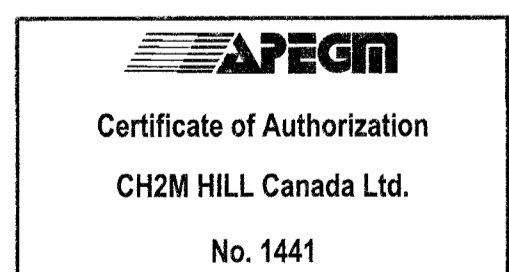
* SEE DWG C-255 FOR MH E49 LOCATION

ALL EXISTING LIVE SEWER SERVICES FOUND TO BE IN CONFLICT. TO BE RENEWED ONLY OVER 1m FROM NEW 375 WWS. REFER TO SPECIFICATION CLAUSE E27 FOR FULL RENEWAL/ABANDONMENT DETAILS

WARNING
 IF POWER EQUIPMENT OR EXPLOSIVES ARE TO BE USED FOR EXCAVATION ON THIS PROJECT THE CONTRACTOR MUST:
 1) NOTIFY THE GAS COMPANY OF THE PROPOSED LOCATION OF EXCAVATION.
 2) TAKE PRECAUTION TO AVOID DAMAGE TO GAS COMPANY INSTALLATIONS.
 SEE PROVINCIAL REGULATION 210/72 FOR DETAILS

CONSTRUCTION NOTES:

- SEWER AND WATER SERVICES SHOWN ON DRAWING ARE APPROXIMATE ONLY.
- LOCATION OF ALL SEWER AND WATER LINES TO BE CONFIRMED IN FIELD.
- INSTALL NEW SEWER BY TRENCHLESS METHODS, UNLESS OTHERWISE NOTED.
- EXISTING SERVICE CONNECTIONS (FROM WEST ONLY) THAT ARE FOUND TO BE IN DIRECT CONFLICT WITH THE NEW RELIEF SEWER ARE TO BE RECONNECTED TO NEW 375 WWS PIPE. THE EXISTING SERVICES ARE TO BE PLUGGED/ABANDONED AS PER CITY OF WINNIPEG STANDARD SPECIFICATIONS. THE CONTRACTOR IS RESPONSIBLE TO CONFIRM ALIGNMENT AND DEPTH OF EXISTING SERVICES PRIOR TO INSTALLATION OF NEW 375 WWS RELIEF PIPE.



200 WM	WATERMAIN	200 WM	SL, HYDRO	150 WM	WATERMAIN	150 WM
⊕	HYDRANT	⊕	MTS	⊕	HYDRANT	⊕
⊕	VALVE	⊕	TRAFFIC SIGNALS	⊕	VALVE	⊕
525 LDS	LAND DRAINAGE SEWER	525 LDS	GAS	50 GAS	300 LDS	LAND DRAINAGE SEWER
375 WWS	WASTEWATER SEWER	375 WWS	SURVEY BAR	250 WWS	250 WWS	WASTEWATER SEWER
○	MANHOLE	●	FENCE	×	○	PROFILE
□	CATCH BASIN	■	POLE - HYDRO, MTS	⊕	⊕	GROUND ABOVE PIPE
▽	CURB INLET	▽	CURB STOP	⊕	⊕	
⊕	JUNCTIONS	⊕	GUY ANCHOR	⊕	⊕	
⊕	CULVERT	⊕	LIGHT STANDARD	⊕	⊕	
⊕	ANODE	⊕	TREE	⊕	⊕	
EXISTING	LEGEND-PLAN	PROPOSED	EXISTING	LEGEND-PLAN	PROPOSED	EXISTING

LOCATION APPROVED UNDERGROUND STRUCTURES		B.M. ELEV.
CONSTRUCTION COMPLETION DATE: YYYY MM DD		
DESIGNED BY: MAF	CHECKED BY: MD	
DRAWN BY: JBC	APPROVED BY: [Signature]	
SCALE: HORIZONTAL 1:250	RELEASED FOR CONSTRUCTION: [Signature]	
VERTICAL 1:50	DATE: Nov 9/17	
0 ISSUED FOR TENDER	11/17	JBC
NO. REVISIONS	DATE	BY

ch2m

ENGINEER'S SEAL: 11-01-17
 PROVINCE OF MANITOBA
 G. GODON
 Member 25524
 REGISTERED PROFESSIONAL ENGINEER

CONSULTANT DRAWING NUMBER: C-256

THE CITY OF WINNIPEG
 WATER AND WASTE DEPARTMENT
 ENGINEERING DIVISION

TRANSCONA SEWER RELIEF WORKS
 CONTRACT NO. 4
 REDONDA STREET
 FROM STA 1+200 TO 1+300

SHEET 15 OF 19
 CITY DRAWING NUMBER: LD-8404