

SEAM ELEVATION AND MATERIAL REQUIREMENTS

MODEL 1663-32

SEAM #	ELEVATION	QTY	ARMS/LEGS	CONNECTION PLATE	PLATE	PLATE
			PART #	PART #	LOCATION	ROTATION
EXIT	3"	NA	NA	NA	NA	NA
1	6-3/16"	2	PTG2-0355	PTG2-0922	UPHILL	BDC
2	13-1/2"	2	PTG2-0937	PTG2-0922	UPHILL	BDC
3	39-1/8"	2	PTG4-AR032	PTG2-0922	UPHILL	BDC
4	72-7/16"	2	PTG4-AR066	PTG2-0922	UPHILL	BDC
5	98-3/4"	NA	NA	NA	NA	NA
PANEL	100"	NA	NA	NA	NA	NA

NOTE: ELEVATION IS TO INSIDE OF FLUME @ RIDE PATH



PTG2-0922

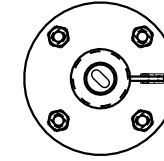
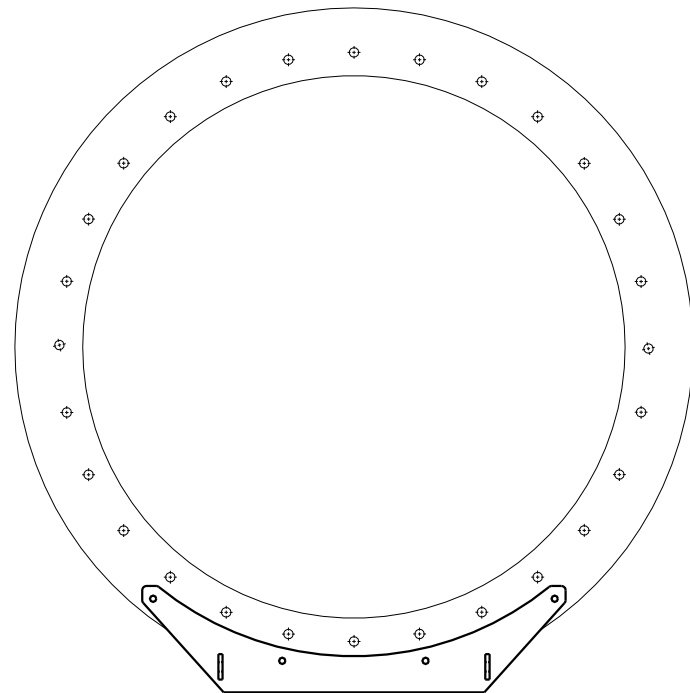
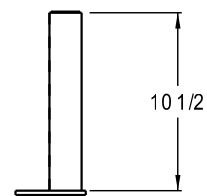


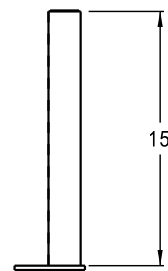
PLATE ROTATION



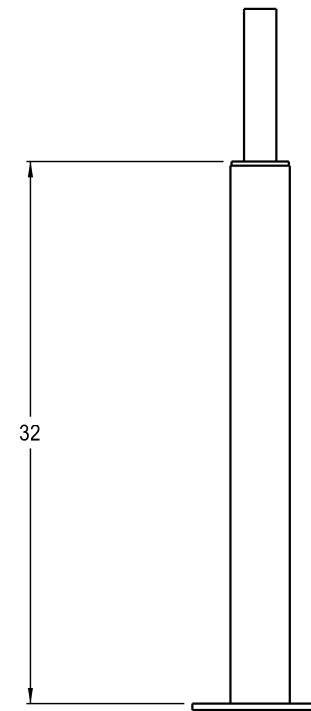
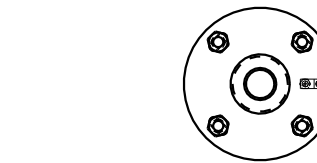
BDC



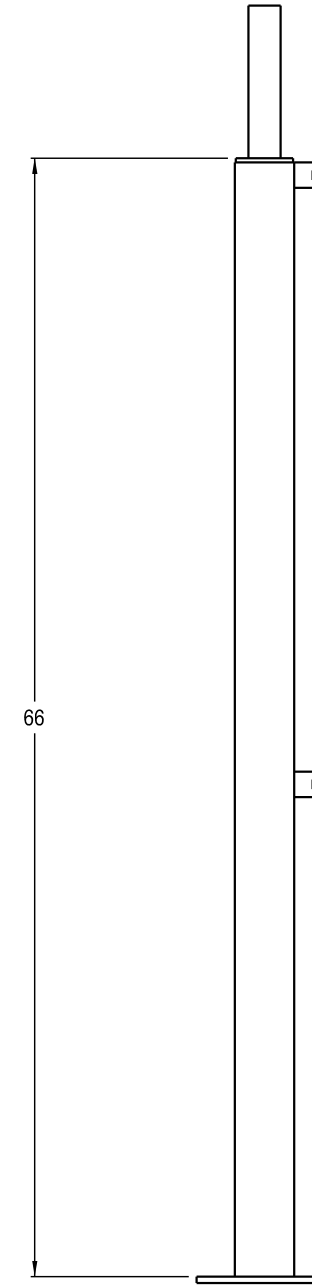
PTG2-0355



PTG2-0937



"A" LEG  
PTG4-AR032



"A" LEG  
PTG4-AR066

Natural Structures

PO Box 270  
Baker City, OR 97814  
Phone: (541) 523-0224  
Fax (541) 523-0231

INSTALL SEAM ELEVATION CHART

DRAWN BY: TB  
REVIEWED BY:  
DATE: 04/05/2016  
ANSI SHEET SIZE: B

REVISION / DATE

PAGE SCALE: 1" = 1'

PAGE: