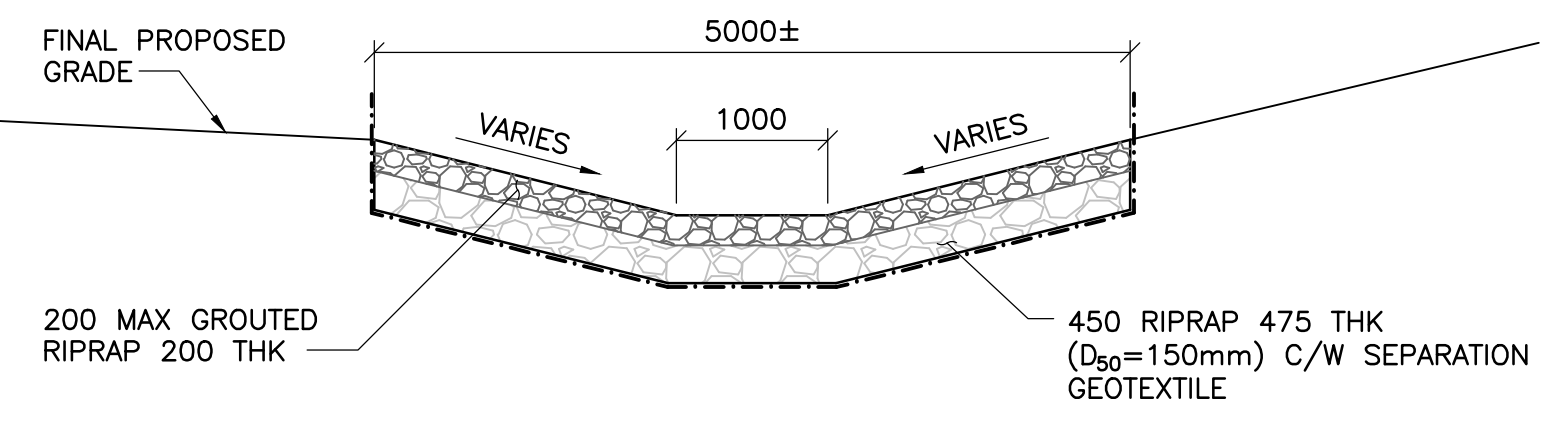


NOTE:

FLOATING TURBIDITY BARRIER ALSO REQUIRED UPSTREAM NATURAL WEIR TO ISOLATE BRIDGE CONSTRUCTION SITE

EMBankment - PLAN  
1 : 200



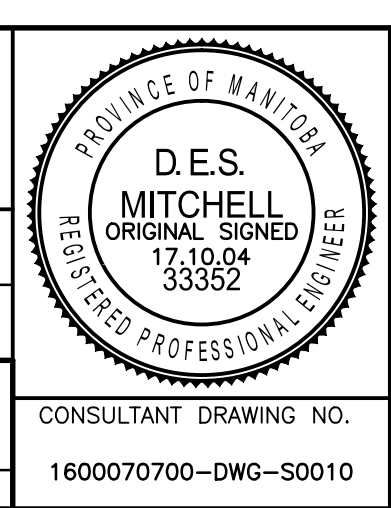
SECTION - RIPRAP SPILLWAY  
1 : 50



B.M.	ELEV.	DATE	BY
0	ISSUED FOR TENDER	17.10.04	D.M.
	NO. REVISIONS	DATE	BY

DESIGNED BY	CHECKED BY
D.M.	J.Z.
DRAWN BY	APPROVED BY
B.M.	E.F.S.
HOR. SCALE:	DATE
AS NOTED	17.10.04
VERTICAL:	ORIGINAL DRAWING SIGNED BY: O. MUHRDAREVIC, P.ENG.
AS NOTED	

ACCEPTED BY: B. MUHRDAREVIC, P.ENG. BRIDGE PROJECTS ENGINEER



**THE CITY OF WINNIPEG**  
PUBLIC WORKS DEPARTMENT  
ENGINEERING DIVISION

**SASKATCHEWAN AVE AT STURGEON CREEK  
BRIDGE CONSTRUCTION**

**EMBankment AND CHANNEL WORKS  
EMBankment PLAN & SECTION**

CITY DRAWING NUMBER  
**B248-17-010**

SHEET **10** OF **69**

**10**

CONSULTANT DRAWING NO.  
1600070700-DWG-S0010