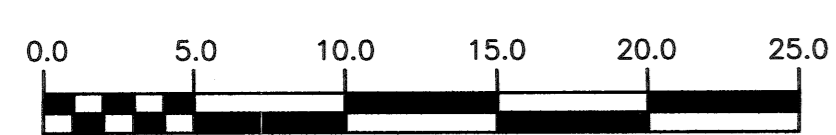
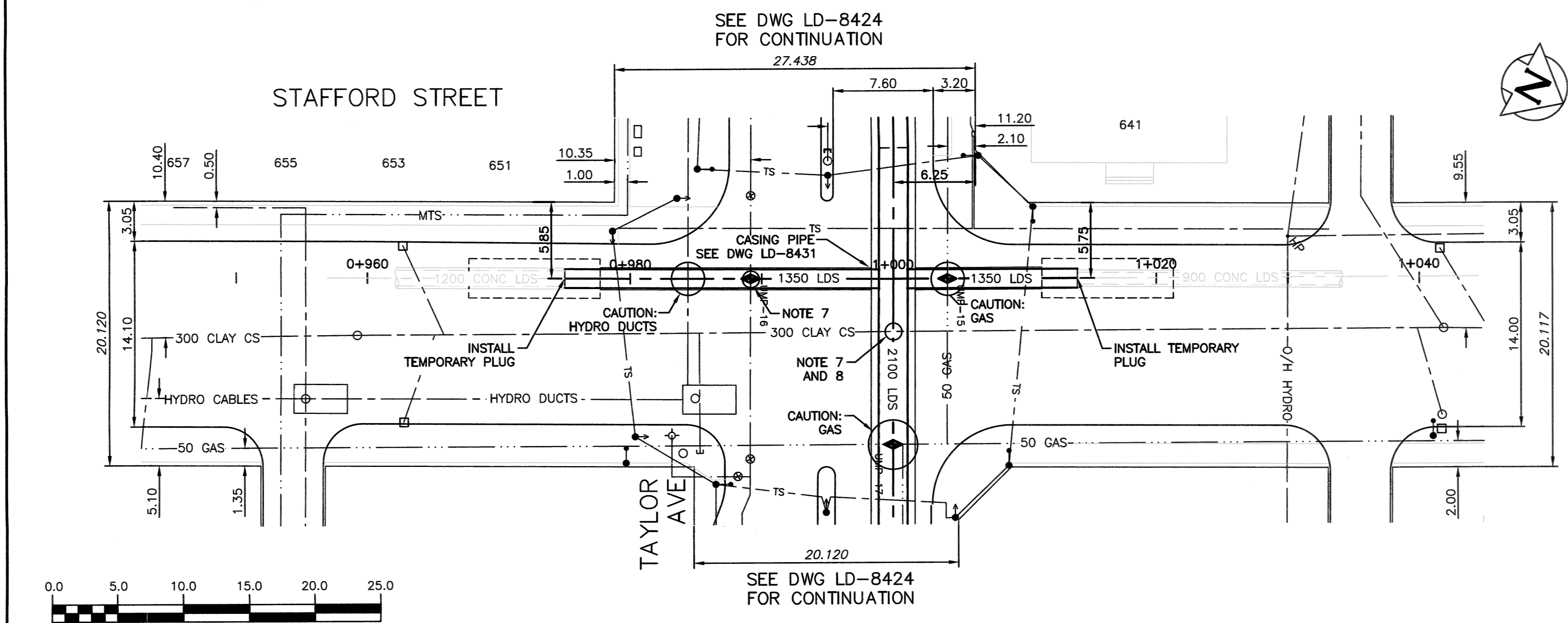


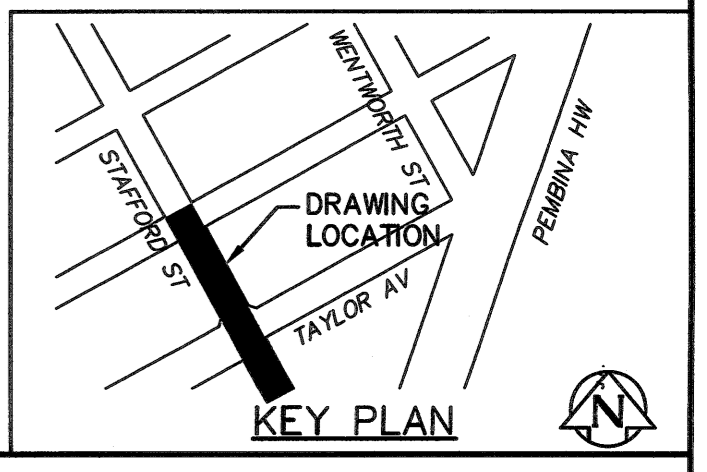
**WARNING**  
 IF POWER EQUIPMENT OR EXPLOSIVES ARE TO BE USED FOR EXCAVATION ON THIS PROJECT THE CONTRACTOR MUST:  
 1) NOTIFY THE GAS COMPANY OF THE PROPOSED LOCATION OF EXCAVATION.  
 2) TAKE PRECAUTION TO AVOID DAMAGE TO GAS COMPANY INSTALLATIONS.  
 SEE PROVINCIAL REGULATION 210/72 FOR DETAILS

**PROPERTY LIMITS DELINEATION**  
 DELINEATION OF PROPERTY LIMITS AS SHOWN ON THIS DRAWING DOES NOT REPRESENT A "LEGAL SURVEY". CH2M HILL MAKES NO REPRESENTATION OR WARRANTY AS TO THE ACCURACY OF PROPERTY LIMITS DELINEATED ON THIS DRAWING, NOR ON THE DIMENSIONAL ACCURACY OF DRAWING FEATURES RELATIVE TO THOSE PROPERTY LIMITS.

- CONSTRUCTION NOTES:**
- SEWER AND WATER SERVICES SHOWN ON DRAWING ARE APPROXIMATE ONLY.
  - LOCATION OF ALL SEWER AND WATER LINES TO BE CONFIRMED IN FIELD.
  - INSTALL NEW SEWER BY TRENCHLESS METHODS, UNLESS OTHERWISE NOTED.
  - TRAFFIC MANAGEMENT PLAN TO BE IMPLEMENTED AS PER SPECIFICATIONS DURING EACH PHASE OF CONTRACT.
  - ALL SIZING FOR SHAFTS ARE SHOWN FOR PLANNING ONLY. CONTRACTOR TO DETERMINE REQUIRED SHAFT SIZE BASED ON SELECTED METHODOLOGY.
  - CONTRACTOR'S TEMPORARY SHAFT TO HAVE A MIN. OF 1.0m OF PROPOSED LDS INSTALLED INSIDE SHAFT. SHAFT TO BE FULLY BACKFILLED WITH CONTROLLED LOW STRENGTH MATERIAL (MAX. 1MPa).
  - HYDRO EXCAVATE UTILITY PRIOR TO TUNNEL CONSTRUCTION.
  - PRE AND POST CCTV OF UTILITY CROSSING.



**APEGM**  
 Certificate of Authorization  
 CH2M HILL Canada Ltd.  
 No. 1441



SYMBOL	DESCRIPTION	SYMBOL	DESCRIPTION	SYMBOL	DESCRIPTION	SYMBOL	DESCRIPTION
150 WM	WATER MAIN	150 WM	HYDRO	150 WM	WATER MAIN	150 WM	WATER MAIN
Hydrant	HYDRANT	Valve	M.T.S.	Hydrant	HYDRANT, VALVE	Hydrant	HYDRANT, VALVE
Concrete	CONCRETE	Asphalt	ASPHALT	Concrete	CONCRETE	Concrete	CONCRETE
300 LDS	LAND DRAINAGE SEWER	300 LDS	LAND DRAINAGE SEWER	300 LDS	LAND DRAINAGE SEWER	300 LDS	LAND DRAINAGE SEWER
250 WWS	WASTE WATER SEWER	250 WWS	WASTE WATER SEWER	250 WWS	WASTE WATER SEWER	250 WWS	WASTE WATER SEWER
Manhole	MANHOLE	Manhole	MANHOLE	Manhole	MANHOLE	Manhole	MANHOLE
Catch Basin	CATCH BASIN	Curb Inlet	CURB INLET	Catch Basin	CATCH BASIN	Catch Basin	CATCH BASIN
Reducer	REDUCER	Reducer	REDUCER	Reducer	REDUCER	Reducer	REDUCER
Existing	LEGEND-PLAN	Proposed	PROPOSED	Existing	LEGEND-PLAN	Proposed	PROPOSED

**LOCATION APPROVED UNDERGROUND STRUCTURES**

DATE COMMITTEE

NOTE:  
 LOCATION OF UNDERGROUND STRUCTURES AS SHOWN ARE BASED ON THE BEST INFORMATION AVAILABLE BUT NO GUARANTEE IS GIVEN THAT ALL EXISTING UTILITIES ARE SHOWN OR THAT THE GIVEN LOCATIONS ARE EXACT. CONFIRMATION OF EXISTENCE AND EXACT LOCATION OF ALL SERVICES MUST BE OBTAINED FROM THE INDIVIDUAL UTILITIES BEFORE PROCEEDING WITH CONSTRUCTION.

**KGS GROUP CONSULTING ENGINEERS**

DESIGNED BY: SDG  
 CHECKED BY: MD  
 DRAWN BY: JBC  
 APPROVED BY: [Signature]

HOR. SCALE: 1:250  
 VERTICAL: 1:50

RELEASED FOR CONSTRUCTION: [Signature]  
 DATE: Jun 19/19

ENGINEER'S SEAL 01-19-18

**S. D. GODON**  
 Member 25524  
 REGISTERED PROFESSIONAL ENGINEER

CONSULTANT DRAWING NO. C-254

**THE CITY OF WINNIPEG WATER AND WASTE DEPARTMENT**

PROJECT TITLE: COCKBURN AND CALROSSIE COMBINED SEWER RELIEF WORKS - CONTRACT 5  
 STAFFORD STREET

SHEET OF 17 OF 25  
 COMPUTER FILE NAME: C-254.dwg  
 CITY DRAWING NUMBER: LD-8428

File Name: C:\pwworkdir\ch2mhill\wg\portez\404366571