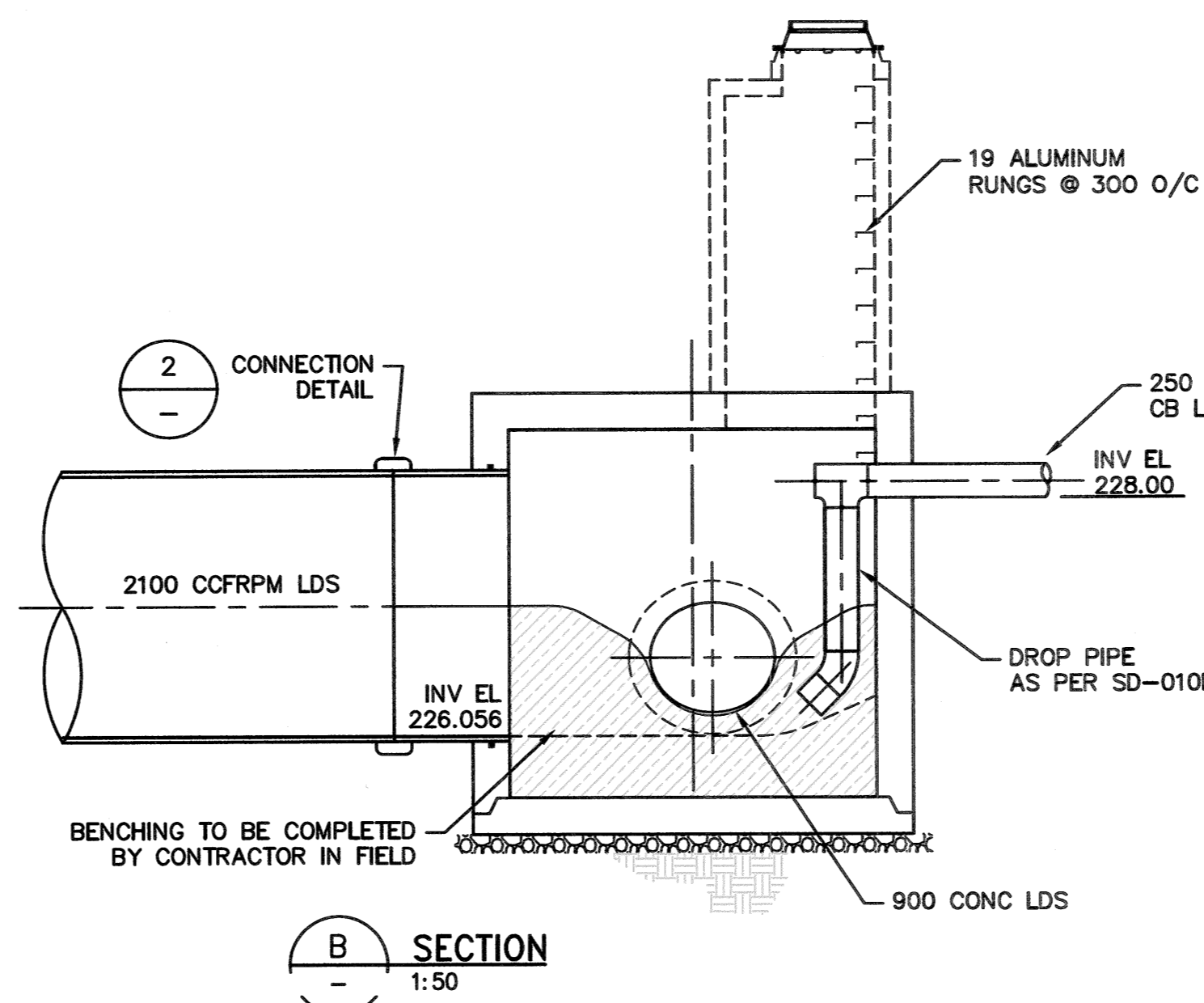
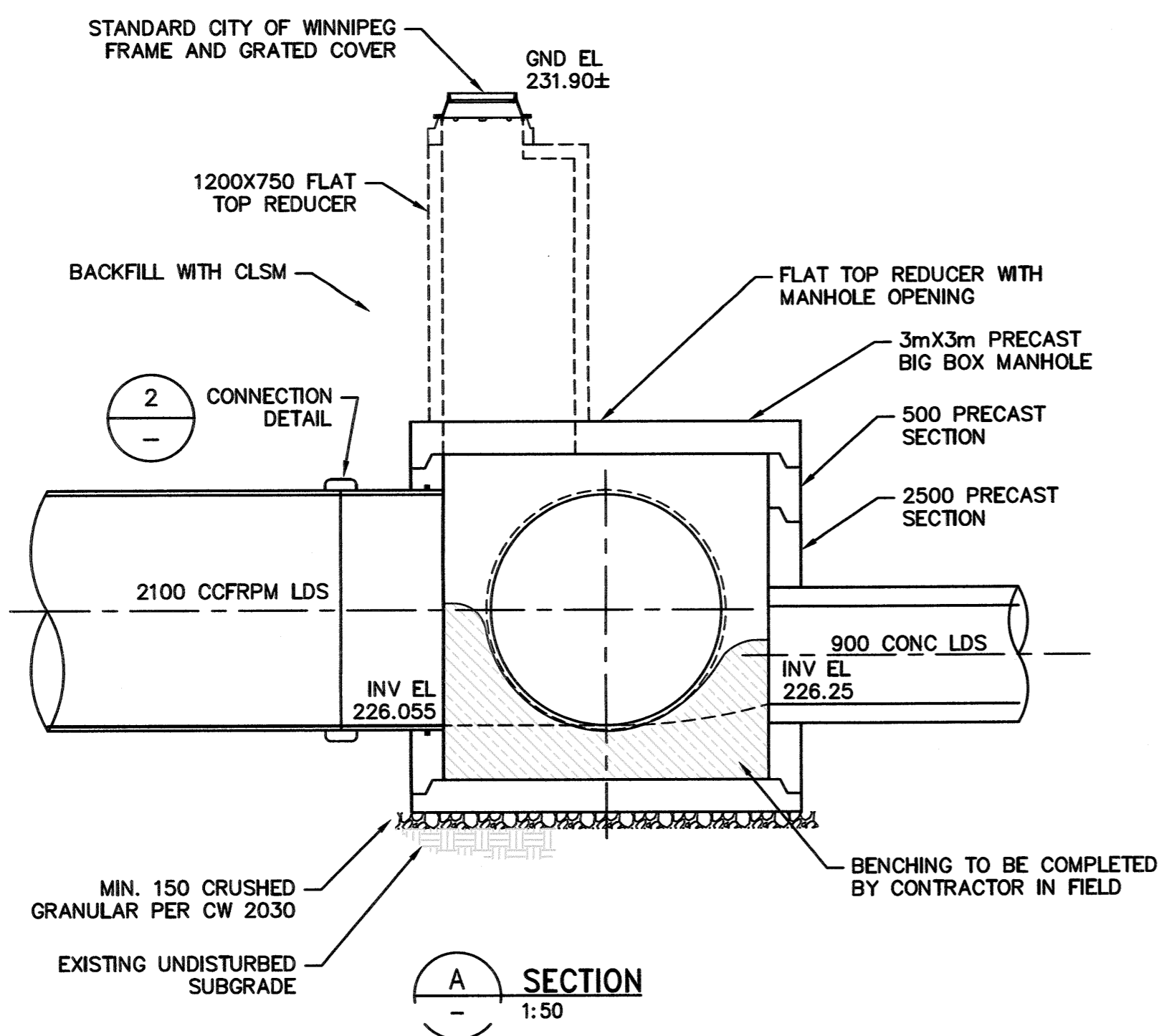


NOTES:
 1. TOTAL WIDTH OF STRUCTURE WALLS GREATER THAN 290mm (AT CONTRACTOR'S OPTION)
 2. MINIMUM WALL PIPE LENGTH EQUAL TO STRUCTURE THICKNESS (W) PLUS STUB LENGTH
 3. WALL FITTING TO BE CAST IN PLACE ON SITE OR PRECAST BY MANHOLE MANUFACTURER.

2 HOBAS PIPE CONNECTION DETAIL
NTS



CONSTRUCTION NOTES:

- SEWER AND WATER SERVICES SHOWN ON DRAWING ARE APPROXIMATE ONLY.
- LOCATION OF ALL SEWER AND WATER LINES TO BE CONFIRMED IN FIELD.
- INSTALL NEW SEWER BY TRENCHLESS METHODS, UNLESS OTHERWISE NOTED.
- TRAFFIC MANAGEMENT PLAN TO BE IMPLEMENTED AS PER SPECIFICATIONS DURING EACH PHASE OF CONTRACT.
- CONTRACTOR TO DESIGN TEMPORARY SHORING WORKS. SEE TRAFFIC RESTRICTIONS WITHIN THE DETAIL SPECIFICATIONS FOR CONSTRAINTS.
- INSTALL 2100 CCFRPM WITHIN SHAFT AS PER MANUFACTURER'S RECOMMENDATIONS FOR OPEN CUT INSTALLATIONS.
- PRECAST BIG BOX TO BE INSTALLED AS PER CW2130 UNLESS OTHERWISE NOTED.
- BIG BOX MANHOLE MANUFACTURED BY LAFARGE OR EQUIVALENT IN ACCORDANCE WITH B7 OF THE SPECIFICATION.

NOTE:
 IN ADDITION TO THE JACKING FORCE REQUIREMENTS, PIPES WITHIN THE SHAFT TO BE CLASSIFIED FOR OPEN CUT INSTALLATION, INSTALLATION INCLUDING BACKFILLING WITH CLSM TO BE IN ACCORDANCE WITH THE MANUFACTURER'S RECOMMENDATIONS.

File Name: c:\pwworkdir\ch2m\mill_wbg\jortez\40436659\



B.M. ELEV.		KGS GROUP CONSULTING ENGINEERS	ch2m	ENGINEER'S SEAL 	THE CITY OF WINNIPEG WATER AND WASTE DEPARTMENT
DESIGNED BY	MD				
DRAWN BY	JBC	APPROVED BY		PROJECT TITLE COCKBURN AND CALROSSIE COMBINED SEWER RELIEF WORKS - CONTRACT 5	SHEET OF 25 OF 25
HOR. SCALE:	AS NOTED	RELEASED FOR CONSTRUCTION:			
ISSUED FOR TENDER	01/2018	DATE	JBC	CONSULTANT DRAWING NO.	S-511
NO. REVISIONS		DATE		STRUCTURAL MANHOLE CHAMBER MH-44 DETAILS	CITY DRAWING NUMBER LD-8436