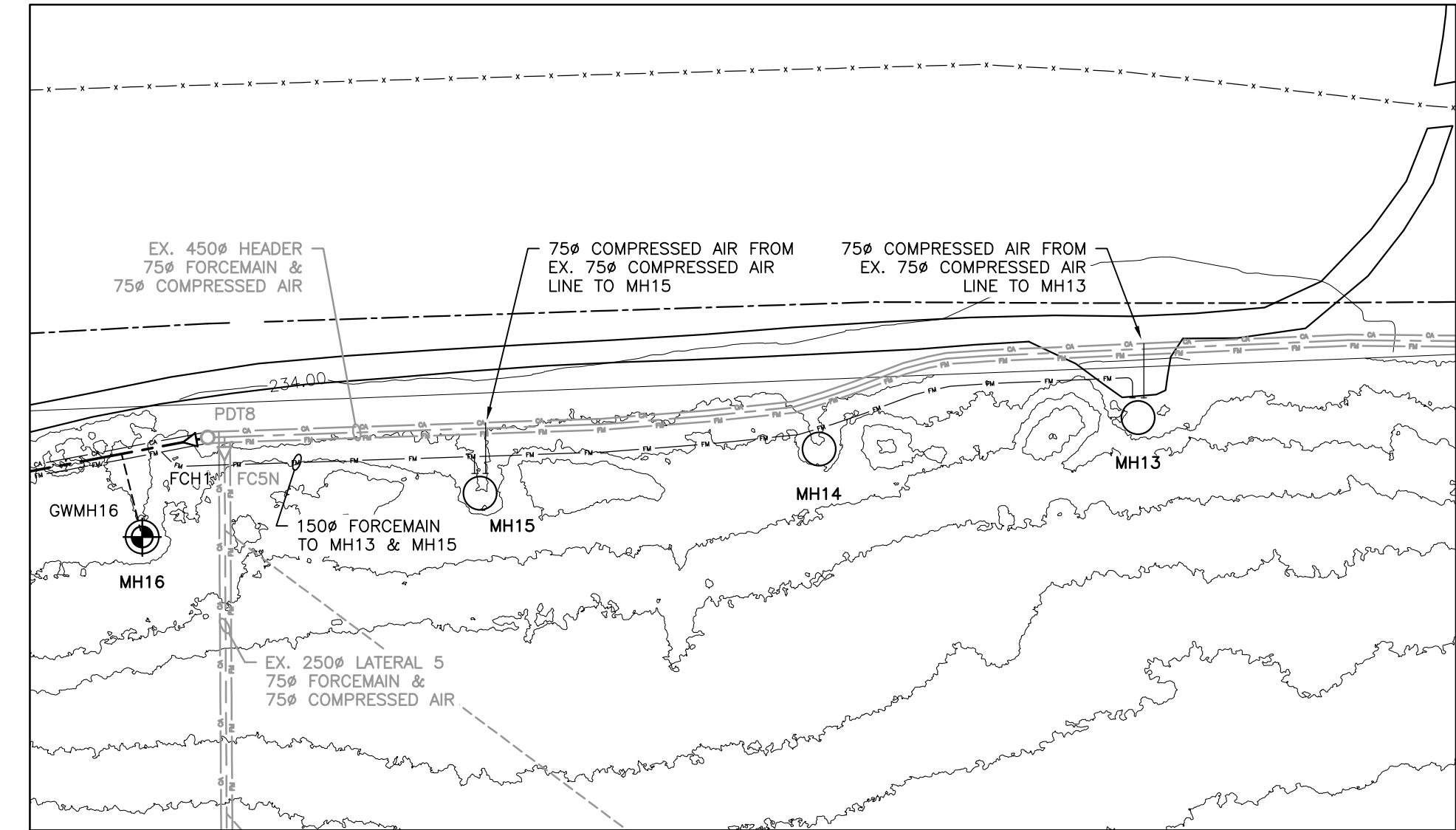
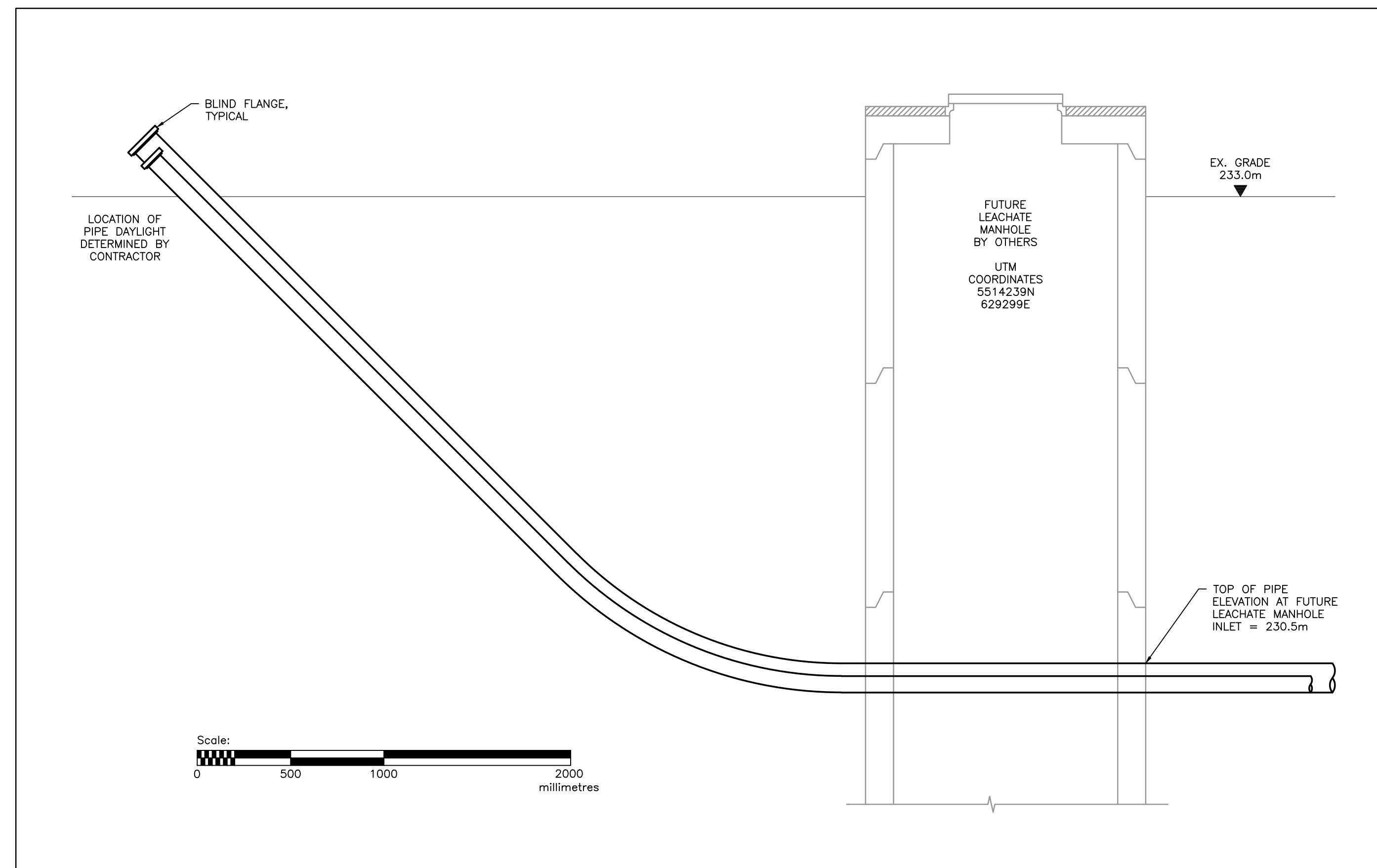
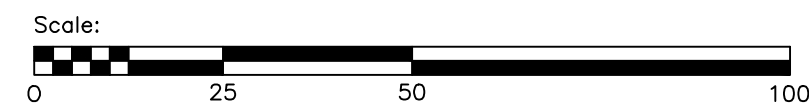


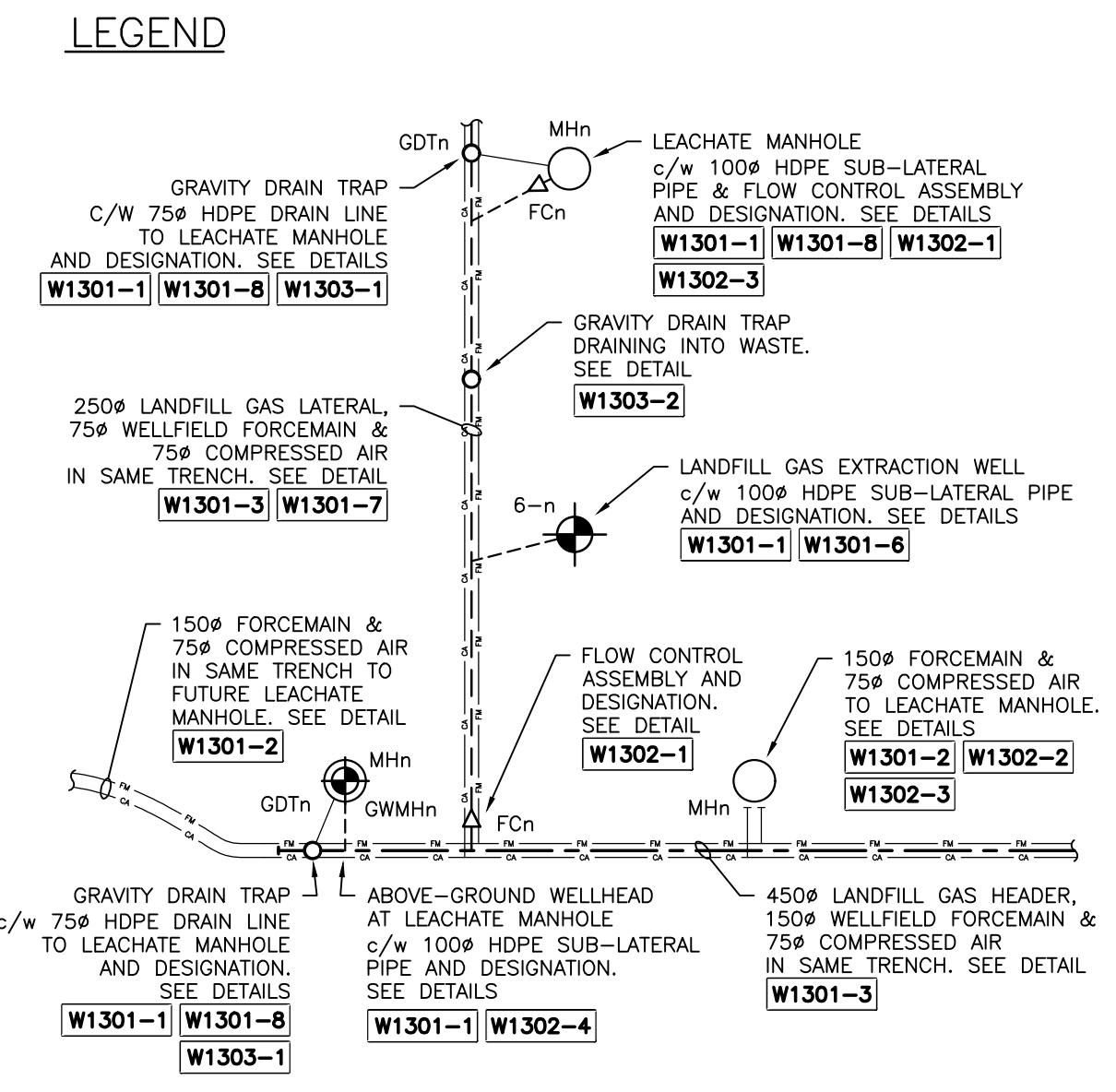
FUTURE LEACHATE MANHOLE AREA PLAN



FORCEMAIN TO MH13 AREA PLAN



FUTURE LEACHATE MANHOLE ELEVATION A



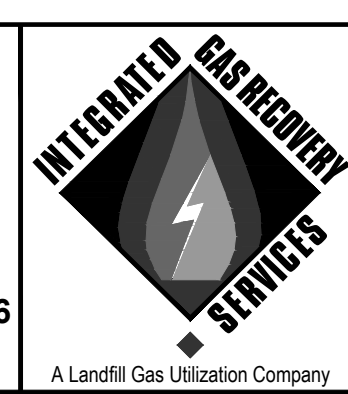
NO.	REVISION	DATE	BY
1	ISSUED FOR APPROVAL	Jan. 23, 2017	JDP
2	ISSUED FOR APPROVAL - REVISED	Jan. 30, 2017	JDP
3	ISSUED FOR TENDER	Mar. 20, 2017	JDP

**NOTES:**  
 1. ALL DIMENSIONS ARE IN MILLIMETRES UNLESS NOTED OTHERWISE.  
 2. ALL PIPE SIZES ARE IPS UNLESS NOTED OTHERWISE.  
 3. IN STEEPLY SLOPED AREAS WITHIN THE LIMITS OF THE LANDFILL AREA, INSTALL PIPING TO MAINTAIN MINIMUM COVER (1.5m) AND MINIMUM 3% SLOPE. OUTSIDE THE LIMITS OF THE LANDFILL AREA, MAINTAIN MINIMUM COVER (1.5m) AND MINIMUM 1% SLOPE (OR SLOPE AS INDICATED).  
 4. TRENCHES CONTAINING ONLY FORCEMAIN AND/OR COMPRESSED AIR PIPING MUST BE INSTALLED TO MAINTAIN MINIMUM COVER (1.5m) BUT DO NOT NEED TO BE SLOPED UNLESS NOTED OTHERWISE.



PROJECT NUMBER: 9-508  
 DATE: JANUARY, 2017  
 SCALE: SEE SCALE BAR  
 DESIGNED BY: JDP  
 DRAWN BY: JDP  
 CHECKED BY: AEM

**COMCOR**  
 ENVIRONMENTAL LIMITED  
 Consulting Engineers and Landfill Gas Specialists  
 320 Pinebush Road, Suite 12, Cambridge, Ontario N1T 1Z6  
 tel (519) 621-6669 • fax (519) 621-9944



City of Winnipeg  
 Brady Road  
 Resource Management  
 Facility

2017 LANDFILL GAS  
 COLLECTION SYSTEM EXPANSION  
 CITY DRAWING NO. 1-0400A-D0006-001 COMCOR DRAWING NO. W1003  
 PART PLANS