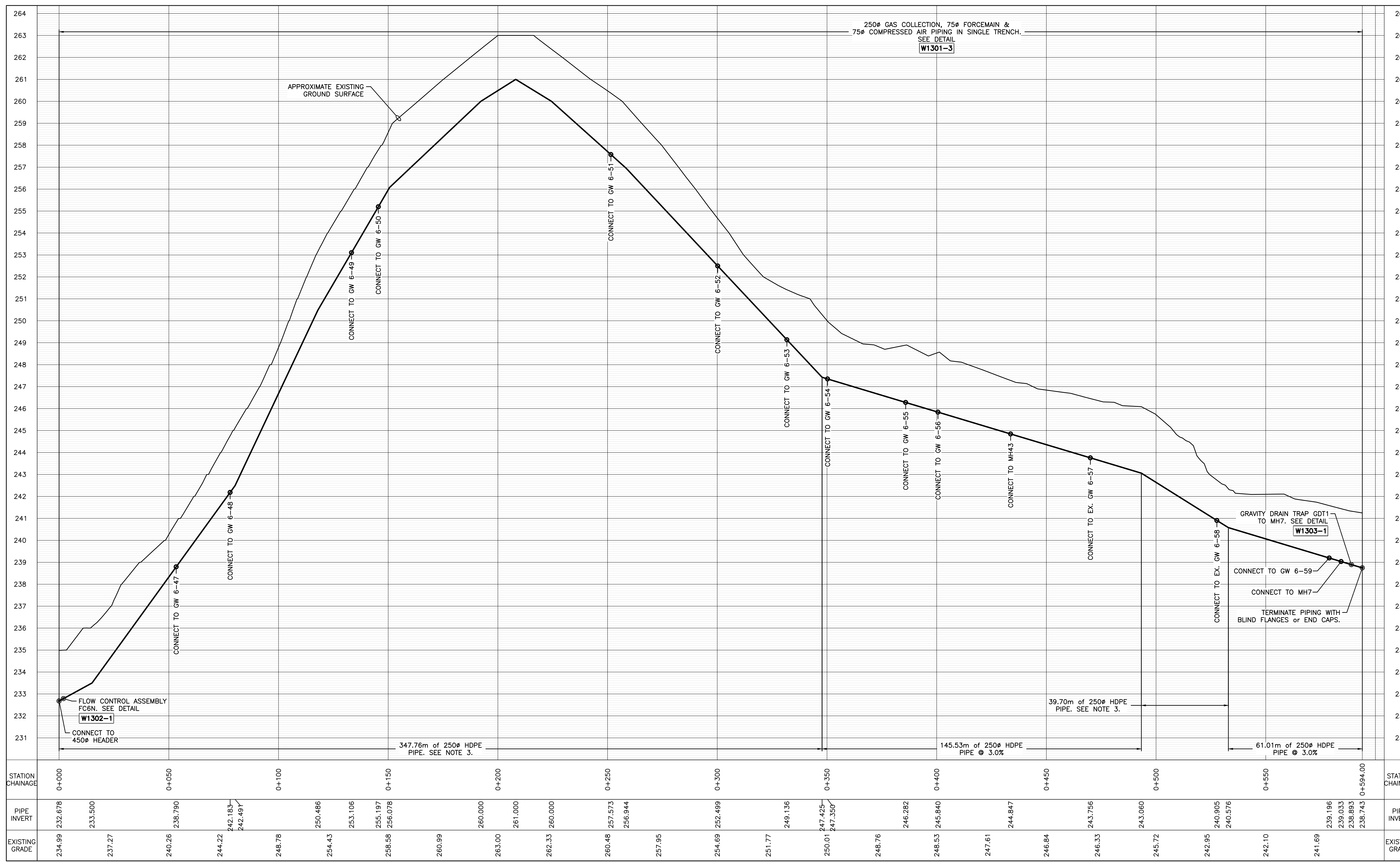
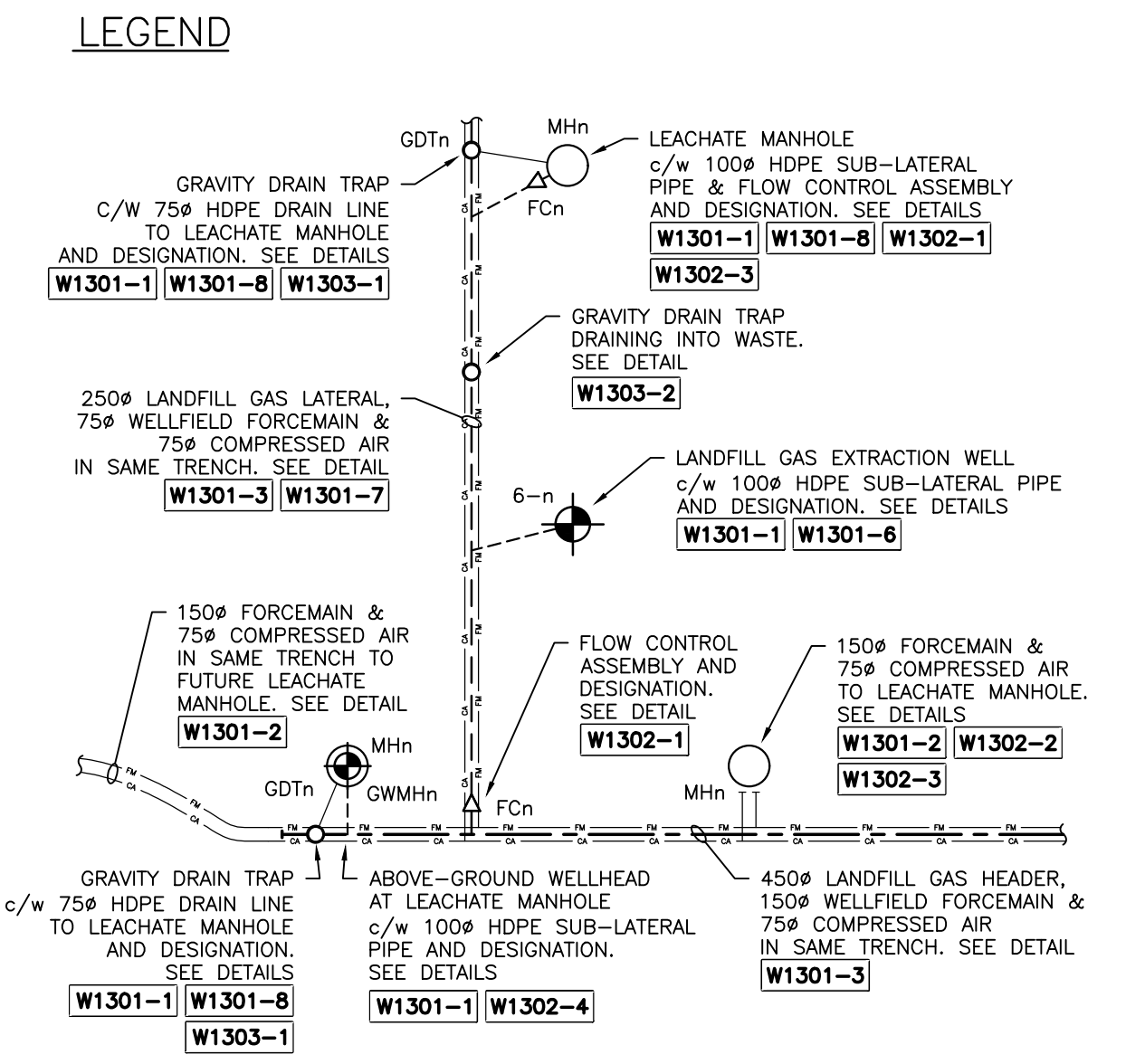
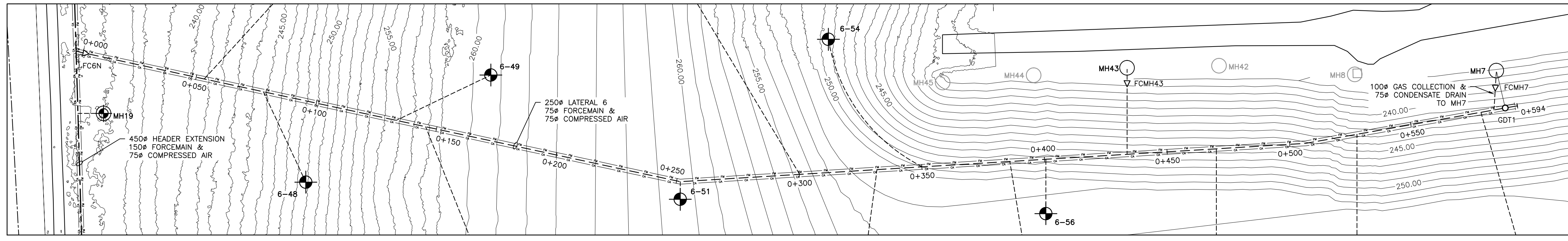


March 20, 2017 2:31:13 PM
C:\Users\Jonathan\Desktop\3D Temp Terry\Brady 2017 Wellfield Expansion\Models\Brady Road 2017 Wellfield Expansion - 508-1 - W1002 Site Plan Rev3.dwg



PROFILE

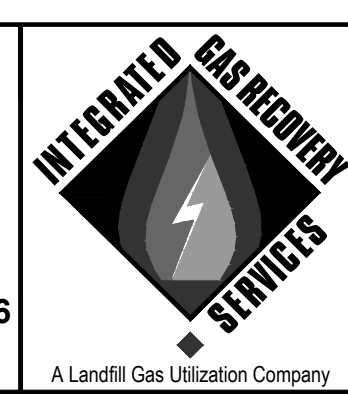
NO.	REVISION	DATE	BY
1	ISSUED FOR APPROVAL	Jan. 23, 2017	JDP
2	ISSUED FOR APPROVAL - REVISED	Jan. 30, 2017	JDP
3	ISSUED FOR TENDER	Mar. 20, 2017	JDP

NOTES:
 1. ALL DIMENSIONS ARE IN MILLIMETRES UNLESS NOTED OTHERWISE.
 2. ALL PIPE SIZES ARE IN IPS UNLESS NOTED OTHERWISE.
 3. IN STEEPLY SLOPED AREAS WITHIN THE LIMITS OF THE LANDFILL AREA, INSTALL PIPING TO MAINTAIN MINIMUM COVER (1.5m) AND MINIMUM 3% SLOPE. OUTSIDE THE LIMITS OF THE LANDFILL AREA, MAINTAIN MINIMUM COVER (1.5m) AND MINIMUM 1% SLOPE (OR SLOPE AS INDICATED).



PROJECT NUMBER: 9-508
 DATE: JANUARY, 2017
 SCALE: SEE SCALE BAR
 DESIGNED BY: JDP
 DRAWN BY: JDP
 CHECKED BY: AEM

COMCOR
 ENVIRONMENTAL LIMITED
 Consulting Engineers and Landfill Gas Specialists
 320 Pinebush Road, Suite 12, Cambridge, Ontario N1T 1Z6
 tel (519) 621-6669 • fax (519) 621-9944



City of Winnipeg
 Brady Road
 Resource Management
 Facility

2017 LANDFILL GAS
 COLLECTION SYSTEM EXPANSION
 CITY DRAWING NO. 1-0400A-D0008-001 COMCOR DRAWING NO. W1201
 PLAN & PROFILE -
 250# LATERAL 6