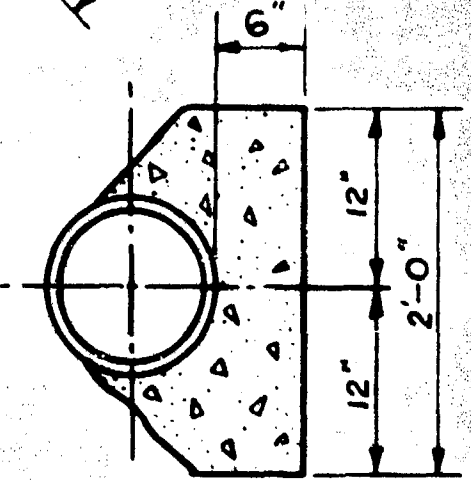
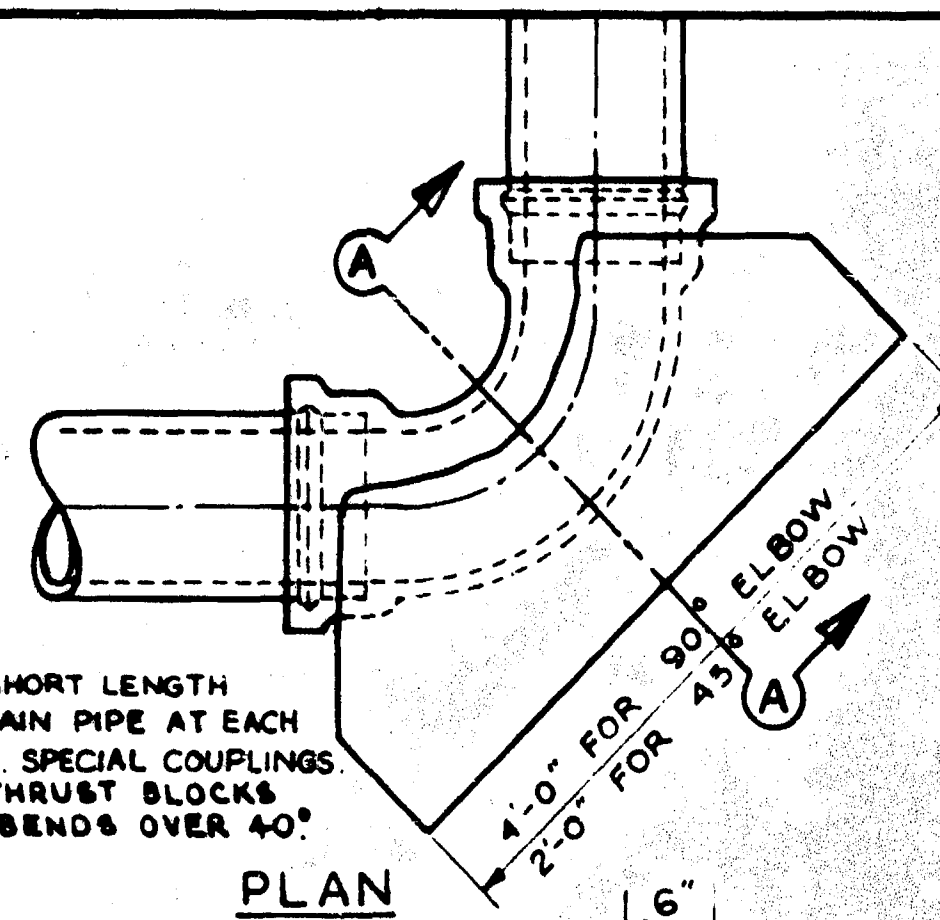
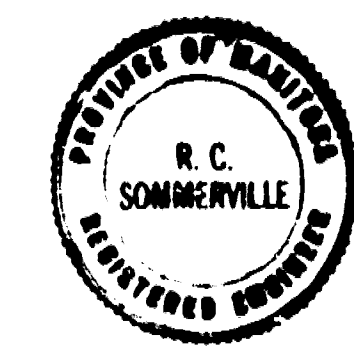


NOTE:  
 USE SHORT LENGTH  
 OF FORCEMAIN PIPE AT EACH  
 END OF C.I. SPECIAL COUPLINGS.  
 PROVIDE THRUST BLOCKS  
 FOR ALL BENDS OVER 40°



BEGINNING OF SEC "A"  
 STA. 48+43.50 (FACE OF BELL)

HAWTHORNE COMM. &  
 PUMPING STATION.



SEC. "A"

REVISIONS			GREATER WINNIPEG SANITARY DISTRICT SECONDARY SEWERS	
NO.	DESCRIPTION	DATE	BY	
1	LOCATION OF GAS AND POLE LINES		C. ROYER S.A.	
			KILDONAN DRIVE FORCEMAIN STA. 44+44.85 TO STA. 48+43.50'	
			DATE OF ISSUE	NO. OF SHEETS
			19 11 59	1
			SCALE	VERTICAL 1"=4'
			322	