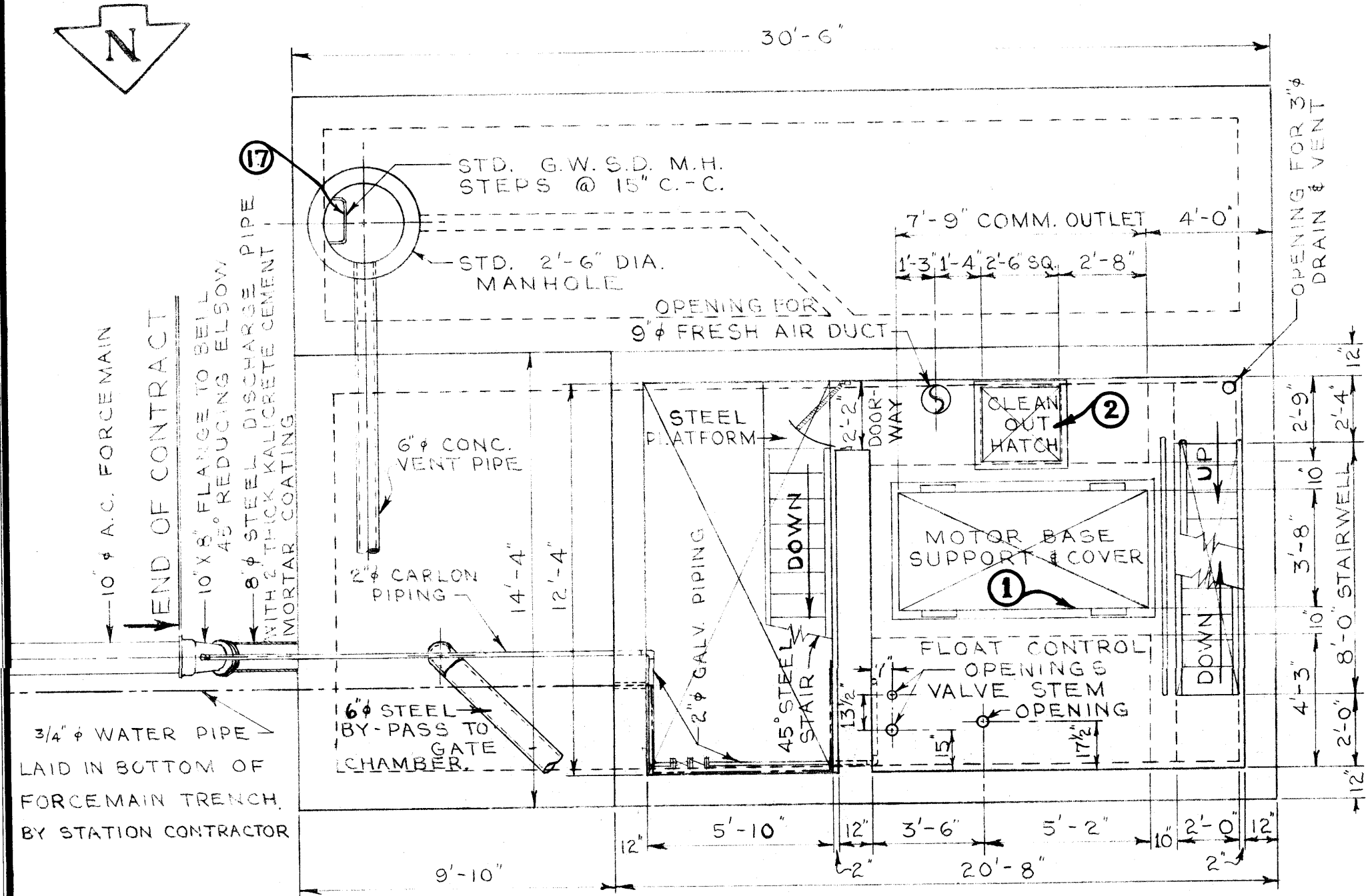
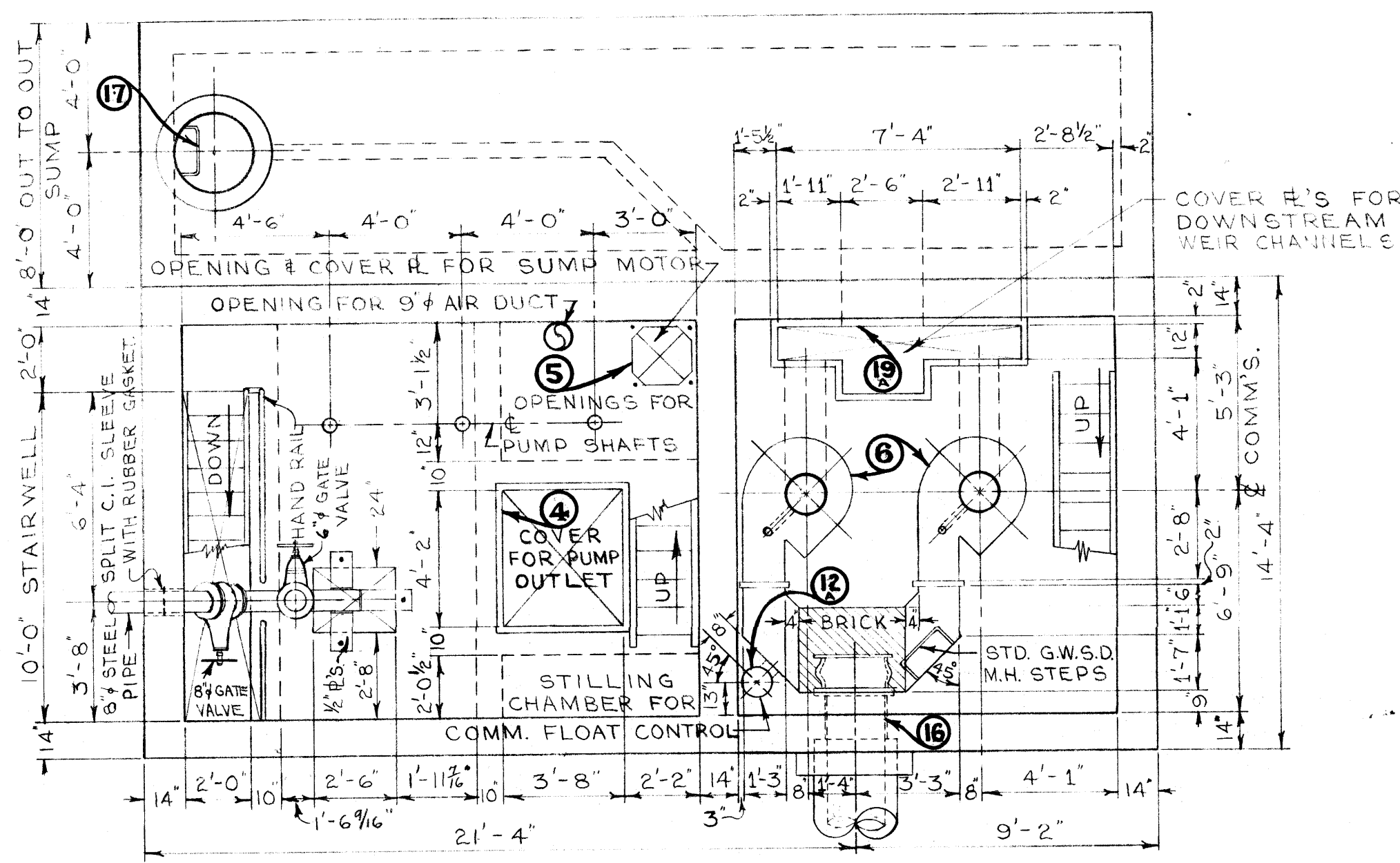


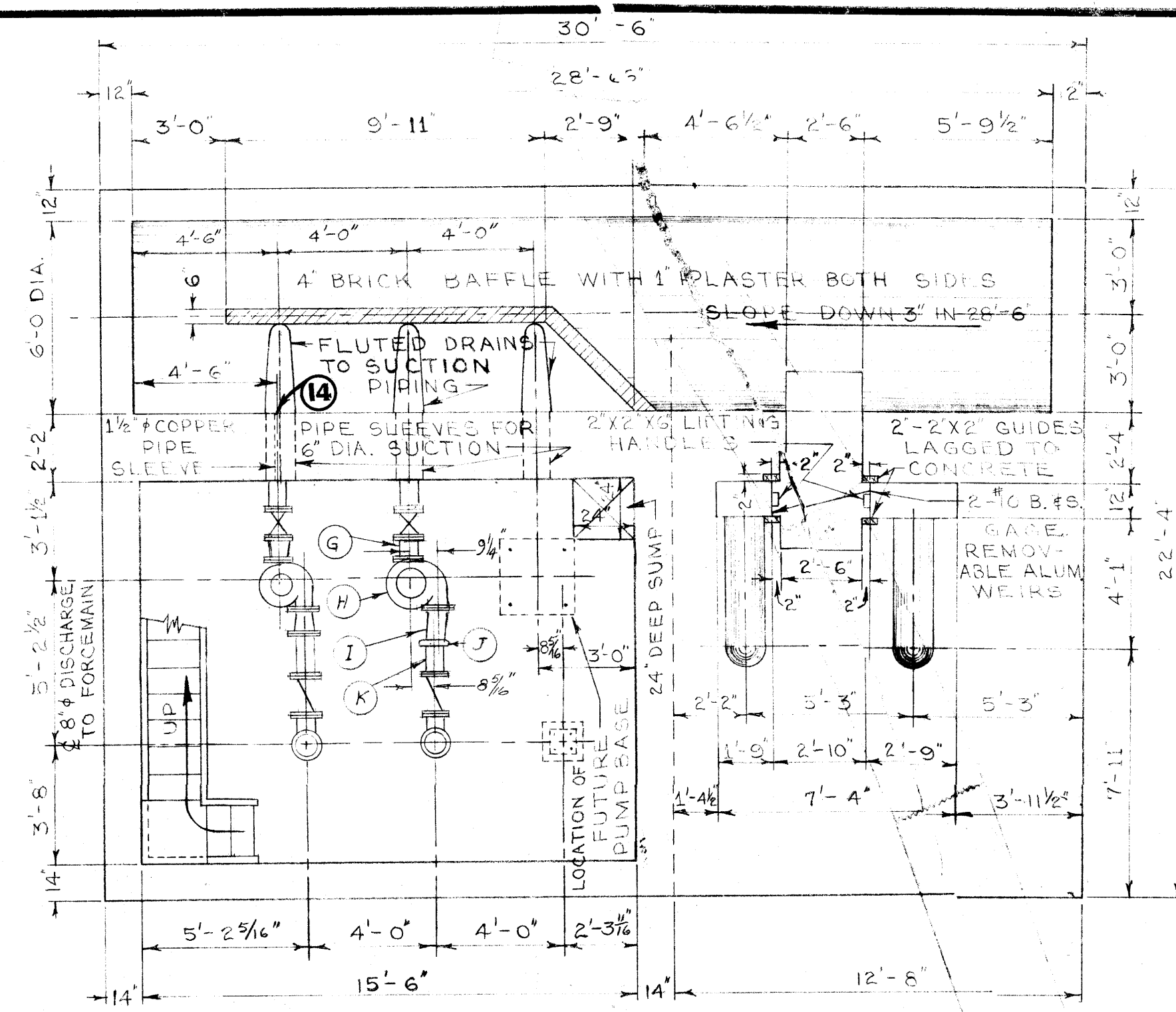
NOTE: ALL PIPE SLEEVES TO BE SEALED WITH BITUMASTIC COMPOUND TO PROVIDE WATER-TIGHT SEAL.



PLAN OF COMM. MOTOR RM. FL.

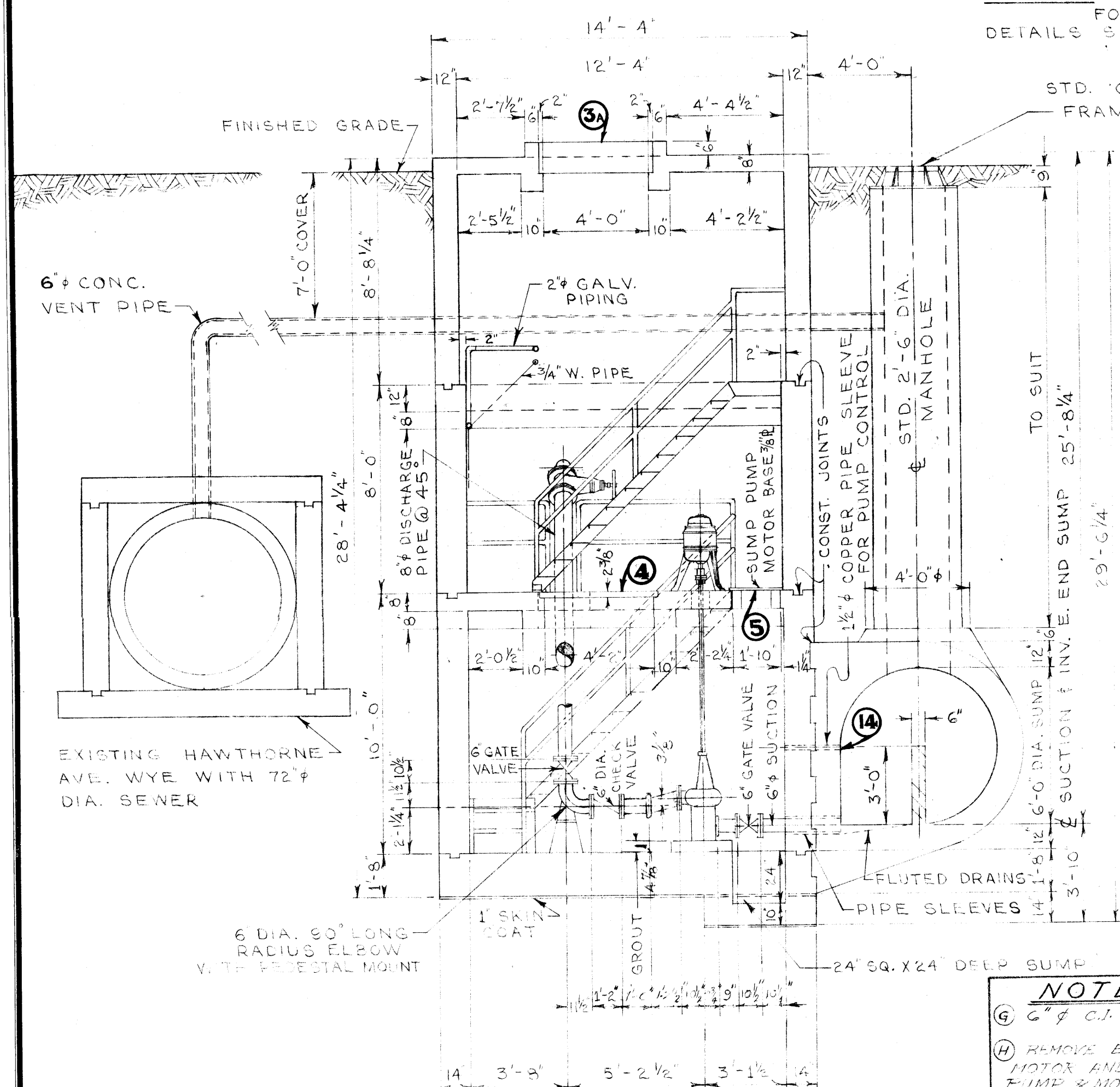


PLAN OF PUMP MOTOR RM. & COMM. CHAMBER FL.

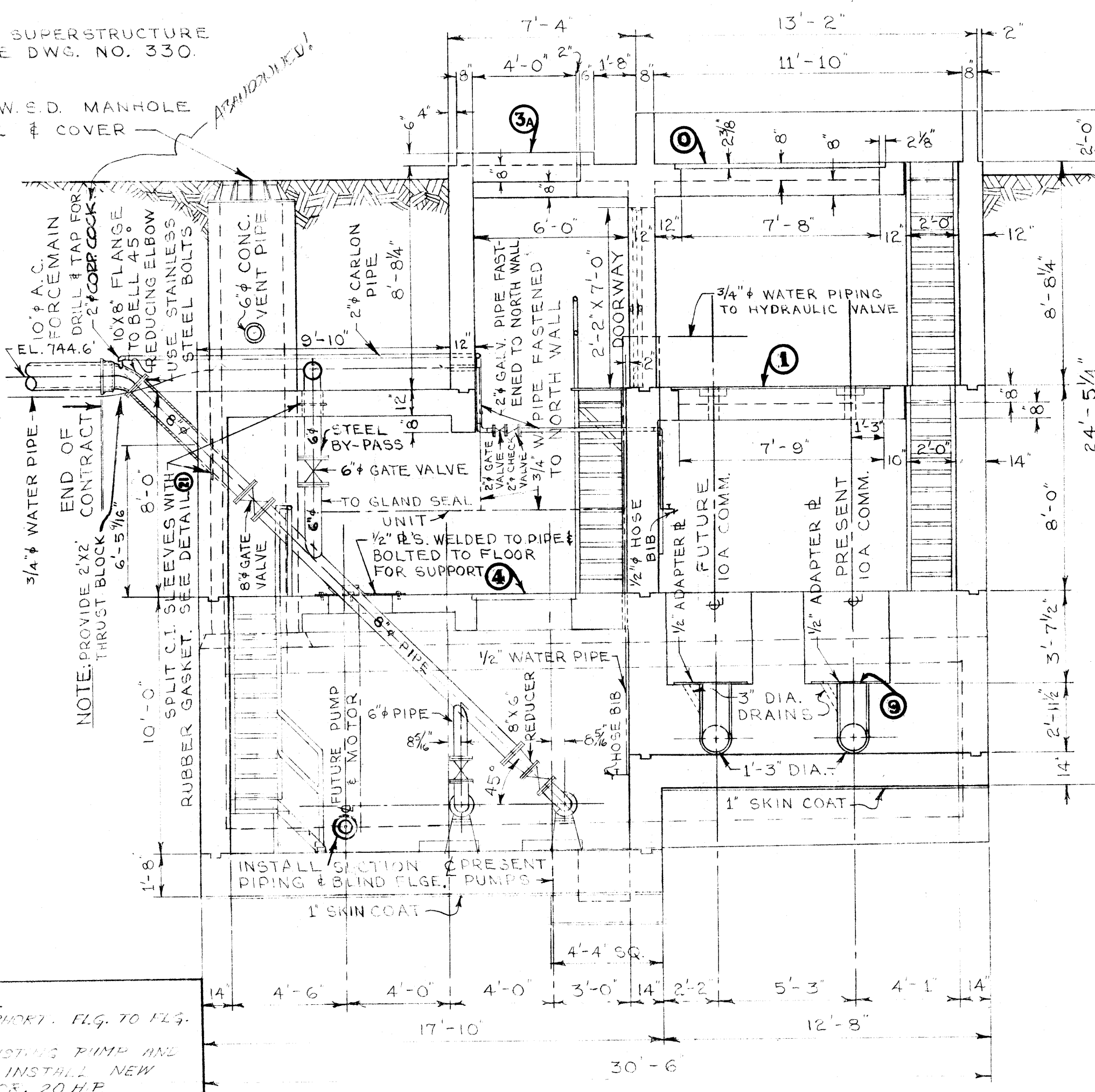


PLAN OF SUMP, PUMP CHAMBER & COMM. DISCHARGE

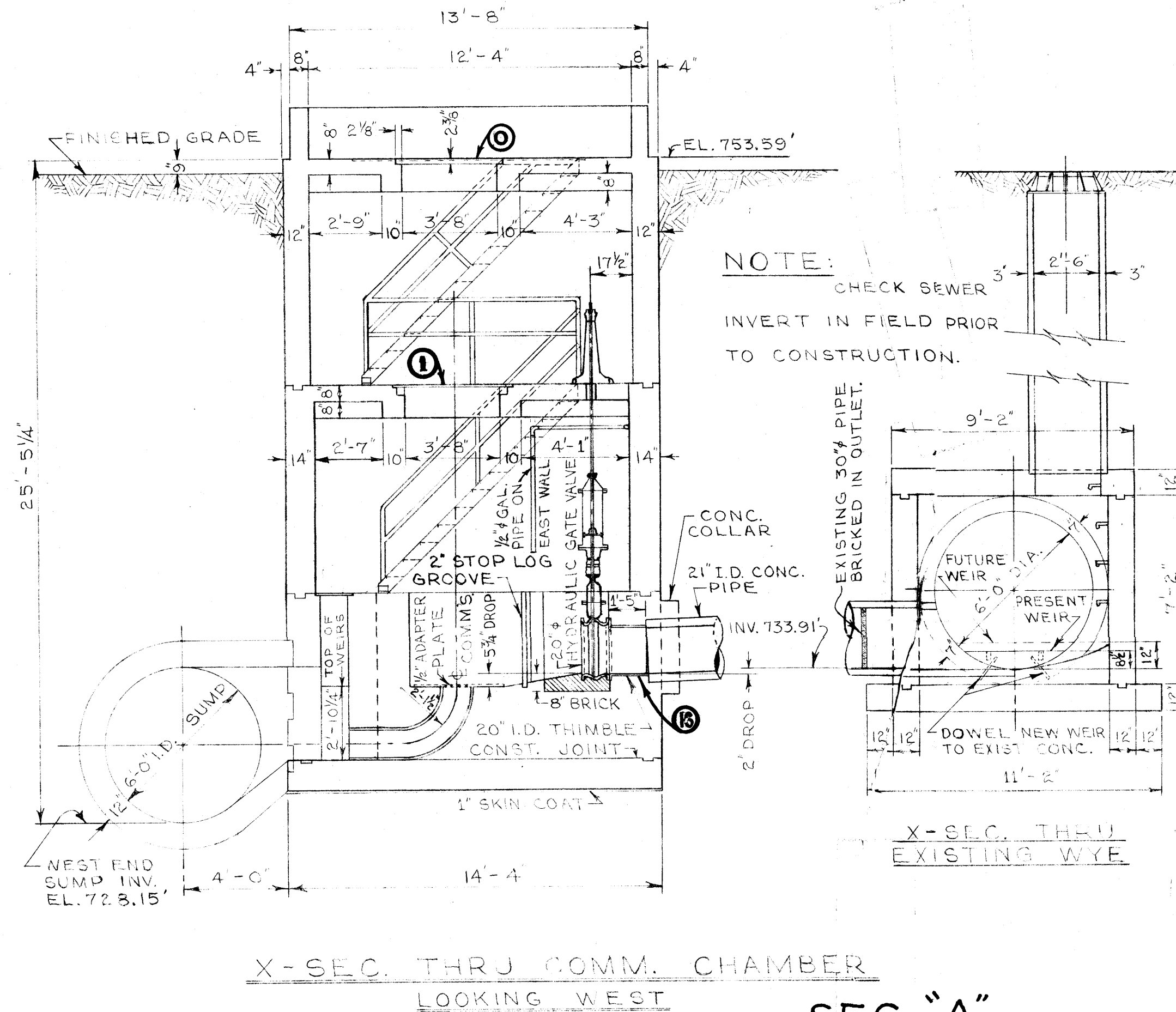
NOTE: FOR SUPERSTRUCTURE DETAILS SEE DWG. NO. 330.



X-SEC. THRU PUMP CHAMBER LOOKING EAST



LONGITUDINAL SEC. LOOKING SOUTH



X-SEC. THRU COMM. CHAMBER LOOKING WEST

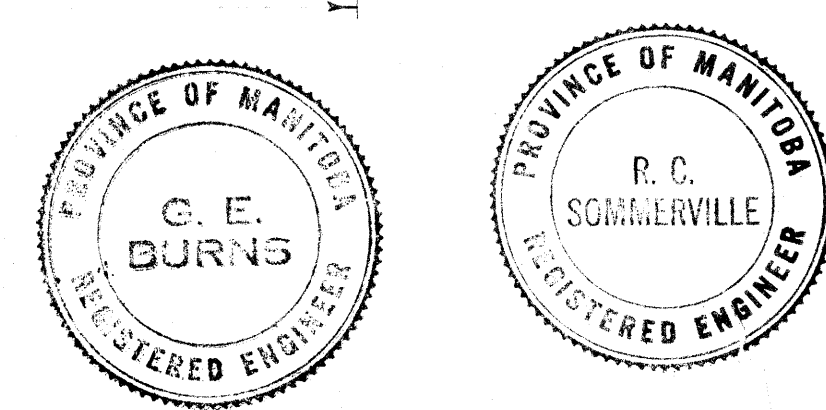
SEC. "A"

NOTE: 1. ALL STAIRS 45° PREFABRICATED STEEL CONSTRUCTION TO SUIT FIELD DIMENSIONS. 2. (NO) - NUMBERS REFER TO DETAIL DWGS.

NOTE: 1. 6" C.I. SHORT. FLG. TO FLG. 2. REMOVE EXISTING PUMP AND MOTOR AND INSTALL NEW PUMP & MOTOR, 20 HP. 6" SUCT. & 6" DISCH. (SUPPLIED UNDER WARRANTY CONTRACT) 3. 6" C.I. SHORT FLG. TO NOT 4. 2" WORM GEAR COUPLING STYLE #11. 5. 6" C.I. SHORT NOT TO FLG.

Table with 4 columns: NO., DESCRIPTION, DATE, BY. It lists two revisions: 1. PUMP DIMENSIONS ADDED. 6 JAN 60 S.K. 2. PUMPS AND PIPING REPLACED. JUN 67 Y.D.

Project information block including: GREATER WINNIPEG SANITARY DISTRICT SECONDARY SEWERS, HAWTHORNE COMM. & PUMP STA. GENERAL LAYOUT OF SUBSTRUCTURE, APPROVED BY Supt. A. Penner, DESIGNED BY G.E. Burns, CHECKED BY R.K. Burns, DATE 29 OCT. 59, DRAWING NO. 329.



file # SP 10074

329

REF. or DRAWING No. DETAILS