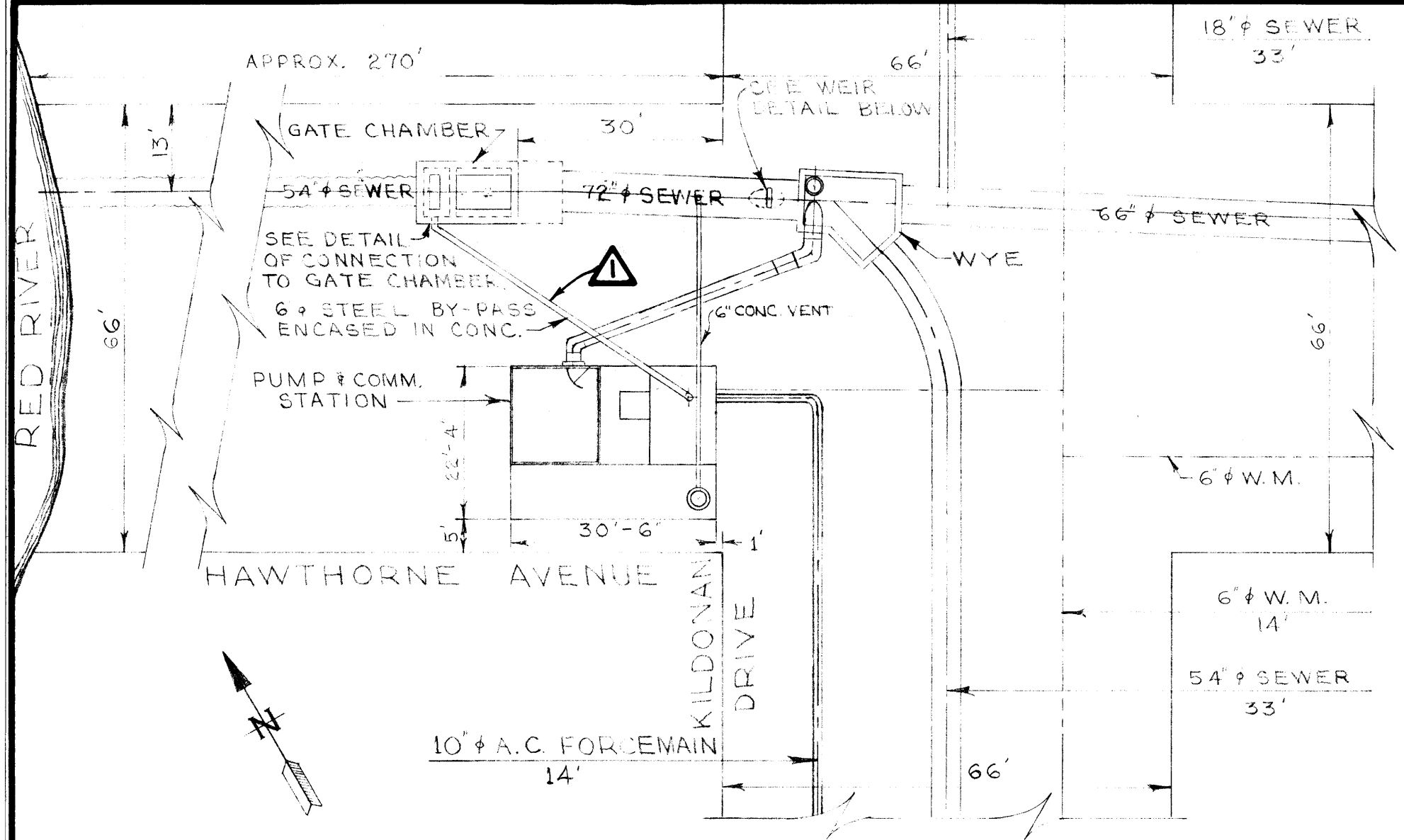


file # Sp10015

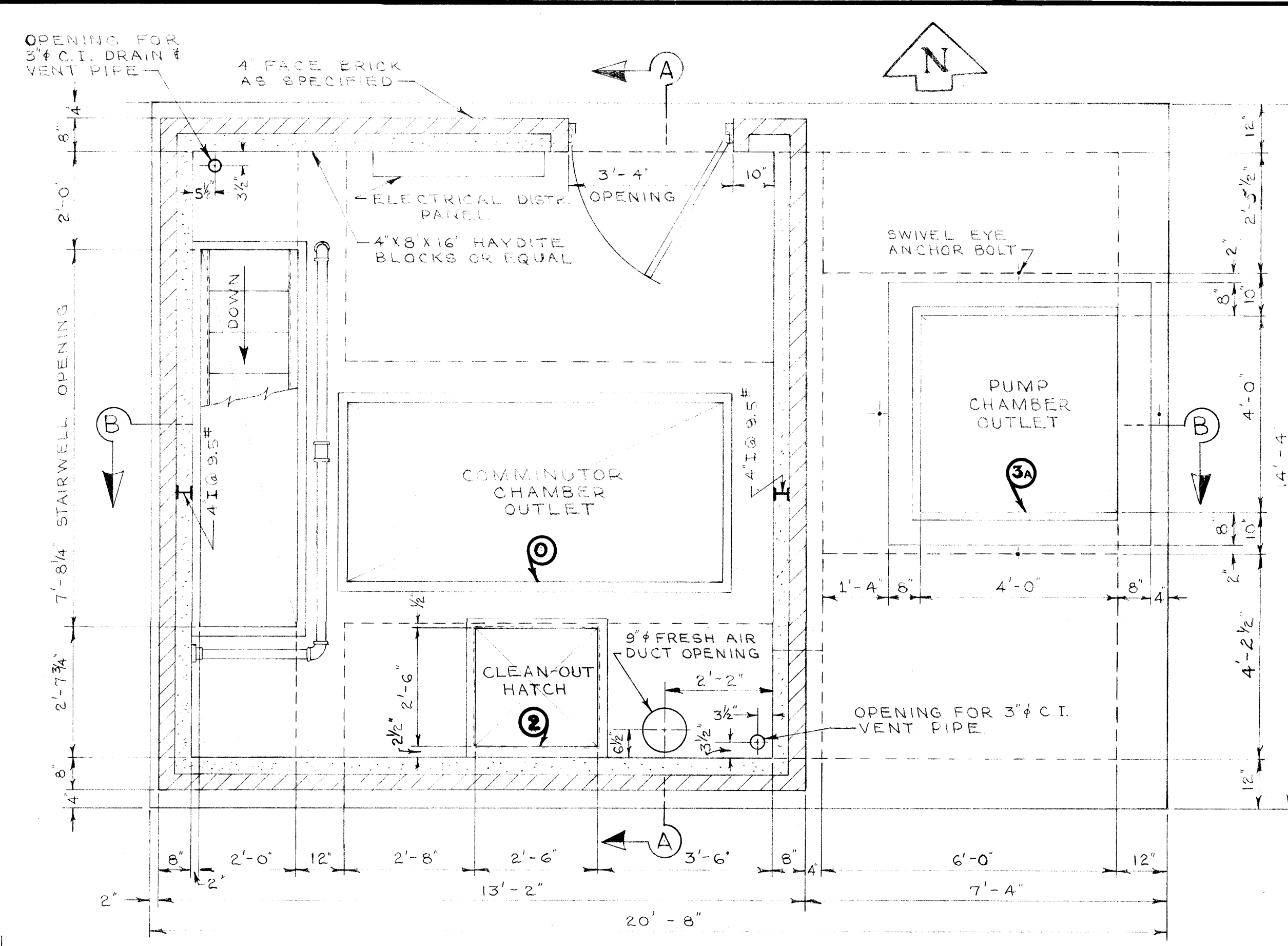
330

REF. or DRAWING NO.

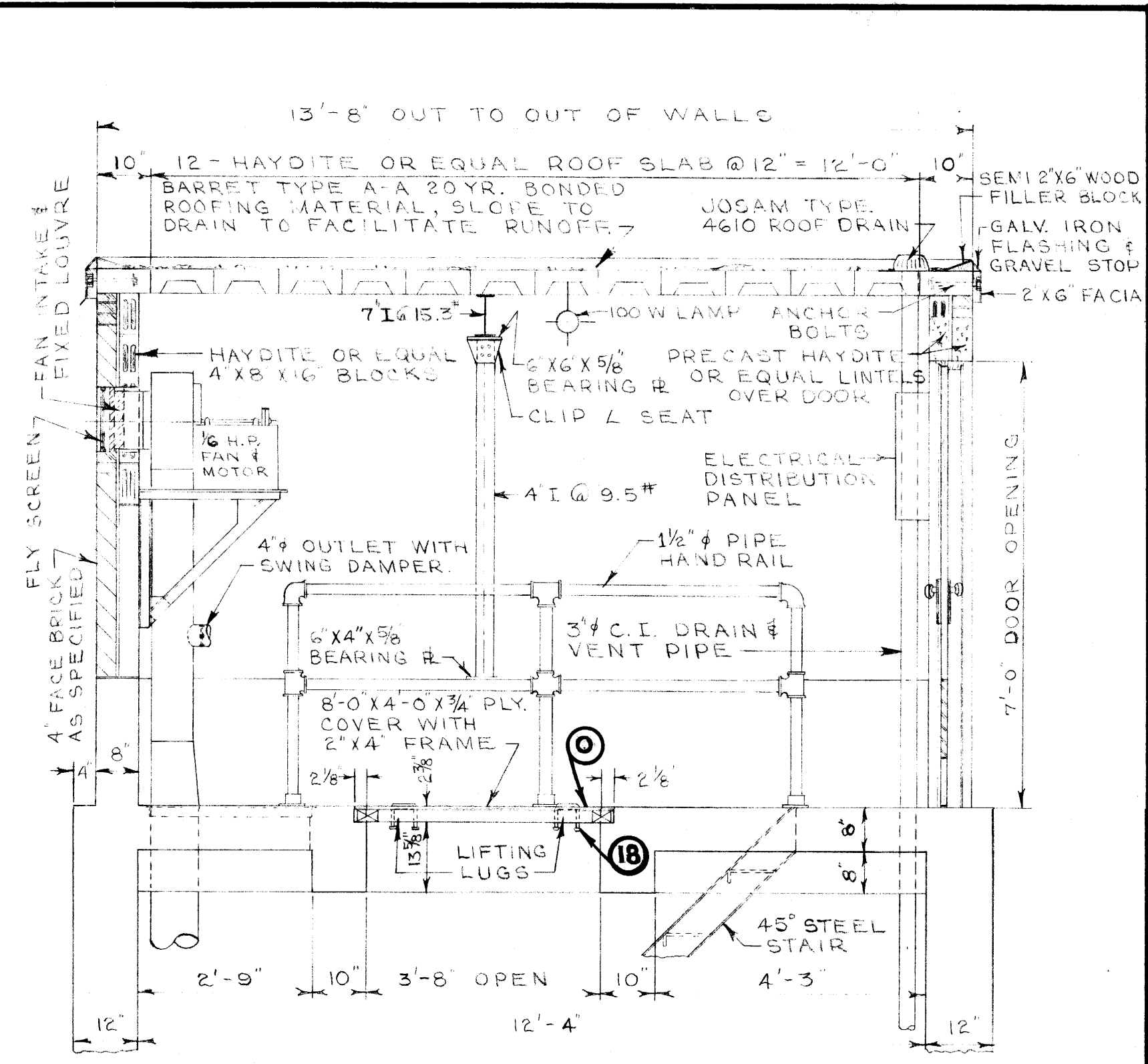
DETAILS



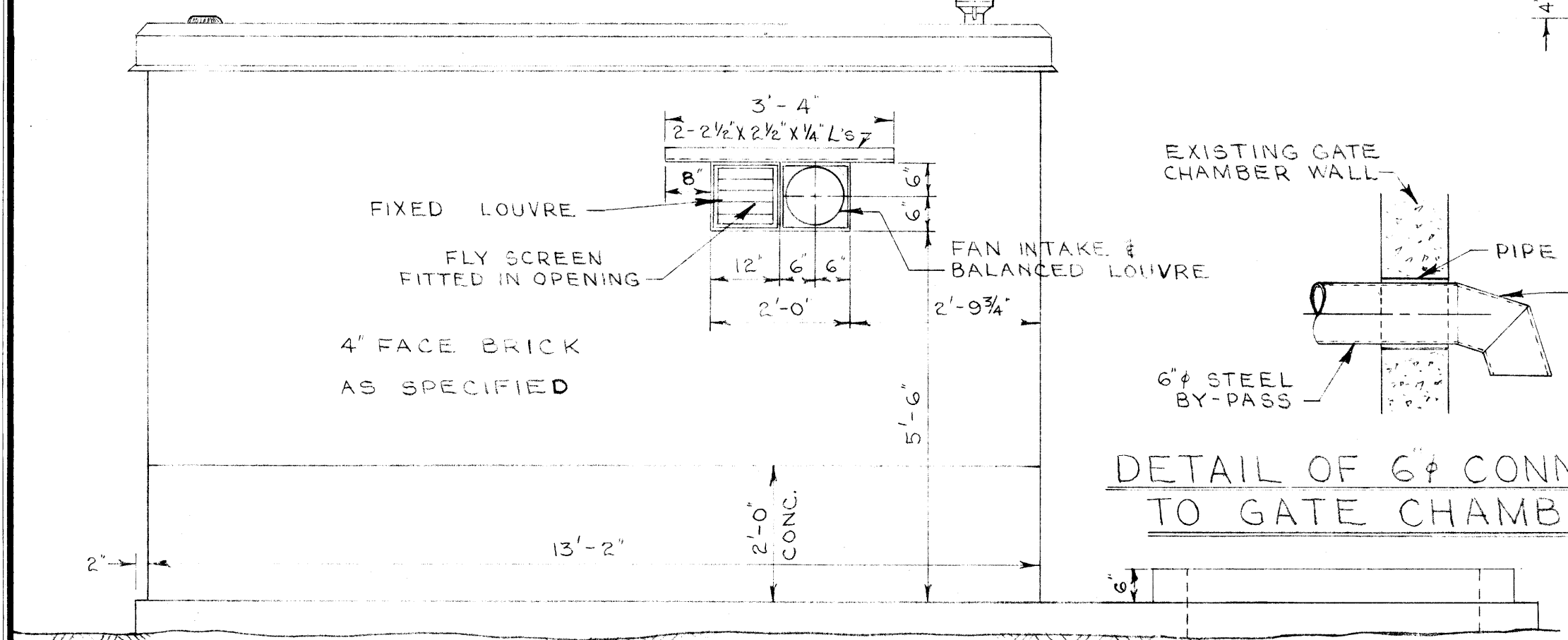
SITE PLAN HAWTHORNE STA. SCALE - 1" = 20'



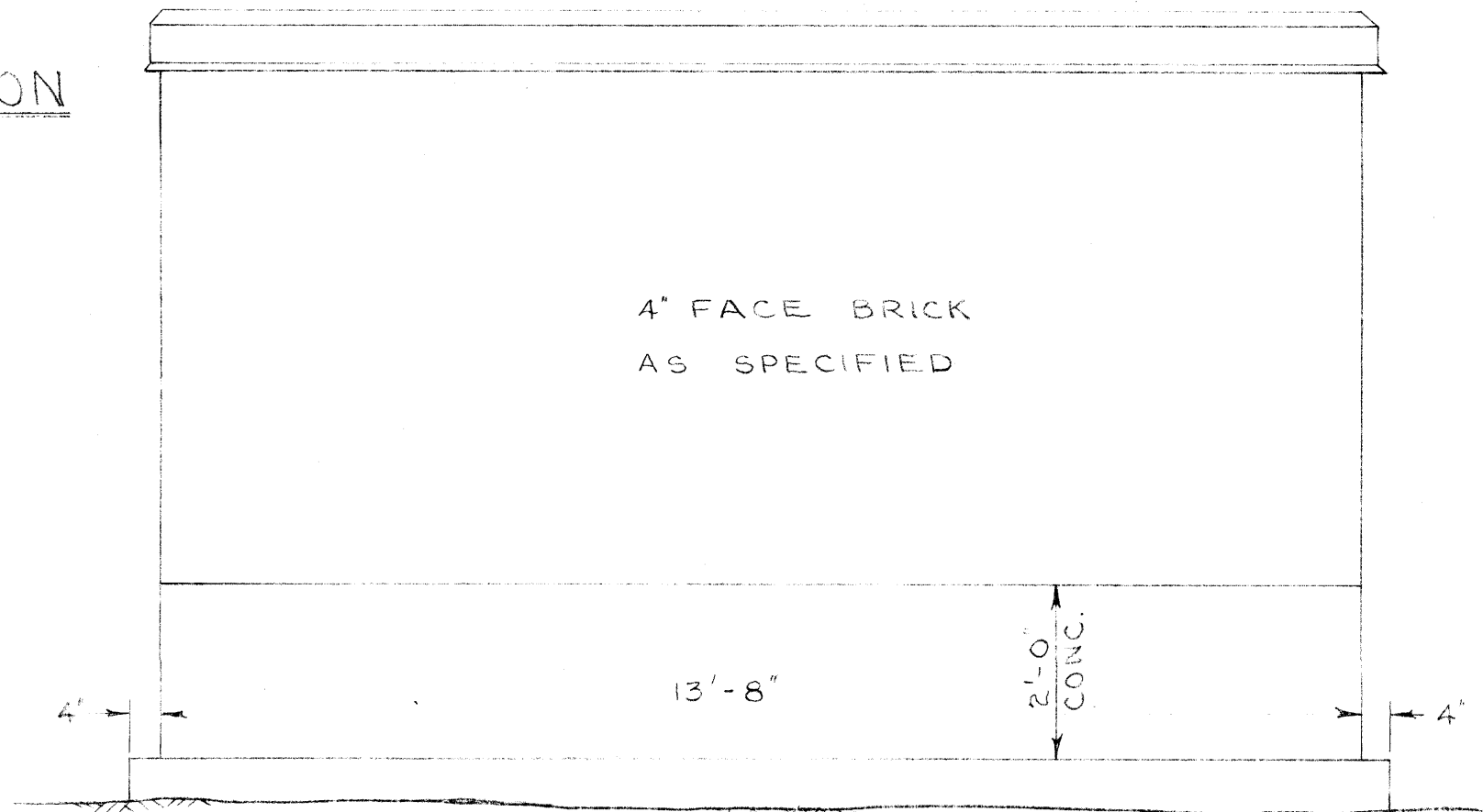
PLAN SCALE - 1/2" = 1'-0"



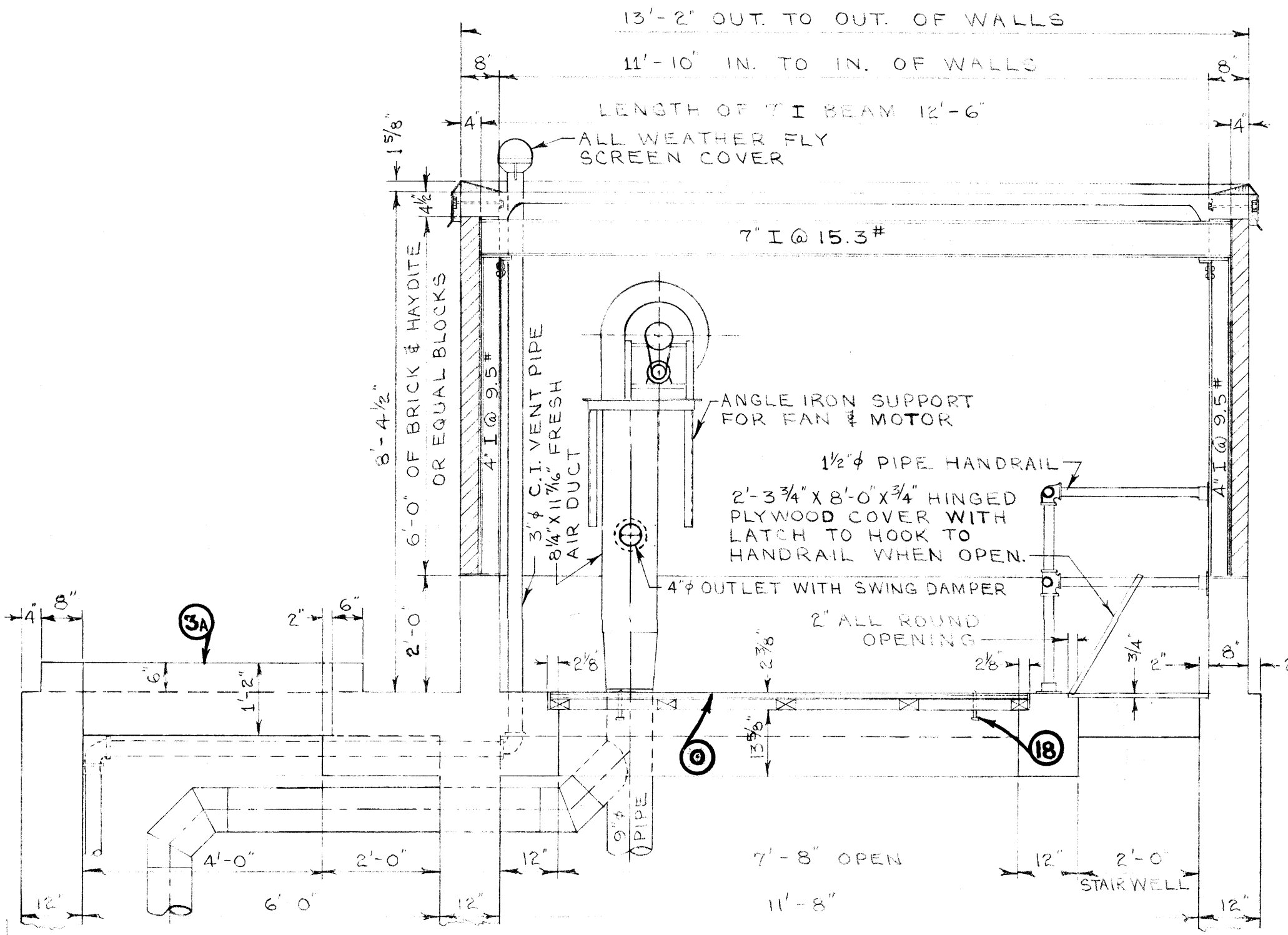
SEC. "A-A"



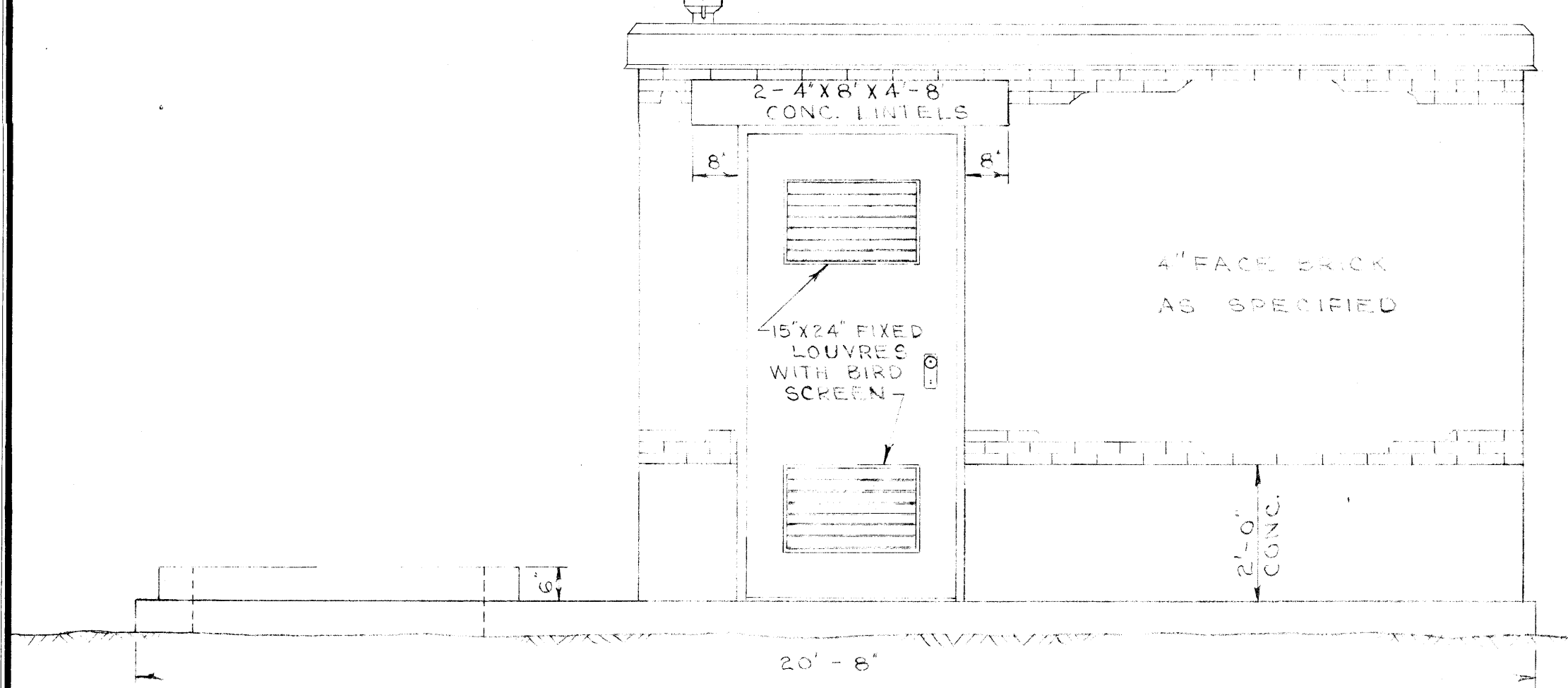
SOUTH WALL ELEV. SCALE - 1/2" = 1'-0"



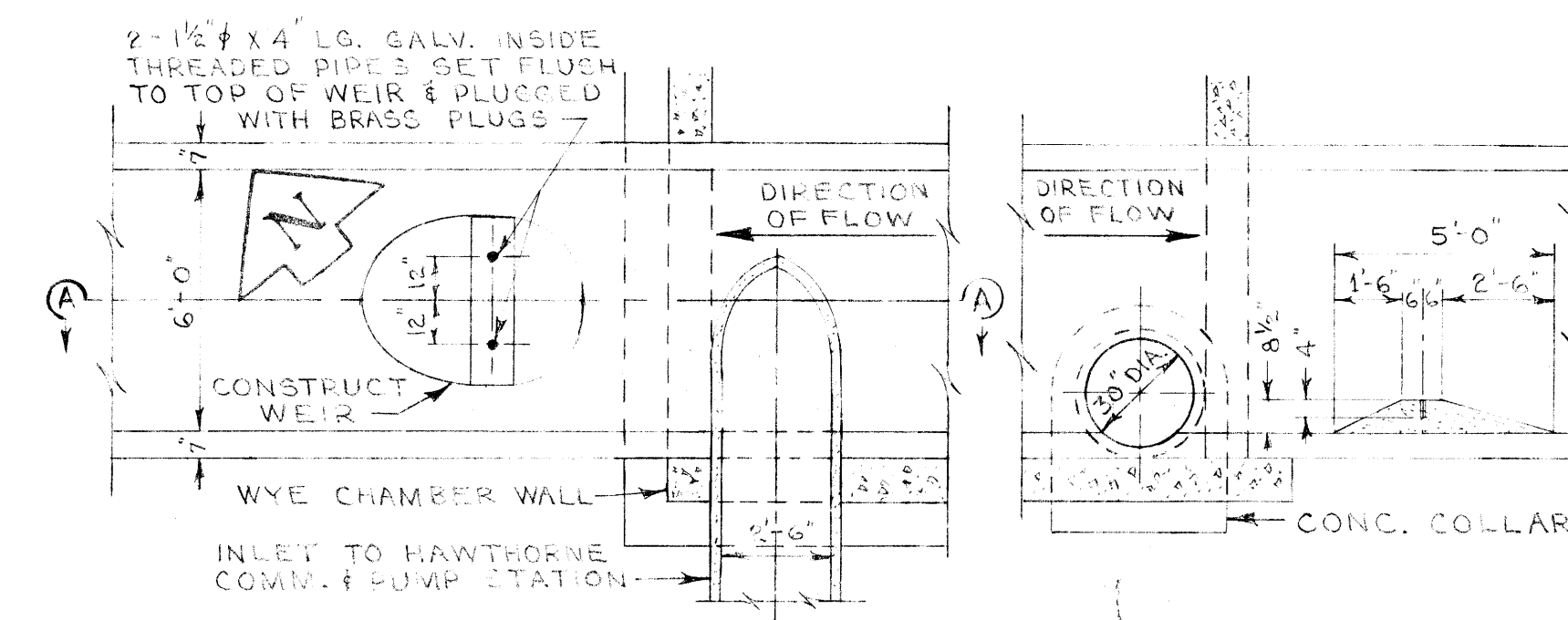
WEST WALL ELEV. EAST WALL SIMILAR.



SEC. "B-B"

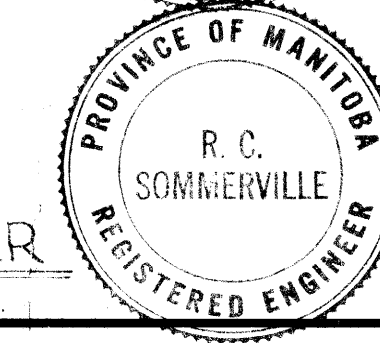
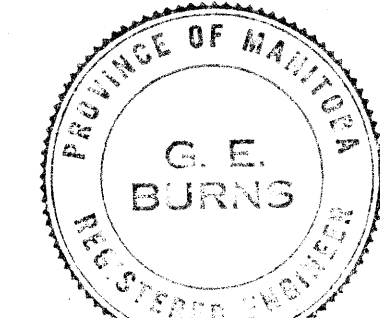


NORTH WALL ELEV.



PLAN DETAIL OF WEIR IN HAWTHORNE SEWER

NOTE: NO. --- NUMBERS REFER TO DETAIL DWGS.



REVISIONS			GREATER WINNIPEG SANITARY DISTRICT SECONDARY SEWERS		
NO.	DESCRIPTION	DATE BY	TITLE:		
1	6" FLOOD FIGHTING CONNECTION RELOCATED	10 Nov 59 S.K.	HAWTHORNE COMM. & PUMP STA.		
2	DETAIL OF 6" PIPE CONNECTION TO GATE CHAMBER	10 Nov 59 S.K.	SITE PLAN & SUPERSTRUCTURE		
APPROVED BY		DESIGNED BY	CHECKED BY	DRAWING NO.	
S.U.P.T. A. P. [Signature]		G.E. BURNS	G.E.B.	330	
DRAWN BY S.K.		DATE	SCALE		
[Signature]		30 SEPT. 59	1" = 20' AND 1/2" = 1'-0"		
CHIEF ENGINEER		Micro-filmed 1965			