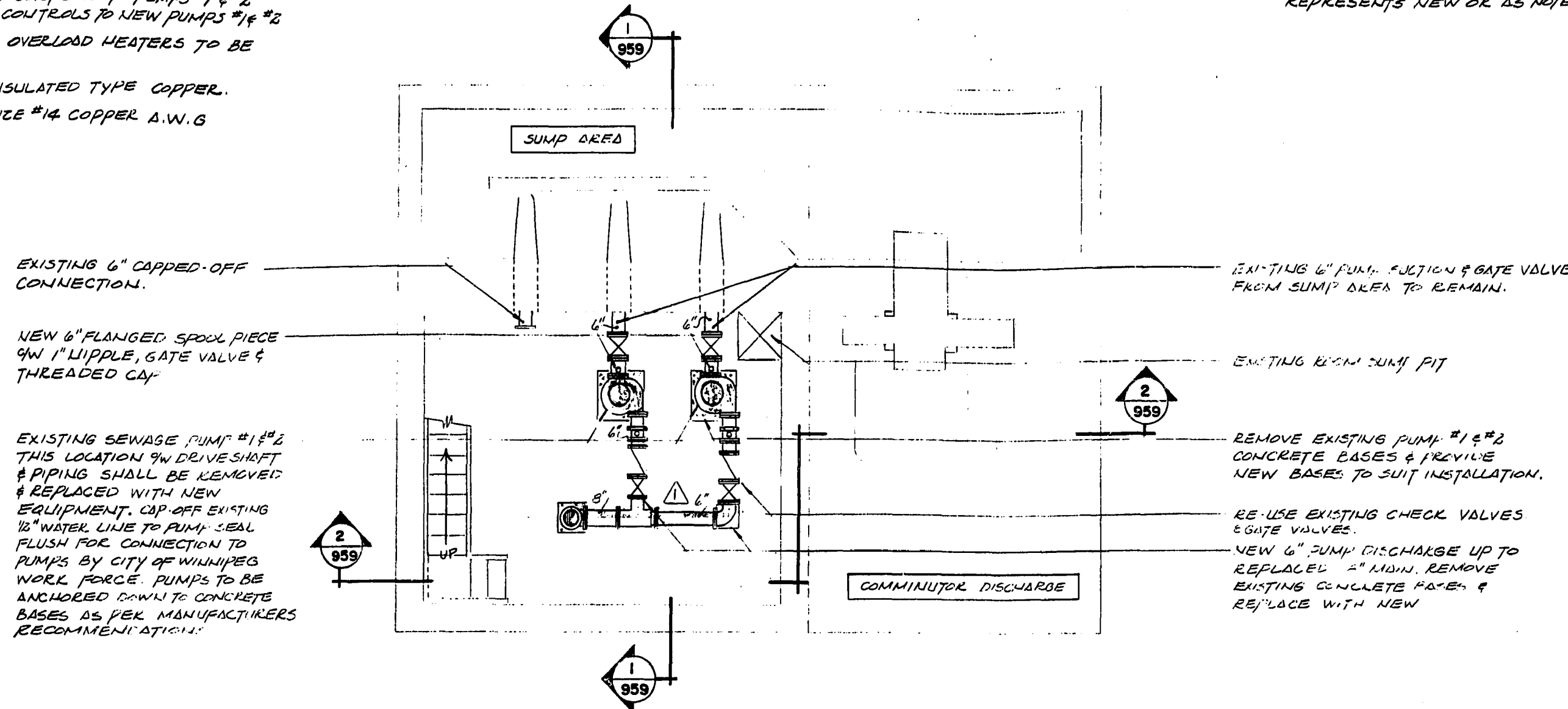


**ELECTRICAL**

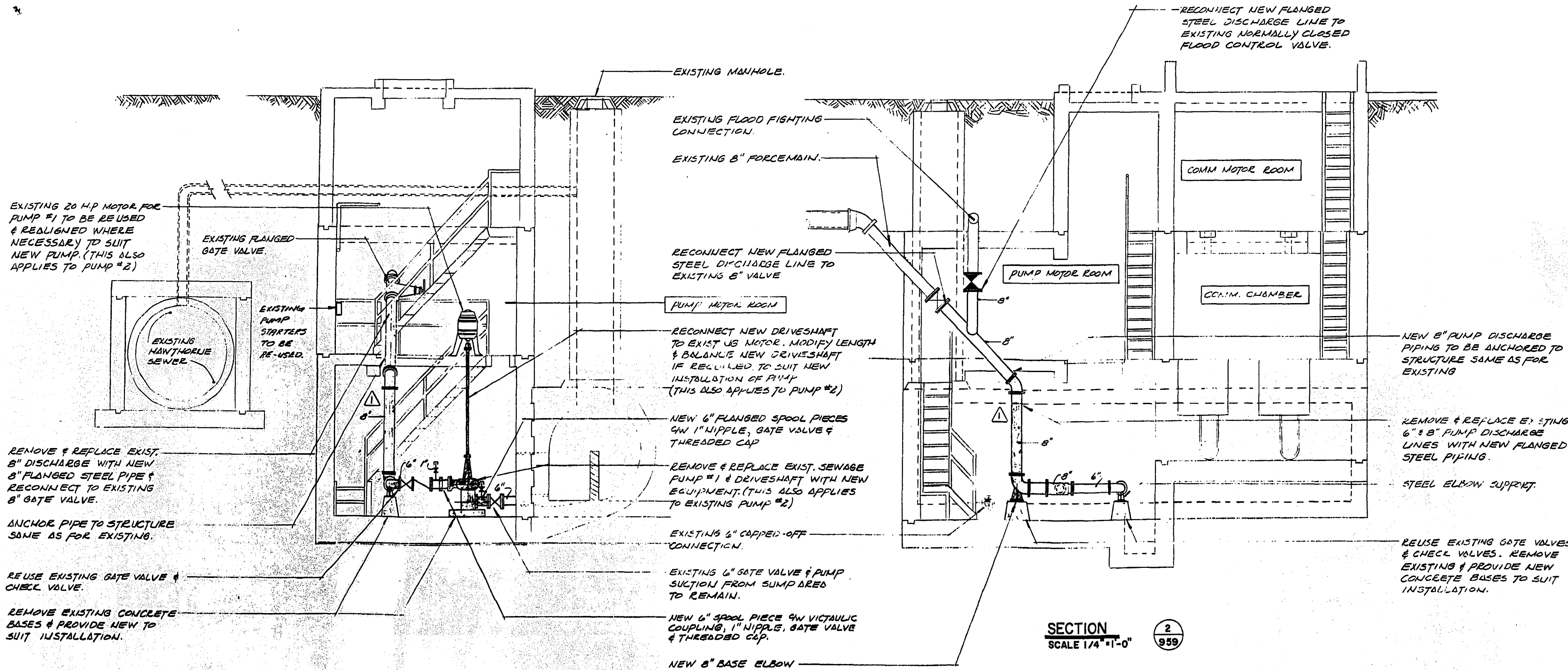
1. DISCONNECT ALL WIRING, INCLUDING CONTROLS TO PUMPS #1 & #2. RECONNECT ALL WIRING, INCLUDING CONTROLS TO NEW PUMPS #1 & #2.
2. EXISTING STARTERS TO BE REUSED. OVERLOAD HEATERS TO BE RESIZED.
3. ALL GROUND WIRING TO BE GREEN INSULATED TYPE COPPER.
4. CONTROL WIRING TO BE MINIMUM SIZE #14 COPPER A.W.G.

**NOTE:**  
ALL SHADED PIPING & EQUIPMENT REPRESENTS NEW OR AS NOTED



**PLAN OF SUMP, PUMP CHAMBER & COMM. DISCHARGE**

SCALE 1/4" = 1'-0"



**SECTION 1**  
SCALE 1/4" = 1'-0"

959

**SECTION 2**  
SCALE 1/4" = 1'-0"

959

REVISIONS			DATE	APP.
PUMP DISCHARGE PIPING REVISIONS			MAR 9/81	G.O.
No.	REVISIONS	DATE	APP.	
FIELD BOOK(S) NO.		SURVEYED BY		
LAND SURVEY PLAN(S) NO.		DATE		
B. M.				

**THE CITY OF WINNIPEG**  
WORKS & OPERATIONS DEPARTMENT  
WATERWORKS, WASTE & DISPOSAL DIVISION

**HAWTHORNE PUMPING STATION  
PUMP REPLACEMENT**

DESIGNED BY	DRAWN BY
CHECKED BY	DATE
R.M.S.	AUG / 78
APPROVED BY	
G.O.	
SCALE	DRAWING NO.
1/4" = 1'-0"	<b>959</b>

**Scouten Mitchell Sigurdson**  
Consulting Engineers  
300-287 Smith Street, Winnipeg, Manitoba R3C 1L3 Telephone (204) 942-3111

