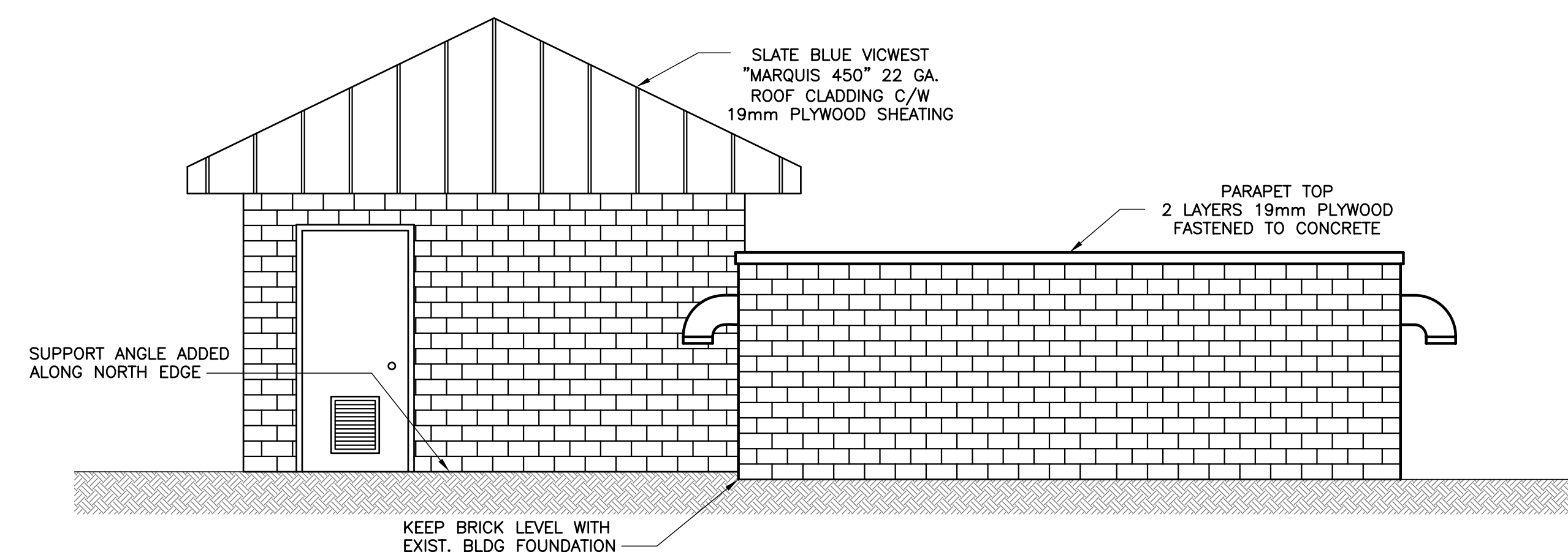
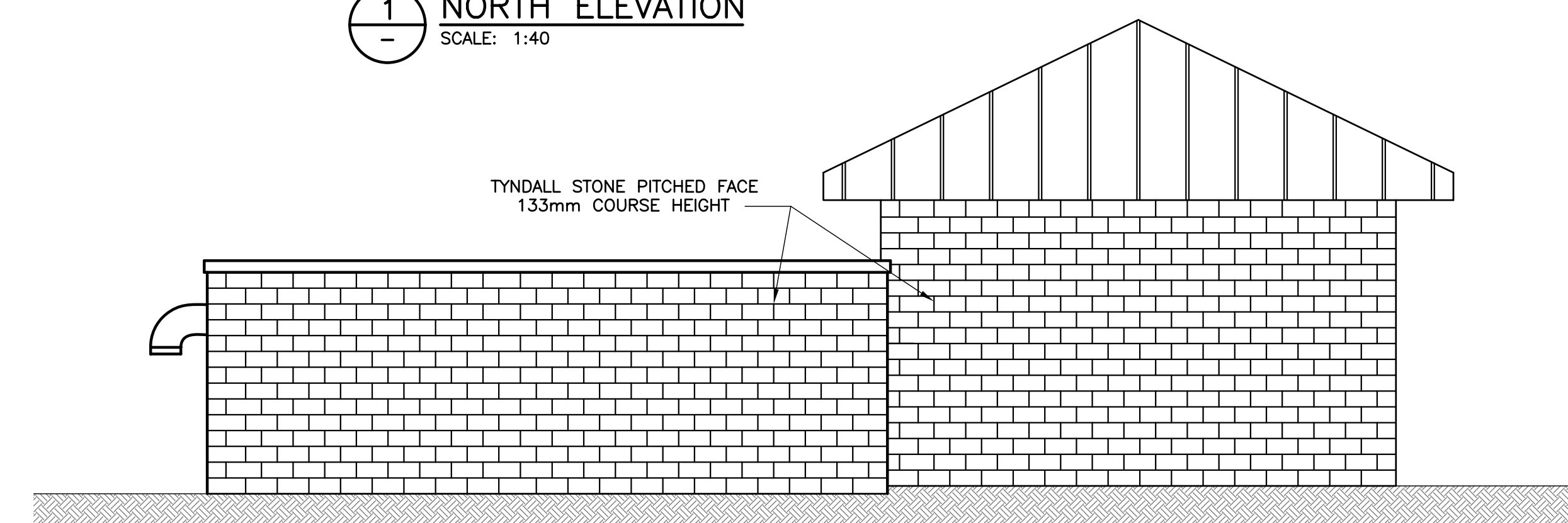


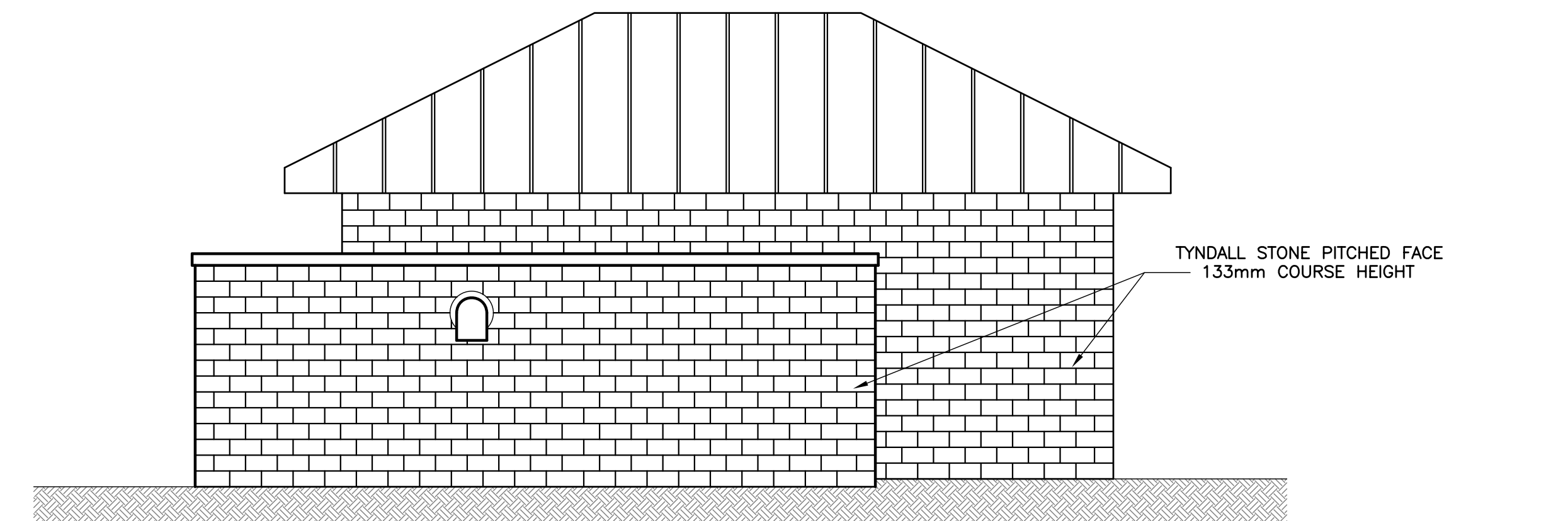
**F S7 SECTION - EXIST. BLDG & EXTENSION**  
SCALE: 1:25



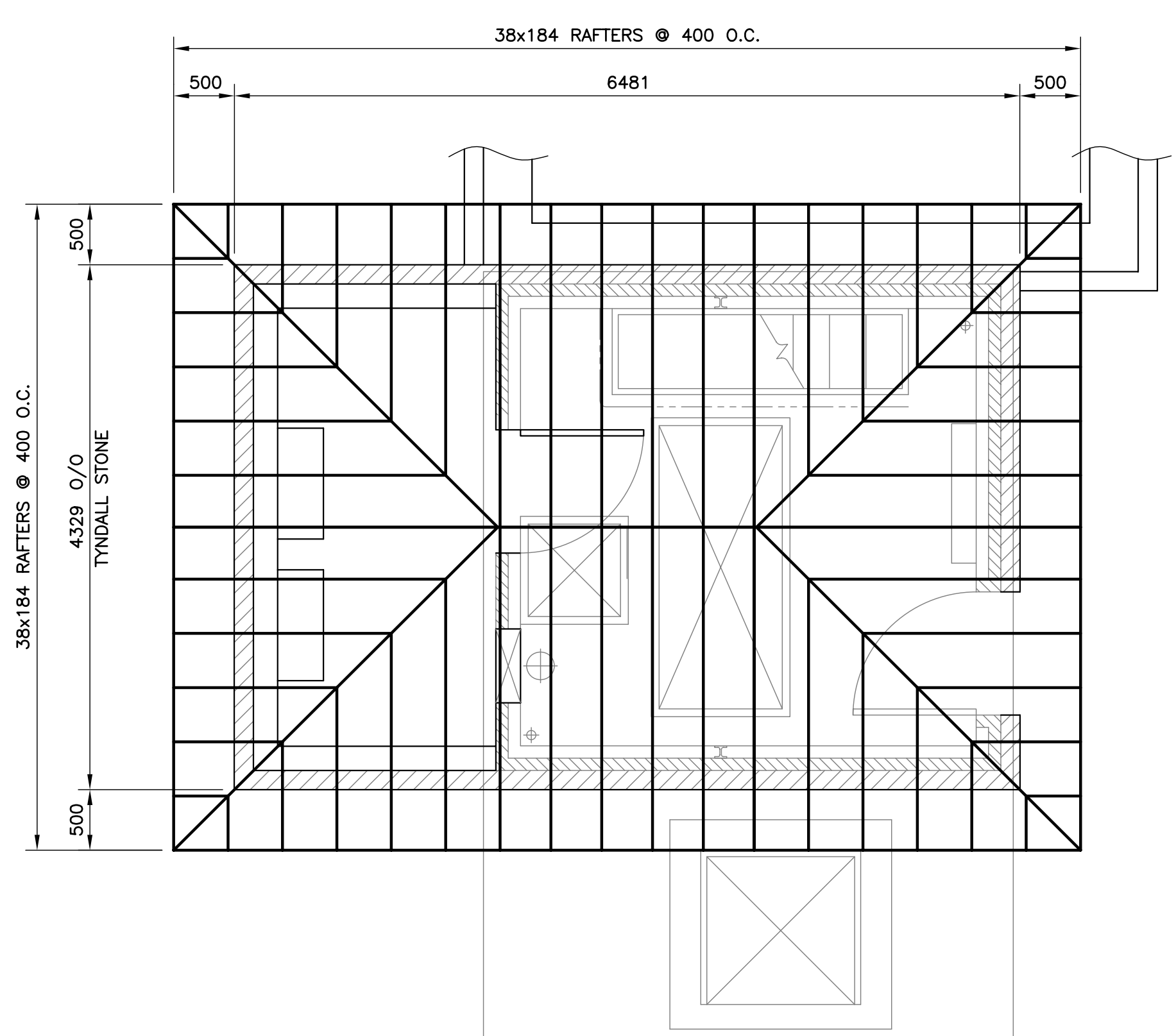
**1 NORTH ELEVATION**  
SCALE: 1:40



**2 SOUTH ELEVATION**  
SCALE: 1:40



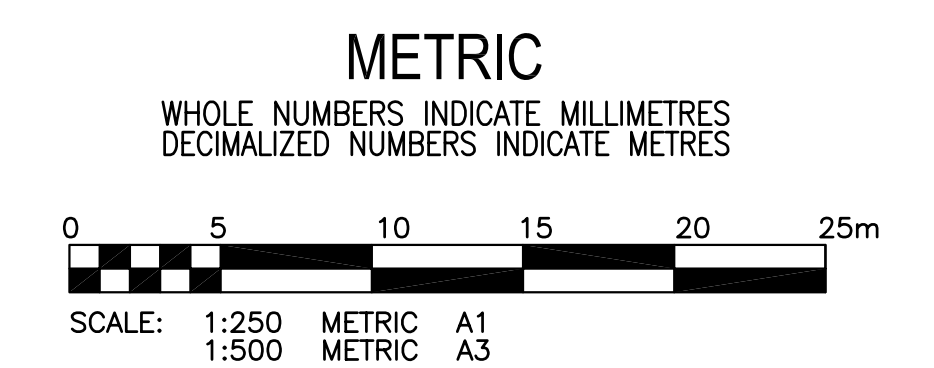
**3 WEST ELEVATION**  
SCALE: 1:40



**4 ROOF FRAMING PLAN**  
SCALE: 1:40

**AS-CONSTRUCTED**  
WATER & WASTE DEPARTMENT

PROJECT COMPLETION DATE : 20 JULY 06



B.M. XX-XXX ELEV. XXX.XXX	<b>KGS GROUP</b> CONSULTING ENGINEERS & PROJECT MANAGERS WINNIPEG (204) 896-1209 THUNDER BAY (807) 345-2233	ENGINEER'S SEAL	<b>THE CITY OF WINNIPEG</b> WATER & WASTE DEPARTMENT HAWTHORNE FLOOD PUMPING STATION UPGRADE STRUCTURAL-SUPERSTRUCTURE GENERAL ARRANGEMENT	SHEET 08 OF 24
		ORIGINAL DRAWING SIGNED BY: C.M. SIEPMAN 12/02/07 DD/MM/YY		CAD FILE DRAWING NUMBER 05-0107-13-08 CITY DRAWING NUMBER LD-3245
DESIGNED BY: CMS	CHECKED BY: CMS	SCALE: AS NOTED	CONSULTANT DRAWING NO. 05-0107-13-08	
DRAWN BY: EdC	APPROVED BY:	RELEASED FOR CONSTRUCTION:		
1 AS-CONSTRUCTED 06/12/13 CMS		DATE 05/11/08		
0 ISSUED FOR CONSTRUCTION 05/12/07 CMS				
NO. REVISIONS	DATE	BY		

**APEGM**  
Certificate of Authorization  
KGS Group  
No. 245 Expiry: April 30, 2007

COWLEGGEND