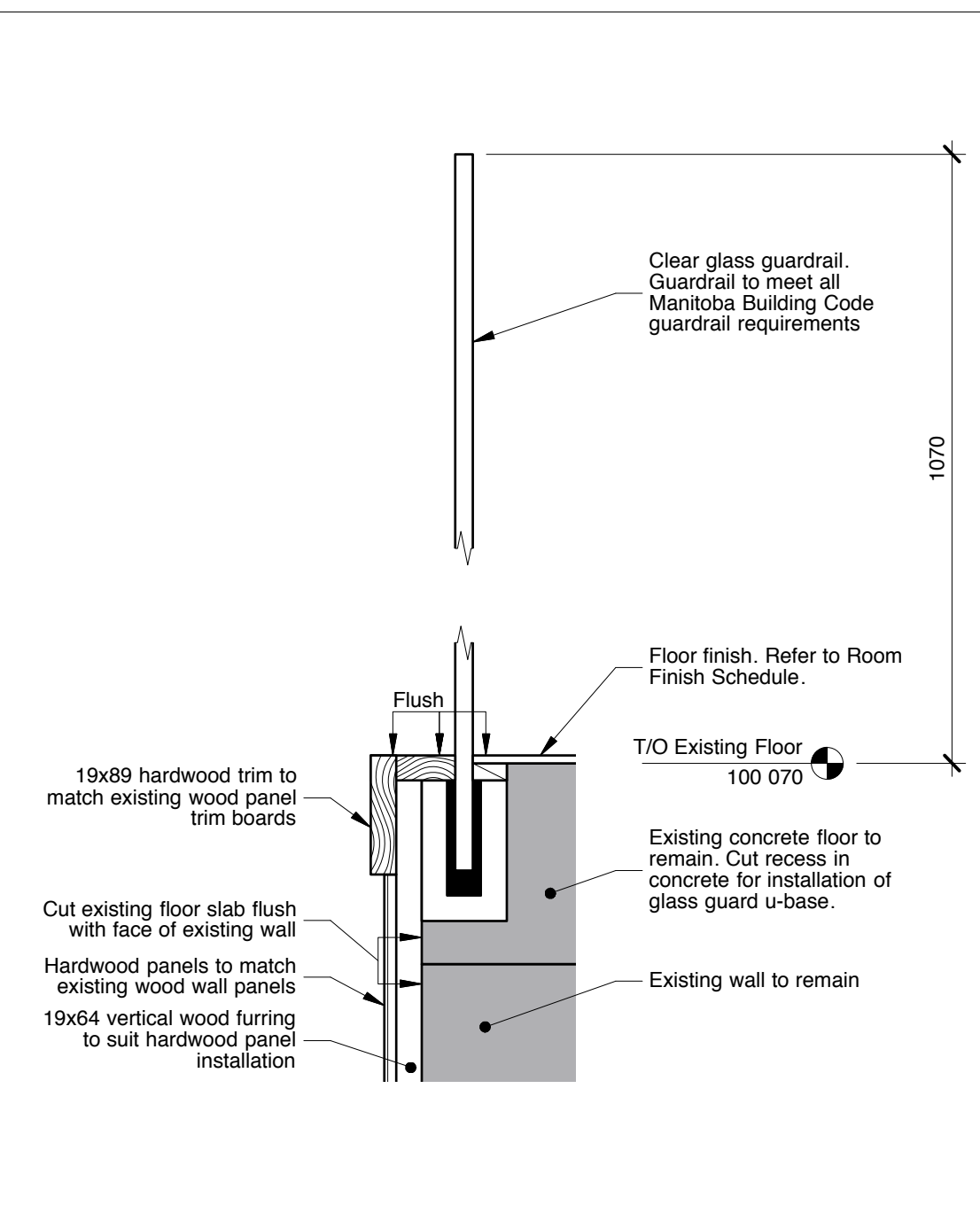
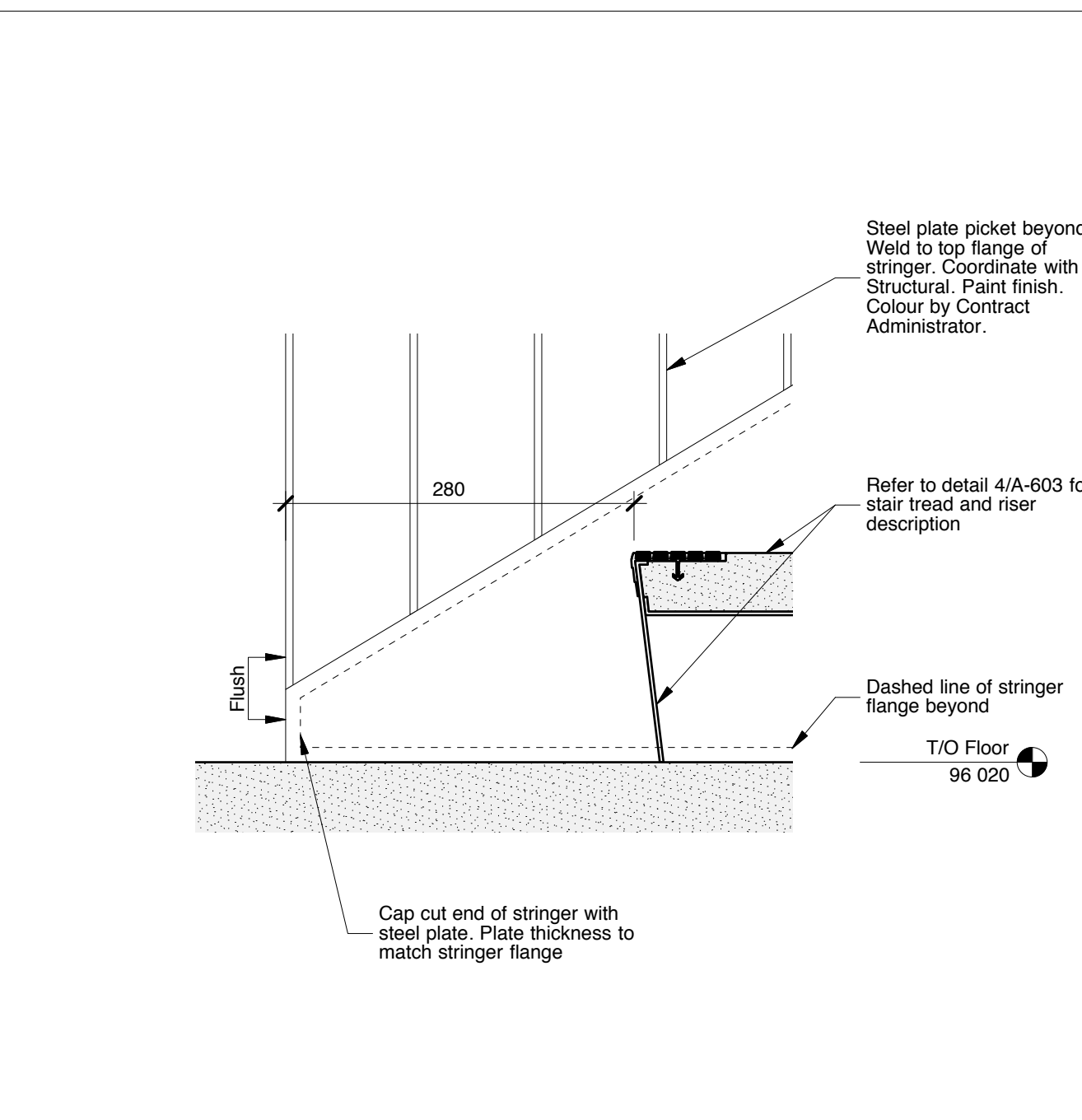


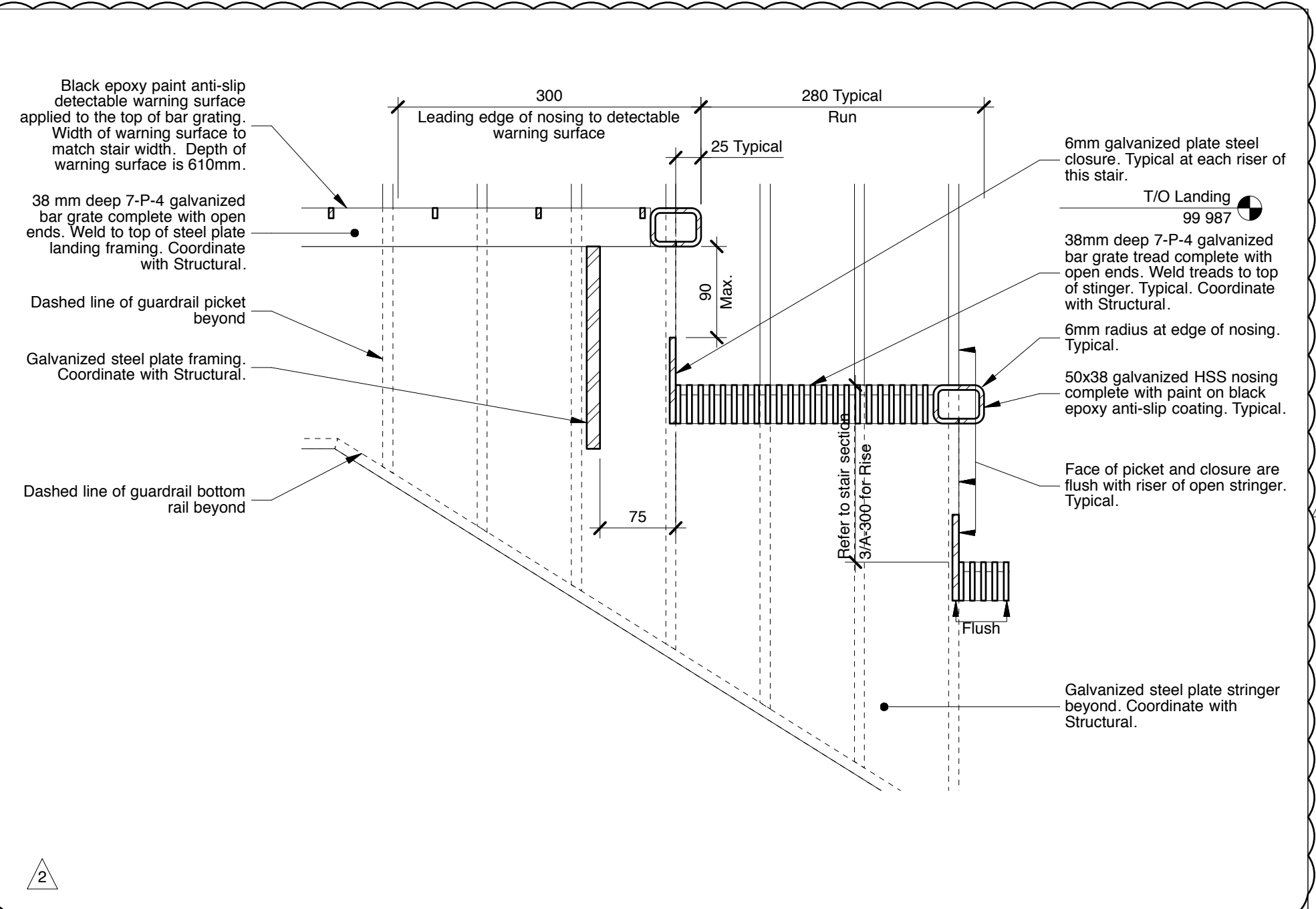
5 Section Detail - Exit Stair 001 Guardrail/Handrail  
A-603 1:5



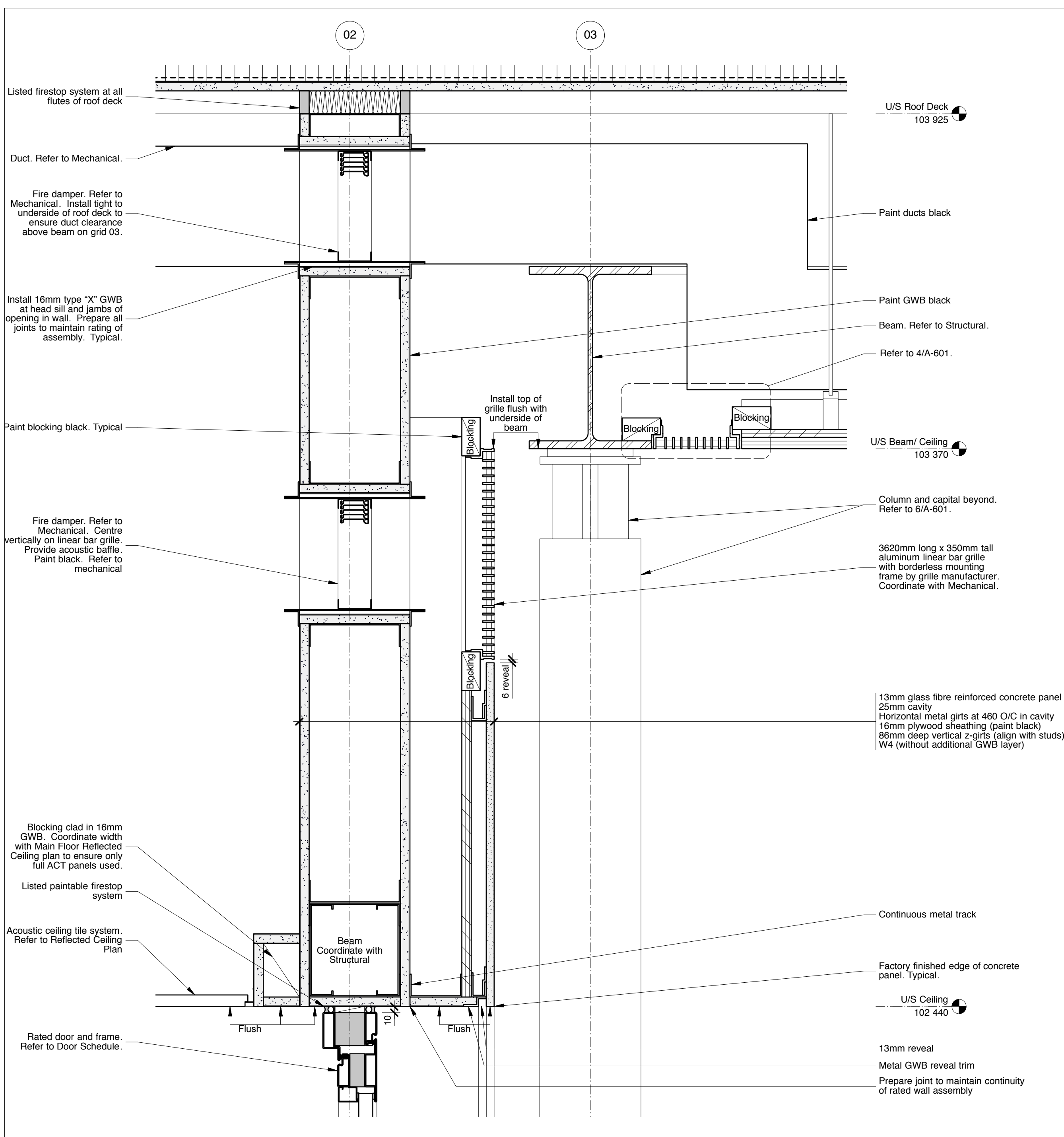
7 Section Detail - Glass Guardrail at Entry Area 100  
A-603 1:5



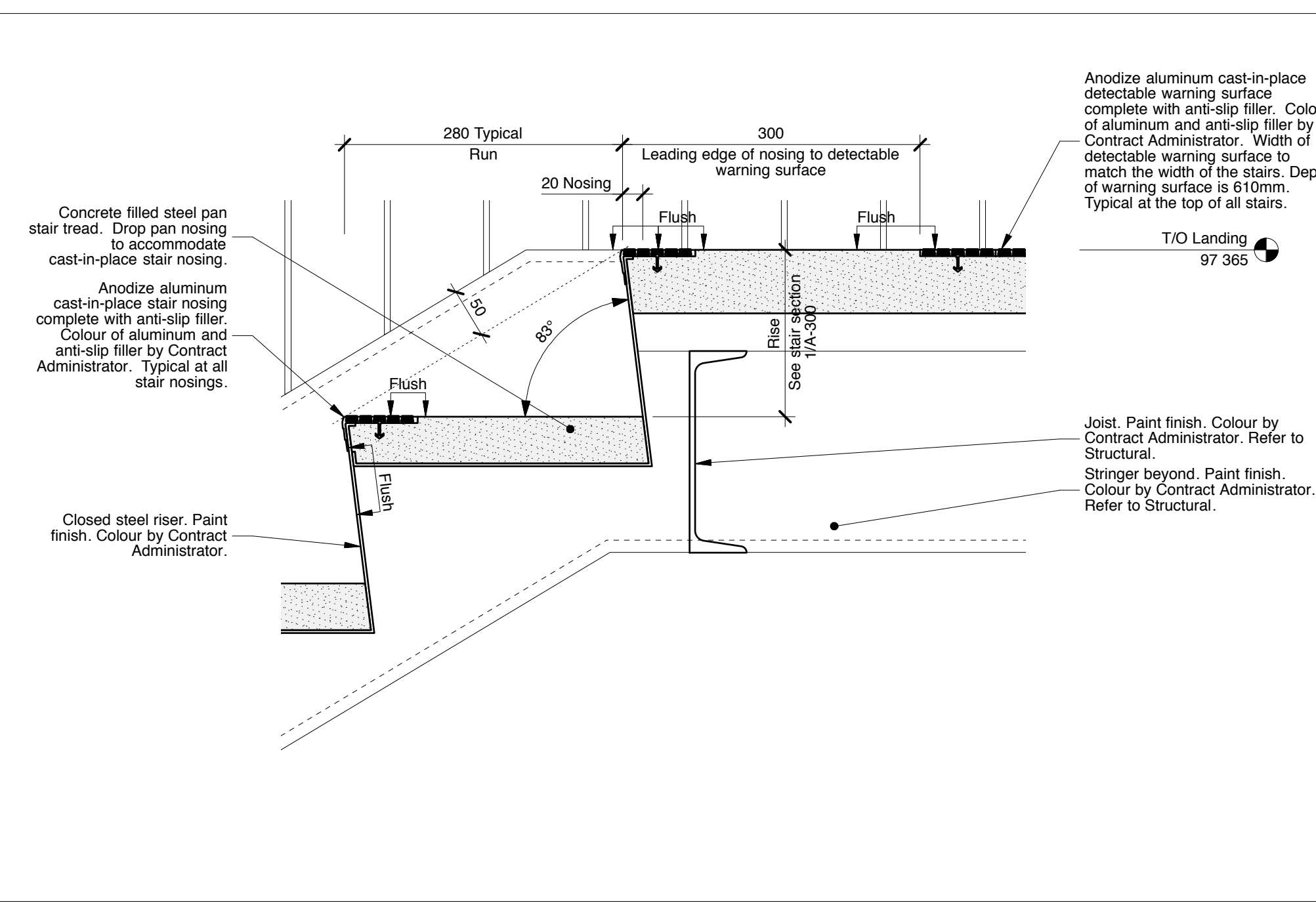
6 Section Detail - Exit Stair 001 Guard Rail/Stringer at Bottom Tread  
A-603 1:5



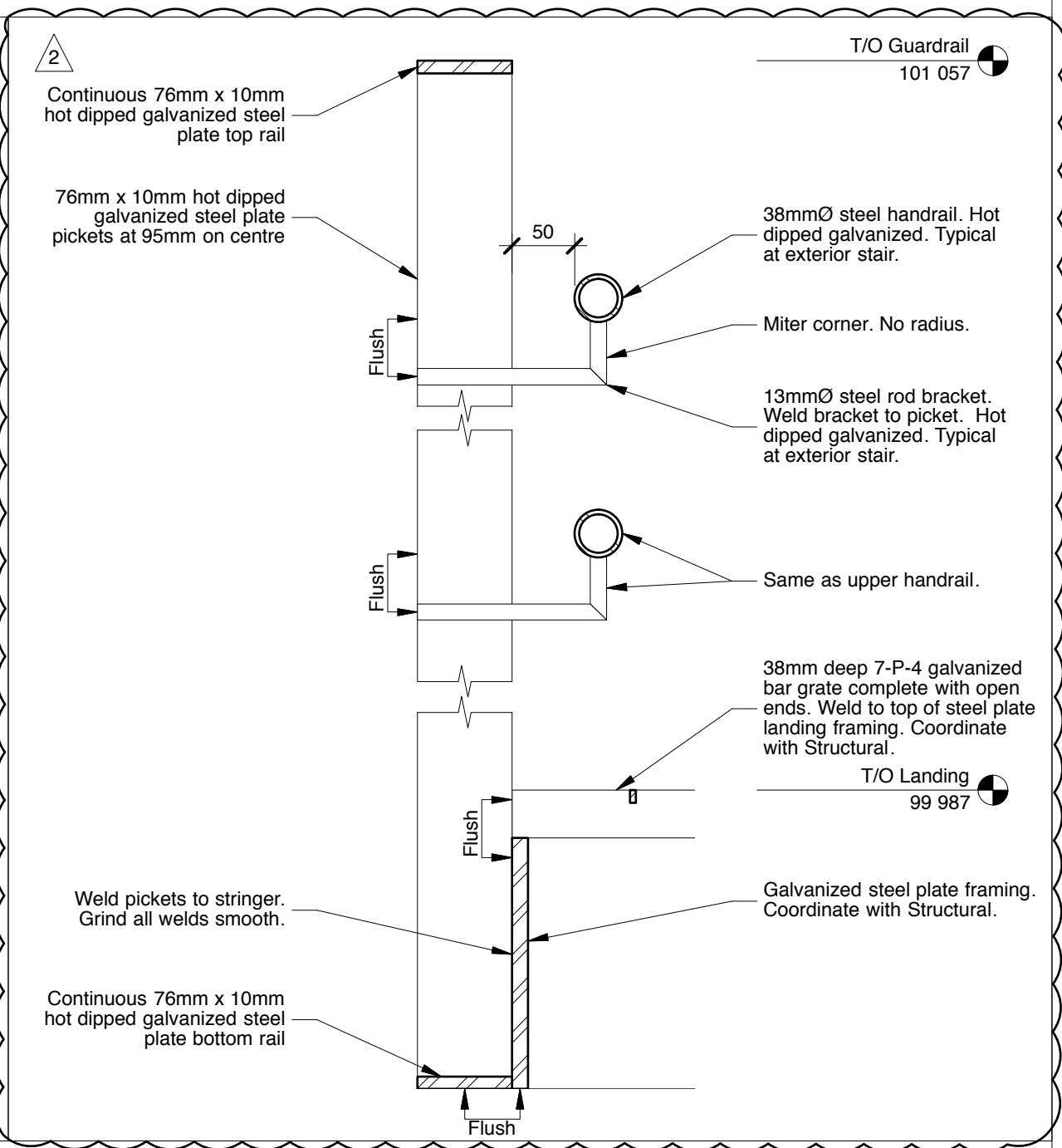
3 Section Detail - Typical Exterior Exit Stair Tread  
A-603 1:5



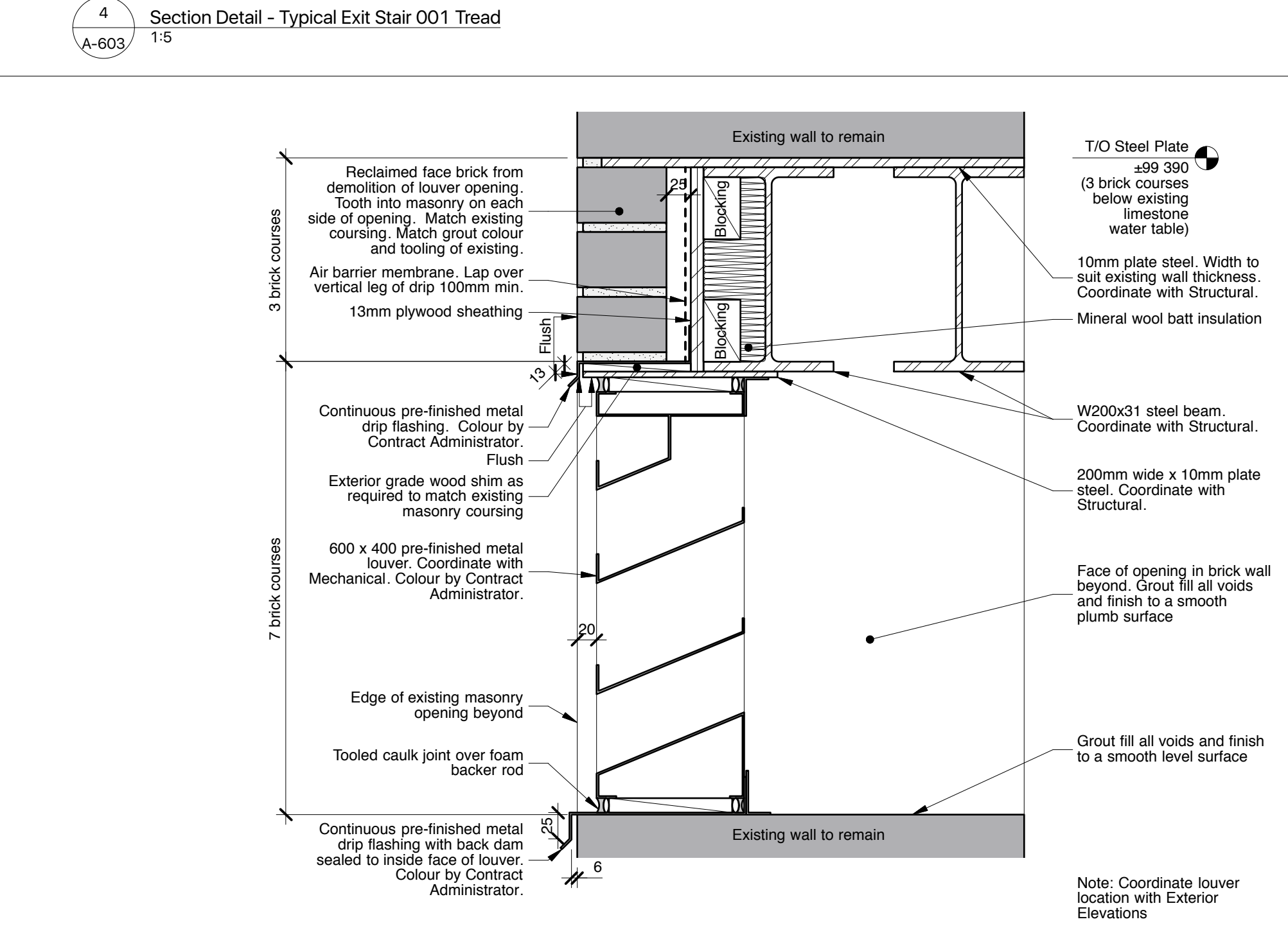
9 Section Detail - Return Air Grille in the GWB Ceiling  
A-603 1:5



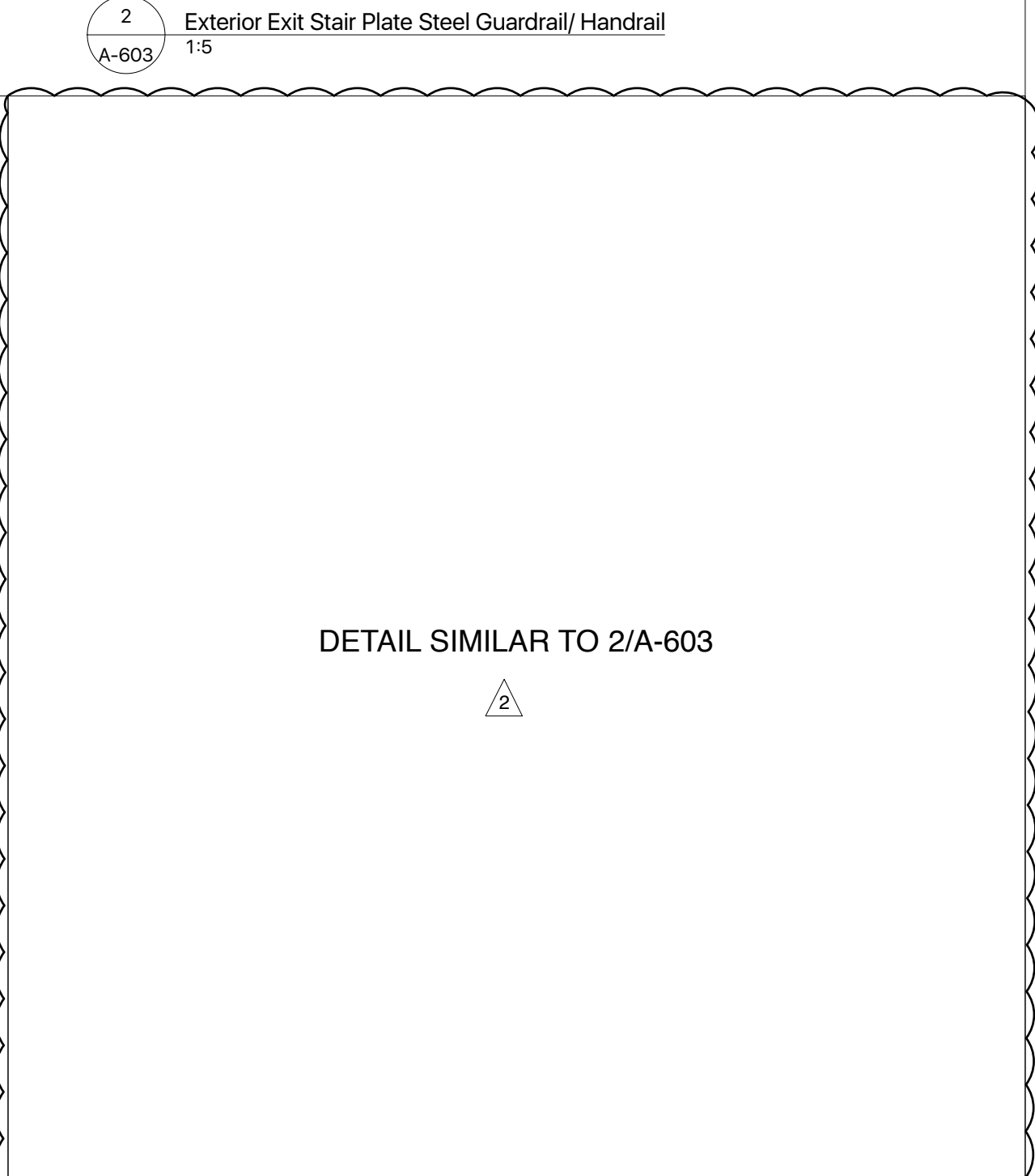
4 Section Detail - Typical Exit Stair 001 Tread  
A-603 1:5



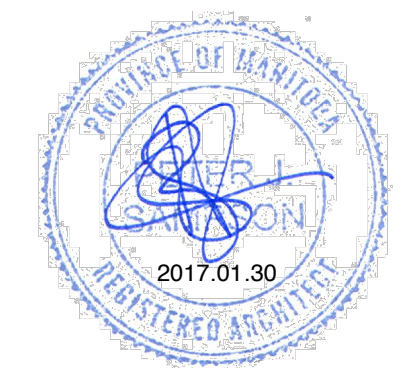
2 Exterior Exit Stair Plate Steel Guardrail/Handrail  
A-603 1:5



8 Section Detail - Mechanical Louver in Existing Brick Wall  
A-603 1:5



1 Section Detail - Exterior Stair Landing Bar Grate Guardrail  
A-603 1:5



This drawing must not be scaled. The contractors shall verify all dimensions and other data on site prior to commencement of work. Discrepancies, errors, and omissions are to be reported to Public City Architecture Inc. prior to proceeding with the Work.

Drawings and specifications as instruments of service are the property of Public City Architecture Inc., and when made, must bear their name. All prints to be returned to Public City Architecture Inc. upon request.