

This drawing must not be scaled. The contractor shall verify all dimensions and other data on site prior to commencement of work. Discrepancies, errors, and omissions are to be reported to Public City Architecture Inc. prior to proceeding with the Work.

Drawings and specifications as instruments of service are the property of Public City Architecture Inc. and when made, must bear their name. All prints to be returned to Public City Architecture Inc. upon request.

Project
Cornish Library Renovation

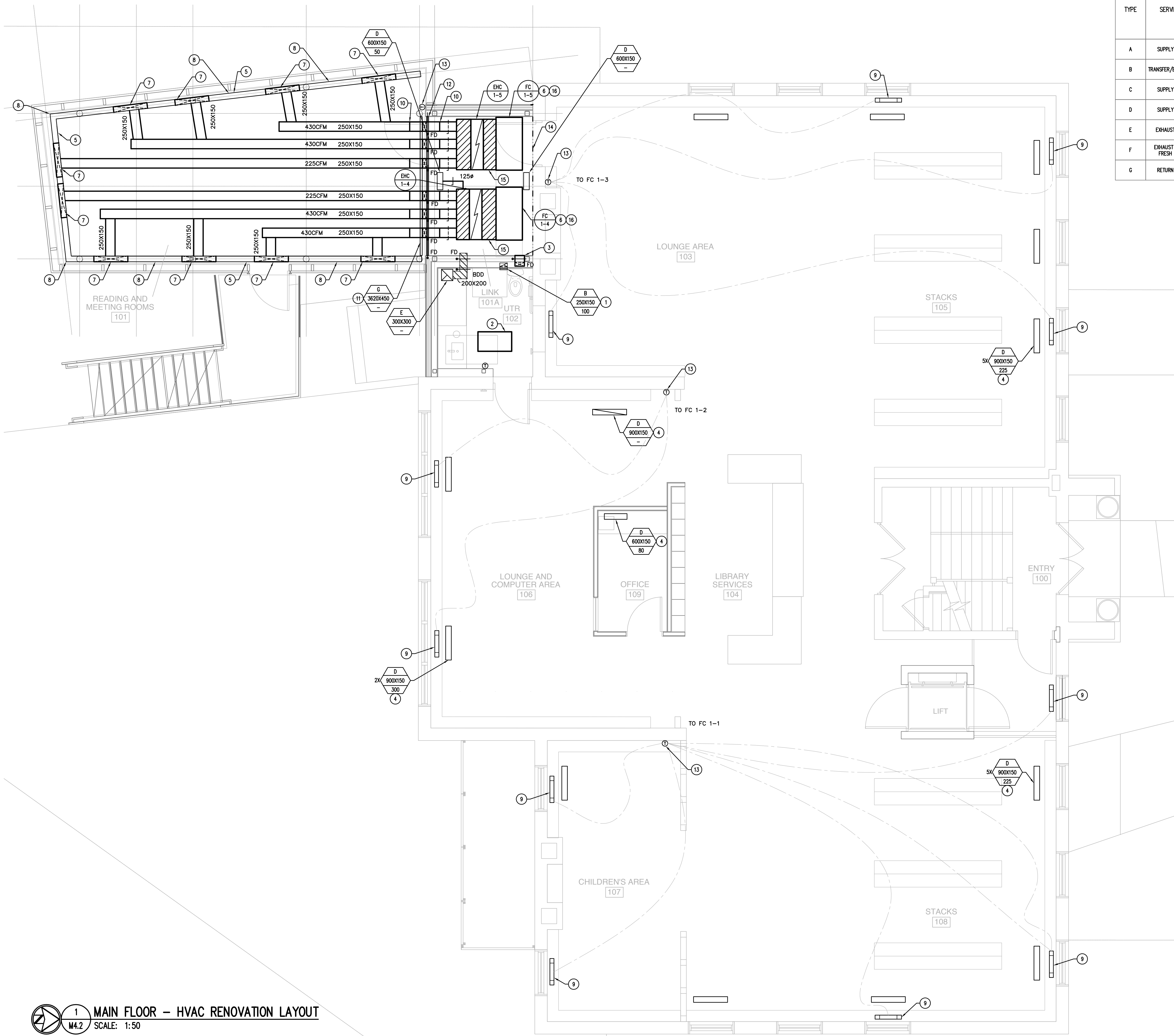
Drawing
MAIN FLOOR - HVAC RENOVATION LAYOUT

Drawn By
TL
Scale
As noted
Reviewed By
ATS
Drawing No.
M4.2

Date
2017.11.28
Project No.
1503a

GRILLE, DIFFUSER & LOUVER SCHEDULE

TYPE	SERVICE	MAKE	MODEL	REMARKS
A	SUPPLY AIR	PRICE	SCD/31/3C	COLOURS AND FINISHES SELECTED BY CONTRACT ADMINISTRATOR.
B	TRANSFER/EXHAUST	PRICE	530	COLOURS AND FINISHES SELECTED BY CONTRACT ADMINISTRATOR.
C	SUPPLY AIR	PRICE	RCD	COLOURS AND FINISHES SELECTED BY CONTRACT ADMINISTRATOR.
D	SUPPLY AIR	PRICE	LBPH/16A	HEAVY DUTY NARROW FACE BORDER 125. REFER TO ARCHITECTURAL DETAIL FOR INSTALLATION DETAILS.
E	EXHAUST AIR	PRICE	80	COLOURS AND FINISHES SELECTED BY CONTRACT ADMINISTRATOR.
F	EXHAUST AIR/ FRESH AIR	PRICE	DE635	DRAINABLE BLADES. FINISH COLOUR SELECTED BY CONTRACT ADMINISTRATOR.
G	RETURN AIR	PRICE	LBP/16A	HEAVY DUTY NARROW FACE BORDER 125. REFER TO ARCHITECTURAL DETAIL FOR INSTALLATION DETAILS.



GENERAL NOTES:

- THIS DRAWING IS DIAGRAMMATIC ONLY. DO NOT SCALE.
- THE MECHANICAL SYSTEMS SHOWN ARE APPROXIMATE IN LOCATION ONLY. CONTRACTOR TO VERIFY EXACT LOCATION OF SYSTEMS BEING MODIFIED ON SITE PRIOR TO COMMENCEMENT OF WORK.
- ALL WORK SHALL COMPLY WITH THE MOST CURRENT VERSION OF ALL APPLICABLE CODES AND STANDARDS, WHICH SHALL BE CONSIDERED PART OF THESE CONTRACT DOCUMENTS. IN THE CASE OF CONFLICTING REQUIREMENTS, THE MOST STRINGENT REGULATION SHALL PREVAIL.
- CONTRACTOR TO MAINTAIN CURRENT AND READILY REVIEWABLE AS-BUILT DRAWINGS ACCURATELY REFLECTING SITE INSTALLATIONS.
- CONTRACTOR TO ENSURE ALL MATERIALS MODIFIED OR INSTALLED IN AN AIR PLENUM ARE RATED FOR SUCH USE.
- CONTRACTOR TO MAINTAIN DIGITAL PHOTOGRAPHIC RECORDS OF ALL INSTALLATIONS PRIOR TO CONCEALMENT BY SUPPORTING TRADES.
- FLARE DUCTWORK AS REQUIRED TO SUIT CONNECTION SIZE OR OPENING TO MECHANICAL EQUIPMENT.
- PROVIDE FIRE DAMPERS AT EACH LOCATION WHERE A DUCT PENETRATES A FIRE SEPARATION OR FIRE WALL. REFER TO ARCHITECTURAL PLANS FOR LOCATIONS OF FIRE SEPARATIONS AND FIRE WALLS, AND THEIR RATINGS.
- PROVIDE CEILING DAMPERS FOR ALL DIFFUSERS, GRILLES OR REGISTERS LOCATED IN FIRE RATED CEILINGS. DIFFUSERS TO BE PROTECTED BY CK 2000 THERMAL BLANKET WHERE REQUIRED. REFER TO ARCHITECTURAL DRAWINGS FOR LOCATIONS OF FIRE RATED CEILINGS.
- DUCTS BEING INSTALLED TO BE WIPED CLEAN AND HAVE SEAMS SEALED AS PER MECHANICAL SPECIFICATION.
- MECHANICAL COMPONENTS BEING STORED ON SITE TO BE PROTECTED UNTIL INSTALLATION INTO SYSTEM.
- NO EXPOSED CONDUIT SHALL BE ALLOWED ON MAIN FLOOR.

DRAWING NOTES:

- 250X100 EXHAUST RISER FROM BELOW TO EXHAUST GRILLE AT HIGH LEVEL.
- 750W RADIANT PANEL BY ELECTRICAL SUBCONTRACTOR. THERMOSTAT, LOW VOLTAGE TRANSFORMER, AND WIRING BY MECHANICAL SUBCONTRACTOR.
- 250X100 VENTILATION DUCT FROM BELOW TO DISCHARGE INTO FAN COIL PLENUM. BALANCE TO 155 CFM.
- FLOOR DIFFUSER. COORDINATE FLUSH MOUNTING WITH ARCHITECTURAL DETAIL. COORDINATE EXACT LOCATIONS WITH CONTRACT ADMINISTRATOR.
- PROVIDE ONE CONTINUOUS TYPE 'D' GRILLE ALONG CEILING AS SHOWN. PROVIDE MULTIPLE SECTIONS WITH ALIGNMENT PLATES. PROVIDE MITERED CORNER MODULES AT CHANGES OF DIRECTION.
- FAN COIL TO BE SUSPENDED FROM STRUCTURE COMPLETE WITH SPRING VIBRATION ISOLATORS. GRAVITY DRAIN CONDENSATE TO NEAREST APPROPRIATE DRAIN IN WASHROOM.
- PROVIDE SHEET METAL SUPPLY PLENUM ABOVE 900X150 PORTION OF GRILLE TO DIRECT AIR INTO OCCUPIED SPACE.
- SECTION OF GRILLE NOT USED AS SUPPLY SHALL BE BLANKED OFF.
- NEW HEATER AND LOW VOLTAGE RELAY BY ELECTRICAL SUBCONTRACTOR. THERMOSTAT AND CONTROL WIRING BY MECHANICAL SUBCONTRACTOR. THERMOSTAT TO CONTROL FAN COIL AND ELECTRICAL HEAT.
- PROVIDE MAXIMUM 45° TRANSITION FOR SUPPLY DUCTWORK TO OFFSET ABOVE I-BEAM.
- 3620X450 TRANSFER AIR GRILLE IN SIDE OF BULKHEAD. PROVIDE IN MULTIPLE SECTIONS AS REQUIRED. GRILLE TO APPEAR AS ONE CONTINUOUS PIECE.
- 3620X200 TRANSFER AIR OPENING AND FIRE DAMPER(S). PROVIDE AS MULTIPLE SECTIONS. REFER TO ARCHITECTURAL SECTIONS AND ELEVATIONS FOR HEIGHT.
- COORDINATE FINAL PLACEMENT OF THERMOSTAT WITH CONTRACT ADMINISTRATOR.
- ACOUSTICALLY LINE ENTIRE BACK WALL ABOVE CEILING TO REDUCE NOISE FROM FAN COIL RETURN OPENING. APPROXIMATELY 5.3 SQUARE METER OF AREA REQUIRING COVERAGE.
- ACOUSTICALLY LINE SUPPLY PLENUM BOX.
- PROVIDE 'NOISE BLOK' NB-200 6.35MM THICK, 2LB/SF. MASS LOADED VINYL ATTENUATING MATERIAL AS MANUFACTURED BY ACOUSTICGUARD TO COVER FAN COIL UNIT. COVER ALL SURFACES AS MUCH AS POSSIBLE. CUT MATERIAL WHERE ACCESS IS REQUIRED. REFER TO FAN COIL MANUFACTURER AND SOUND ATTENUATION MATERIAL MANUFACTURER FOR INSTALLATION REQUIREMENTS.

1 MAIN FLOOR - HVAC RENOVATION LAYOUT
SCALE: 1:50