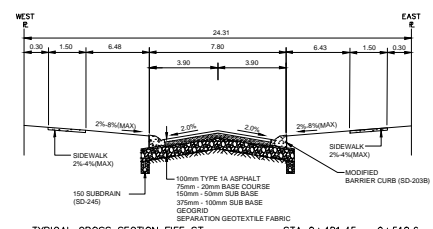
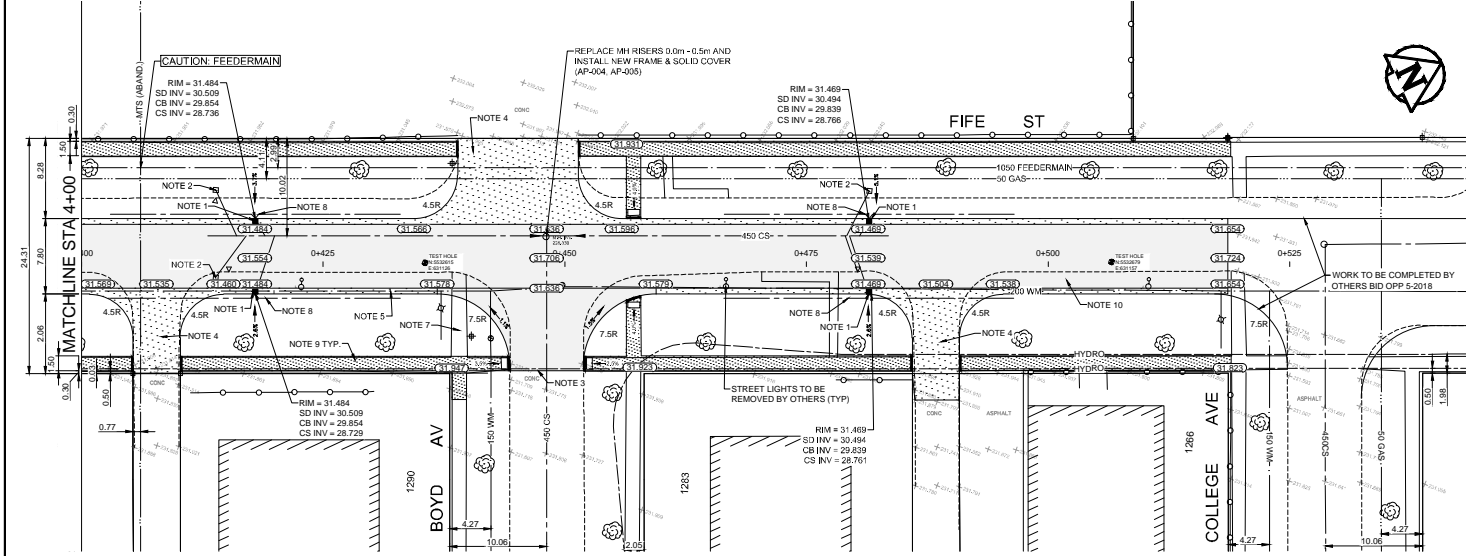


TYPICAL CROSS SECTION FIFE ST STA 0+109.61 - 0+481.45 N.T.S.



TYPICAL CROSS SECTION FIFE ST STA 0+481.45 - 0+518.6 N.T.S.



- CONSTRUCTION NOTES**
- INSTALL NEW 1800 CATCH-BASIN WITH CURB & GUTTER INLET (SD-024)
  - CONNECT TO SEWER AS PER CW 2130
  - ABANDON EXISTING CATCH BASIN AS PER CW 2130
  - RECONSTRUCT WITH 150mm REINFORCED CONCRETE PAVEMENT AND 50mm ASPHALT OVERLAY
  - RECONSTRUCT 150mm REINFORCED CONCRETE PAVEMENT
  - REMOVE EXISTING CURB AND CONSTRUCT NEW CONCRETE CURB AND GUTTER (SD-200) WITH MODIFIED BARRIER CURB (SD-200S)
  - REMOVE EXISTING PAVEMENT AND CONSTRUCT NEW 150mm REINFORCED CONCRETE PAVEMENT
  - REMOVE EXISTING CONCRETE SIDEWALK
  - INSTALL 15m SUBDRAINS (SD-245) CONNECT TO CATCH BASIN AND CAP ENDS AS PER CW 3120 OR AS DIRECTED BY CONTRACT ADMINISTRATOR
  - REMOVE EXISTING AND CONSTRUCT NEW 100mm CONCRETE SIDEWALK (SD-228A)
  - REMOVE EXISTING PAVEMENT AND CONSTRUCT NEW 100mm ASPHALT PAVEMENT TYP.
  - INSTALL 20m SUBDRAINS (SD-245) CONNECT TO CATCHBASIN AND CAP ENDS AS PER CW 3120
  - ABANDON EXISTING CATCH PIT AS PER CW 2130
- GENERAL NOTES**
- PAVEMENT DIMENSIONS ARE BACK OF CURB
  - ALL CURB RADI UNDER 15.0m SHALL BE MODIFIED
  - ADD 200.00mm TO ALL DESIGN ELEVATION TO OBTAIN GEODETIC ELEVATIONS
  - CURB REPLACEMENT AS DIRECTED BY CONTRACT ADMINISTRATOR

**PRELIMINARY**  
NOT TO BE USED FOR CONSTRUCTION

METRIC  
WHOLE NUMBERS INDICATE MILLIMETERS  
DECIMALIZED NUMBERS INDICATE METERS  
BID OPPORTUNITY NO. 1-2018

EXISTING	LEGEND - PLAN	PROPOSED	EXISTING	LEGEND - PLAN	PROPOSED	EXISTING	LEGEND - PROFILE	PROPOSED
○	HYDRANT	◆	---	LDG/MHS	---	▬	CONCRETE	▬
●	VALVE	●	---	WATERMAIN	---	▬	CONCRETE SIDEWALK	▬
○	CURB STOP	●	---	GAS	---	▬	ASPHALT	▬
□	MANHOLE	●	---	TRAFFIC SIGNALS	---	▬	UTILITY MAN HOLE	▬
○	CATCH BASIN	●	---	HYDRO/STREET LIGHT	---	▬	GLY WIRE ANCHOR	▬
△	CURB INLET	●	---	M/S	---	▬	WOOD FENCE	▬
○	HYDRO POLE	●	---	CURB RENEWAL	---	▬	CONCRETE FENCE	▬
○	LIGHT STANDARD	●	---	PROPERTY LINE	---	▬	LEGEND - PLAN	PROPOSED
○	TRAFFIC SIGNAL POLE	●	---	RAMP CURB	---	▬	WEST GUTTER	PROPOSED
+	SURVEY BAR	●	---	ELEVATIONS	---	▬	CENTER LINE	---
●	TEST HOLE	●	---	TREE	---	▬	EAST GUTTER	---

ENGINEERING DIVISION  
TECHNOLOGY SERVICES BRANCH  
106 - 1155 PACIFIC AVE

DESIGNED BY: C.W. CHECKED BY: C.H.  
DRAWN BY: C.W. APPROVED BY:

HOR. SCALE: 1:250  
VERTICAL: 1:10

1. SUBMIT FOR PLAN APPROVAL 10/2018 C.W.  
DATE BY DATE

2018/03/15

ENGINEER'S SEAL  
PROVINCE OF MANITOBA  
REGISTERED ENGINEER

THE CITY OF WINNIPEG  
PUBLIC WORKS DEPARTMENT

FIFE STREET  
FROM COLLEGE AVE TO BURROWS AVE  
ASPHALT RECONSTRUCTION AND ASSOCIATED WORKS  
FROM STA. 0+400 TO STA. 0+518.6

2018/03/15

4