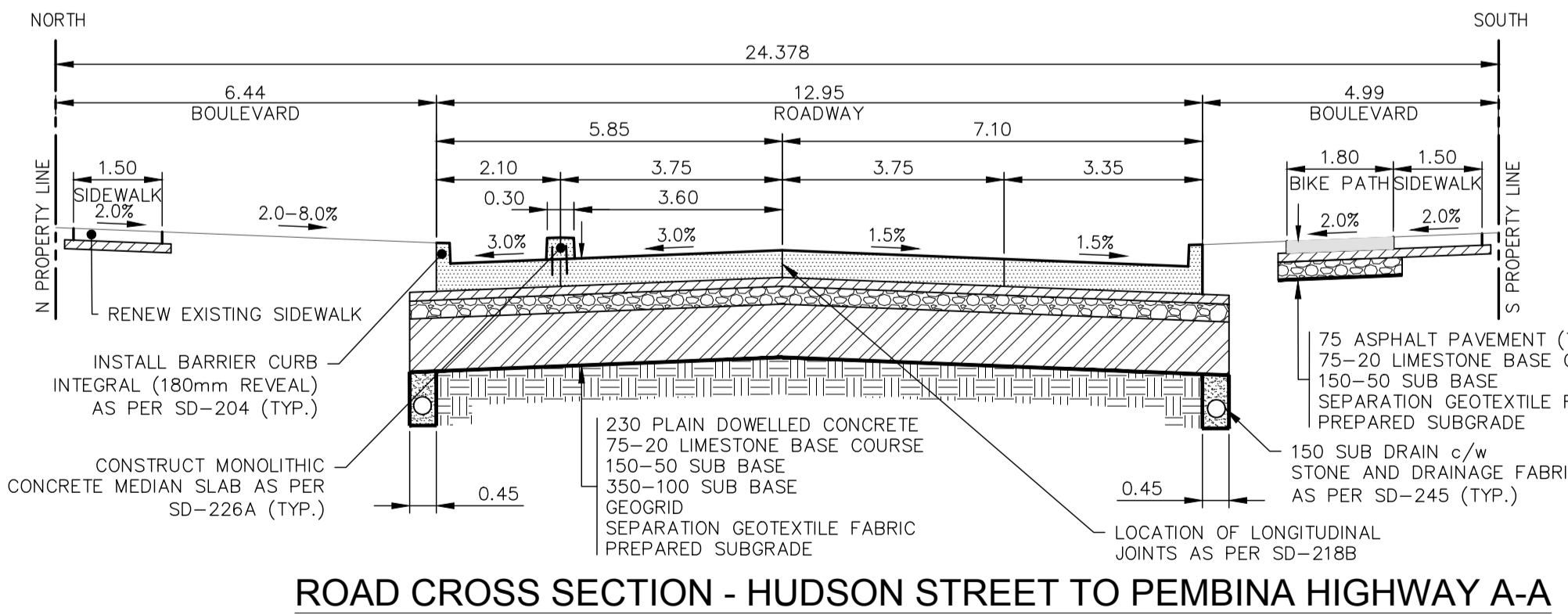


MATCHLINE STA. 21+80, SEE DWG C-14

MATCHLINE STA. 23+00, SEE DWG C-16



ROAD CROSS SECTION - HUDSON STREET TO PEMBINA HIGHWAY A-A

- NOTES:
- ALL WORK AND MATERIALS TO BE IN ACCORDANCE WITH THE LATEST REVISION OF THE CITY OF WINNIPEG STANDARD CONSTRUCTION SPECIFICATIONS.
  - CONTRACTOR TO CONFIRM THE LOCATION OF ALL UTILITIES/SERVICES IN THE FIELD PRIOR TO CONSTRUCTION.
  - ALL ROADWAY DIMENSIONS SHOWN ARE TO BACK OF CURB.
  - ADD 200.00 TO ABBREVIATED ELEVATIONS TO OBTAIN GEODETIC ELEVATION.
  - PAVEMENT REPAIRS SHOWN ARE ONLY A REPRESENTATIVE APPROXIMATION OF THE TENDERED QUANTITIES.
  - RENEW CURB AND SIDEWALK AS IDENTIFIED BY CONTRACT ADMINISTRATOR.
  - ALL PRIVATE WALKWAYS TO BE ADJUSTED TO NEW SIDEWALK OR TOP OF CURB ELEVATION, AS REQUIRED.
  - MODIFIED BARRIER CURB TO BE CONSTRUCTED AT ALL INTERSECTION RADI AND APPROACH RADI.
  - INSTALL 40MM LIP CURB THROUGH ALL APPROACHES UNLESS OTHERWISE NOTED.
  - CONTRACTORS TO TAKE PRECAUTIONARY STEPS TO PROTECT EXISTING TREES WITHIN THE LIMITS OF CONSTRUCTION FROM DAMAGE FROM CONSTRUCTION ACTIVITIES AS OUTLINED IN THE SPECIFICATIONS.
  - LAMP STANDARDS, HYDRO POLES, AND ANCHORS THAT REQUIRE TEMPORARY SUPPORT, REMOVAL OR REPLACEMENT, TO BE DONE SO AT THE EXPENSE OF THE CONTRACTOR AS NECESSARY.
  - ALL BOULEVARDS TO BE SODDED UNLESS OTHERWISE NOTED. LIMITS TO BE IDENTIFIED IN THE FIELD BY THE CONTRACT ADMINISTRATOR.
  - TRAFFIC SERVICES TO PAINT TRAFFIC LINES AND BICYCLE LANE MARKINGS (IF REQ'D).
  - CONTRACTOR TO CONFIRM LOCATION AND LIMITS OF SEWER REPAIRS BY PERFORMING VIDEO INSPECTION AND REVIEWING WITH CONTRACT ADMINISTRATOR PRIOR TO CONSTRUCTION (IF REQ'D).
  - ADJUST ALL WATER VALVES, HYDRANTS, MANHOLES, AND CATCH BASINS IN WORK AREA TO GRADE.

NOTE: These design documents are prepared solely for the use by the party with whom the design professional has entered into a contract and there are no representations of any kind made by the design professional to any party with whom the design professional has not entered into a contract.

---	WATER MAIN	---	HYDRO POLE & LIGHT STANDARD	---
---	LAND DRAINAGE SEWER	---	LIGHT STANDARD OR TRAFFIC SIGNAL	---
---	WASTE WATER SEWER	---	CURB RAMP	---
---	HYDRO	---	DETECTABLE WARNING SURFACE TILE	---
---	M.T.S.	---	EDGE OF SIDEWALK	---
---	GAS	---	PROPERTY LINE	---
---	SIGNALS	---	EDGE OF ASPHALT	---
○	MANHOLE	●	EDGE OF CONCRETE	---
□	CATCH BASIN	■	MODIFIED BARRIER CURB	---
△	CURB INLET	▽	BARRIER CURB	---
◇	UTILITIES ADJUSTED	△ □ ○	BARRIER CURB AND GUTTER	---
⊕	HYDRANT	◆	CONC SIDEWALK	---
⊗	VALVE	⊙	CONCRETE SLAB	---
230.99	GROUND GRADE	---	PAVEMENT WIDENING	---
(32.000)	PAVEMENT GRADE	(32.000)	ASPHALT	---
→	ANCHOR	---	MILLED SURFACE	---
#111	CIVIC ADDRESS	---	ASPHALT JOINT REPAIR	---
⊕	HYDRO POLE	---	PAVING STONES	---
---	FENCE	---	BULLNOSE	---
---	EXISTING	---	LEGEND-PLAN	---
---	PROPOSED	---	LEGEND-PLAN	---
---	EXISTING	---	LEGEND-PROFILE	---
---	PROPOSED	---	LEGEND-PROFILE	---

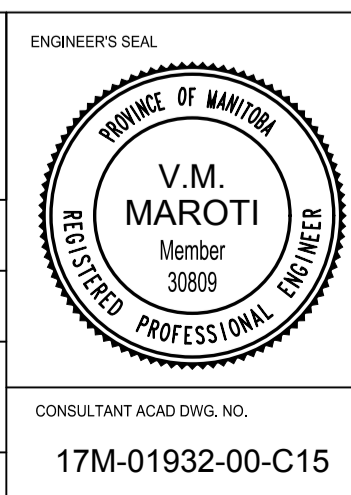
NO.	REVISIONS	DATE	BY
H			
G			
F			
E			
C	ISSUED FOR ADDENDUM 1	2018-03-16	DS
D	ISSUED FOR TENDER	2018-03-01	JP
B	ISSUED FOR UNDERGROUND STRUCTURES REVIEW	2018-02-02	JP
A	ISSUED FOR CLIENT REVIEW	2018-02-01	JP

NO.	REVISIONS	DATE	BY
H			
G			
F			
E			
C	ISSUED FOR ADDENDUM 1	2018-03-16	DS
D	ISSUED FOR TENDER	2018-03-01	JP
B	ISSUED FOR UNDERGROUND STRUCTURES REVIEW	2018-02-02	JP
A	ISSUED FOR CLIENT REVIEW	2018-02-01	JP

WSP Canada Limited  
Suite 111 - 93 Lombard Ave  
Winnipeg, MB R3B 3B1  
t. 204.943.3178  
f. 204.943.4948  
www.wsp.com

DESIGNED BY: JP  
CHECKED BY: TP  
DRAWN BY: SB  
APPROVED BY: VM

DATE: 2017-11-06



THE CITY OF WINNIPEG  
PUBLIC WORKS DEPARTMENT  
ENGINEERING SERVICES DIVISION

2018 INDUSTRIAL STREETS RENEWAL PROGRAM  
CHEVRIER BLVD - WAVERLEY ST TO PEMBINA HWY  
PAVEMENT RECONSTRUCTION  
STA. 21+80 TO STA. 23+00

CITY DRAWING NUMBER: ---  
SHEET 15 OF 23  
BID NO. 10-2018

CONSULTANT ACAD DWG. NO. 17M-01932-00-C15

METRIC  
WHOLE NUMBERS INDICATE MILLIMETRES  
DECIMALIZED NUMBERS INDICATE METRES

ENGINEERS  
GEOSCIENTIST  
MANITOBA  
Certificate of Authorization  
WSP Canada Group Limited  
No. 6657