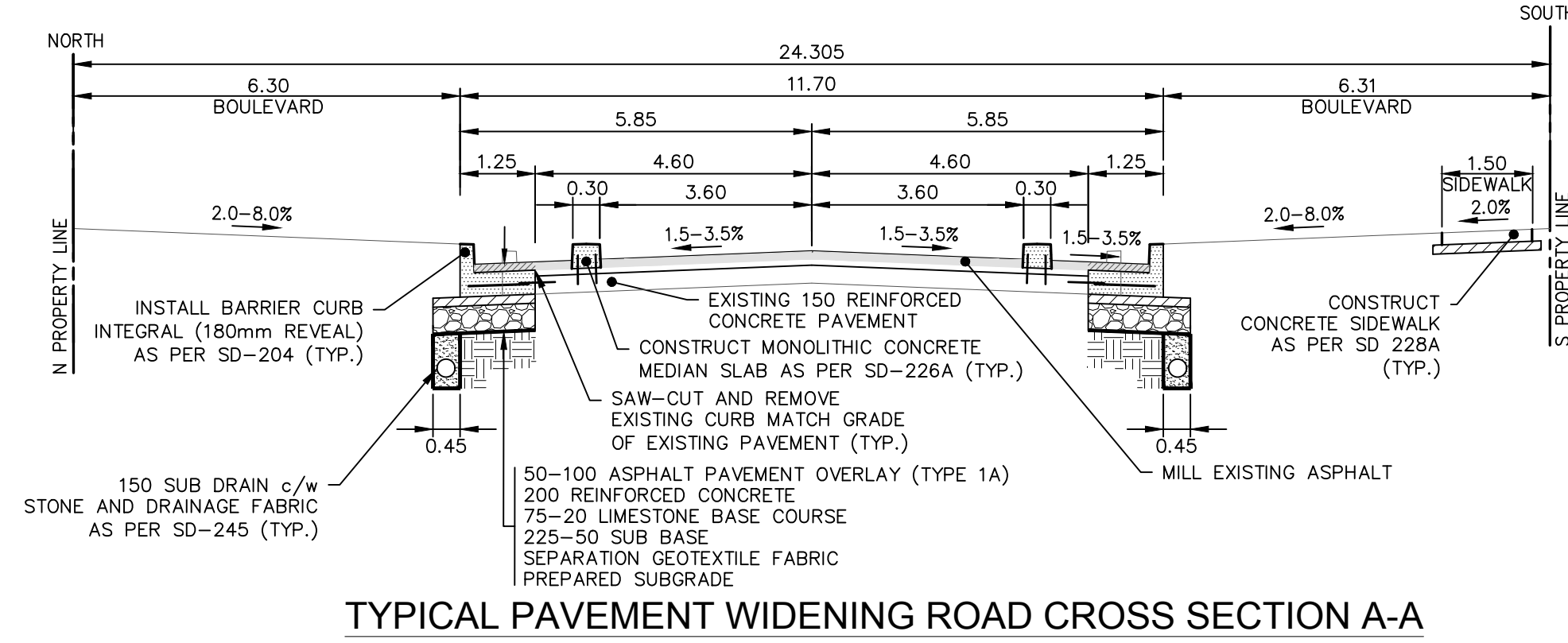


MATCHLINE STA. 3+95,
SEE DWG C-02

MATCHLINE STA. 5+30,
SEE DWG C-04



TYPICAL PAVEMENT WIDENING ROAD CROSS SECTION A-A

- NOTES:
1. ALL WORK AND MATERIALS TO BE IN ACCORDANCE WITH THE LATEST REVISION OF THE CITY OF WINNIPEG STANDARD CONSTRUCTION SPECIFICATIONS.
 2. CONTRACTOR TO CONFIRM THE LOCATION OF ALL UTILITIES/SERVICES IN THE FIELD PRIOR TO CONSTRUCTION.
 3. ALL ROADWAY DIMENSIONS SHOWN ARE TO BACK OF CURB.
 4. ADD 200.00 TO ABBREVIATED ELEVATIONS TO OBTAIN GEODETIC ELEVATION.
 5. PAVEMENT REPAIRS SHOWN ARE ONLY A REPRESENTATIVE APPROXIMATION OF THE TENDERED QUANTITIES.
 6. RENEW CURB AND SIDEWALK AS IDENTIFIED BY CONTRACT ADMINISTRATOR.
 7. ALL PRIVATE WALKWAYS TO BE ADJUSTED TO NEW SIDEWALK OR TOP OF CURB ELEVATION, AS REQUIRED.
 8. MODIFIED BARRIER CURB TO BE CONSTRUCTED AT ALL INTERSECTION RADI AND APPROACH RADI.
 9. INSTALL 40MM LIP CURB THROUGH ALL APPROACHES UNLESS OTHERWISE NOTED.
 10. CONTRACTORS TO TAKE PRECAUTIONARY STEPS TO PROTECT EXISTING TREES WITHIN THE LIMITS OF CONSTRUCTION FROM DAMAGE FROM CONSTRUCTION ACTIVITIES AS OUTLINED IN THE SPECIFICATIONS.
 11. LAMP STANDARDS, HYDRO POLES, AND ANCHORS THAT REQUIRE TEMPORARY SUPPORT, REMOVAL OR REPLACEMENT, TO BE DONE SO AT THE EXPENSE OF THE CONTRACTOR AS NECESSARY.
 12. ALL BOULEVARDS TO BE SODDED UNLESS OTHERWISE NOTED. LIMITS TO BE IDENTIFIED IN THE FIELD BY THE CONTRACT ADMINISTRATOR.
 13. TRAFFIC SERVICES TO PAINT TRAFFIC LINES AND BICYCLE LANE MARKINGS (IF REQ'D).
 14. CONTRACTOR TO CONFIRM LOCATION AND LIMITS OF SEWER REPAIRS BY PERFORMING VIDEO INSPECTION AND REVIEWING WITH CONTRACT ADMINISTRATOR PRIOR TO CONSTRUCTION (IF REQ'D).
 15. ADJUST ALL WATER VALVES, HYDRANTS, MANHOLES, AND CATCH BASINS IN WORK AREA TO GRADE.

NOTE:
These design documents are prepared solely for the use by the party with whom the design professional has entered into a contract and there are no representations of any kind made by the design professional to any party with whom the design professional has not entered into a contract.

---	WATER MAIN	---	HYDRO POLE & LIGHT STANDARD	---
---	LAND DRAINAGE SEWER	---	LIGHT STANDARD OR TRAFFIC SIGNAL	---
---	WASTE WATER SEWER	---	CURB RAMP	---
---	HYDRO	---	DETECTABLE WARNING SURFACE TILE	---
---	M.T.S.	---	EDGE OF SIDEWALK	---
---	GAS	---	PROPERTY LINE	---
---	SIGNALS	---	EDGE OF ASPHALT	---
○	MANHOLE	●	EDGE OF CONCRETE	---
□	CATCH BASIN	■	MODIFIED BARRIER CURB	---
△	CURB INLET	▽	BARRIER CURB	---
◇	UTILITIES ADJUSTED	△ □ ○	BARRIER CURB AND GUTTER	---
◇	HYDRANT	◆	CONC SIDEWALK	---
⊗	VALVE	⊗	CONCRETE SLAB	---
230.99	GROUND GRADE	---	PAVEMENT WIDENING	---
(32.000)	PAVEMENT GRADE	(32.000)	ASPHALT	---
→	ANCHOR	---	MILLED SURFACE	---
#111	CIVIC ADDRESS	---	ASPHALT JOINT REPAIR	---
●	HYDRO POLE	---	PAVING STONES	---
---	FENCE	---	BULLNOSE	---
---	EXISTING LEGEND-PLAN	---	PROPOSED LEGEND-PLAN	---
---	EXISTING LEGEND-PROFILE	---	PROPOSED LEGEND-PROFILE	---

---	PARKING LANE	---
---	NORTH BIKE LANE	---
---	SOUTH BIKE LANE	---
---	NORTH PROPERTY LINE	---
---	SOUTH PROPERTY LINE	---
---	NORTH SIDEWALK	---
---	SOUTH SIDEWALK	---
---	ROADWAY CENTRELINE	---
---	NORTH GUTTER	---
---	SOUTH GUTTER	---

LOCATIONS APPROVED UNDERGROUND STRUCTURES

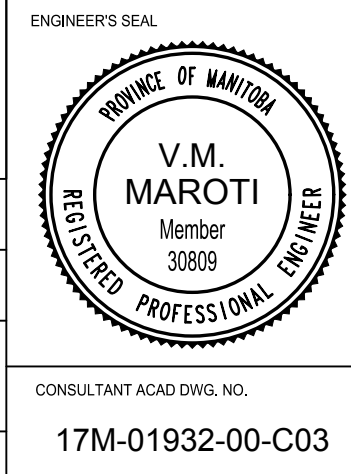
SIGNED BY: _____ DATE: _____

SUPV UG STRUCTURES

LOCATION OF UNDERGROUND STRUCTURES AS SHOWN ARE BASED ON THE BEST INFORMATION AVAILABLE BUT NO GUARANTEE IS GIVEN THAT ALL EXISTING UTILITIES ARE SHOWN OR THAT THE GIVEN LOCATIONS ARE EXACT CONFIRMATION OF EXISTANCE AND EXACT LOCATION OF ALL SERVICES MUST BE OBTAINED FROM THE INDIVIDUAL UTILITIES BEFORE PROCEEDING

G.M.M.	TOP OF TOP NUT ON FIRST HYDRANT EAST OF WAVERLEY STREET ON THE SOUTH SIDE OF CHEVRIER BOULEVARD	ELEV.	233.627
H			
F			
G			
E			
D			
C	ISSUED FOR TENDER	2018-03-01	JP
B	ISSUED FOR UNDERGROUND STRUCTURES REVIEW	2018-02-02	JP
A	ISSUED FOR CLIENT REVIEW	2018-02-01	JP
NO.	REVISIONS	DATE	BY

DESIGNED BY	JP	CHECKED BY	TP
DRAWN BY	SB	APPROVED BY	VM
HOR. SCALE	1:250	RELEASED FOR CONSTRUCTION	
VERTICAL	1:10	DATE	2017-11-06



WSP Canada Limited
Suite 111 - 93 Lombard Ave
Winnipeg, MB R3B 3B1
t. 204.943.3178
f. 204.943.4948
www.wsp.com

ENGINEERS SEAL
V.M. MAROTI
Member 3808
REGISTERED PROFESSIONAL ENGINEER

CONSULTANT ACAD DWG. NO.
17M-01932-00-C03

THE CITY OF WINNIPEG
PUBLIC WORKS DEPARTMENT
ENGINEERING SERVICES DIVISION

2018 INDUSTRIAL STREETS RENEWAL PROGRAM
CHEVRIER BLVD - WAVERLEY ST TO PEMBINA HWY
PAVEMENT REHABILITATION
STA. 3+95 TO STA. 5+30

CITY DRAWING NUMBER ---
SHEET 3 OF 23
BID NO. 10-2018

METRIC
WHOLE NUMBERS INDICATE MILLIMETRES
DECIMALIZED NUMBERS INDICATE METRES

ENGINEERS
GEOSCIENTIST
MANITOBA
Certificate of Authorization
WSP Canada Group Limited
No. 6657