

TYPICAL MULTI-USE PATH CROSS SECTION A-A

- NOTES:
1. ALL WORK AND MATERIALS TO BE IN ACCORDANCE WITH THE LATEST REVISION OF THE CITY OF WINNIPEG STANDARD CONSTRUCTION SPECIFICATIONS.
 2. CONTRACTOR TO CONFIRM THE LOCATION OF ALL UTILITIES/SERVICES IN THE FIELD PRIOR TO CONSTRUCTION.
 3. ALL ROADWAY DIMENSIONS SHOWN ARE TO BACK OF CURB.
 4. ADD 200.00 TO ABBREVIATED ELEVATIONS TO OBTAIN GEODETIC ELEVATION.
 5. PAVEMENT REPAIRS SHOWN ARE ONLY A REPRESENTATIVE APPROXIMATION OF THE TENDERED QUANTITIES.
 6. RENEW CURB AND SIDEWALK AS IDENTIFIED BY CONTRACT ADMINISTRATOR.
 7. ALL PRIVATE WALKWAYS TO BE ADJUSTED TO NEW SIDEWALK OR TOP OF CURB ELEVATION, AS REQUIRED.
 8. MODIFIED BARRIER CURB TO BE CONSTRUCTED AT ALL INTERSECTION RADI AND APPROACH RADI.
 9. INSTALL 40MM LIP CURB THROUGH ALL APPROACHES UNLESS OTHERWISE NOTED.
 10. CONTRACTORS TO TAKE PRECAUTIONARY STEPS TO PROTECT EXISTING TREES WITHIN THE LIMITS OF CONSTRUCTION FROM DAMAGE FROM CONSTRUCTION ACTIVITIES AS OUTLINED IN THE SPECIFICATIONS.
 11. LAMP STANDARDS, HYDRO POLES, AND ANCHORS THAT REQUIRE TEMPORARY SUPPORT, REMOVAL OR REPLACEMENT, TO BE DONE SO AT THE EXPENSE OF THE CONTRACTOR AS NECESSARY.
 12. ALL BOULEVARDS TO BE SODDED UNLESS OTHERWISE NOTED. LIMITS TO BE IDENTIFIED IN THE FIELD BY THE CONTRACT ADMINISTRATOR.
 13. TRAFFIC SERVICES TO PAINT TRAFFIC LINES AND BICYCLE LANE MARKINGS (IF REQ'D).
 14. CONTRACTOR TO CONFIRM LOCATION AND LIMITS OF SEWER REPAIRS BY PERFORMING VIDEO INSPECTION AND REVIEWING WITH CONTRACT ADMINISTRATOR PRIOR TO CONSTRUCTION (IF REQ'D).
 15. ADJUST ALL WATER VALVES, HYDRANTS, MANHOLES, AND CATCH BASINS IN WORK AREA TO GRADE.

NOTE: These design documents are prepared solely for the use by the party with whom the design professional has entered into a contract and there are no representations of any kind made by the design professional to any party with whom the design professional has not entered into a contract.

---	WATER MAIN	---	●	HYDRO POLE & LIGHT STANDARD	---
---	LAND DRAINAGE SEWER	---	●/●	LIGHT STANDARD OR TRAFFIC SIGNAL	---
---	WASTE WATER SEWER	---	■	CURB RAMP	---
---	HYDRO	---	□	DETECTABLE WARNING SURFACE TILE	---
---	M.T.S.	---	---	EDGE OF SIDEWALK	---
---	GAS	---	---	PROPERTY LINE	---
---	SIGNALS	---	---	EDGE OF ASPHALT	---
○	MANHOLE	---	---	EDGE OF CONCRETE	---
□	CATCH BASIN	---	---	MODIFIED BARRIER CURB	---
△	CURB INLET	---	---	BARRIER CURB	---
◇	UTILITIES ADJUSTED	△ □ ○	---	BARRIER CURB AND GUTTER	---
◇	HYDRANT	◆	---	CONC SIDEWALK	---
◇	VALVE	⊗	---	CONCRETE SLAB	---
230.99	GROUND GRADE	---	---	PAVEMENT WIDENING	---
(32.000)	PAVEMENT GRADE	(32.000)	---	ASPHALT	---
→	ANCHOR	---	---	MILLED SURFACE	---
#111	CIVIC ADDRESS	---	---	ASPHALT JOINT REPAIR	---
●	HYDRO POLE	---	---	PAVING STONES	---
---	FENCE	---	---	BULLNOSE	---
---	EXISTING LEGEND-PLAN	---	---	LEGEND-PLAN	---
---	PROPOSED	---	---	PROPOSED	---
---	EXISTING	---	---	EXISTING	---
---	LEGEND-PROFILE	---	---	LEGEND-PROFILE	---
---	PROPOSED	---	---	PROPOSED	---

---	MULTI-USE PATH CENTRELINE	---
---	EAST TOP OF CURB	---
---	WEST TOP OF CURB	---
---	BOULEVARD	---

LOCATIONS APPROVED UNDERGROUND STRUCTURES

SIGNED BY: _____ DATE: _____

LOCATIONS APPROVED UNDERGROUND STRUCTURES AS SHOWN ARE BASED ON THE BEST INFORMATION AVAILABLE BUT NO GUARANTEE IS GIVEN THAT ALL EXISTING UTILITIES ARE SHOWN OR THAT THE GIVEN LOCATIONS ARE EXACT CONFIRMATION OF EXISTENCE AND EXACT LOCATION OF ALL SERVICES MUST BE OBTAINED FROM THE INDIVIDUAL UTILITIES BEFORE PROCEEDING

G.M. - 233.827	WSP Canada Limited	
ELEV. - TOP OF TOP NUT ON FIRST HYDRANT EAST OF WAVERLEY STREET ON THE SOUTH SIDE OF CHEVRIER BOULEVARD	Suite 111 - 93 Lombard Ave	
	Winnipeg, MB R3B 3B1	
	t. 204.943.3178	
	f. 204.943.4948	
	www.wsp.com	
H	DESIGNED BY	JP
G	CHECKED BY	TP
F	DRAWN BY	SB
E	APPROVED BY	VM
D	ISSUED FOR TENDER	2018-03-01 JP
C	ISSUED FOR UNDERGROUND STRUCTURES REVIEW	2018-02-02 JP
A	ISSUED FOR CLIENT REVIEW	2018-02-01 JP
NO.	REVISIONS	DATE BY
		2017-11-06

wsp

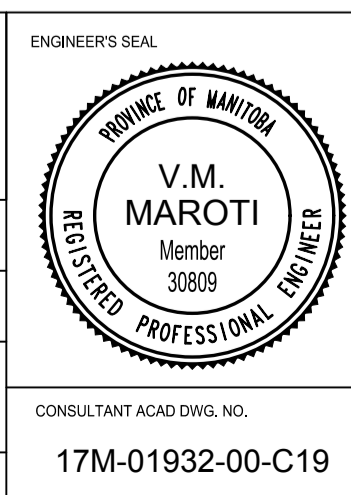
WSP Canada Limited
Suite 111 - 93 Lombard Ave
Winnipeg, MB R3B 3B1
t. 204.943.3178
f. 204.943.4948
www.wsp.com

DESIGNED BY: JP
CHECKED BY: TP
DRAWN BY: SB
APPROVED BY: VM

HOR. SCALE: 1:250
VERTICAL: 1:10

RELEASED FOR CONSTRUCTION

DATE: 2017-11-06



THE CITY OF WINNIPEG
PUBLIC WORKS DEPARTMENT
ENGINEERING SERVICES DIVISION

2018 INDUSTRIAL STREETS RENEWAL PROGRAM

WAVERLEY ST - CHEVRIER BLVD TO MCGILLIVRAY BLVD

CONCRETE RECONSTRUCTION
STA. 3+75 TO STA. 5+20

CITY DRAWING NUMBER: ---
SHEET 19 OF 23
BID NO. 10-2018

17M-01932-00-C19

METRIC

WHOLE NUMBERS INDICATE MILLIMETRES
DECIMALIZED NUMBERS INDICATE METRES

ENGINEERS GEOSCIENTIST MANITOBA
Certificate of Authorization
WSP Canada Group Limited
No. 6657