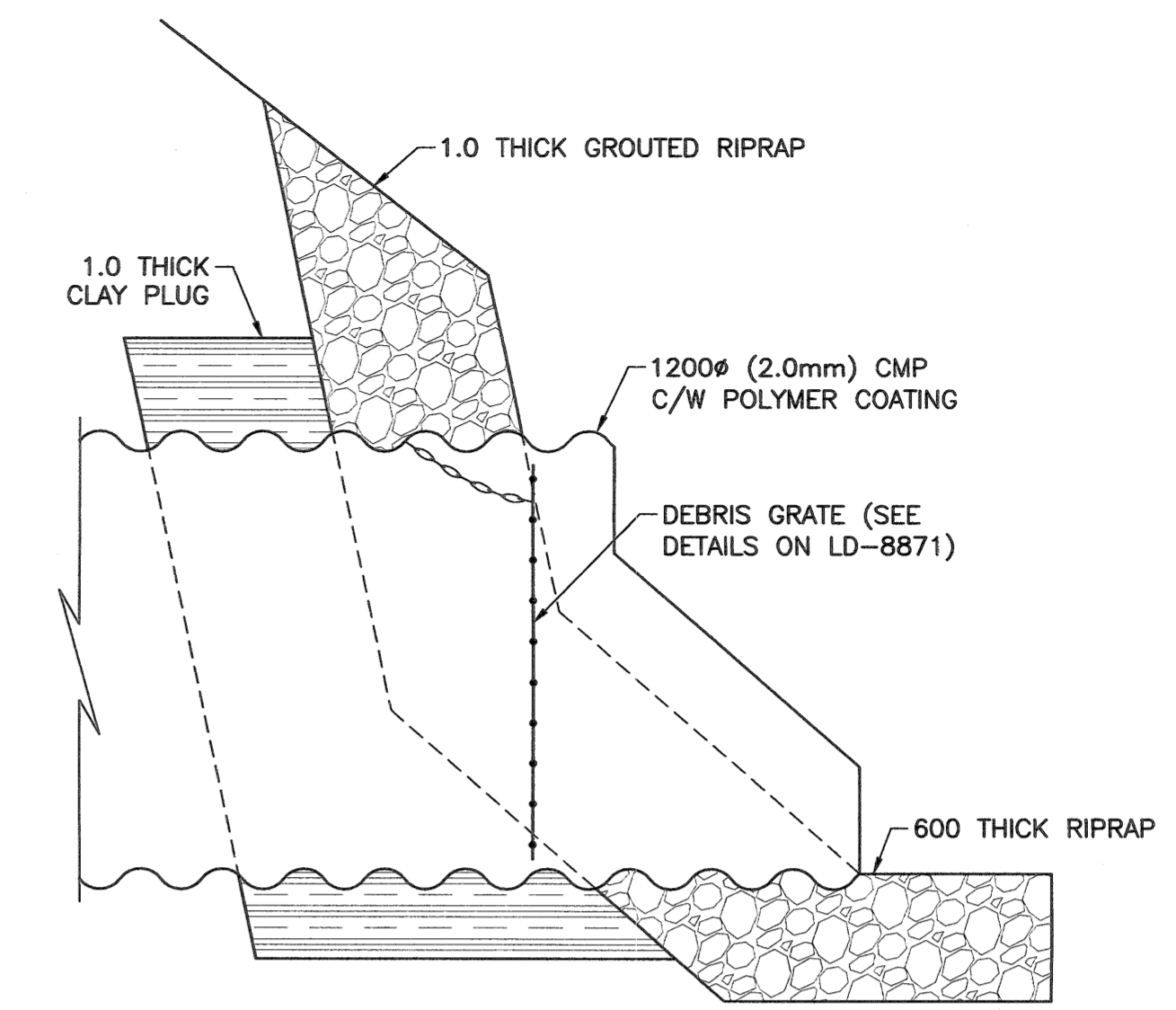
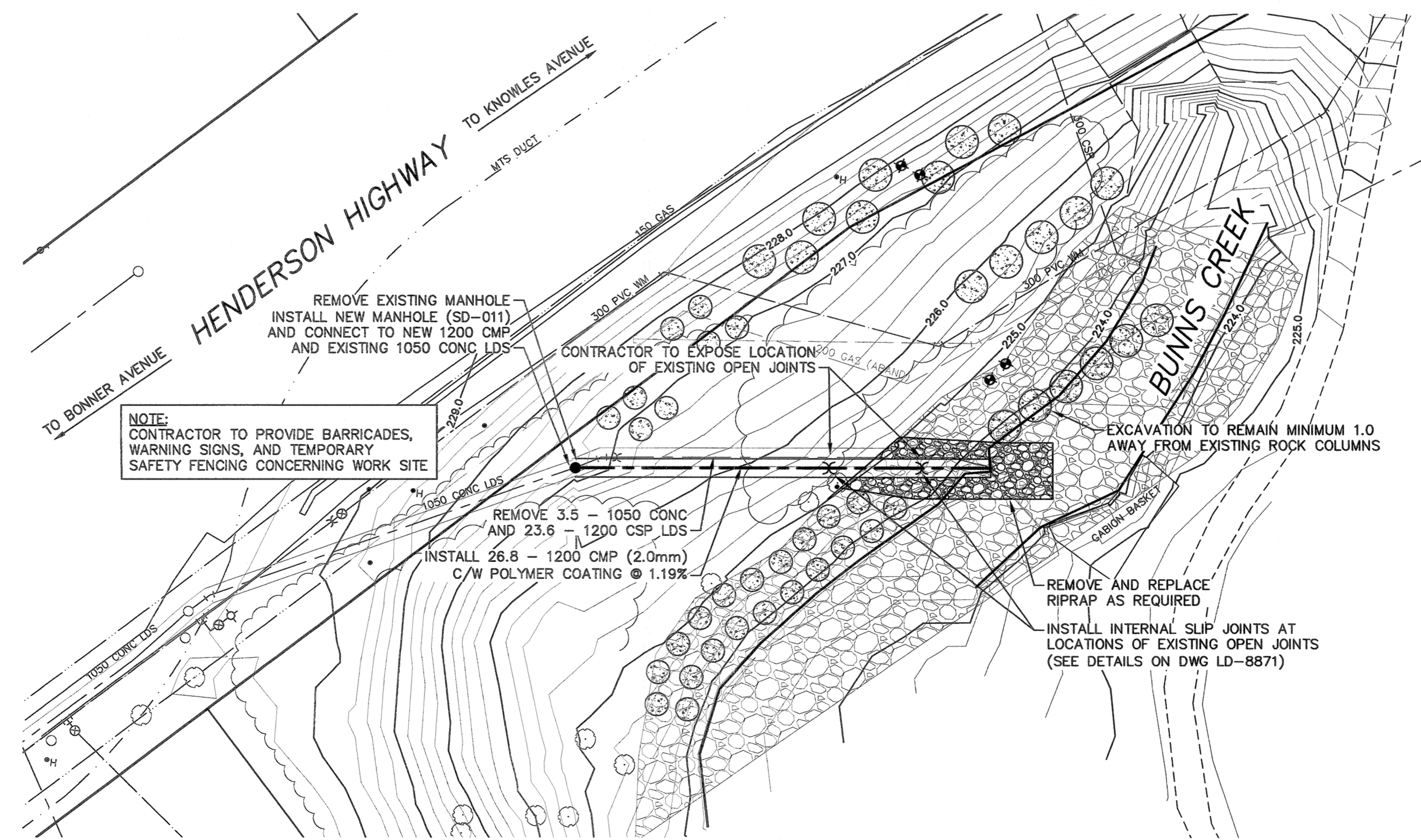


NOTE: CHAINAGES SHOWN ARE ALONG  $\phi$  OF 1200 CSP LDS



END SECTION DETAIL  
(END CONDITION 2)  
SCALE: N.T.S.



NOTE:  
CONTRACTOR TO PROVIDE BARRICADES,  
WARNING SIGNS, AND TEMPORARY  
SAFETY FENCING CONCERNING WORK SITE

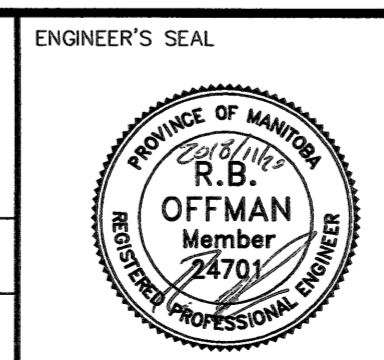
NOTES:

1. ALL EXCAVATED MATERIAL WITHIN 107.0 OF THE REGULATED SUMMER RIVER LEVEL (RSRL) MUST BE REMOVED FROM SITE (NO STOCK PILING).
2. REMOVE AND REPLACE TREES AS DIRECTED BY CONTRACT ADMINISTRATOR.
3. CONTRACTOR TO RESTORE SIDEWALK, ROAD, CURB, RETAINING WALL AND ALL OTHER LANDSCAPING FEATURES TO PRE-CONSTRUCTION CONDITION.
4. CMP TO MANHOLE CONNECTION TO BE 150 REINFORCED CONCRETE COLLAR IN CONJUNCTION WITH WATER-STOP GROUT RING.

PROPERTY LIMITS DELINEATION

DELINEATION OF PROPERTY LIMITS AS SHOWN ON THIS DWG DOES NOT REPRESENT A "LEGAL SURVEY". KGS GROUP MAKES NO REPRESENTATION OR WARRANTY AS TO THE ACCURACY OF PROPERTY LIMITS DELINEATED ON THIS DWG, NOR ON THE DIMENSIONAL ACCURACY OF DWG FEATURES RELATIVE TO THOSE PROPERTY LIMITS.

**ENGINEERS GEOSCIENTISTS MANITOBA**  
Certificate of Authorization  
KGS Group  
No. 245



CONSULTANT DRAWING NUMBER  
18-0107-013\_LD-8860

**THE CITY OF WINNIPEG**  
WATER AND WASTE DEPARTMENT  
ENGINEERING DIVISION

2019 OUTFALL RENEWAL  
REHABILITATION PROGRAM  
**HENDERSON HIGHWAY OUTFALL  
PLAN AND PROFILE**  
S-MA40000289

SHEET **4** OF **16**  
CITY DRAWING NUMBER  
**LD-8860**

WARNING		LOCATION APPROVED UNDERGROUND STRUCTURES		B.M. ELEV.	
IF POWER EQUIPMENT OR EXPLOSIVES ARE TO BE USED FOR EXCAVATION ON THIS PROJECT THE CONTRACTOR MUST: 1) NOTIFY THE GAS COMPANY OF THE PROPOSED LOCATION OF EXCAVATION. 2) TAKE PRECAUTION TO AVOID DAMAGE TO GAS COMPANY INSTALLATIONS. SEE PROVINCIAL REGULATION 210/72 FOR DETAILS		SUPV. U/G STRUCTURES COMMITTEE DATE NOTE: LOCATION OF UNDERGROUND STRUCTURES AS SHOWN ARE BASED ON THE BEST INFORMATION AVAILABLE BUT NO GUARANTEE IS GIVEN THAT ALL EXISTING UTILITIES ARE SHOWN OR THAT THE GIVEN LOCATIONS ARE EXACT. CONFIRMATION OF EXISTENCE AND EXACT LOCATION OF ALL SERVICES MUST BE OBTAINED FROM THE INDIVIDUAL UTILITIES BEFORE PROCEEDING WITH CONSTRUCTION.		ISSUED FOR TENDER 2018 11 21 NO. REVISIONS DATE BY	

<b>KGS GROUP CONSULTING ENGINEERS</b>			
DESIGNED BY	NGV	CHECKED BY	R30
DRAWN BY	GEL	APPROVED BY	R30
SCALE:		RELEASED FOR CONSTRUCTION	
HORIZONTAL	1:250		
VERTICAL	1:50		
DATE	2018 11 20	DATE	

