

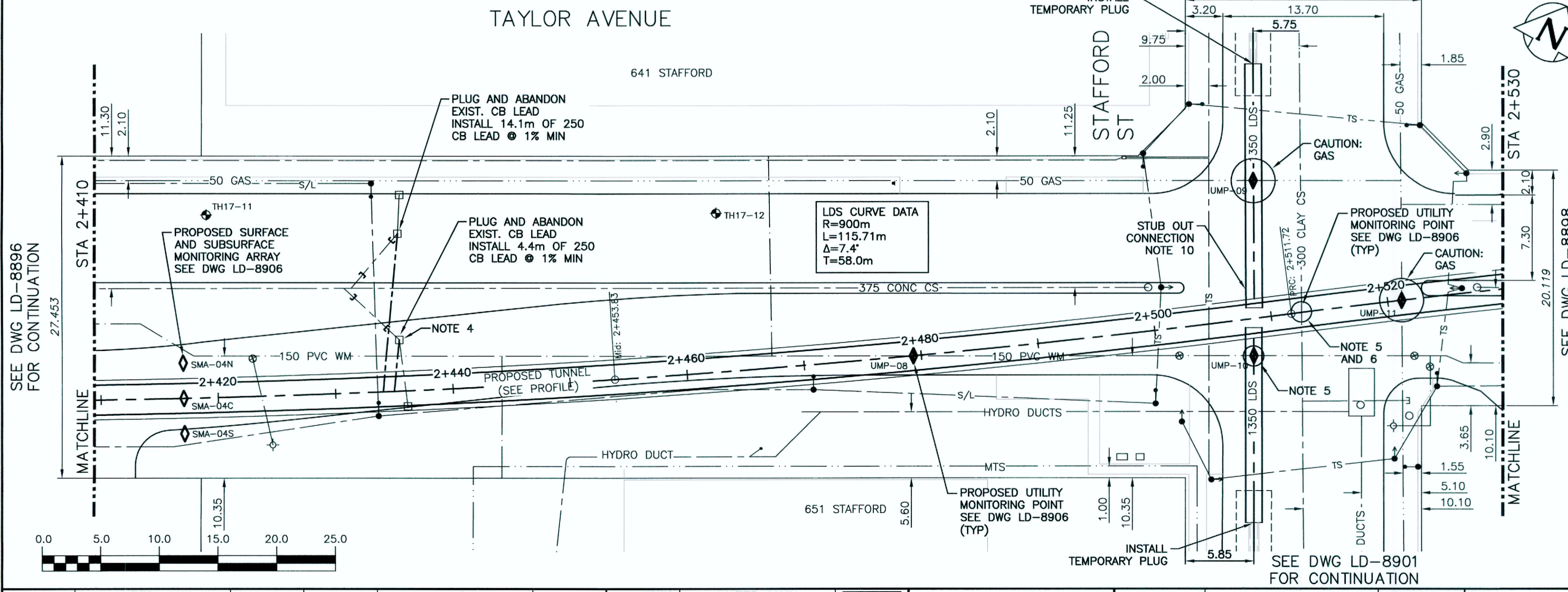
NOTE: CARRIER PIPE INVERT CONSISTENT FOR BOTH TWO-PASS (Ø2100) AND PIPE JACKING (Ø2400 MIN) TUNNELING METHODS.

NOTE: CHAINAGES SHOWN ARE ALONG C OF PROPOSED LDS

WARNING
IF POWER EQUIPMENT OR EXPLOSIVES ARE TO BE USED FOR EXCAVATION ON THIS PROJECT THE CONTRACTOR MUST:
1) NOTIFY THE GAS COMPANY OF THE PROPOSED LOCATION OF EXCAVATION.
2) TAKE PRECAUTION TO AVOID DAMAGE TO GAS COMPANY INSTALLATIONS.
SEE PROVINCIAL REGULATION 210/72 FOR DETAILS

PROPERTY LIMITS DELINEATION
DELINEATION OF PROPERTY LIMITS AS SHOWN ON THIS DRAWING DOES NOT REPRESENT A "LEGAL SURVEY". JACOBS AND KGS GROUP MAKE NO REPRESENTATION OR WARRANTY AS TO THE ACCURACY OF PROPERTY LIMITS DELINEATED ON THIS DRAWING, NOR ON THE DIMENSIONAL ACCURACY OF DRAWING FEATURES RELATIVE TO THOSE PROPERTY LIMITS.

- CONSTRUCTION NOTES:**
- SEWER AND WATER SERVICES SHOWN ON DRAWING ARE APPROXIMATE ONLY.
 - LOCATION OF ALL SEWER AND WATER LINES TO BE CONFIRMED IN FIELD BY CONTRACTOR.
 - INSTALL NEW SEWER BY TRENCHLESS METHODS, UNLESS OTHERWISE NOTED.
 - REPLACE GRATED COVER WITH SLOTTED LID AP-007. HYDRO EXCAVATE UTILITY PRIOR TO CONSTRUCTION.
 - PROVIDE PRE AND POST CCTV OF UTILITY CROSSING.
 - LOCATE AND HYDRO EXCAVATE SEWER SERVICE(S) ALONG TAYLOR AVENUE FROM BUILDING AT 651 STAFFORD STREET.
 - CASING PIPE SHOWN FOR CONVENTIONAL TWO-PASS TUNNELING OPTION ONLY. DISREGARD FOR PIPE JACKING.
 - FOR TWO-PASS MAINTAIN A MINIMUM 250mm CLEARANCE BETWEEN TUNNEL AND CARRIER PIPE.
 - MID POINT OF STUB OUT TO MATCH MID POINT OF LDS TRUNK.
 - FOR STUB OUT CONNECTION SEE LD-8902 FOR TWO-PASS OR LD-8904 FOR PIPE JACKING.



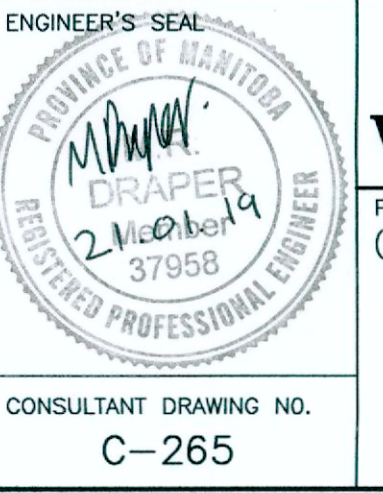
150 WM	WATER MAIN	150 WM		HYDRO		150 WM	WATER MAIN	150 WM
Hydrant	HYDRANT	Hydrant		M.T.S.		Hydrant	HYDRANT, VALVE	Hydrant
Valve	VALVE	Valve		CONCRETE		Valve	LAND DRAINAGE SEWER	Valve
300 LDS	LAND DRAINAGE SEWER	300 LDS		ASPHALT		300 LDS	WASTE WATER SEWER	300 LDS
250 WWS	WASTE WATER SEWER	250 WWS		SIDEWALK		250 WWS	CENTRELINE	250 WWS
Manhole	MANHOLE	Manhole		PLANNING		Manhole	NORTH/WEST GUTTER	Manhole
Catch Basin	CATCH BASIN	Catch Basin		PROPERTY LINE		Catch Basin	SOUTH/EAST GUTTER	Catch Basin
Curb Inlet	CURB INLET	Curb Inlet		SURVEY BAR		Curb Inlet	N/W, S/E R'S	Curb Inlet
Bend	BEND	Bend		GAS		Bend		Bend
Reducer	REDUCER	Reducer		CURB STOP		Reducer		Reducer
TEE	TEE	TEE		EXISTING		TEE		TEE
EXISTING	LEGEND-PLAN	PROPOSED	EXISTING	LEGEND-PLAN	PROPOSED	EXISTING	LEGEND-PROFILE	PROPOSED

150 WM	WATER MAIN	150 WM		HYDRO		150 WM	WATER MAIN	150 WM
Hydrant	HYDRANT	Hydrant		M.T.S.		Hydrant	HYDRANT, VALVE	Hydrant
Valve	VALVE	Valve		CONCRETE		Valve	LAND DRAINAGE SEWER	Valve
300 LDS	LAND DRAINAGE SEWER	300 LDS		ASPHALT		300 LDS	WASTE WATER SEWER	300 LDS
250 WWS	WASTE WATER SEWER	250 WWS		SIDEWALK		250 WWS	CENTRELINE	250 WWS
Manhole	MANHOLE	Manhole		PLANNING		Manhole	NORTH/WEST GUTTER	Manhole
Catch Basin	CATCH BASIN	Catch Basin		PROPERTY LINE		Catch Basin	SOUTH/EAST GUTTER	Catch Basin
Curb Inlet	CURB INLET	Curb Inlet		SURVEY BAR		Curb Inlet	N/W, S/E R'S	Curb Inlet
Bend	BEND	Bend		GAS		Bend		Bend
Reducer	REDUCER	Reducer		CURB STOP		Reducer		Reducer
TEE	TEE	TEE		EXISTING		TEE		TEE
EXISTING	LEGEND-PLAN	PROPOSED	EXISTING	LEGEND-PLAN	PROPOSED	EXISTING	LEGEND-PROFILE	PROPOSED

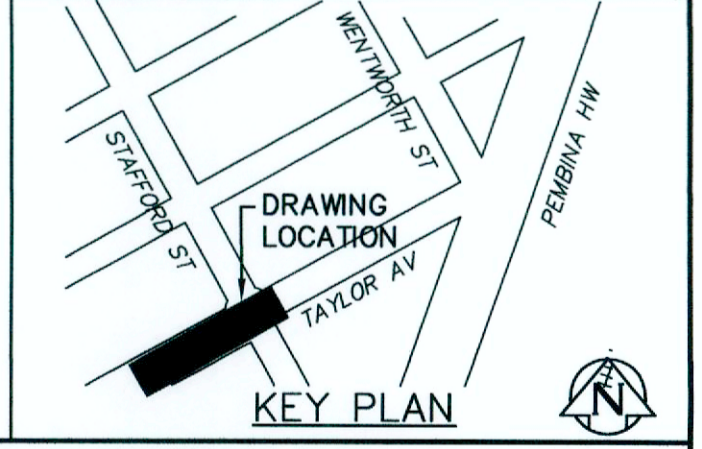
LOCATION APPROVED UNDERGROUND STRUCTURES
SUPV. U/G STRUCTURES COMMITTEE DATE
NOTE: LOCATION OF UNDERGROUND STRUCTURES AS SHOWN ARE BASED ON THE BEST INFORMATION AVAILABLE BUT NO GUARANTEE IS GIVEN THAT ALL EXISTING UTILITIES ARE SHOWN OR THAT THE GIVEN LOCATIONS ARE EXACT. CONFIRMATION OF EXISTENCE AND EXACT LOCATION OF ALL SERVICES MUST BE OBTAINED FROM THE INDIVIDUAL UTILITIES BEFORE PROCEEDING WITH CONSTRUCTION.

B.M. ELEV.					
0	ISSUED FOR TENDER	01/2019	JBC		
NO.	REVISIONS	DATE	BY	DATE	

KGS GROUP CONSULTING ENGINEERS
DESIGNED BY SDG
DRAWN BY JBC
CHECKED BY MD
APPROVED BY RBO (KGS Group)
HOR. SCALE: 1:250
VERTICAL: 1:50
RELEASED FOR CONSTRUCTION: 01/29/19



THE CITY OF WINNIPEG WATER AND WASTE DEPARTMENT
PROJECT TITLE: COCKBURN AND CALROSSIE COMBINED SEWER RELIEF WORKS - CONTRACT 5
TAYLOR AVENUE FROM STA 2+410 TO STA 2+530
SHEET 8 OF 19
COMPUTER FILE NAME: C-265.dwg
CITY DRAWING NUMBER: LD-8897



File Name: C:\pwworkdir\ch2mhill\wbs\coritez\10443046\