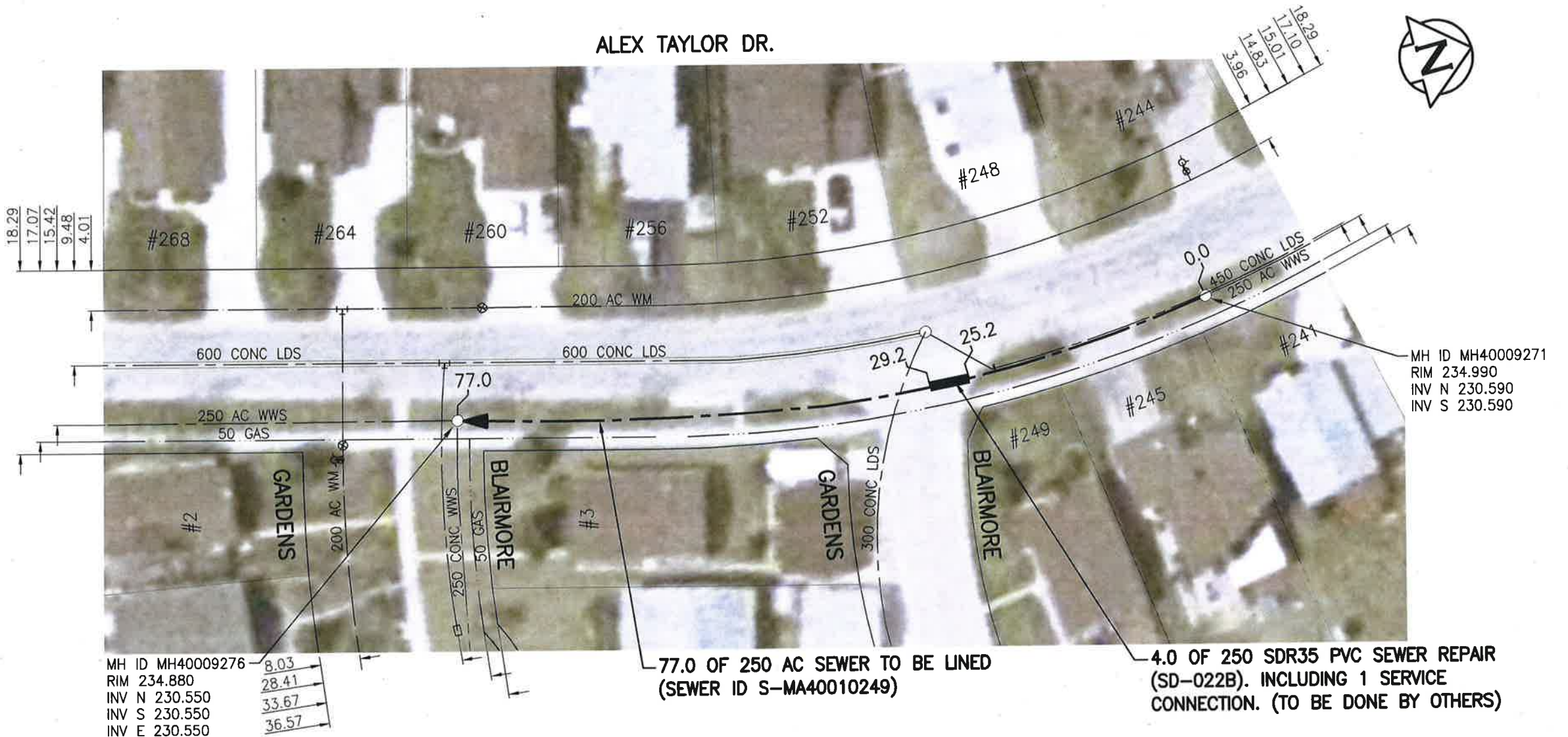


SEWER JUNCTION INFORMATION FROM SEWER VIDEO INSPECTION

SEWER ID S-MA40010249		
DISTANCE FROM MH40009271		
DISTANCE	DIAMETER	CLOCK
1.0	150	10
8.6	150	2
10.3	150	2
11.2	150	10
22.1	150	10
28.0	150	2
30.2	150	2
42.9	150	1
49.3	150	3
51.5	150	3
69.4	150	3
71.7	150	2



### WARNING

IF POWER EQUIPMENT OR EXPLOSIVES ARE TO BE USED FOR EXCAVATION ON THIS PROJECT THE CONTRACTOR MUST:

- 1) NOTIFY THE GAS COMPANY OF THE PROPOSED LOCATION OF EXCAVATION.
- 2) TAKE PRECAUTION TO AVOID DAMAGE TO GAS COMPANY INSTALLATIONS.

SEE PROVINCIAL REGULATION 140/92 FOR DETAILS

**ENGINEERS  
GEOSCIENTISTS  
MANITOBA**

Certificate of Authorization  
Stantec Consulting Ltd.  
No. 1301

**METRIC**

WHOLE NUMBERS INDICATE MILLIMETRES  
DECIMALIZED NUMBERS INDICATE METRES

1:500

BID OPPORTUNITY NO. 1167-2018

### LOCATION APPROVED UNDERGROUND STRUCTURES

SUPV. U/G STRUCTURES COMMITTEE	DATE

NOTE:  
LOCATION OF UNDERGROUND STRUCTURES AS SHOWN ARE BASED ON THE BEST INFORMATION AVAILABLE BUT NO GUARANTEE IS GIVEN THAT ALL EXISTING UTILITIES ARE SHOWN OR THAT THE GIVEN LOCATIONS ARE EXACT. CONFIRMATION OF EXISTENCE AND EXACT LOCATION OF ALL SERVICES MUST BE OBTAINED FROM THE INDIVIDUAL UTILITIES BEFORE PROCEEDING WITH CONSTRUCTION.

NO.	ISSUED FOR TENDER	DATE	BY
1	ISSUED FOR TENDER	19.01.02	RS
NO.	REVISIONS	DATE	BY

**Stantec**  
905 Waverley Street, Winnipeg, Manitoba  
Tel 204-489-5900 Fax 204-453-9012

DESIGNED BY	RS	CHECKED BY	RS
DRAWN BY	SC	APPROVED BY	RS
HOR. SCALE:	1:500	RELEASED FOR CONSTRUCTION	
VERTICAL:		DATE	21/02/19

ENGINEER'S SEAL

PROVINCE OF MANITOBA  
JAN 21/19  
R.M. SHERLOCK  
MEMBER 24045  
REGISTERED PROFESSIONAL ENGINEER

CONSULTANT DRAWING NO.  
**C-102**

**THE CITY OF WINNIPEG**  
WATER AND WASTE DEPARTMENT

2018 SEWER RENEWALS BY CIPP LINING  
CONTRACT 7  
**ALEX TAYLOR DRIVE**  
4TH MH S OF FOXBOROUGH RD TO  
MH AT BLAIRMORE GARDENS

SHEET	OF
<b>03</b>	<b>48</b>
CAD FILE DRAWING NUMBER <b>18120c-101-922.dwg</b>	
CITY DRAWING NUMBER <b>11838</b>	

V:\1112\active\111218120\0300\_drawing\0302\_sheet\_files\02\_civil\18120c-101-922.dwg