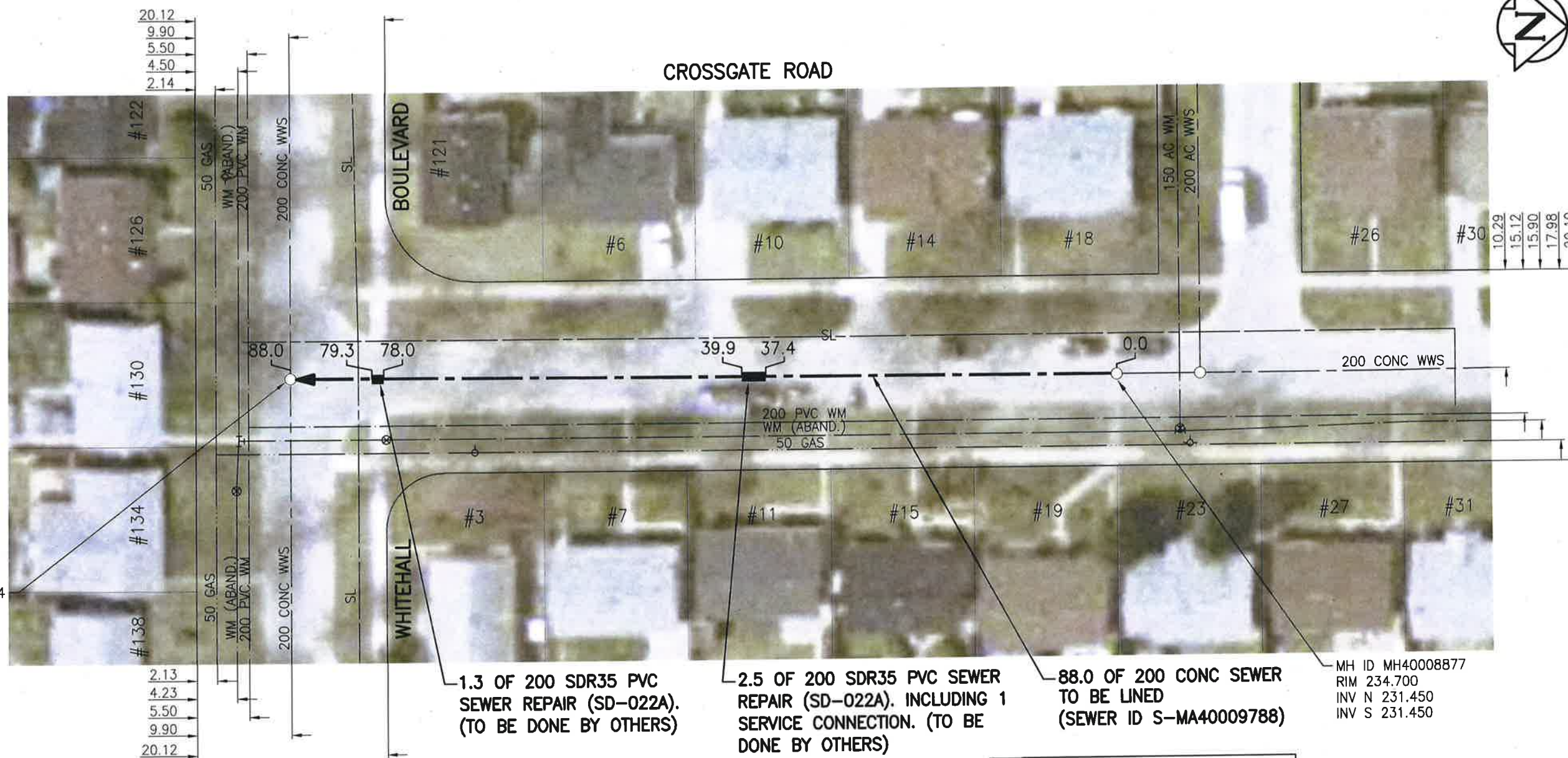


SEWER JUNCTION INFORMATION FROM SEWER VIDEO INSPECTION

SEWER ID S-MA40009788		
DISTANCE FROM MH40008877		
DISTANCE	DIAMETER	CLOCK
6.4	150	2
7.7	150	10
22.5	150	10
22.9	150	3
25.3	150	9
28.1	150	3
37.6	150	9
53.7	150	9
59.9	150	3
68.4	150	9



MH ID MH40008864
RIM 234.920
INV N 231.140
INV E 231.130
INV W 231.130

MH ID MH40008877
RIM 234.700
INV N 231.450
INV S 231.450

1.3 OF 200 SDR35 PVC SEWER REPAIR (SD-022A). (TO BE DONE BY OTHERS)

2.5 OF 200 SDR35 PVC SEWER REPAIR (SD-022A). INCLUDING 1 SERVICE CONNECTION. (TO BE DONE BY OTHERS)

88.0 OF 200 CONC SEWER TO BE LINED (SEWER ID S-MA40009788)

WARNING

IF POWER EQUIPMENT OR EXPLOSIVES ARE TO BE USED FOR EXCAVATION ON THIS PROJECT THE CONTRACTOR MUST:
1) NOTIFY THE GAS COMPANY OF THE PROPOSED LOCATION OF EXCAVATION.
2) TAKE PRECAUTION TO AVOID DAMAGE TO GAS COMPANY INSTALLATIONS.
SEE PROVINCIAL REGULATION 140/92 FOR DETAILS

**ENGINEERS
GEOSCIENTISTS
MANITOBA**
Certificate of Authorization
Stantec Consulting Ltd.
No. 1301

METRIC
WHOLE NUMBERS INDICATE MILLIMETRES
DECIMALIZED NUMBERS INDICATE METRES
1:500 [Scale bar showing 0, 5, 15, 25m]
BID OPPORTUNITY NO. 1167-2018

LOCATION APPROVED UNDERGROUND STRUCTURES

SUPV. U/G STRUCTURES COMMITTEE DATE

NOTE:
LOCATION OF UNDERGROUND STRUCTURES AS SHOWN ARE BASED ON THE BEST INFORMATION AVAILABLE BUT NO GUARANTEE IS GIVEN THAT ALL EXISTING UTILITIES ARE SHOWN OR THAT THE GIVEN LOCATIONS ARE EXACT. CONFIRMATION OF EXISTENCE AND EXACT LOCATION OF ALL SERVICES MUST BE OBTAINED FROM THE INDIVIDUAL UTILITIES BEFORE PROCEEDING WITH CONSTRUCTION.

NO.	ISSUED FOR TENDER	DATE	BY
1	ISSUED FOR TENDER	19.01.02	RS
NO.	REVISIONS	DATE	BY

Stantec
905 Waverley Street, Winnipeg, Manitoba
Tel 204-489-5900 Fax 204-453-9012

DESIGNED BY	RS	CHECKED BY	RS
DRAWN BY	SC	APPROVED BY	RS
HOR. SCALE:	1:500	RELEASED FOR CONSTRUCTION:	
VERTICAL:		DATE	18.10.29

ENGINEER'S SEAL
PROVINCE OF MANITOBA
REGISTERED PROFESSIONAL ENGINEER
R.M. SHERLOCK
MEMBER 24045
CONSULTANT DRAWING NO. C-107

THE CITY OF WINNIPEG
WATER AND WASTE DEPARTMENT

2018 SEWER RENEWALS BY CIPP LINING
CONTRACT 7
CROSSGATE ROAD
1ST MH N OF WHITEWALL BLVD TO
MH AT WHITEWALL BLVD

SHEET OF
08 48
CAD FILE DRAWING NUMBER
18120c-101-922.dwg
CITY DRAWING NUMBER
11843