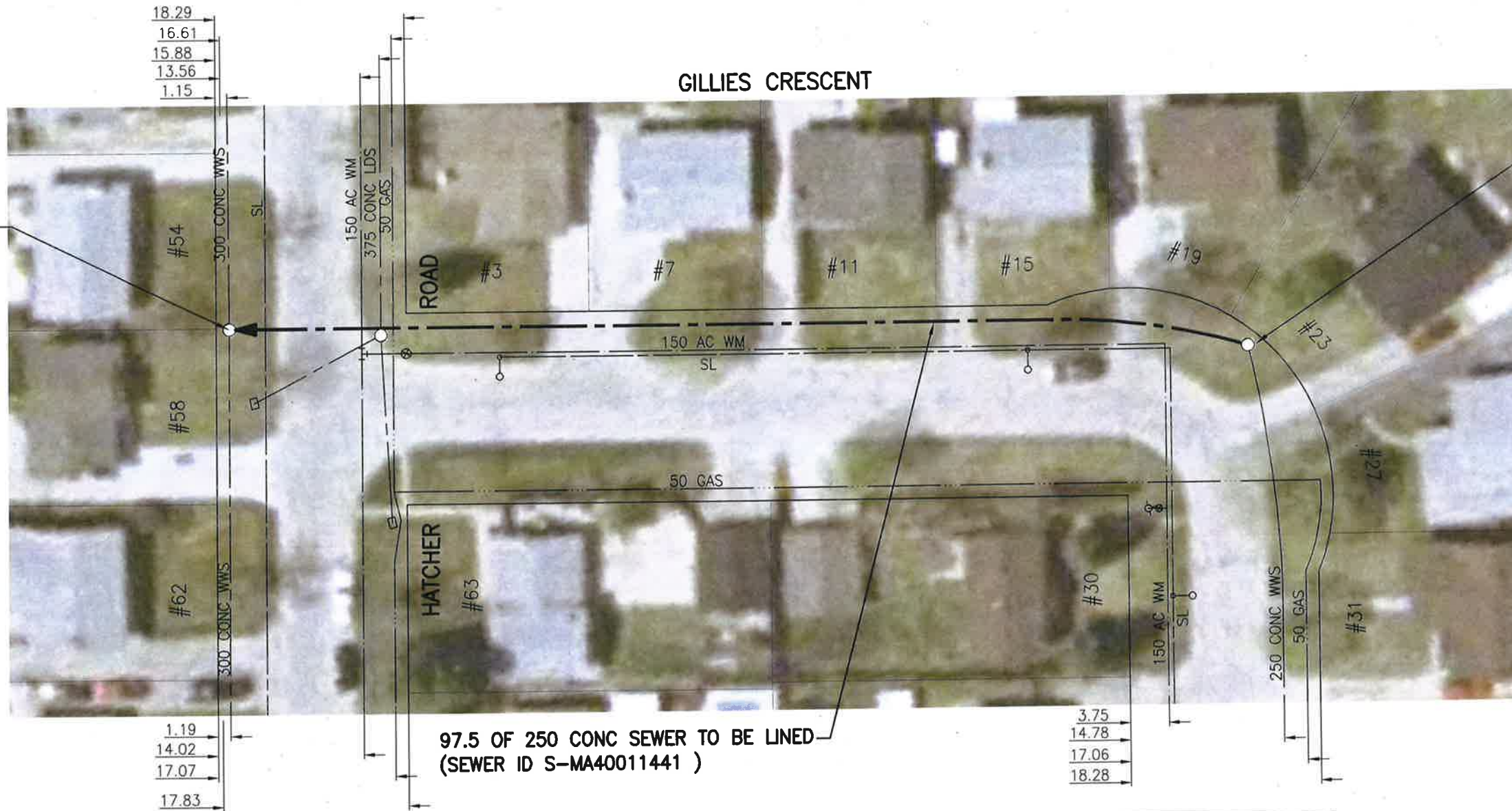


**SEWER JUNCTION INFORMATION FROM SEWER VIDEO INSPECTION**

SEWER ID S-MA40011441		
DISTANCE FROM MH40010369		
DISTANCE	DIAMETER	CLOCK
6.7	150	2
8.7	150	2
22.1	150	2
38.2	150	2
55.9	150	2
72.8	150	1
97.0	250	6

MH ID MH40010370  
RIM 232.140  
INV N 227.820  
INV E 227.820  
INV W 227.820



MH ID MH40010369  
RIM 231.340  
INV N 224.740  
INV E 224.740

**WARNING**

IF POWER EQUIPMENT OR EXPLOSIVES ARE TO BE USED FOR EXCAVATION ON THIS PROJECT THE CONTRACTOR MUST:  
1) NOTIFY THE GAS COMPANY OF THE PROPOSED LOCATION OF EXCAVATION.  
2) TAKE PRECAUTION TO AVOID DAMAGE TO GAS COMPANY INSTALLATIONS.  
SEE PROVINCIAL REGULATION 140/92 FOR DETAILS

**ENGINEERS  
GEOSCIENTISTS  
MANITOBA**  
Certificate of Authorization  
Stantec Consulting Ltd.  
No. 1301

**METRIC**  
WHOLE NUMBERS INDICATE MILLIMETRES  
DECIMALIZED NUMBERS INDICATE METRES  
1:500  
0 5 15 25m  
BID OPPORTUNITY NO. 1167-2018

**LOCATION APPROVED UNDERGROUND STRUCTURES**

SUPV. U/G STRUCTURES COMMITTEE	DATE

NOTE:  
LOCATION OF UNDERGROUND STRUCTURES AS SHOWN ARE BASED ON THE BEST INFORMATION AVAILABLE BUT NO GUARANTEE IS GIVEN THAT ALL EXISTING UTILITIES ARE SHOWN OR THAT THE GIVEN LOCATIONS ARE EXACT. CONFIRMATION OF EXISTENCE AND EXACT LOCATION OF ALL SERVICES MUST BE OBTAINED FROM THE INDIVIDUAL UTILITIES BEFORE PROCEEDING WITH CONSTRUCTION.

NO.	REVISIONS	DATE	BY
1	ISSUED FOR TENDER	19.01.02	RS

B.M.	ELEV.

**Stantec**  
905 Waverley Street, Winnipeg, Manitoba  
Tel 204-489-5900 Fax 204-453-9012

DESIGNED BY	RS	CHECKED BY	RS
DRAWN BY	SC	APPROVED BY	RS
HOR. SCALE:	1:500	RELEASED FOR CONSTRUCTION:	
VERTICAL:		DATE	18.10.29

DATE 01/02/19

ENGINEER'S SEAL  
PROVINCE OF MANITOBA  
REGISTERED PROFESSIONAL ENGINEER  
JAN 2/19  
R.M. SHERLOCK  
MEMBER 24045  
CONSULTANT DRAWING NO. C-III

**THE CITY OF WINNIPEG**  
WATER AND WASTE DEPARTMENT  
Winnipeg

2018 SEWER RENEWALS BY CIPP LINING  
CONTRACT-7  
**GILLIES CRESCENT**  
MH AT GILLIES N LEG TO  
MH AT HATCHER RD

SHEET	OF
12	48
CAD FILE DRAWING NUMBER 18120c-III-922.dwg	
CITY DRAWING NUMBER 11847	

V:\1112\active\111218120\0300\_drawing\0302\_sheet\_files\02\_civil\18120c-111-922.dwg