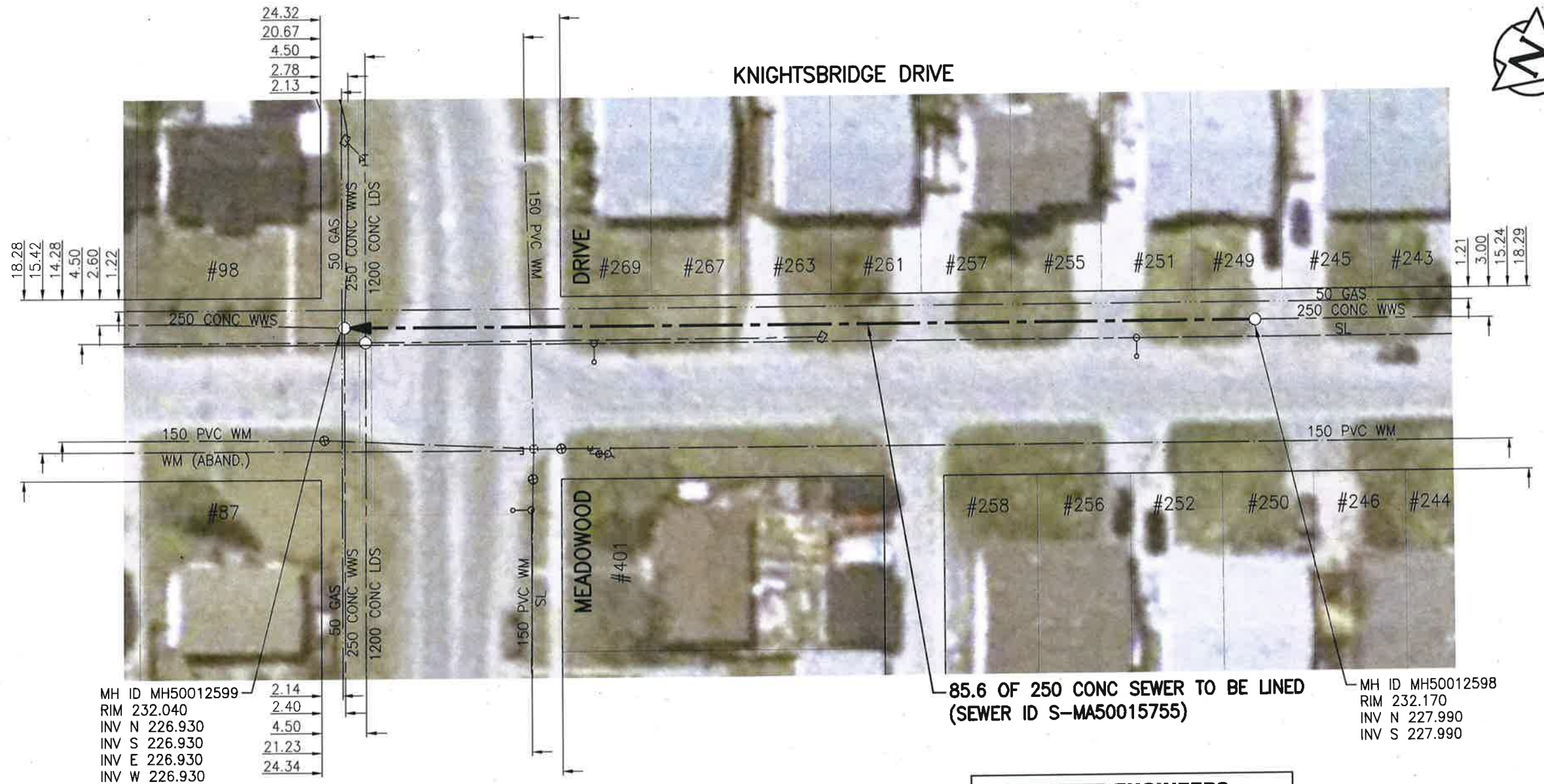


SEWER JUNCTION INFORMATION FROM SEWER VIDEO INSPECTION		
SEWER ID S-MA50015755		
DISTANCE FROM MH50012598		
DISTANCE	DIAMETER	CLOCK
15.9	150	10
17.6	150	2
35.9	150	2
54.3	150	2



WARNING

IF POWER EQUIPMENT OR EXPLOSIVES ARE TO BE USED FOR EXCAVATION ON THIS PROJECT THE CONTRACTOR MUST:

- 1) NOTIFY THE GAS COMPANY OF THE PROPOSED LOCATION OF EXCAVATION.
- 2) TAKE PRECAUTION TO AVOID DAMAGE TO GAS COMPANY INSTALLATIONS.

SEE PROVINCIAL REGULATION 140/92 FOR DETAILS

85.6 OF 250 CONC SEWER TO BE LINED (SEWER ID S-MA50015755)

MH ID MH50012599
RIM 232.040
INV N 226.930
INV S 226.930
INV E 226.930
INV W 226.930

MH ID MH50012598
RIM 232.170
INV N 227.990
INV S 227.990

**ENGINEERS
GEOSCIENTISTS
MANITOBA**

Certificate of Authorization
Stantec Consulting Ltd.
No. 1301

METRIC
WHOLE NUMBERS INDICATE MILLIMETRES
DECIMALIZED NUMBERS INDICATE METRES

1:500

BID OPPORTUNITY NO. 1167-2018

LOCATION APPROVED UNDERGROUND STRUCTURES

SUPV. U/G STRUCTURES COMMITTEE DATE

NOTE:
LOCATION OF UNDERGROUND STRUCTURES AS SHOWN ARE BASED ON THE BEST INFORMATION AVAILABLE BUT NO GUARANTEE IS GIVEN THAT ALL EXISTING UTILITIES ARE SHOWN OR THAT THE GIVEN LOCATIONS ARE EXACT. CONFIRMATION OF EXISTENCE AND EXACT LOCATION OF ALL SERVICES MUST BE OBTAINED FROM THE INDIVIDUAL UTILITIES BEFORE PROCEEDING WITH CONSTRUCTION.

NO.	REVISIONS	DATE	BY
1	ISSUED FOR TENDER	19.01.02	RS

Stantec
905 Waverley Street, Winnipeg, Manitoba
Tel 204-489-5900 Fax 204-453-9012

DESIGNED BY	RS	CHECKED BY	RS
DRAWN BY	SC	APPROVED BY	RS
HOR. SCALE:	1:500	RELEASED FOR CONSTRUCTION:	
VERTICAL:		DATE	01/02/19
DATE	18.10.29	CONSULTANT DRAWING NO.	C-118

ENGINEER'S SEAL

CONSULTANT DRAWING NO. C-118

THE CITY OF WINNIPEG
WATER AND WASTE DEPARTMENT

2018 SEWER RENEWALS BY CIPP LINING
CONTRACT 7
KNIGHTSBRIDGE DRIVE
MH AT MEADOWOOD DR TO
1ST MH N OF MEADOWOOD DR

SHEET OF	19 OF 48
CAD FILE DRAWING NUMBER	18120c-III-922.dwg
CITY DRAWING NUMBER	11854