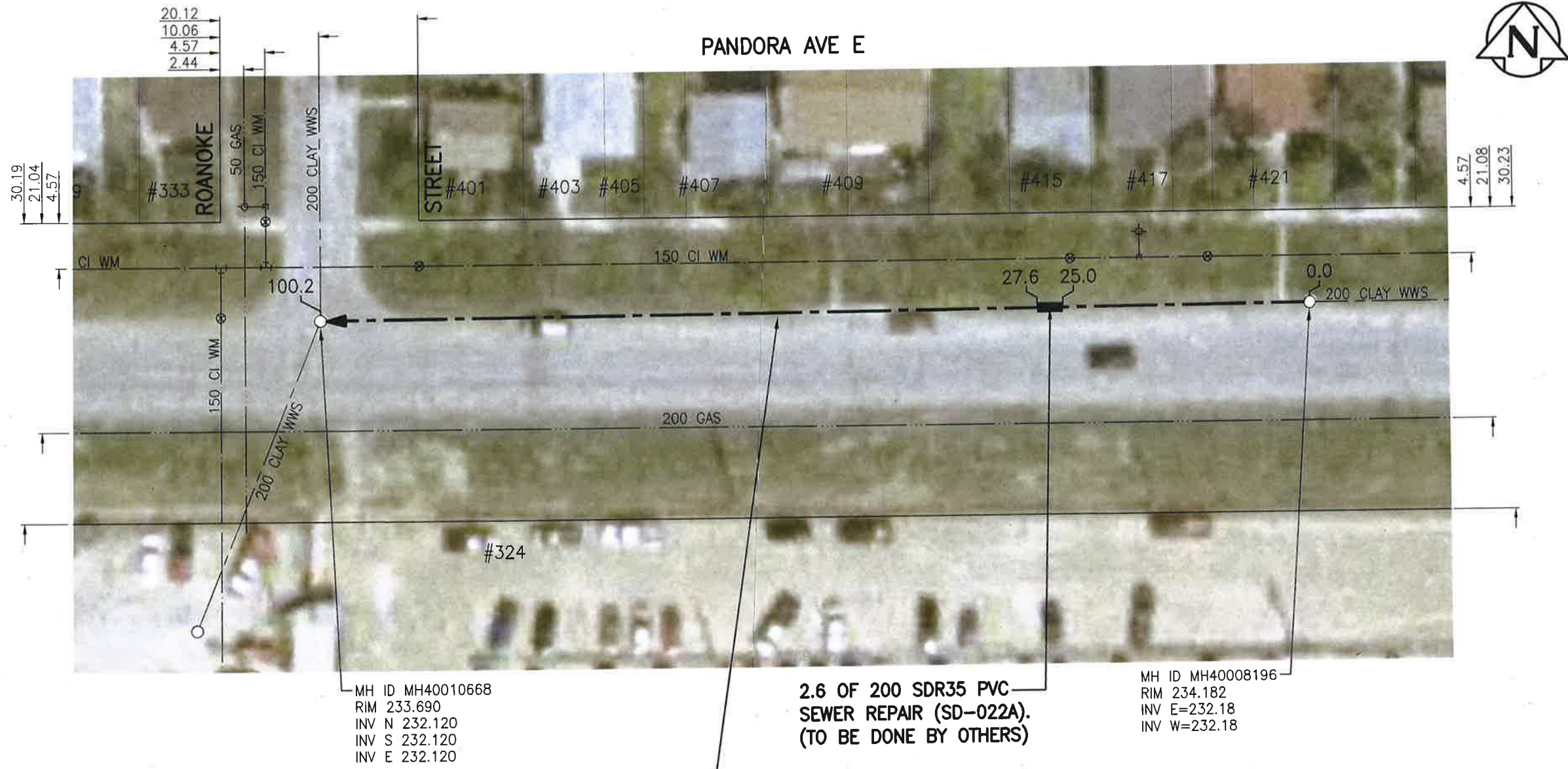


SEWER JUNCTION INFORMATION FROM SEWER VIDEO INSPECTION

SEWER ID S-MA40009139		
DISTANCE FROM MH40008192		
DISTANCE	DIAMETER	CLOCK
17.6	150	3
27.1	150	3
30.8	150	3
38.9	150	3
46.0	150	3
46.6	150	3
54.2	150	3
54.9	150	3
61.4	150	3
69.5	150	3
72.0	150	3
77.6	150	3
84.7	150	3
90.4	150	3



WARNING

IF POWER EQUIPMENT OR EXPLOSIVES ARE TO BE USED FOR EXCAVATION ON THIS PROJECT THE CONTRACTOR MUST:
 1) NOTIFY THE GAS COMPANY OF THE PROPOSED LOCATION OF EXCAVATION.
 2) TAKE PRECAUTION TO AVOID DAMAGE TO GAS COMPANY INSTALLATIONS.
 SEE PROVINCIAL REGULATION 140/92 FOR DETAILS

100.2 OF 200 CLAY SEWER TO BE LINED
 (SEWER ID S-MA40009139)

2.6 OF 200 SDR35 PVC
 SEWER REPAIR (SD-022A).
 (TO BE DONE BY OTHERS)

MH ID MH40008196
 RIM 234.182
 INV E=232.18
 INV W=232.18

**ENGINEERS
 GEOSCIENTISTS
 MANITOBA**
 Certificate of Authorization
 Stantec Consulting Ltd.
 No. 1301

METRIC
 WHOLE NUMBERS INDICATE MILLIMETRES
 DECIMALIZED NUMBERS INDICATE METRES
 1:500 25m
 BID OPPORTUNITY NO. 1167-2018

LOCATION APPROVED UNDERGROUND STRUCTURES

SUPV. U/G STRUCTURES COMMITTEE	DATE

NOTE:
 LOCATION OF UNDERGROUND STRUCTURES AS SHOWN ARE BASED ON THE BEST INFORMATION AVAILABLE BUT NO GUARANTEE IS GIVEN THAT ALL EXISTING UTILITIES ARE SHOWN OR THAT THE GIVEN LOCATIONS ARE EXACT. CONFIRMATION OF EXISTENCE AND EXACT LOCATION OF ALL SERVICES MUST BE OBTAINED FROM THE INDIVIDUAL UTILITIES BEFORE PROCEEDING WITH CONSTRUCTION.

NO.	ISSUED FOR TENDER	DATE	BY
1	ISSUED FOR TENDER	19.01.02	RS

Stantec
 905 Waverley Street, Winnipeg, Manitoba
 Tel 204-489-5900 Fax 204-453-9012

DESIGNED BY	RS	CHECKED BY	RS
DRAWN BY	SC	APPROVED BY	RS
HOR. SCALE:	1:500	RELEASED FOR CONSTRUCTION:	
VERTICAL:		DATE	10/02/19

ENGINEER'S SEAL

 CONSULTANT DRAWING NO.
C-128

THE CITY OF WINNIPEG
 WATER AND WASTE DEPARTMENT

2018 SEWER RENEWALS BY CIPP LINING
 CONTRACT 7
PANDORA AVENUE E
 1ST MH E OF ROANOKE ST TO
 MH AT ROANOKE ST

SHEET	29	OF	48
CAD FILE DRAWING NUMBER 18120c-121-922.dwg			
CITY DRAWING NUMBER 11864			

V:\112\active\11218120\0300_drawing\0302_sheet_files\02_civil\18120c-121-922.dwg